

DUNDEE CITY COUNCIL

Children and Families Service



Proposal Paper

Closure of St Pius X Roman Catholic (RC) Primary School and Nursery at the end of academic session 2025/26 (2 July 2026). Expansion of St Francis Roman Catholic (RC) Primary School catchment area to include the existing St Pius X Roman Catholic (RC) Primary School catchment area.

This document has been issued by Dundee City Council for consultation in terms of the Schools (Consultation) (Scotland) Act 2010 as amended.

The Ordnance Survey map data included within this document is provided by Dundee City Council under licence from Ordnance Survey in order to fulfil its public function in relation to this public consultation. Persons viewing this mapping should contact Ordnance Survey Copyright for advice where they wish to licence Ordnance Survey mapping/data.

1 PROPOSAL

- 1.1 Closure of St Pius X Roman Catholic Primary School and Nursery at the end of academic session 2025/26 (2 July 2026). Expansion of St Francis Roman Catholic (RC) Primary School catchment area to include the existing St Pius X Roman Catholic (RC) Primary School catchment area.

2 BACKGROUND

- 2.1 Education Authorities have a statutory duty in terms of the Education (Scotland) Act 1980 to make adequate and efficient provision of school education which includes early learning and childcare across their area.
- 2.2 Councils have a statutory duty to secure best value in terms of the Local Government in Scotland Act 2003. Most importantly, the Education Authority would wish to optimise the educational experiences for every child through provision that offers:
 - High quality
 - Flexibility
 - Accessibility
- 2.3 To achieve best value and optimum efficiency, the organisation of the learning estate is kept under regular review.
- 2.4 At the meeting of the Children, Families and Communities Committee on 2nd December 2024 (report no. **296-2024** refers), elected members gave approval for the Executive Director of the Children and Families Service to formally consult on the closure of St Pius X RC Primary School and Nursery.
- 2.5 In academic session 2021/22, primary pupil roles reached their peak, and the citywide primary pupil population began a decline. National Records of Scotland (NRS) population projections suggest that this will continue.

Table 1: NRS, 2018-based, principal population projections for Dundee children aged 5 to 11

Year	2024	2025	2026	2027	2028	2029
5-11 yr olds	10,216	9,952	9,860	9,698	9,604	9,492

- 2.6 The St Pius X RC Primary School roll is in decline. In September 2019 the roll was 195. The current school roll (Provisional September 2024 census count) is 162. The school capacity is 242. This equates to a current occupancy level of 64%.
- 2.7 St Francis RC Primary School opened in 2017 with a pupil roll of 407. The current school roll (Provisional September 2024 census count) is 300. This fall in roll over the last five to seven years may indicate that there is insufficient demand for the number of denominational primary school places currently available within the North East and East End Wards. Across the North East and East End wards the average occupancy levels for all primary schools is 73%.
- 2.8 A small school roll can limit the ability to offer a full range of curricular and learning opportunities to all the children. It can also result in children at key stages having a limited age-related peer group; the size of the school roll limits the children's access to a wider range of peers' views and ideas for collaborative working and skills development which allows children to support each other's learning and learn how to challenge thinking.
- 2.9 A small school roll restricts opportunities for team sports and other active recreational activities. This also applies to individual sports, where the successful learning of skills can also be supported by talking about and sharing experiences. This further applies to the health and wellbeing element of the curriculum which involves discussion and debate between school children about healthy lifestyle choices.
- 2.10 Except for the Council's Edwardian and Victorian primary schools, St Pius X RC Primary School is now one of the oldest schools, built post-1970, and the financial implications of maintaining appropriate levels of condition and suitability become greater year on year. The current building condition has dropped to a C grading and suitability scoring is B. This resulted in recent and significant investment to undertake work on the school roof which cost circa £142k. It is anticipated that the age profile and condition of the St Pius X building will result in ongoing similar financial commitments.
- 2.11 The condition and suitability rating definitions are included in [Table 2](#) below.

Table 2: Condition and Suitability rating definitions

		Condition	Suitability
Rating A	Good	Performing well and operating efficiently	Performing well and operating efficiently
Rating B	Satisfactory	Performing adequately but showing minor deterioration	Performing well but with minor problems
Rating C	Poor	Showing major defects and/or not operating adequately	Showing major problems and/or not operating optimally
Rating D	Bad	Life expired and/or serious risk of imminent failure	Does not support the delivery of services to children and communities

- 2.12 [Table 3](#) shows the current condition and suitability ratings of primary schools within the East End and North East Wards of the city as of May 2024.

Table 3: Condition and suitability ratings of primary schools in East End and North East Wards

School Name	Overall Condition	Suitability of Estate
Ballumbie Primary School	A	A
Claypotts Castle Primary School	A	A
Craigiebarns Primary School	C	B
Fintry Primary School	A	A
Longhaugh Primary School	A	A
Mill of Mains Primary School	B	B
Rowantree Primary School	A	A
St Francis RC Primary School	A	A
St Pius X RC Primary School	C	B

- 2.13 The Council is consulting parents, school children, staff, Roman Catholic Church representatives, Trade Unions and the community on the proposal to close St Pius X RC primary school as well as the expansion of St Francis Roman Catholic Primary School catchment area to accommodate the existing St Pius X Roman Catholic Primary School catchment area.
- 2.14 If St Pius X Primary closes, St Francis Primary would become the new denominational catchment school for all children living in the current St Pius X catchment area. All children already have an allocated non-denominational catchment school based on their home address. These include: Ballumbie, Claypotts Castle, Craigiebarns, Fintry, Longhaugh, Mill of Mains and Rowantree Primary Schools.
- 2.15 Across Dundee City Council there are ten Roman Catholic Primary Schools. In comparison, Perth and Kinross Council have four and Angus Council have two.
- 2.16 The intended outcome of this proposal would provide more balanced and increased occupancy levels across our schools within the east of the city and deliver a higher level of school condition and suitability, reducing the financial burden of building maintenance allowing redirection of educational resources to support delivery of educational experiences within classrooms.
- 2.17 A meeting has been held between Council officers and Church representatives regarding the proposal to close St Pius X RC Primary School and the potential educational benefits have been discussed. Council officers and the Church representatives will continue to work together during the consultation process.

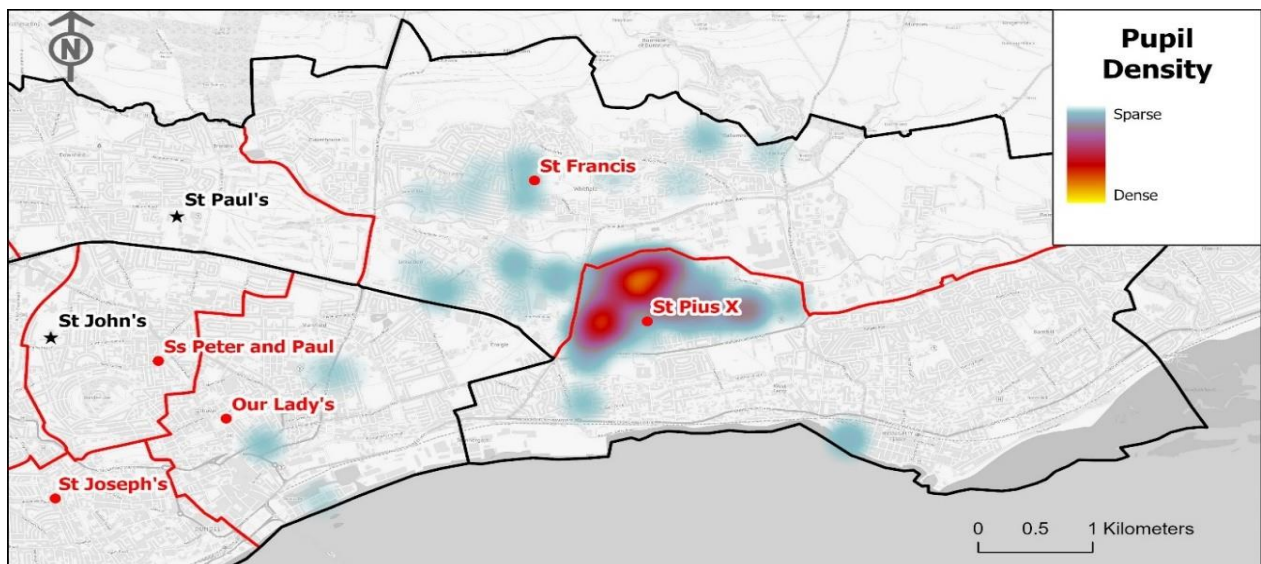
3 ST PIUS X ROMAN CATHOLIC PRIMARY- SCHOOL ROLL

- 3.1 Table 4 (extract from Review of the Service Estate committee report 26-2024) shows the capacity and school rolls for East End and North East Ward schools in session 2023/24, along with the number and proportion of children living in and outside of the catchment for the school they attend. 80% of children at St Pius X RC Primary School in session 2023/24 lived within the school's catchment (See Map 1). 75% of children at St Pius X RC Primary School in session 2023/24 lived within the non-denominational catchment for Claypotts Castle Primary School.

Table 4: Capacities and rolls for primary schools in East End and Northeast Wards

School Name	Planning Capacity	Roll	Occupancy	Living in catchment	Outside catchment	% catchment	in% outside catchment
Ballumbie	676	398	59%	288	110	72%	28%
Claypotts Castle	500	348	70%	293	55	84%	16%
Craigiebarns	367	301	82%	135	166	45%	55%
Fintry	317	277	87%	189	88	68%	32%
Longhaugh	371	260	70%	128	132	49%	51%
Mill of Mains	317	277	87%	189	88	68%	32%
Rowantree	434	299	69%	230	69	77%	23%
St Francis RC	392	311	79%	246	65	79%	21%
St Pius' RC	242	162	64%	125	31	80%	20%

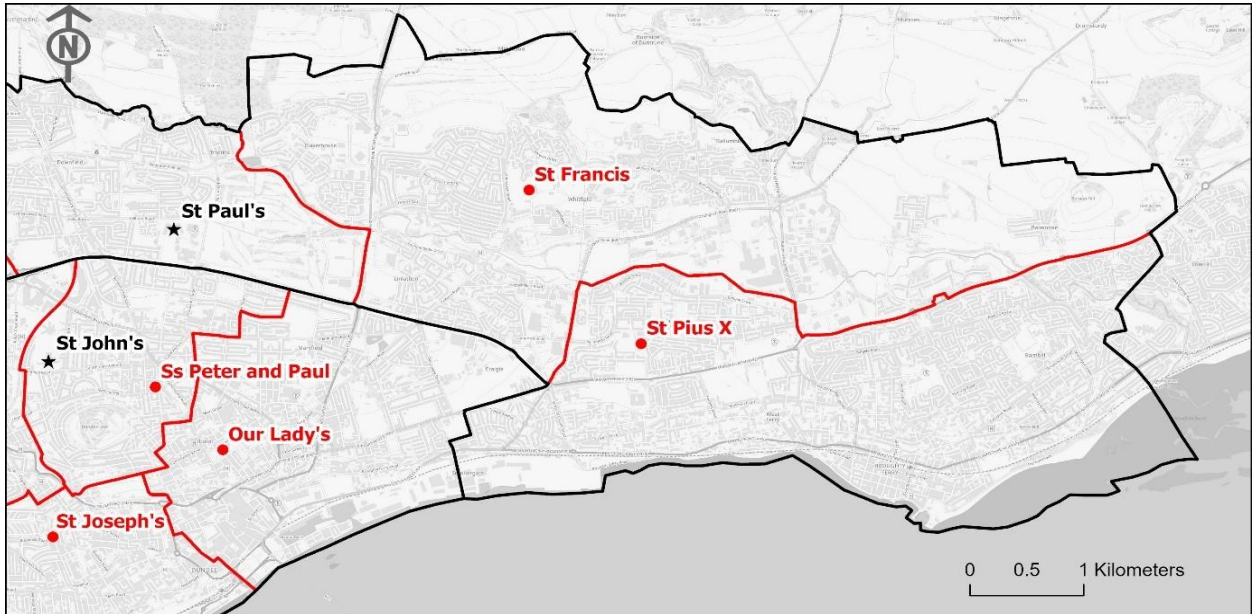
Map 1: Geographical distribution of children attending St Pius X RC Primary School.



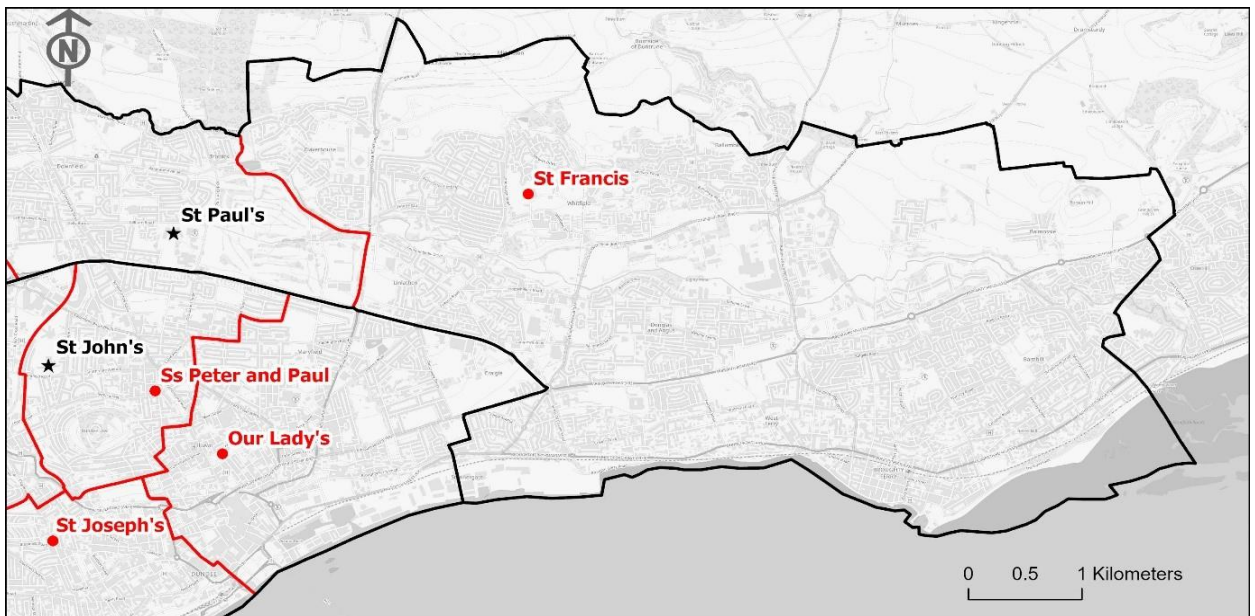
4 ALTERNATIVE PRIMARY SCHOOL OPTIONS

- 4.1 The closest denominational primary school to St Pius X RC Primary School is St Francis RC Primary School which is located within North East Campus. St Francis RC Primary School shares the North East Campus building with: Longhaugh Primary School, Quarry View Nursery and Longhaugh Support Group.
- 4.2 Map 2 shows the existing denominational catchment areas for St Pius X RC Primary School and St Francis RC Primary School and Map 3 shows the proposed denominational catchment area.

Map 2: Existing denominational schools and catchments.

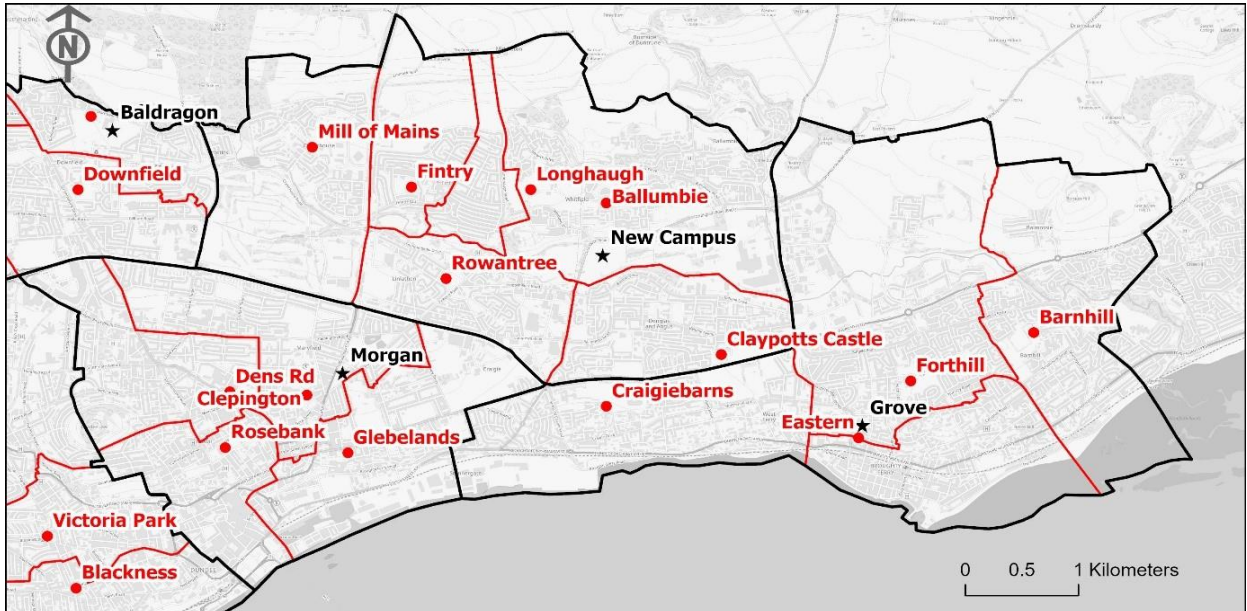


Map 3: Proposed denominational schools and catchments.

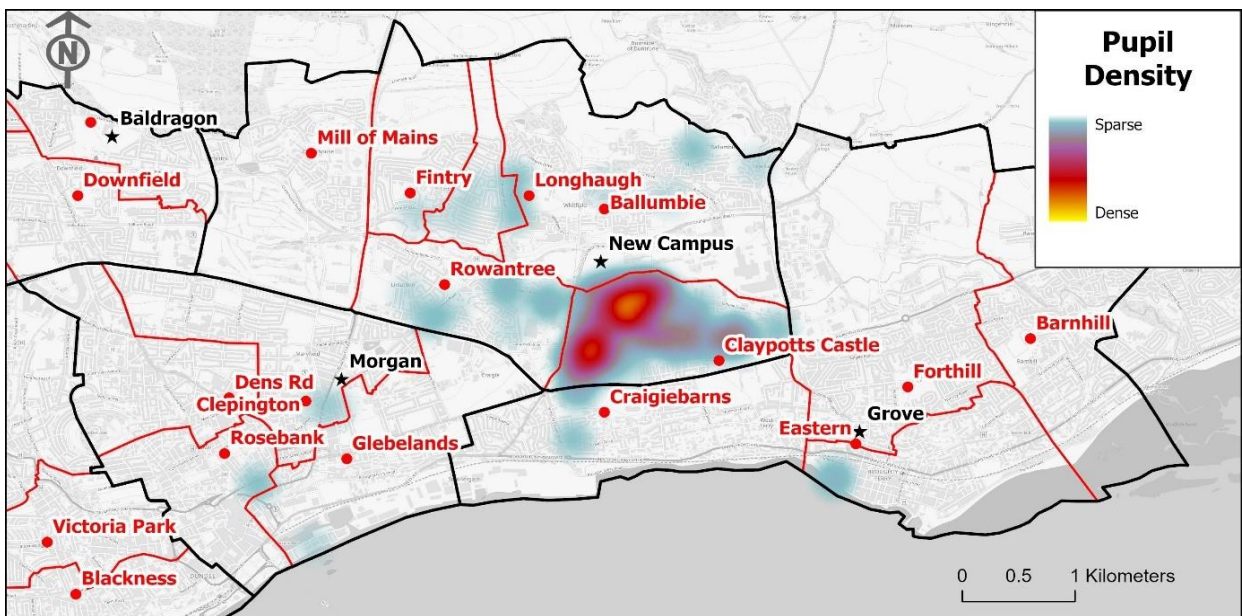


4.3 Within the East End and North East Wards of the city there are seven non-denominational primary schools: Ballumbie, Claypotts Castle, Craigiebarns, Fintry, Longhaugh, Mill of Mains and Rowantree Primary Schools (Map 4 and Map 5).

Map 4: Non-denominational schools and catchments effective for August 2025.



Map 5: Non-denominational schools and catchments with density map of current St Pius X RC Primary School pupils.



4.4 Table 5 shows the Projected primary rolls for primary schools within the East End and North East Wards.

Table 5: Projected school rolls for primary schools in East End and North East Wards

School	Capacity	'24/25	'25/26	'26/27	'27/28	'28/29	'29/30
Ballumbie	676	388	384	372	365	350	355
Claypotts Castle	500	358	363	350	339	338	334
Craigiebarns	367	284	288	275	284	275	273
Fintry	434	359	340	335	323	317	306
Longhaugh	371	267	258	255	256	257	240
Mill Of Mains	317	281	264	250	241	224	218
Rowantree	434	282	277	263	258	252	245
St Francis RC	392	300	302	295	277	271	270
St Pius X RC	242	162	158	154	150	150	142

4.5 All primary schools within East End and North East Wards currently have capacity to accommodate additional children.

5 ST FRANCIS ROMAN CATHOLIC PRIMARY- SCHOOL ROLL

5.1 The proposed consultation would consider the closing of St Pius X RC Primary School and transition of children from this school to St Francis RC Primary School, or an alternative non-denominational primary should families wish.

5.2 St Francis RC Primary School's provisional 2024 census roll is 300; reported capacity for this school currently sits at 392. St Francis RC Primary School sits within the North East ward of the city in North East Campus (NEC), sharing accommodation with Longhaugh Primary School. Longhaugh Primary School's provisional 2024 census roll is 267, with a reported capacity of 371. However, the overall capacity of the NEC building is 907 with a total allocation of 29 classrooms available. This is larger than the reported combined capacity of St Francis RC and Longhaugh Primary Schools as the school has non-assigned additional classrooms designed to allow the building to respond to growth or changes within primary pupil populations. This capacity excludes accommodation used by Quarry View Nursery and Longhaugh Support Group.

5.3 Should all children from St Pius X RC Primary School choose to transfer to St Francis RC Primary School the combined roll, based on provisional 2024 census figures, would be 462.

6 PROJECTED PRIMARY SCHOOL ROLLS IN THE EAST OF DUNDEE

- 6.1 School projections (2024 based) indicating the projected rolls for primary schools within the North East and East End Wards of Dundee under this proposal are outlined in the table below (Table 6). The method of roll projection used takes account of where children live and which primary school they are likely to attend from that location, based on existing school populations. It is uncertain how many existing children from St Pius X RC Primary School will elect to move to St Francis RC Primary School and how many would choose to transfer to a non-denominational primary school. is based on the current projected roll of St Pius X RC Primary School being distributed equally between St Francis RC Primary School and Claypotts Castle Primary School. It is important to note that if a school approached capacity, school children can be redirected to their catchment school if applying via a placing request.

Table 6: Projected school rolls for primary schools in the East End and Northeast Wards, based on the closure of St Pius X RC Primary School in June 2026. Based on half attending St Francis RC Primary School and half attending Claypotts Castle Primary School

School	Capacity	'26/27	'27/28	'28/29	'29/30
Ballumbie	676	372	365	350	355
Claypotts Castle	500	427	414	413	405
Craigiebarns	367	275	284	275	273
Fintry	434	335	323	317	306
Longhaugh	371	255	256	257	240
Mill Of Mains	317	250	241	224	218
Rowantree	434	263	258	252	245
St Francis RC	392	372	352	346	341

- 6.2 Table 7 shows the roll for St Francis RC Primary School if all children attending St Pius X RC Primary School transferred to St Francis RC Primary School and future P1 intakes projected for St Pius X RC Primary School continued to select a Roman Catholic provision at St Francis RC Primary School. Although this scenario is considered unlikely, there is physical capacity within the Northeast Campus building to accommodate these projected rolls. Currently reported capacities of 371 and 392 for Longhaugh and St Francis RC Primary Schools respectively do not make full use of the building's 29 classrooms.

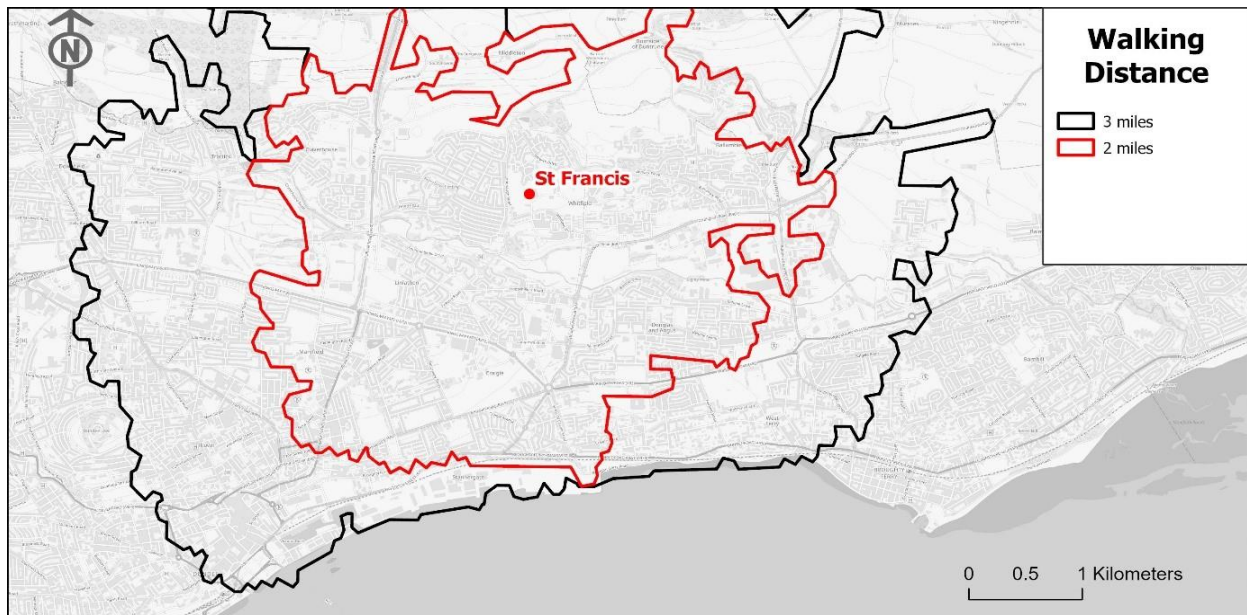
Table 7: Projected school roll for St Francis RC Primary School if all children attending St Pius X RC Primary School transferred to St Francis AND future P1 intakes projected for St Pius X all selected St Francis

	'26/27	'27/28	'28/29	'29/30
St Francis RC	449	427	421	412

7 TRAVEL TO SCHOOL

- 7.1 In considering the closure of St Pius X RC Primary School the impact this will have on the travel distances from home to school for children will be a key factor. Map 6 shows the areas identified as within 2 miles and 3 miles walking distance of St Francis RC Primary School. 90% of primary children at St Pius X RC Primary School currently live within 2 miles walking distance of St Francis RC Primary School. All St Pius X RC Primary School children who live within Dundee City Council live within 2 miles of a non-denominational primary school.

Map 6: Areas within 2- and 3-miles walking distance from St Francis RC Primary School



8 TRAVEL TO SCHOOL CONCLUSIONS

- 8.1 Overall, children currently attending St Pius X RC Primary School have several alternative primary school options, including St Francis RC Primary School for those who choose to attend a denominational primary school.
- 8.2 Most children will live inside two miles safe walking distance of an alternative primary school however some children live out with this distance for denominational primary school provision. Work will be required to consider the most appropriate travel options to support individual children access their educational provision in these circumstances. Careful consideration will be taken to promote and inform children, and their families of the walking/cycling routes and travel plans to encourage environmentally friendly attitudes and approaches to the school journey.

9 EDUCATIONAL BENEFITS OF A CATCHMENT CHANGE

- 9.1 As a result of the potential proposals, the school roll will be maintained at a level which over time will mitigate any detrimental impact upon teaching and learning experiences of the children in the school.
- 9.2 In each of the options proposed for consideration, the changes to existing catchment areas would ensure a more equitable distribution of children across the schools that would ensure viable, sustainable pupil rolls for all, whilst retaining sufficient flexibility to support a variety of learning and teaching approaches aligned to the Curriculum for Excellence.

10 EDUCATIONAL BENEFITS OF A CLOSURE

- 10.1 Dundee City Council aims to provide the best possible physical learning environment for our children, staff and families. If a decision to close St Pius X Primary School and nursery is taken, the alternative buildings available offer modern, vibrant learning environments which contribute to the effective delivery of pupil entitlements outlined within the Curriculum for Excellence and the aspirations to achieve excellence and equity outlined within our local and national school improvement frameworks.
- 10.2 Dundee's Council Plan (2022-2027) outlines a commitment to establishing strong and safe communities and extending community access to a range of cultural, learning, leisure, and sport services. It is envisaged that attendance to schools which have access to significantly larger playgrounds areas offering a mix of spaces, equipment and surface types will support the realisation of such aspirations.
- 10.3 The modern alternative school environments will likely have a positive impact on mental health and emotional wellbeing as well as motivation, behaviour, and aspirations of children, providing ideal conditions for children to learn and teachers to teach. Improved outcomes will be achieved including increased presence, participation, and progress.
- 10.4 Children may experience improved opportunities for inter-disciplinary learning due to the improved layout and configuration of the alternative school buildings.
- 10.5 Data would indicate a growing number of school children with significant and complex additional support needs within the east of Dundee. Where possible the Children and Families Service endeavours to provide where relevant, educational provision for children within a mainstream environment within their local community. Enhanced support for children who have a range of complex needs including Autism and those who are Deaf or have a Visual Impairment are offered within the alternative primary schools, increasing opportunities for children to access support more readily within their learning experiences.
- 10.6 St Pius X RC Primary School building presents accessibility, condition and suitability issues which presents challenges for building users including children with additional support needs. The alternative primary schools are modern, purpose-built facilities which do not present these same issues. Providing a suitable environment to assist all children within their learning is important to enable them access to appropriate educational experiences and promote accessible inclusive learning spaces which will meet the needs of all children and comply with the Council's Accessibility Strategy and the Equality Act (2010).
- 10.7 Carefully planned moves to the alternative schools will afford children the opportunity to widen their network of friends. The fostering of new pupil relationships will enhance children's personal and social development.

- 10.8 Attending a larger catchment school will provide more opportunities for team sports and other active recreational activities. This applies even to individual sports, where successful learning of skills is helped by talking and sharing experiences. It further applies to the health and wellbeing element of the curriculum which involves discussion and debate between school children regarding healthy lifestyle choices. Whilst these problems can currently be partially overcome by taking the children to participate in activities in a neighbouring school, that involves time out of school travelling there and back.
- 10.9 As with sports, a larger school roll would also provide a greater likelihood of children benefitting from a wider range of solo and group musical and artistic opportunities.

11 IMPACT OF THE PROPOSAL ON ST PIUS X ROMAN CATHOLIC PRIMARY SCHOOL

- 11.1 Identification of the suitable alternative primary schools will be an important part of this process; intensive work will be required to facilitate and manage carefully planned transitional experiences to help minimise any adverse effects for the children moving to new school environments.
- 11.2 In conjunction with this children's peer relationships and friendship grouping will need careful consideration.

12 IMPACT OF THE PROPOSAL ON ST PIUS X NURSERY CLASS

- 12.1 As no catchment areas exist for nurseries in the same way as primary schools, families will have the choice to apply to any nursery provision across the city and not just within their local area. This flexibility enables families to make choices based on other factors such as their family network or work location and situation.
- 12.2 Table 8 below shows Local Authority and Funded Provider provision currently within 2km walking distance of St Pius X Nursery.

Table 8: Nursery provision within 2km's walk from St Pius X RC Primary School

Provision	Eligible age group	Delivery model	Walking distance from St Pius X Nursery
Baluniefield Nursery	2-5	Mixed - Term Time/ Full Year	450 m
Butterflies, Kingsway East	2-5	Funded Provider, Term Time / Full Year	1.5 km
Claypotts Castle Nursery	2-5	Mixed - Term Time / Full Year	1.3 km
Craigiebarns Nursery	3-5	Term Time	1.7 km

13 IMPACT OF THE PROPOSALS UPON SCHOOL AND NURSERY STAFF

- 13.1 Positions will be available for all staff at alternative nursery and primary provision with staff moves in line with agreed policies and procedures.
- 13.2 The staff will be supported by the HR Support Processes in the Council to ensure a smooth transition to a new setting or school.

14 LIKELY EFFECTS ON OTHER USERS OF THE SCHOOL FACILITIES

- 14.1 Out with School and Nursery hours, the St Pius X accommodation is not used by community or for wider service delivery. There will be no detrimental impact as the building is not let by other organisations or groups.

15 LIKELY EFFECTS ON CHILDREN IN OTHER DUNDEE PRIMARY SCHOOLS AND NURSERIES

- 15.1 Whilst the proposal will have no perceived adverse impact on children attending other schools in the city, the closure of St Pius X RC Primary School will reduce inefficient operating expenditure thus allowing the necessary redirection of resources to support school and nursery children across Dundee.
- 15.2 The children at the other schools within the cluster will benefit from the increased diversity in their schools and from the opportunity to expand both their social and educational peer group. This will allow children to access a wider range of views and ideas for collaborative working and allow the children to support each other's learning and learn how to challenge thinking.
- 15.3 Families will continue to have the choice to apply to the Nursery / Funded Provider of their choice. Families are asked to identify their first, second and third choice of nursery at the point of application.
- 15.4 On the occasion when these nursery choices cannot be accommodated, the Central team work with families on an individual basis to secure a funded place within the city. The number of children attending nursery settings across the city is continually reviewed, thus allowing where appropriate, redirection of staffing resources across Local Authority provision.
- 15.5 No children will be disadvantaged as there are a range of alternatives schools and nurseries and there is sufficient, flexible capacity across the City.
- 15.6 All staff will remain employed within Local Authority schools and nurseries. The resultant transfer of staff into other Local Authority provisions within the city spreads their exemplary practice, skills and experience and augments existing positive experiences for children across the city.

16 HOW THE COUNCIL INTENDS TO MINIMISE OR AVOID POTENTIAL ADVERSE EFFECTS

TRANSFERRING PRIMARY SCHOOL CHILDREN

- 16.1 Should the proposal be accepted, children currently attending St Pius X RC Primary School will transition to attending another primary school for academic session 2026/27.
- 16.2 Senior managers and school staff from all establishments will work together to ensure a planned and smooth transition for all school children.
- 16.3 In support of any resulting staff redeployments, school leaders, supported by central officers, will deploy a range of strategies to support the smooth transition of staff to their new schools. Such measures will include, where required, pastoral support visits by link Education Officers to ensure staff wellbeing.
- 16.4 Teachers who are compulsorily transferred will be protected from further compulsory transfer for a period of two years.
- 16.5 During academic session 2025/26, work will be undertaken with children within St Pius X RC Primary school and their new primary school to provide familiarisation and transitional experiences to get to know their future peers and potential classmates.

LIKELY EFFECT ON THE LOCAL COMMUNITY

- 16.6 The St Pius X school and nursery buildings are currently available for lets however the accommodation is not used by community, other organisations or groups therefore there will be no detrimental impact.
- 16.7 If the school and nursery are closed, the flow of traffic at key points in the day will reduce in this area as families will no longer undertake drop off/pick up of their children, positively impacting upon the availability of parking and reduce the number of vehicles.

17 BENEFITS RESULTING FROM IMPLEMENTATION OF THIS PROPOSAL

- 17.1 The benefits highlighted in the preceding paragraphs can be summarised as follows:
- 17.2 No children will be disadvantaged as there are a range of alternatives and flexible and sufficient capacity across the City.
- 17.3 All staff will remain employed within Local Authority Schools and Nurseries. The resultant transfer of staff into other Local Authority provisions within the city spreads their exemplary practice, skills and experience and augments existing positive experiences for children across the city.
- 17.4 Dundee City Council will make financial savings at a time when the need for these is acute.
- 17.5 The realisation of financial savings will facilitate the redirection of resources to support children across Dundee.
- 17.6 In delivering these broad benefits, the authority is confident that it is discharging its duty to secure best value through continuous improvement in the performance of its functions, as required by the Local Government in Scotland Act 2003.

18 FINANCIAL IMPLICATIONS

- 18.1 If the proposal to close St Pius RC Primary School and Nursery is approved this will result in a reduction in expenditure amounting to approximately £911,800 from financial year 2027/28 onwards and a part year reduction of £571,000 in financial year 2026/27.
- 18.2 There will be additional one-off capital costs associated with disposing of the property amounting to approximately £300,000.
- 18.3 A financial template with full details is included as Appendix 1.

19 FORMAL CONSULTATION PROCESS AND THE PUBLICATION OF THE FORMAL PROPOSAL PAPERS

- 19.1 If approved, the consultation on a proposal to close St Pius X RC Primary School and Nursery, and rezone the catchment area of St Francis RC Primary School will begin on **6th January 2025** and formal proposal papers will be:

- published in both electronic and printed form,
- available for inspection at all reasonable times and without charge
- at 5 East City Square and on the Council website,
- at any affected school and nursery or at a public library or some other suitable place within the vicinity of the school and nursery.

- 19.2 The consultation process will end on **19th February 2025**

- 19.3 Formal consultation will include:

- preparation and publication of a proposal paper on the Council's website,
- giving notice of the proposal to parents/carers and other statutory consultees,
- giving notice of the proposals to the children at the affected schools (in so far as they are considered to be of a suitable age and maturity),
- giving notice of the proposals to the staff at the affected school,
- giving notice of the proposals to Trades Unions representing staff at the affected schools,
- an announcement of the proposal in the local press, inviting any person to make written representation to the Executive Director of Children and Families Services,
- public consultation in the local area,
- consultation with staff,
- consultation with parents of the children at the affected schools,
- consultation with the parents of any children expected by the education authority to attend the affected schools within two years of the date of publication of the proposal paper,
- consultation with representatives of the teacher and support staff trade unions,
- Consultation with the Scottish Hierarchy of the Roman Catholic Church in respect of this proposal,
- consultation with any other education authority that the education authority considers relevant,
- meetings with other interested bodies such as the Local Community Planning Partnership,
- meetings with Staff,
- meetings with school children.

- 19.4 At the end of the consultation period, the Executive Director of Children and Families Service will draft a report incorporating copies of written representations and a summary of oral representations from key stakeholders.
- 19.5 The report will then go to Education Scotland for His Majesty's Inspectors' who will prepare their report on the educational aspects of the proposal not later than 3 weeks after they receive the Local Authority report referenced above. In preparing their report, Education Scotland may visit the affected schools and nursery to make enquiries as they consider appropriate.
- 19.6 On receipt of the Education Scotland feedback report, the Executive Director of Children and Families Service, on behalf of the local authority, will prepare and publish a consultation report containing the views of Education Scotland and including an explanation of how the Council proposes to deal with any issues raised.
- 19.7 It is anticipated that the Children, Families and Communities Committee will decide to approve or reject the final proposal at its meeting in June 2025.
- 19.8 In the case of a school closure, Scottish Government Ministers have the power to call in decisions. Ministers have up to 8 weeks to decide whether or not to issue a call in notice. Where the Council approves a closure of a school after consultation this decision will be clearly reported on the council website and, where possible, to all those who have sent in responses to the consultation. Information will also be provided on how consultees can make further representations to Scottish Government Ministers.

20 PUBLIC MEETINGS

- 20.1 A public meeting will be held to discuss these proposals. Anyone wishing to attend the public meeting is invited to do so. The meeting, which will be convened by the Education Authority, will be addressed by the Executive Director of Children and Families Services or other senior officers of the Council.
- 20.2 The meeting will be an opportunity for interested parties to:
- Hear more about the proposal.
 - Ask questions about the proposal.
 - Have their views recorded so that they can be considered as part of the consultation process.
- 20.3 Formal Public Consultation Meeting is arranged as follows:

Date	Venue	Presentation and Question and answer session
27 th January 2025	St Pius X RC Primary School	6pm Viewing of Proposal 6:30pm Public Meeting
28 th January 2025	St Francis RC Primary School	6pm Viewing of Proposal 6:30pm Public Meeting

APPENDIX 1

Financial Template for Proposed Closure of St Pius X RC Primary school and Nursery

Table 1

Current revenue costs for St Pius X RC Primary School and Nursery proposed for closure			
	Costs for full financial year 2023/24	Additional financial impact on receiving schools	Annual recurring savings
School costs			
<i>Employee costs</i>	£1,190,800	£476,300	£714,500
teaching staff	£787,000	£272,200	£514,800
support staff	£399,000	£199,500	£199,500
Other staff costs	£4,800	£4,600	£200
<i>Building costs:</i>	£200,700		£200,700
non domestic rates	£42,900		£42,900
water & sewerage charges	£5,800		£5,800
energy costs	£29,900		£29,900
cleaning	£47,700		£47,700
building repair & maintenance / Health and safety contracts	£45,700		£45,700
facilities management costs	£28,700		£28,700
other – rent			
<i>School operational costs:</i>	£74,800	£68,200	£6,600
learning materials	£12,200	£6,600	£6,600
catering (contract or inhouse)	£55,600	£55,600	
other school operational costs (e.g. licences)	£7,000	£7,000	
<i>Transport costs:</i>	0		
home to school		£10,000	(£10,000)
staff travel			
SCHOOL COSTS SUB-TOTAL	£1,466,300	£554,500	£911,800
<i>Income:</i>			
Sale of meals	(£7,500)	(£7,500)	
Other	(£28,000)	(£28,000)	
SCHOOL INCOME SUB-TOTAL	(£35,500)	(£35,500)	
TOTAL COSTS MINUS INCOME FOR SCHOOL	£1,430,800	£519,000	£911,800

Table 2		
Capital costs	School proposed for closure	Receiving school
Demolition costs	£300,000	

Table 3

Annual Property costs incurred (moth-balling) until disposal	
property insurance	£8192
non domestic rates	£42,000
water & sewerage charges	£5,800
energy costs	£29,000
security costs	£40,000
TOTAL ANNUAL COST UNTIL DISPOSAL	£124,992

Table 4

Non-recurring revenue costs	
Removal and decommissioning costs (disposal of property)	£25,000
TOTAL NON-RECURRING REVENUE COSTS	£ 25,000