

## Broughty Ferry Flood Defence Scheme Newsletter

October 2020

### Introduction

Dawn Turnbull has recently been appointed as our full-time Community Liaison Officer (CLO), she has been out and about meeting residents and stakeholders within Broughty Ferry discussing the project and her plans for the next few months ahead. Dawn will be the point of contact for any questions as the works progress.

### How to contact us:

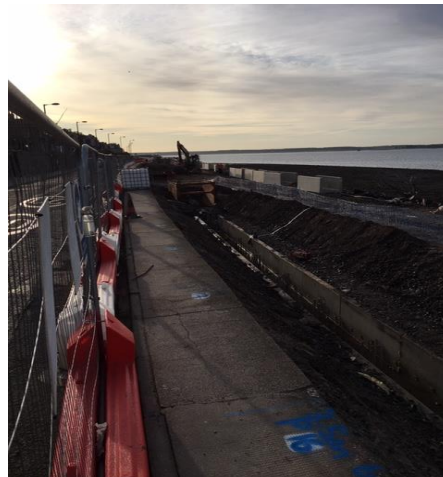
Email [bffps.community@mclh.co.uk](mailto:bffps.community@mclh.co.uk)

Dawn Turnbull- Community Liaison Officer

Tel: 07584 777 227 Email: [dawn.turnbull@mclh.co.uk](mailto:dawn.turnbull@mclh.co.uk)

### Progress

Progress of the flood protection works are going really well in challenging tidal conditions. The temporary platform installation and the piling works both finished ahead of programme and the current works of Pre Cast Concrete Install is on programme but is likely to finish ahead of programme. The next element of works to start in the coming weeks is the set back wall construction and drainage.



### Story Boards

We have recently erected 4 story boards along the length of the sea front. These boards provide information and artists impressions detailing the work planned along the sections in Douglas Terrace, James Place and Fisher Street. These boards have proved to be very popular and we've received positive feedback from the public. We hope to create further story boards detailing the plans for Beach Terrace which will help residents understand and visualise the project.



### Community Boards

In addition to the storey boards we have also erected 2 Community Notice Boards at either end of the site. These boards provide lots of additional information including details of our Communication and Complaint Policy as well information about MacLaughlin and Harvey and how to contact us.

More information on the scheme can be found online at <https://www.dundee.gov.uk/service-area/city-development/broughty-ferry-flood-protection-scheme>

### Community Benefits

McLaughlin and Harvey were delighted to supply the paint for pupils from Broughty Ferry's Grove Academy to create a mural on the our hoardings surrounding our site located on the Esplanade. The team from S4 are working towards a Princes Trust Award and we look forward to seeing their colourful and vibrant design take shape over the next few weeks.

We have also been visited by Dr Rebecca Wade from Abertay University, she has used the information gained from her tour of the site to create a Virtual Site Visit for Abertay University's Civil Engineering students who started their course in September. Current restrictions have forced everyone to be a bit more creative about how we engage with students, feedback from the session was good and hopefully we've inspired some potential engineers of the the future. We'll be working with schools, colleges and universities in the months ahead offering work experience and placements to students intersted in a career in construction.

### Considerate Constructors Scheme

The site has been registered with the Considerate Constructor's Scheme. This scheme monitors the site to assess how well we are performing as a Considerate Constructor in terms of community engagement, safety, appearance, work force and environmental compliance. If you want to learn more about CCS? Contact details for the Scheme are <http://www.ccscheme.org.uk>  
Tel: 0800 783 1423 Email: [enquiries@ccs.org.uk](mailto:enquiries@ccs.org.uk)

### Affected by our works?

If you are affected by our works in any way or perhaps you want to let us know we are doing a good job! There is an onsite letter box to post any suggestions or comments or drop us an email and we will get back to you as soon as possible.