

Where Next for Fairness in Dundee?

Please help yourself to tea and coffee.

We would like to get a mixture of different voices at each table so please sit at your assigned table if possible. Speak to the folks at the registration desk if you have questions.

Restrooms are in the entrance hall.



Dundee Fairness
Leadership Panel

The Dundee Fairness Leadership Panel



Dundee Fairness
Leadership Panel

Working together to create a fairer Dundee.

Who we are:

A collective response to poverty/inequality. A Panel made up of people with lived experience and organisational representatives working together to ensure the disadvantage and vulnerable in our city have a voice.

What we stand for:

A collective voice with powers to influence decisions and the services delivered in our city.

*Where Next for
Fairness in
Dundee?*



Dundee Fairness
Leadership Panel

Key tasks of the Panel



Dundee Fairness
Leadership Panel

Influence the development of crucial fairness strategies

Make sure key strategic decisions involve real input from people with lived experience

Ensure actions in the Dundee Fairness and Child Poverty Action Plan are achievable and delivered

Scrutinise performance and implementation of services

*Where Next for
Fairness in
Dundee?*



Dundee Fairness
Leadership Panel

36.7% of people in Dundee live within a data zone ranked within the 20% most deprived.

26.1% of children in Dundee are living in poverty, after housing costs.



Dundee Fairness
Leadership Panel

The Purpose of the Conference

Share the Panels achievements in past year

Gather your feedback

Use feedback and ideas to help decide what issues the
Panel will research.

Last year's Conference: Never Standin' Still

We presented our draft recommendations we thought would help improve challenges faced in:

- Mental Health and Isolation
- Pressures on 3rd Sector Projects Tackling Poverty
- Fair Housing



Dundee Fairness
Leadership Panel

Where has the report gone?

*Organisations we have presented the report to; we have received feedback from
or are in talks with:*

The Dundee Partnership
The Council's City Governance Committee
The Child Poverty & Inequality Strategic Leadership Group
The Health & Social Care Partnership Integrated Joint Board
The Cabinet Secretary for Social Justice
Penumbra
Wellbeing Works
NHS Vaccination Team
Improvement Services
Police Tayside
Faith leaders – Christian, Hindu, Sikh, Muslim
Dundee University CLD
Northwood Trust
Dundee & Angus College
Council Tenant Participation Strategy Review Group
DVVA
and more...



Dundee Fairness
Leadership Panel

Fairness and Child Poverty Action Plan Task Group

Improvement Service event

Photo Stories Project



Dundee Fairness
Leadership Panel

Photo Stories



Nothing. Nothing is good,
nothing to look forward to,
nothing to do, nothing going
well.

When you ask someone
what's wrong and they say
"nothing", but you know
that's not true.

Nothing.

Photo Stories

No matter how poor you are you
can still find a little light.



The emotional power of a photo can connect across divides, express beyond words, and can help people look at issues differently.



Dundee Fairness
Leadership Panel

Dundee Fighting for Fairness
believes that the voices and
experiences of people living in
poverty and facing inequality
matter.





Child Poverty & Inequality Strategic Leadership Group

Feedback to the Council on their Budget Consultation
Process

Working with other lived experience groups

Meeting the Moment in Scotland

Jack Evans

Senior Policy Advisor

Joseph Rowntree Foundation



Dundee Fairness
Leadership Panel

Meeting the Moment in Scotland



Jack Evans
5 Nov 2025



JOSEPH
ROWNTREE
FOUNDATION



I notice it really physically that agitation and response to my children, as not great. You're also trying to shield them from feeling this as though they can't have things, or that money is potentially an issue.

I feel the tightness in my chest, it's when they start to ask for things. I think that's just from years of not being able to do these things

Sam, Fife



What people
feel



Income after
other costs



£

Income after
housing
costs



££

Income
from work



£££

Income
from work

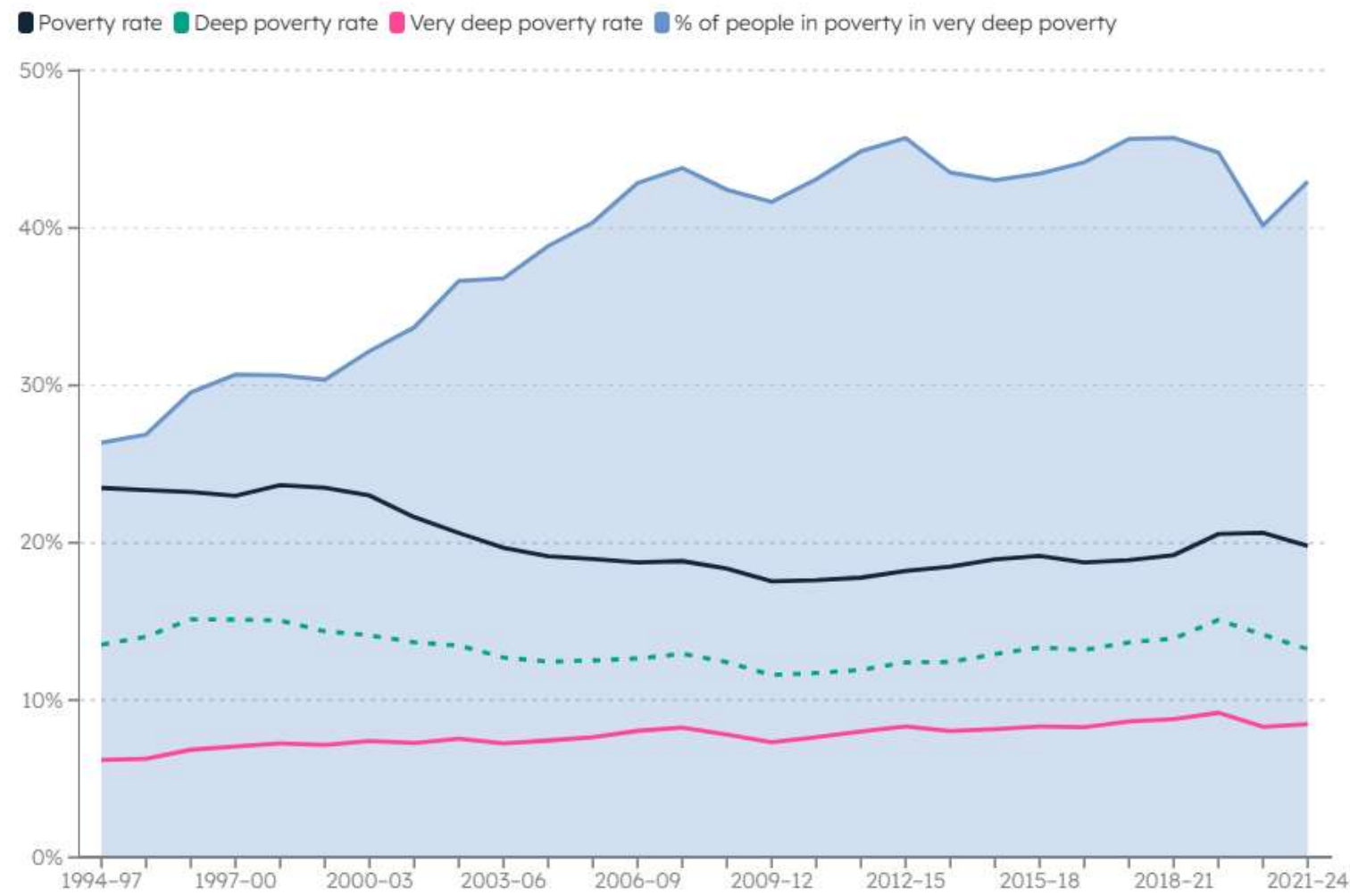


££££

Where we
measure
poverty AHC

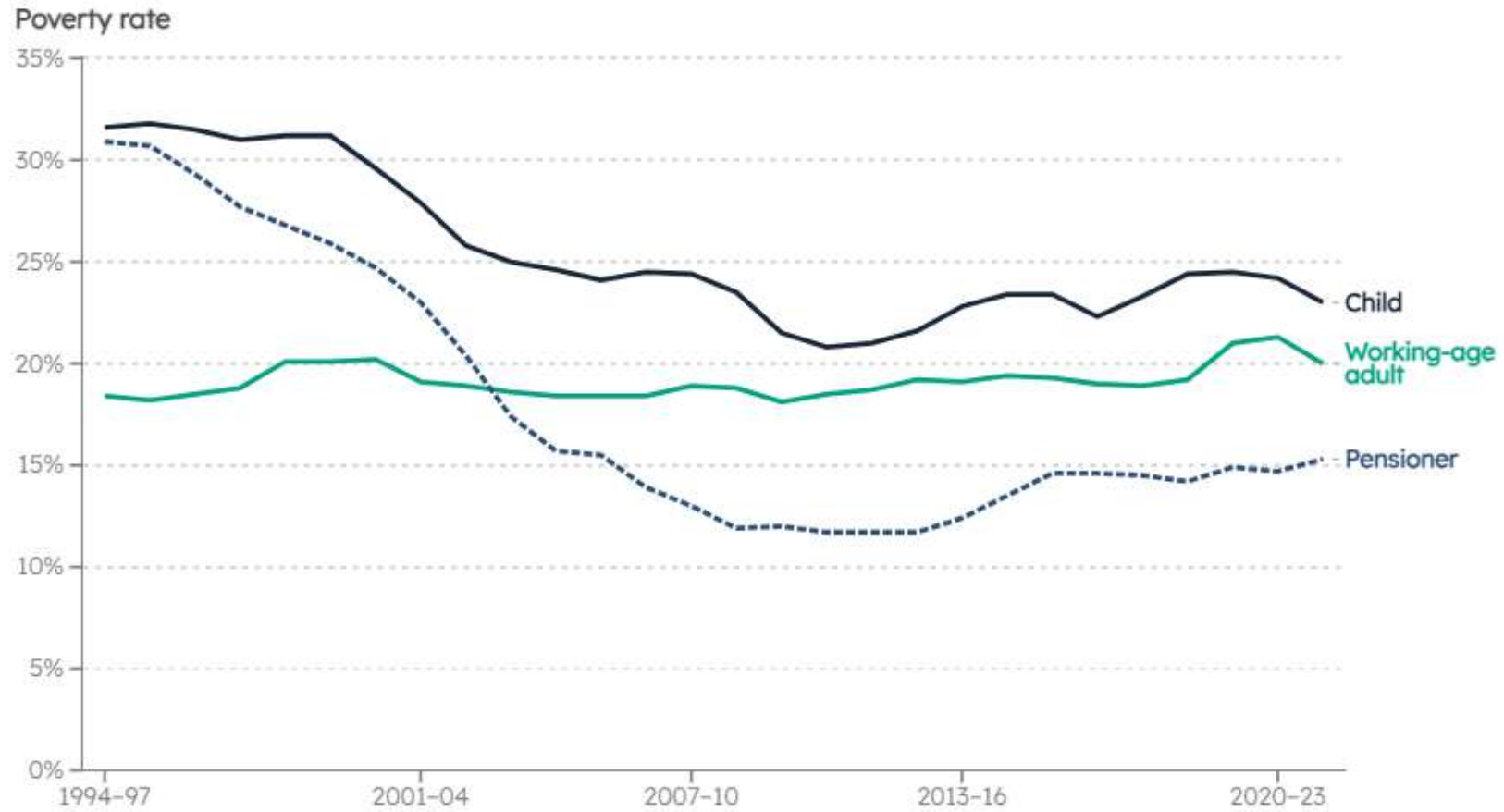


Proportion of People in Poverty by Depth



Source: JRF analysis of Household Below Average Income

Stable poverty rates



Source: JRF analysis of Household Below Average Income

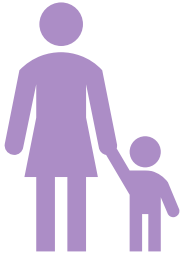
Who are the priority families?



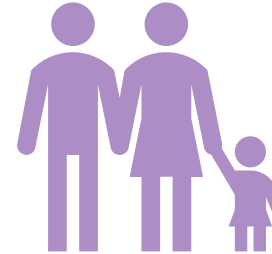
Large families



Young mother



Single parent families



Minority ethnic families



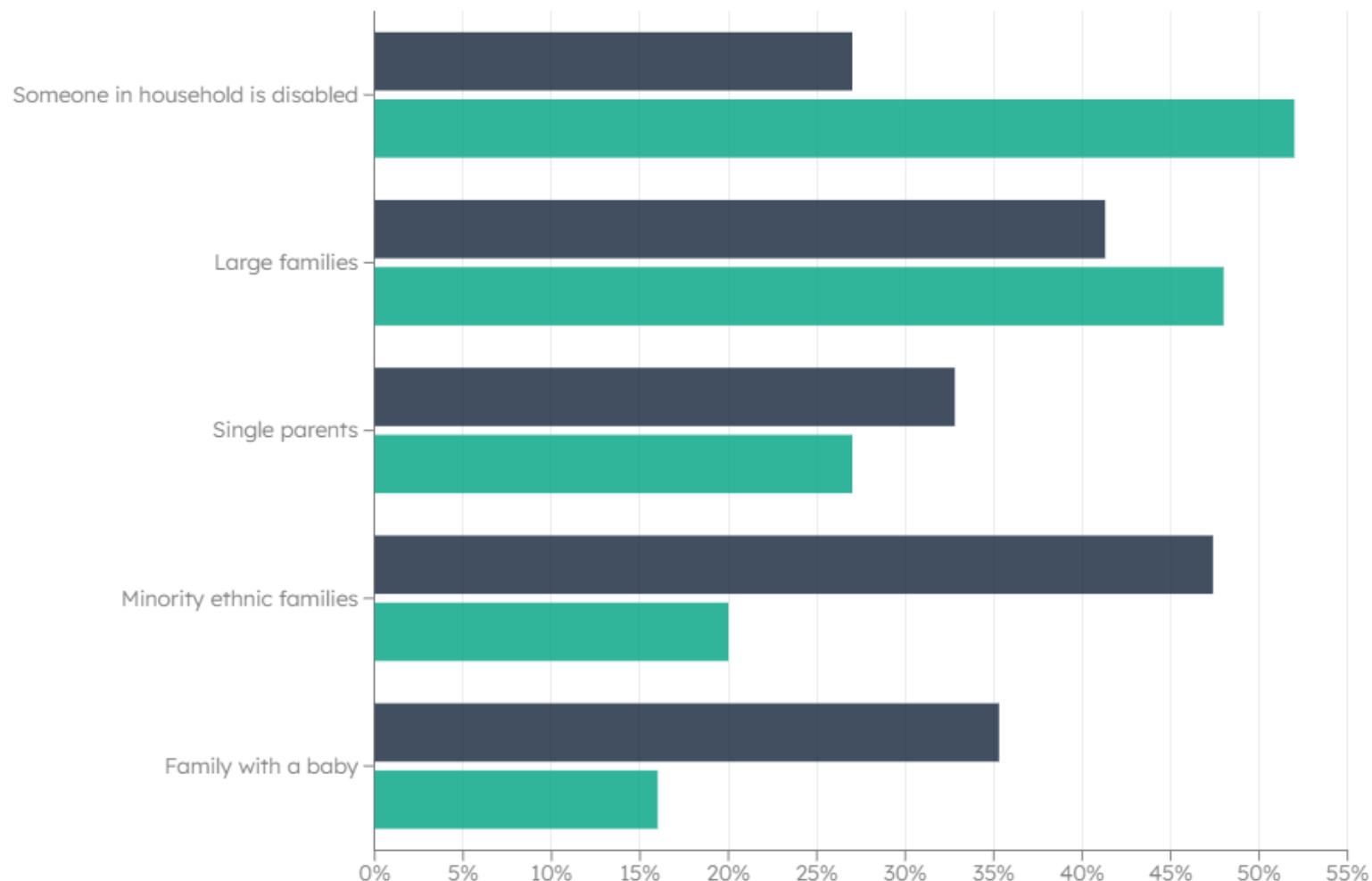
Families with a baby



Families where someone is disabled

Poverty rate and share for children in the priority families 2021 -24

■ Child poverty rate ■ Composition of children in poverty



- Children in minority ethnic families have the highest rate of poverty
- Closely followed by children in large families
- Children in households where someone is disabled make up over half of children in poverty
- Families with a baby make up a smaller proportion of children in poverty but all children pass through this group

The housing emergency

- We did not model any housing policies targeted to families with children.
- Removing the burden of high housing costs on families with children in poverty could reduce child poverty by 2 percentage points (Mitchell & Congreve, 2021)
 - Dundee has lowest levels of owner occupation in Scotland
 - Rents across Dundee are rising
- 10,000 children live in temporary accommodation
 - Dundee has around 200 and trend looks to be increasing

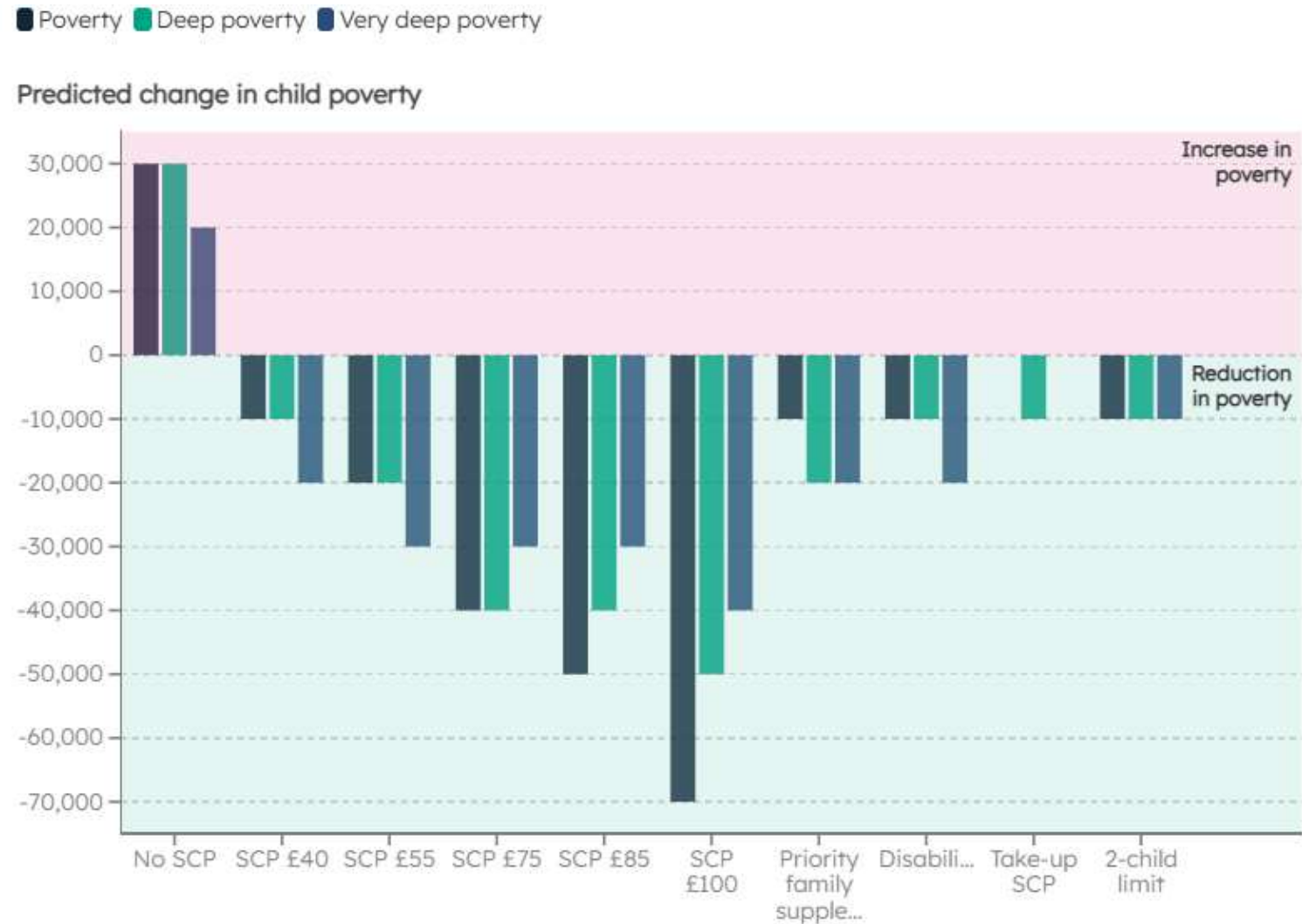


Meeting the moment with the social security system

SCP keeps 30,000 children out of poverty in 2030/31

We could reduce the number of children in poverty by:

- 10,000 by raising SCP to £40 per child per week in 2026/27
- 10,000 by providing SCP supplements to some of the priority families
- 10,000 by mitigating the 2-child limit
- Up to 10,000 by increasing the take-up of SCP to 100%



Source: JRF analysis of the Family Resources Survey using the IPPR Tax Benefit Model

Note: Impacts are rounded to the nearest 10,000. A value of zero indicates that that policy's effect on poverty is less than 5,000.

Meeting the moment with the Social Security (and other support) in Dundee

High but not the highest take up

- SCP take up (95% v 97%)
- Best Start Food Grants (86% v 88%)

Action Plan on the right track

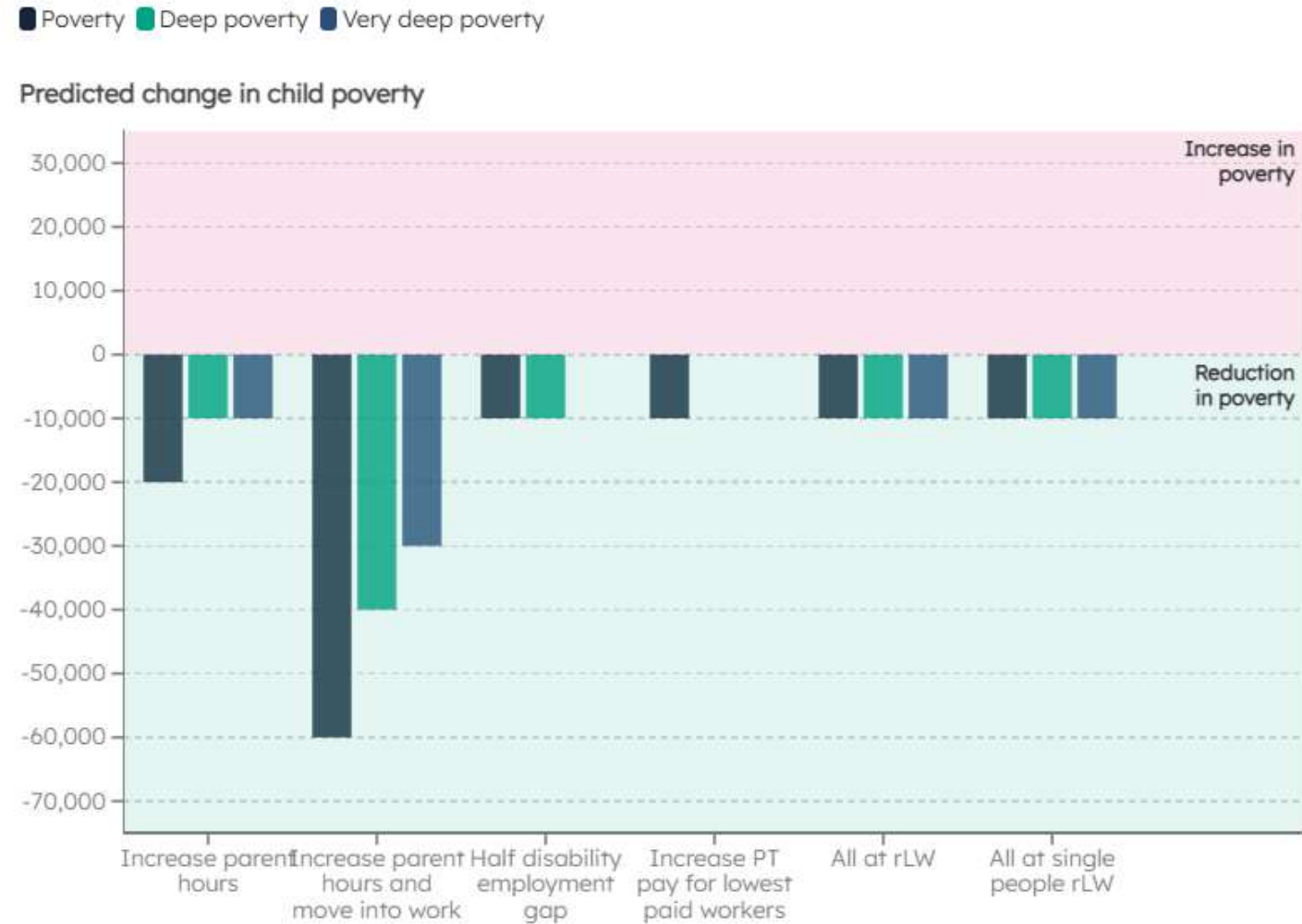
- School meals on upward trend
- Fule poverty priority matching citizens concerns



Meeting the moment in the labour market

We could reduce the number of children in poverty by:

- 20,000 by supporting parents to increase their hours of work
- 60,000 by supporting their parents into work and more work
- 10,000 by halving the disability employment gap
- 10,000 by increasing pay to the real Living Wage



Source: JRF analysis of the Family Resources Survey using the IPPR Tax Benefit Model

Note: Impacts are rounded to the nearest 10,000. A value of zero indicates that that policy's effect on poverty is less than 5,000.

Deeper Dive into Dundee Labour Market Opportunities

- Flipping the telescope on in-work poverty
- Demand and Supply-Side Solutions
- Creating a narrative around work
- Working with the economy we have while building the one we want



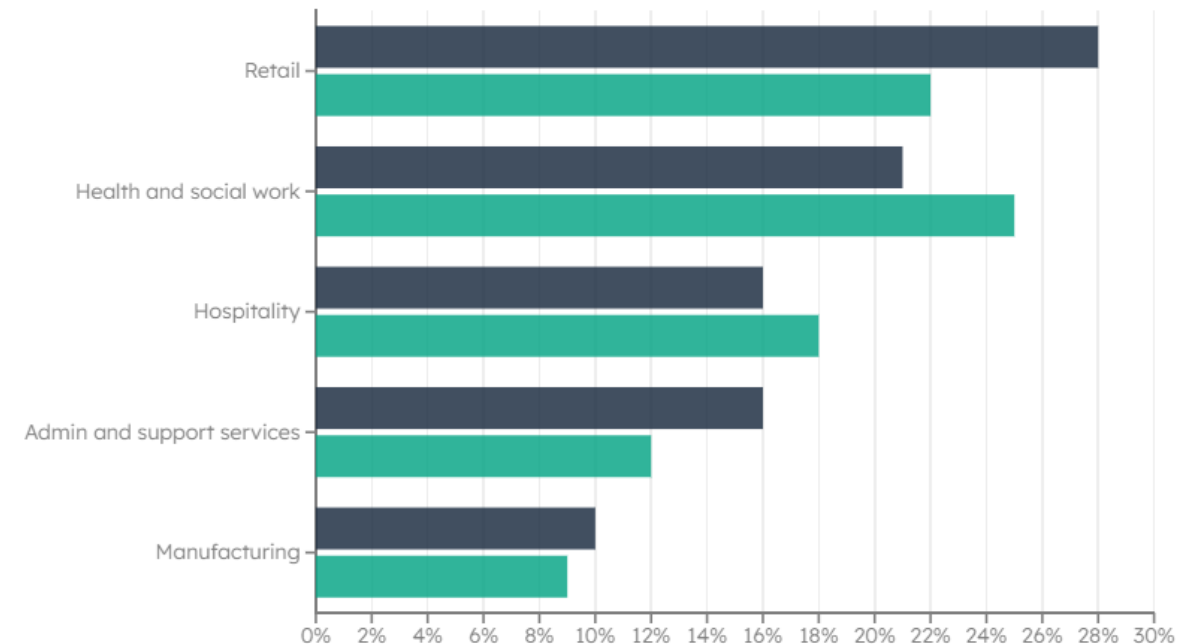
5 key priority industries where 3 in 4 of all working families in poverty have someone working

Dundee Focus

- Health and Social Care (+6%)
- Hospitality (+2%)
- Retail (+1%)
- Admin (-4%)
- Manufacturing (-3%)

Figure 3: Proportion of people in in-work poverty where one or more people in their family work in the listed industry 2018–21 and 2019–22

■ 2018–21 ■ 2019–22

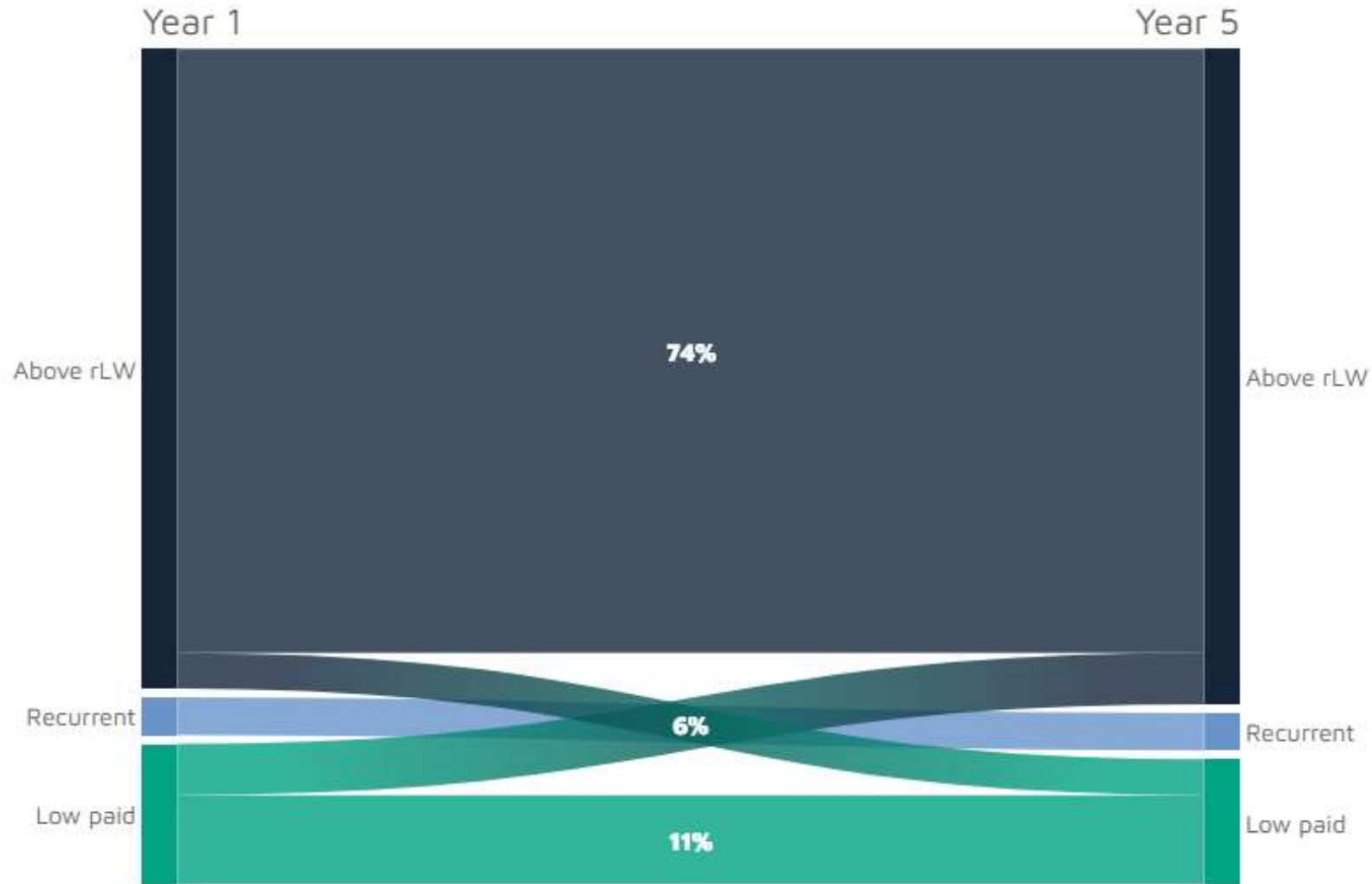


Source: JRF analysis of the Family Resources Survey

Low pay in the City

Dundee Focus

- Higher proportion in low pay than average (35 v 23)
- Media wages lower (£4k a year Scottish average)
- Good rLW progress since 2016 but at risk



Making workplaces responsive to the moment (demand side)

- Part-time and full-time paradigm change
- Training and outreach with employers
- Mapping poverty risk flux
- Targeted recruitment / push progression
- Local Authority power



The best support where it is needed most (supply side)

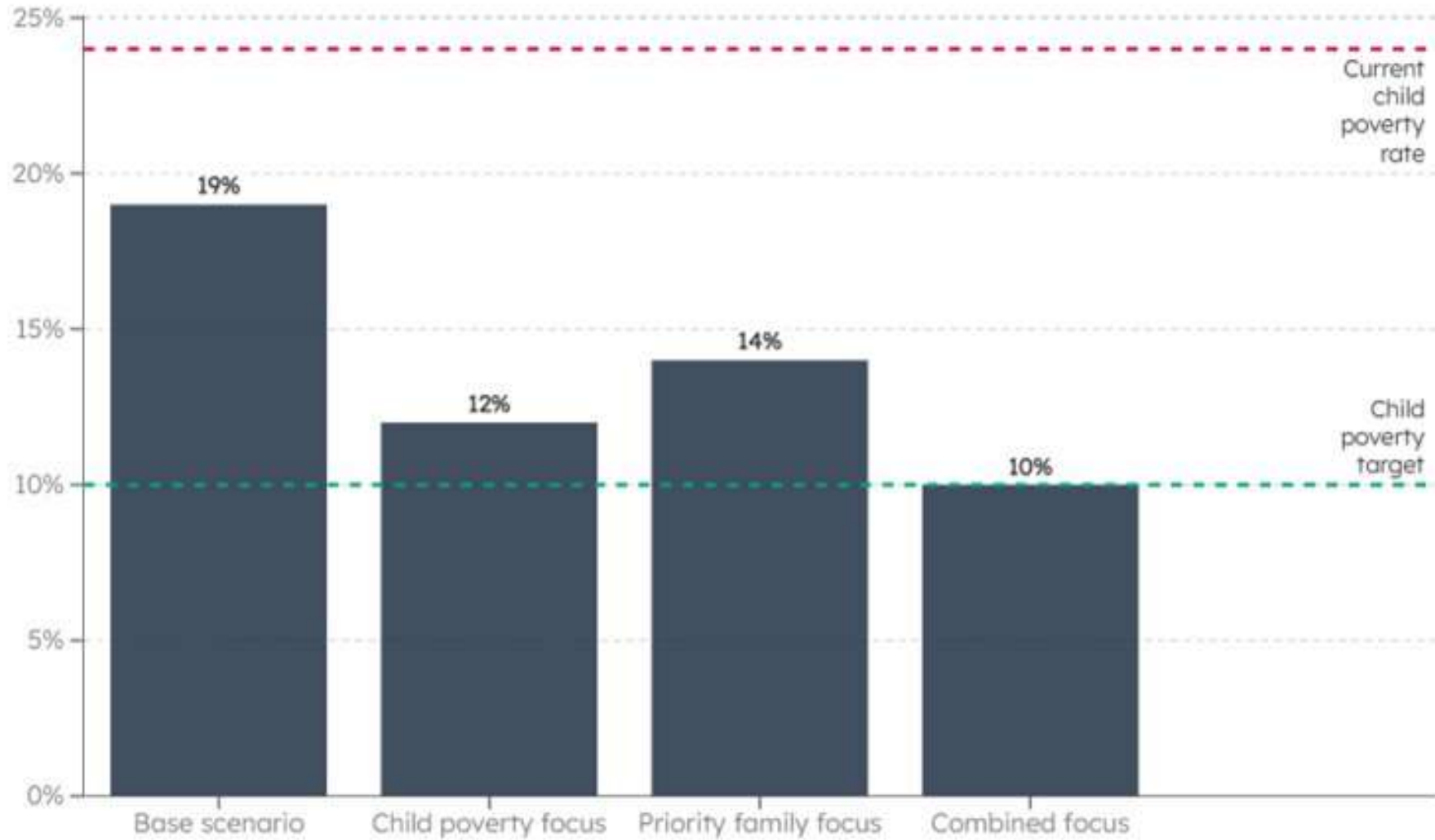
- Meet folk where they are
- Childcare
- Carers
- Health

Dundee focus

- Big opportunity on 'economic inactivity'
 - National rate is similar
 - But 'wants to work' rate is double (32 v 17)
 - Back drop of worrying rise of workless households



Combining Policy Solutions



Source: JRF analysis of the Family Resources Survey using the IPPR Tax Benefit Model

Potential Priorities

Spend some Living Wage City capital

Anti-poverty lens recruitment

Priority family smart

Tell the new story

Inward investment





Conclusions, thanks and questions

Where Next for Advice and Benefits?

Claire Christie

Dundee Citizens Advice Bureau

Craig Mason

Council Advice Services



Dundee Fairness
Leadership Panel



Advice as a Driver for Employability

Maximising income & supporting routes into work

By Claire Christie
CEO, Dundee CAB



What we want to cover

We want to show how advice helps break the poverty cycle, improves wellbeing and supports employability by maximising household income and reducing barriers.

- ☐ Why advice matters
- ☐ What is income maximisation
- ☐ Barriers to uptake
- ☐ Advice and Volunteering links
- ☐ Recommendations



Why advice matters

Advice breaks the poverty cycle by securing income, reducing debt and improving stability. Maximising income helps households afford essentials and prepare for work.

- Preventing crisis and homelessness
- Improving mental & physical health
- Building confidence and ability to self help
- Boosting employability and job retention
- Strengthening community resilience

Ultimately it saves public spending



What we mean by income maximisation



Barriers to uptake



How advice and volunteering supports employability



Stabilised income and manageable debt allows people to forward plan and creates a mental space to move into skills development and/or job seeking.



Volunteering offers up to date knowledge and experience whilst building confidence and transferrable skills and creates a viable route to training or work.



Recommendations

- Increase awareness - Run more targeted take-up campaigns for young people, older adults, carers and migrants.
- Holistic advice and referrals - Increase co-located advisers in community hubs, employability settings and GP practices.
- Digital skills through advice - Provide digital access and form filling appointments and sessions.
- Volunteering gateway - Use volunteering as a vital stepping stone to becoming job ready.



Thank you and over to Craig!

Dundee Citizens Advice Bureau

Level 4, Wellgate Centre, Dundee, DD1 1DB

Tel: 01382 21463

Email: Bureau@DundeeCAB.casonline.org.uk

05 November 2025

Scottish Charity No SC011657 Company Ltd by Guarantee SC169302

*Authorised and Regulated by the Financial Conduct Authority
FRN617450*



Dundee City Council Fairness and Advice Partnerships

Priorities in 2025/26



Dundee City C

w.dundee.gov.uk

Current Challenges

- ▶ Funding of Advice Services and Value for Money
- ▶ Understanding Advice's role
- ▶ Critical Aid in crisis situations (vs or +) Holistic Advice Provision
- ▶ Co-production

Funding of Advice Services and Value for Money

- ▶ Need for a “Mixed Economy” of Advice in Dundee
- ▶ Challenges of current Council Funding
- ▶ The non-statutory elephant in the room
- ▶ Using data to best effect
- ▶ Targeted outreach co-location reaps high reward
- ▶ Added value to Council and City plans a must
- ▶ Ability to tell stories is crucial
- ▶ Traditional doesn't cut it anymore

Understanding Advice's Role

- ▶ Too often misunderstood
- ▶ Too complex by half
- ▶ Too often simplified and distilled to simple stereotypes
- ▶ A challenge in explaining our breadth of provision

Critical Aid + Holistic Advice

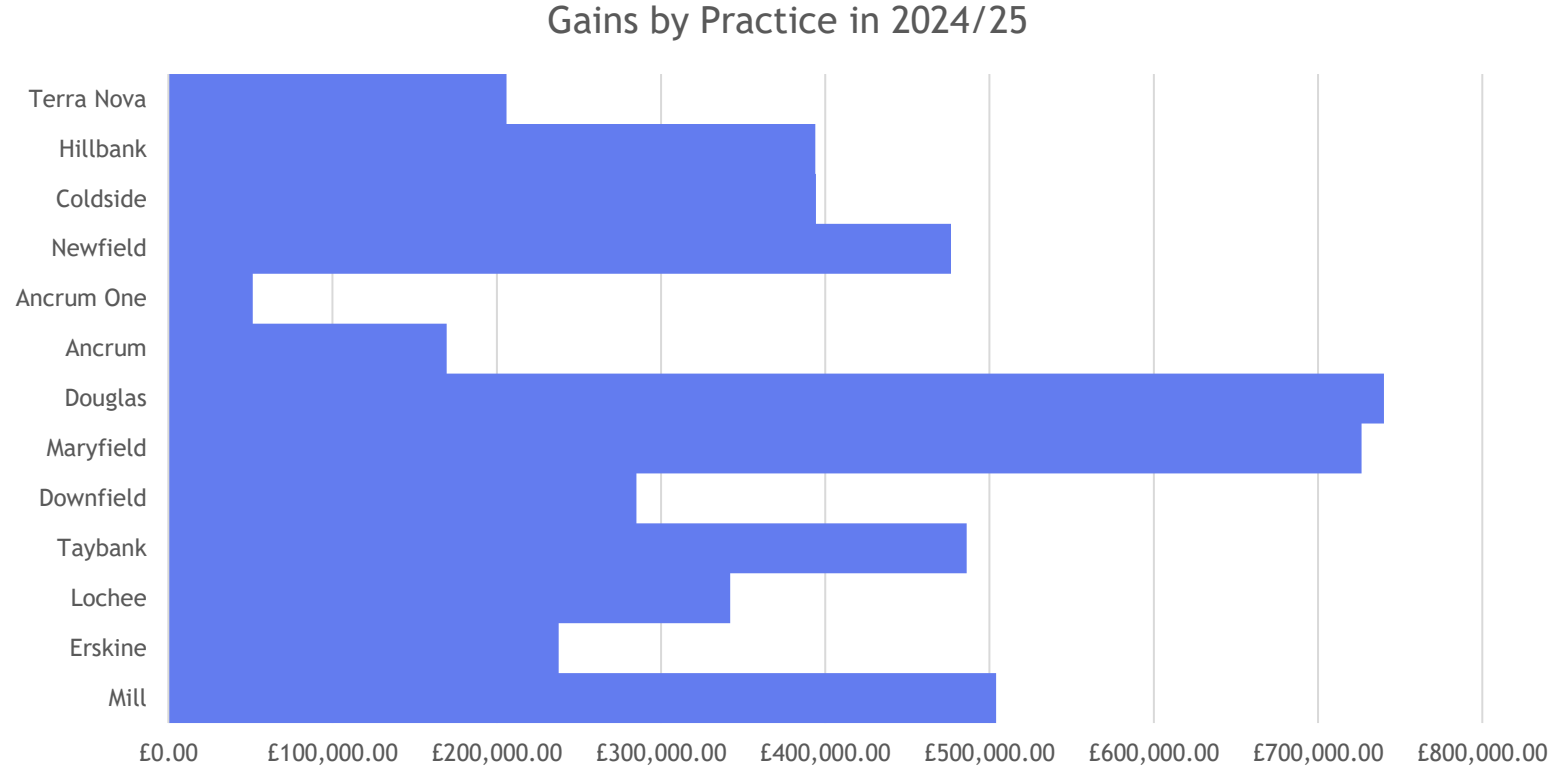
- ▶ Need for immediate support
- ▶ Income maximisation as standard
- ▶ Triaging and prioritisation
- ▶ Long term engagement challenge

What's working then?

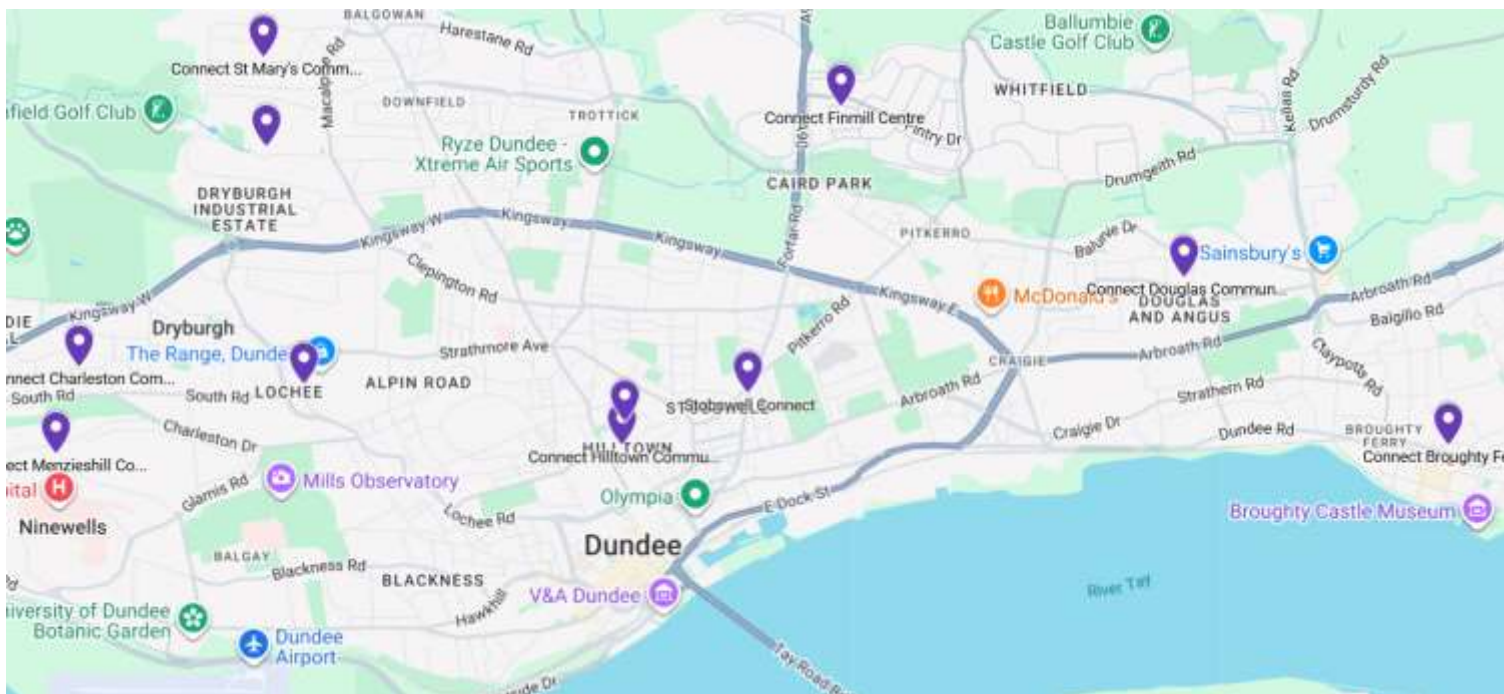
► Excellent co-location results

- GP surgeries over £5m gains in 2024/25 across 13 GP surgeries
- Superb secondary care co-location in Ninewells, seeing patients in Cancer wards, Advice Shop and Carseview. Up to £40 per £1 spent return on investment in some areas
- Dozens of Connect, Brooksbank and CAB Outreach venues across the city solving the digital access issues and providing advice in the heart of communities

GP practice gains 2024/25



Mapping coverage across Dundee



Future planning: Data driven take up campaigns

- ▶ Since February 24 the pension credit take up campaign has helped 690 households and raised £4,061,670.
- ▶ Working with our reporting team and IT colleagues on data analysis
- ▶ Future planned carers take-up campaign using Council held data to identify potential entitlements

Future plans: Co-Production and Public Debt

- ▶ Co-production of new collections processes to reduce levels of public debt (linking in with those with lived experience)
- ▶ Again using data of those struggling to pay and looking to offer assistance as early as possible
- ▶ Working with partners in Aberlour and the wider Dundee advice sector to drive systems and policy changes

A final big positive: Overall Dundee Advice Gains 2024/25

(Council Advice Services, Brooksbank Centre and Services and Dundee CAB only)

£23,437,309

(Up from £16.9 million for 2023/24)

Where Next for Advice and Benefits?

Roundtable 1



Dundee Fairness
Leadership Panel

Where Next for Employability?

Kiley West
Employability Team Leader
Dundee City Council



Dundee Fairness
Leadership Panel



Employability in Dundee

Kiley West, Team Leader

Carol McKelvie, Development Officer



- Free service for Dundee residents and employers
- Support to find work, education and training opportunities
- Recruitment opportunities for local businesses

Our Strategic Partners:



Pathway:

- All ages
- No wrong door
- Access any/all



Employer Led Work Academies

How they work

- A 2-6-week training packages - designed around employer needs
- Accredited, vocational, and workplace training
- Customers are invited to attend by referral partners and self-referral routes
- All customer expenses are paid e.g. travel, lunches, clothing/equipment
- Delivery of academies has mainly been led by:



In School and Post School Activity

Weekly multi agency meetings

5-week rotating agenda

* Unconfirmed

* Unemployed

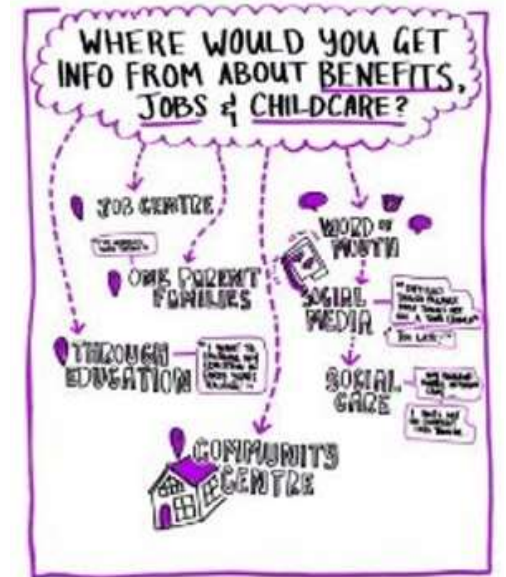
* Economically Inactive and Ill Health

* Care Experienced (up to 26) and Young Carers

* Review of College Students for those nearing withdrawal



discover
WORK



Hidden Talent

Dundee has a substantial pool of hidden talent. Our services will focus on enabling people who are currently outside of the labour market to find opportunities in our city's thriving economy. Our analysis* estimates the following hidden labour market groups can be supported:

11,300
people who could enter
the labour market

4,750
Unemployed

4,700
Economically Inactive
who want to work

1,850
Economically Inactive
who don't want to work

Among those who could enter the labour market there are:

3,585
Equality Act Disabled

4,700
Experiencing Poor Mental Health

*Sources include: DWP Stat Xplore; End Child Poverty; NOMIS; ONS; Scottish Government; Skills Development Scotland; UK Government. As per analysis undertaken April 2022.

The Dundee Fairer Futures Approach

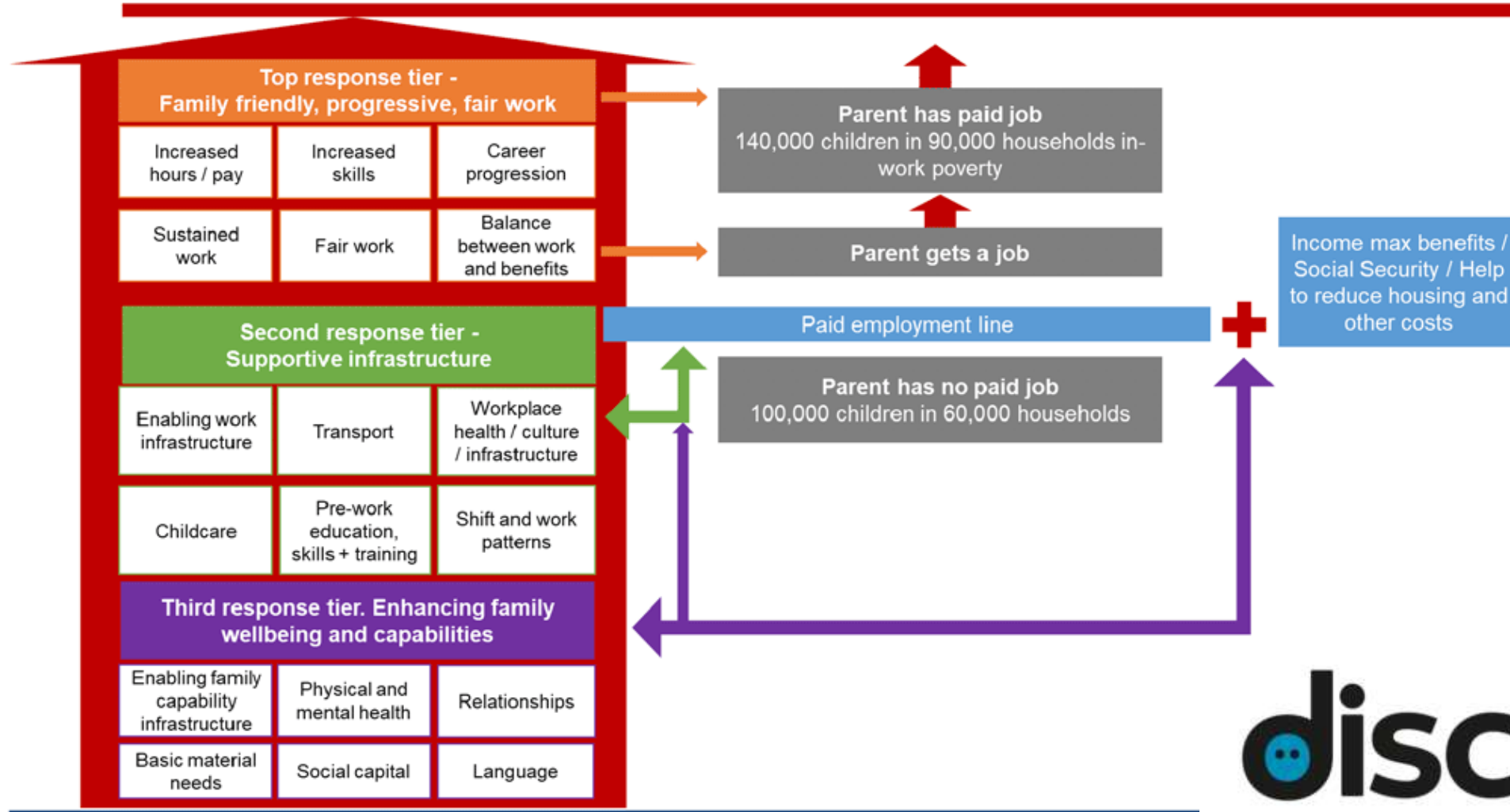
- Using data to inform targeting and door stop outreach
- Multi Agency team of Key Workers
- Taking time to listen, understand and build trust
- Empowering – and having the right support workers
- Investing in partnership and joint working
- Community involved in Service Design

"Only a handful of them were actually already engaging with services. And that to me was a massive eye opener... that actually with a wee bit of targeted engagement and creating a space that people felt able to go to, all of a sudden, you're completely overrun. So, you've gone from nobody's accessing this stuff to actually the demand is pretty mega."

INTERVIEWER: "So if (key worker) hadn't called round, what would you have done about (benefits issue experienced)?"

INTERVIEWEE: "Just sat here panicking alone because I don't know who to speak to about things like that. I don't know who to turn to, who to go to, to ask for help or advice or anything like that."

OUT OF POVERTY

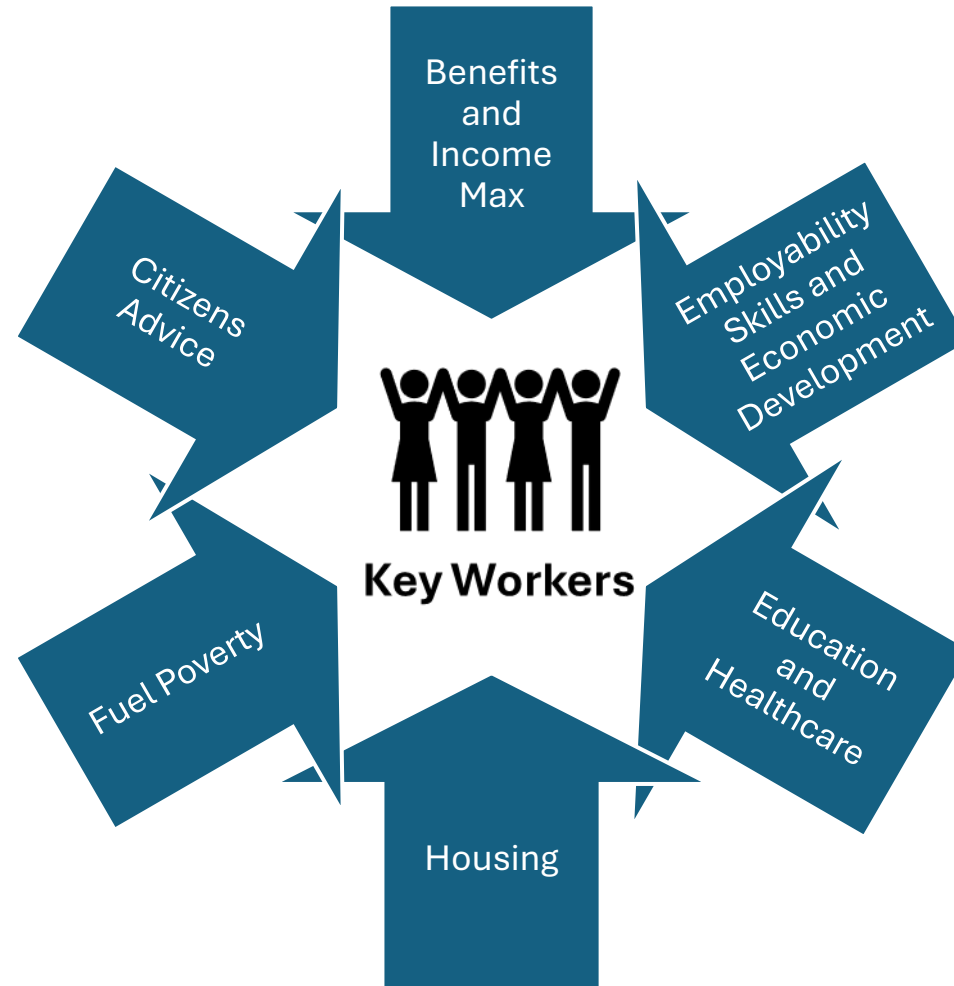


discover
WORK

SHOWCASE THE STREET



Partnerships are essential.....



What can we do together?

What more can we do
to work together to
support the 'Hidden
Unemployed Group'?

Do we need to bring
other partners to the
table?

What else can we do
to get Dundee
Working?

Where Next for Employability?

Roundtable 2



Dundee Fairness
Leadership Panel

Lunch Break

Afternoon Session
starts at 1:15

Please network and visit
the image gallery during
the break



Dundee Fairness
Leadership Panel

Where Next for Families with Disabilities and Carers?

Neil Campbell
Dundee Carers Centre



Dundee Fairness
Leadership Panel

Where Next for Families with Disabilities?

Neil Campbell
CEO, Dundee Carers Centre



Caring and Disabilities in Dundee

- According to the 2022 Scotland Census, **21.6% of Dundee's population** lives with a long-term illness, disease, or condition.
- Estimated **19,232** unpaid carers in Dundee, inc. 840 young carers. (*Scotland's Carers Update – March 25*)
- 2 in 3 of us will become an unpaid carer at some point in our lives.
- 50:50 chance of becoming a carer by the time we reach our 50s.
- In Dundee, as in the rest of Scotland the number of hours of care provided is increasing year-on-year.



“The Price of Inclusion: Understanding the Hidden Costs of Disability and Unpaid Care in Scotland”

- 2024-2025 Research Project by Dundee University’s Business school led by Dr Seemab Farooqi.
- Local carers, people with disabilities and services participated in surveys, interviews and focus groups.
- The study explored how financial, systemic, and emotional costs affect disabled people and unpaid carers across Scotland.
- *Findings shared with permission.*



Hidden Costs of Inclusion

- Disabled people and unpaid carers face extra financial, emotional, and practical costs every day.
- From higher energy bills to paying for specialist transport or equipment, these hidden expenses add up, often leaving people struggling to make ends meet.



Everyday Costs That Keep Adding Up

“Our house has to stay at 23 degrees for health reasons... our energy bill is more than double what my friends pay.”

- Interview with Carer and Parent



Carrying the Financial & Emotional Burden

“I had to give up my job to care for my daughter.
There’s no recognition of what that really costs.”
– *Interview with Carer*



A System That Feels Hard to Navigate

“Some forms are 80 pages long. They say it’s fair, but the system doesn’t see people, just paperwork.”

- Advice Worker, Support Organisation



Gaps in Services and Support

“We could double our staff tomorrow and still not meet the demand. People are desperate for advice and support.”

- Local Organisation Representative



Multiple Barriers, One System

“Sometimes my son has to translate at appointments. It’s embarrassing and not fair on him.”

- Parent and Carer



What Needs To Change?

“Dignity and respect should be more than words. They should be what people feel when they use the system.”

- Disabled Participant



Where Next for Families with Disabilities and Carers?

Roundtable 3



Dundee Fairness
Leadership Panel

Where Next for Other Vulnerable Families?

Fiona Taylor & Sarah Stewart
One Parent Families Scotland

Kristina Piggott
Dundee International Women's Centre



Dundee Fairness
Leadership Panel

Dundee Fairness – Single Parents focus

5 November 2025



**One Parent
Families Scotland**
changing lives, challenging poverty

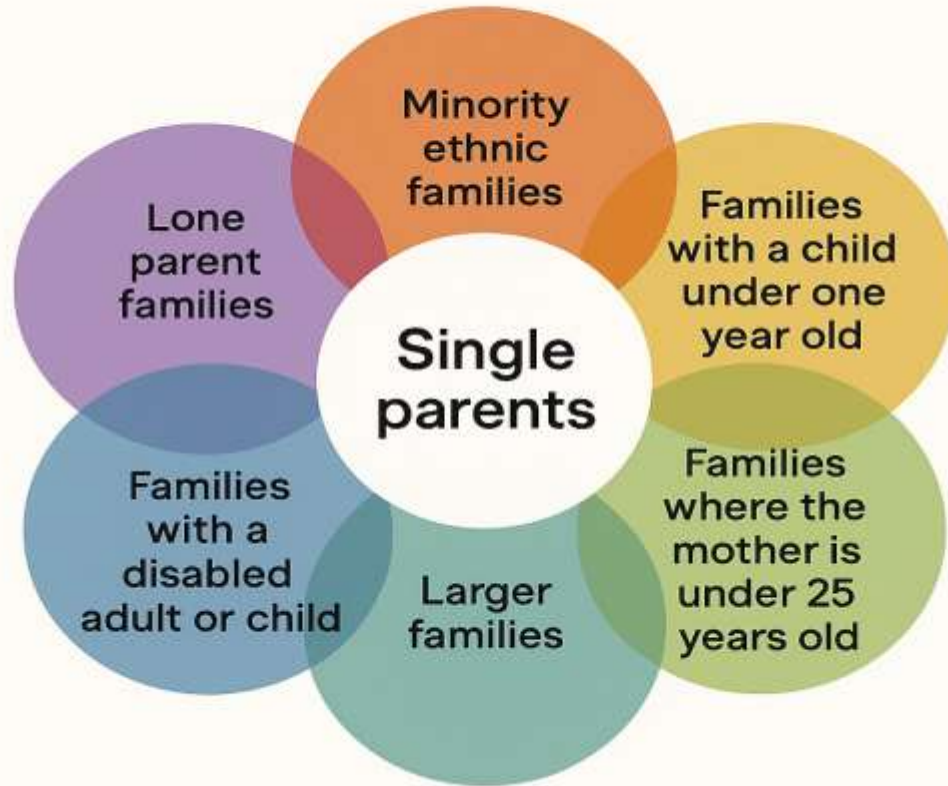
Single parents in Scotland – Myth Busting

- 144,000 single parent families in Scotland
- 1 in 4 families in Scotland are Single Parent Families.
- 80% of single parents are aged between 25 and 50
- Less than 1% are under 20
- 65% with dependent children are in paid employment



Intersectionality and why it matters

Scottish Government Poverty Priority Areas





In Dundee, being a parent on benefits feels like every form you fill out is a reminder that people think you're failing before you've even begun.

SINGLE PARENT





Being a single parent is hard, and judgment makes it worse. I'm a single parent because my husband died when they were just 1 and 3. Life is tough, and judgment makes it tougher.

SINGLE PARENT



Stigma & Shame



Persistent Negative Stereotypes

Single parents face stereotypes of laziness and irresponsibility reinforced by media and societal attitudes.



Emotional and Social Impact

Stigma causes feelings of isolation, shame, and lowered self-esteem among single parents in Dundee.



Barriers to Support and Inclusion

Fear of judgment leads to social exclusion and reduced engagement with services and employment opportunities.



Need for Cultural Change

Addressing stigma requires recognising single parents' resilience and challenging harmful societal narratives.



Case Study – Sally’s Journey with OPFS

Situation:

- 32 year old single mother of two, recently separated; works part-time but struggles financially.
- Ex partner refuses to provide financial support
- Faces judgment and stigma from colleagues and community.
- Avoided seeking help due to fear of being labelled “unable to cope.”

Impact:

- Isolation, anxiety, and guilt.
- Delayed accessing support until crisis point.
- Concern for children’s wellbeing intensified stress.

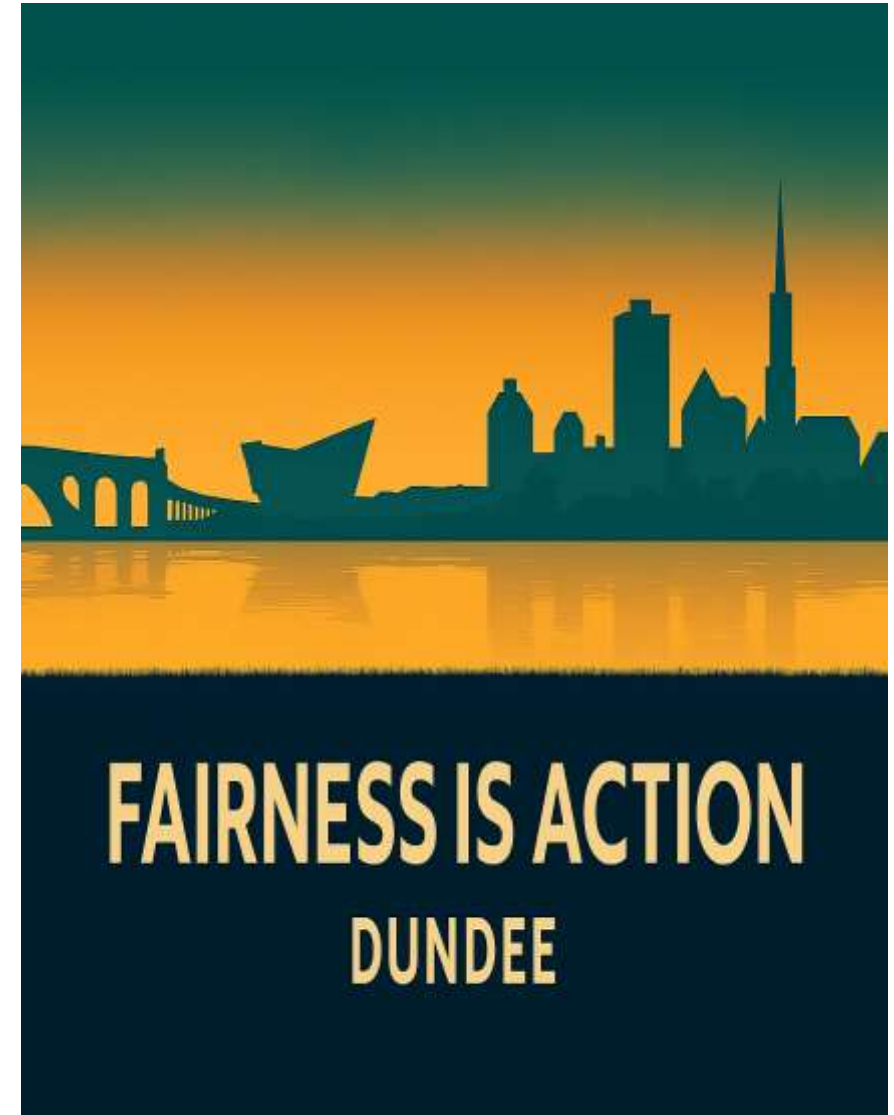
OPFS Intervention & Outcomes:

- **Practical Support:** Financial health check, Child Maintenance conversations and support, benefits advice and budgeting help.
- **Emotional Support:** Peer groups and counselling reduced isolation and stigma.
- **Confidence Building:** Empowered Sally to seek help without shame.
- **Positive Change:** Improved financial stability, mental health, and parenting confidence.



Key Messages

- **Single Parents Are Resilient – Recognise strength, not judgment.**
- **Stigma Hurts, Support Helps – Inclusive policies and community support change lives.**
- **Intersectionality Matters – Tailored solutions for overlapping challenges.**
- **Fairness Is Action – Practical and emotional support empower families.**
- **Together We Can Drive Change – Challenge harmful narratives and promote dignity.**



A BETTER FUTURE FOR OUR CHILDREN

80+ One Parent Families Scotland
changing lives, challenging poverty since 1984

WHAT DOES 2050 look like?



Stay in touch!

Visit our website



Use our free helpline & live chat service



Follow us on social media @opfs



Sign up to our newsletter





Poverty, Intersectionality and BME Families in Dundee

Insights from Dundee International Women's
Centre

Presented by Kristina Piggott,
Manager – Strategy & Operations
5th November 2025



Dundee International Women's Centre

Charity Reg. No. SCO14949





Setting the Scene

- Dundee has some of the highest deprivation levels in Scotland.
- Around one in five residents were born outside the UK.
- Growing poverty among BME and migrant families.
- Intersectionality deepens inequality: poverty + race + gender + immigration status.



Dundee International Women's Centre

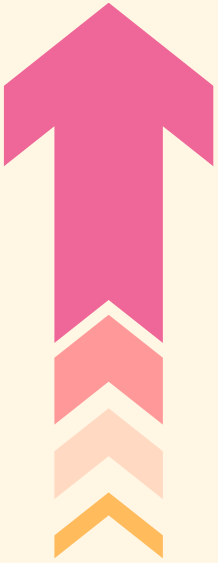
Charity Reg. No. SCO14949





What We See at DIWC

- Increase in women with No Recourse to Public Funds (NRPF).
- Growing reliance on community networks for food and housing.
- Language barriers blocking access to advice and employability services.
- Fear, stigma and distrust in reaching out for help.
- Poverty impacts mental health and wellbeing.



Dundee International Women's Centre

Charity Reg. No. SCO14949





Systemic Gaps



- Limited interpreters and culturally sensitive support.
- Families with restricted status often left out unintentionally
- Policies assume equal access – reality is different.
- Community groups fill gaps, but lack stable funding



Dundee International Women's Centre

Charity Reg. No. SCO14949

Case Study 1: Family with NRPF

- Family seeking asylum
- No income
- Sharing flat
- Pregnant mother
- No right to work or benefits



Dundee International Women's Centre

Charity Reg. No. SCO14949

Case Study 2:

BME Woman with Settled Status

- Domestic abuse survivor with settled status.
- Housing application paused due to language barrier.



RENTAL
APPLICATION

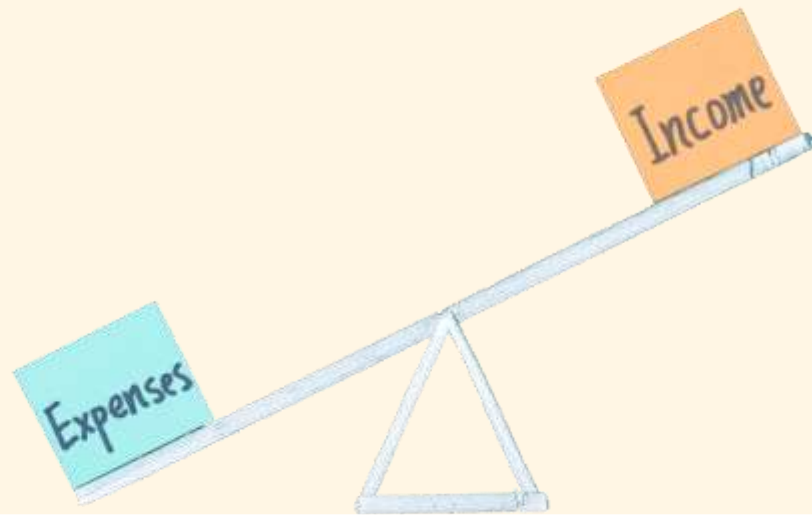


Dundee International Women's Centre

Charity Reg. No. SCO14949

Case Study 3:

A long settled working family at risk of eviction after sudden income loss



Dundee International Women's Centre

Charity Reg. No. SCO14949

The Bigger Picture

- Joseph Rowantree Foundation: BME families more likely to face persistent poverty.
- Women face multiple disadvantages – care, low pay, restricted work access.
- DIWC sees families falling through cracks due to visa status and fear.
- BME women underrepresented in mainstream employability programmes.

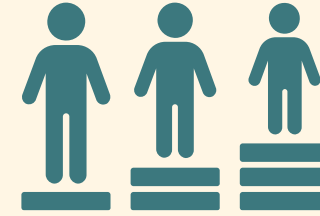


Dundee International Women's Centre

Charity Reg. No. SCO14949

What Needs to Change

- Fairness = recognising different starting points.
- Adapt services for visa and language barriers.
- Bring lived experience into policy.
- Stronger collaboration between statutory and community partners.



Closing Message

“When a mother and her family with no income turns to her community instead of our services, we must ask – what door was closed to her?”



Dundee International Women's Centre

Charity Reg. No. SCO14949



Thank You

Dundee International Women's Centre

Empowering women, building community, tackling inequality together.



01382 462058



mail@diwc.co.uk

<https://diwc.co.uk/>

<https://diwc.co.uk/rise-and-shine/>



Dundee International Women's Centre

Charity Reg. No. SC014949

Where Next for Other Vulnerable Families?

Roundtable 4



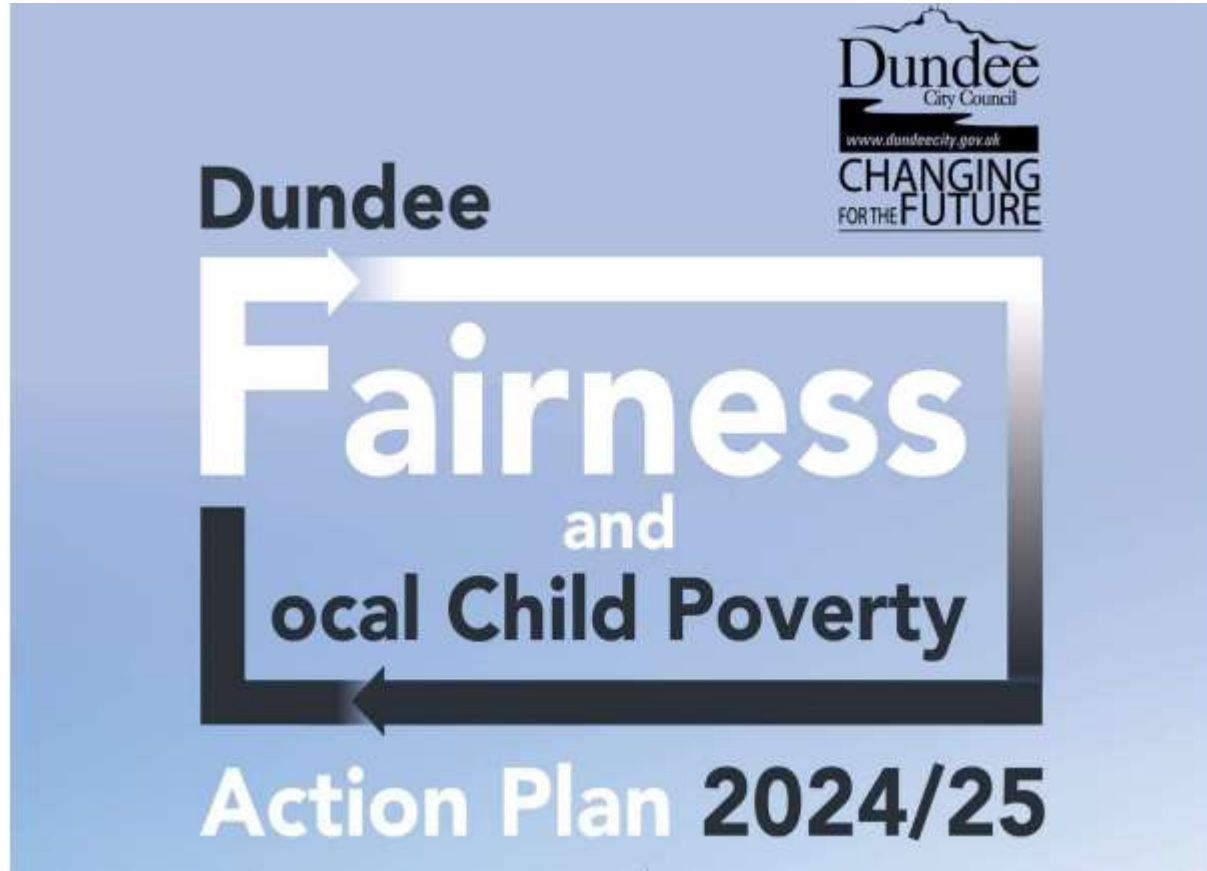
Dundee Fairness
Leadership Panel

Dundee Fairness Annual Report 2024/25

Peter Allan
Community Planning Manager
Dundee City Council



Dundee Fairness
Leadership Panel



Peter Allan | Dundee City Council



Social Inclusion and Stigma

Achievement



Challenge

17%



of Dundee City respondents in the 2023 Scottish Household Survey stated that their household doesn't manage well financially. This is higher than the Scottish proportion which stood at 9%

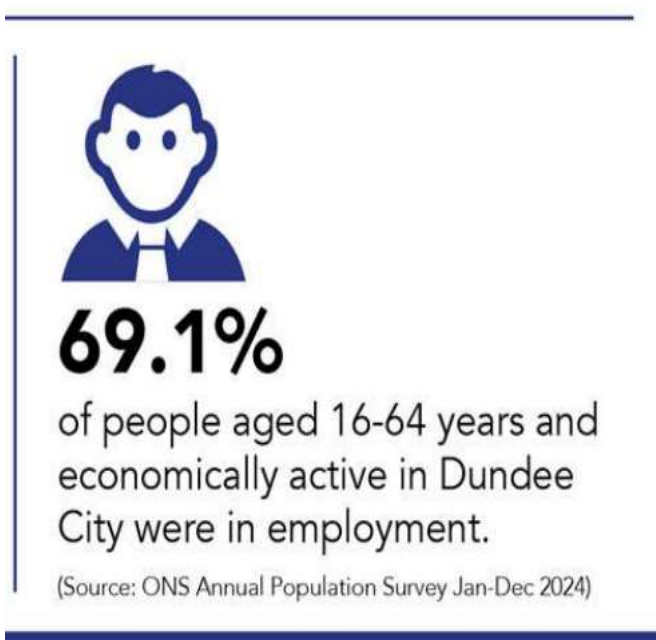
(Source: Scottish Household Survey 2023)

Work and Wages

Achievement



Challenge



Benefits and Advice

Achievement

594 

households reached by the Pension Credit Take-Up Campaign, and £3,222,802 raised in client gains as at 23/05/25, since commencement in February 2024.

(Source: DCC Corporate Services supported by CAB & Brooksbank)


£17,008,442*

generated from income maximisation support.

(Source: DCC Corporate Services
*provisional figure for 2024/25)

Challenge

4,476*
(18.7%*)



of children aged under 16 years are living in relative low income families (before housing costs).

(Source: DWP Children in low income families local area statistics UK financial year 2023/24 – figures are provisional*)

Attainment and Child Poverty

Achievement



£552,497

claimed for
households with
pupils by co-location
in schools project
during 2024/25

(Source: DCC Corporate Services)

Challenge

10,208



children (aged 0-15 years) live in 20% most deprived data zones, this accounts for 43.4% of the children in that age group in Dundee City overall.

(Source: SIMD 2020 20% Most Deprived Data Zones and National Records of Scotland 2022 Small Area Population Estimates)

The majority of Children (0-15 years) who live in East End (80.3%) Coldside (66.1%) and Strathmartine (49.4%) live in a data zone ranked in the 20% most deprived.

(Source: SIMD 2020 – 20% Most Deprived data zones and National Records of Scotland Mid 2022 Small Area Population Estimates)

Health and Inequalities

Achievement

96,730 

number of patients in Dundee who can now access a co-located welfare rights officer in their GP Practice for help with benefits, debt and energy costs in 2024/25.

(Source: DCC Corporate Services)

Challenge

25.7% 

of those in Dundee City said that they had a health problem or disability that limited their day-to-day activities either a little or a lot. This was slightly higher than the Scottish average of 24.1%.

(Source: Scottish Census 2022)

Housing and Communities

Achievement

£4m 

of Discretionary Housing
Payments/Local Authority
Hardship Fund Payments
awarded to tenants.

(Source: DCC, Corporate Services
2024/25)

Challenge

431



households (including 227
children) in temporary
accommodation in Dundee City

(Source: Dundee City Council – Neighbourhood Services
figure as at 31st March 2025)

Areas for Improvement

- Number of workless households in Dundee
- Number of applications assessed as homeless or threatened with homelessness
- Percentage of Primary 1 children classified as obese or overweight



Peter Allan | Dundee City Council



Thank you for participating in:

*Where Next for
Fairness in Dundee?*



Dundee Fairness
Leadership Panel