

REPORT TO: COMMUNITIES COMMITTEE - 24 OCTOBER 2005
REPORT ON: COMMUNITY LEARNING AND DEVELOPMENT ACTION PLAN
REPORT BY: DIRECTOR OF LEISURE AND COMMUNITIES
REPORT NO: 603-2005

1.0 PURPOSE OF REPORT

- 1.1 This report summarises the development of Community Learning and Development (CLD) Action Plans and recommends approval of the summary documents for publication by the Dundee Partnership.

2.0 RECOMMENDATIONS

It is recommended that the Committee agrees to:

- 2.1 note the rationale, structure and processes underpinning the development of the CLD Action Plans.
- 2.2 recognise the high level of collaboration, co-operation and support between Dundee City Council, partner agencies and community stakeholders in the development of the CLD Action Plans.
- 2.3 refer the draft summary documents (see attached) to the Dundee Partnership Lifelong Learning Theme Group for publication.
- 2.4 continue to work with public, private and voluntary sector agencies in partnership with local communities to address their community learning and development needs.
- 2.5 refer the responsibility for implementation, monitoring and evaluation of the CLD Action Plans to each local Community Learning and Development Partnership Group.
- 2.6 instruct the Director of Leisure and Communities to report progress on the implementation of the CLD Action Plans on an annual basis.

3.0 FINANCIAL IMPLICATIONS

- 3.1 The implementation of CLD Action Plans will be conditional on the development priorities being contained within the resources of the Dundee Partnership and other sources of external funding.

4.0 LOCAL AGENDA 21 IMPLICATIONS

CLD Action plans should in principle:

- 4.1 improve local residents access to the skills, knowledge and information needed to enable everyone to play a fuller part in society.
- 4.2 make opportunities for culture, leisure, recreation and learning more readily available to all.
- 4.3 involve all sections of the community in decision-making, encouraging collective action and engagement in the political process.

5.0 EQUAL OPPORTUNITIES IMPLICATIONS

- 5.1 Local CLD Partnerships will promote equality by consulting target groups on issues that affect them and making the delivery of community learning and development programmes more sensitive to the needs of all sections of the community.
- 5.2 CLD Action Plan summaries will be made available in other formats and languages on request and will be written in plain English.
- 5.3 Action will be taken to increase participation in civic and community life.

6.0 WHAT IS COMMUNITY LEARNING AND DEVELOPMENT?

6.1 The Scottish Executive believes that Community Learning and Development has an essential role in achieving their priorities of improving public services and promoting community regeneration, social inclusion, lifelong learning and active citizenship. Community Learning and Development is described as a way of working with and supporting communities to increase the skills, confidence networks and resources they need to tackle problems and grasp opportunities.

7.0 NATIONAL PRIORITIES FOR COMMUNITY LEARNING AND DEVELOPMENT

7.1 Three national priorities have been sent out by the Scottish Executive:

- **Achievement through learning for adults**

Raising standards of achievement in learning for adults through community-based lifelong learning opportunities incorporating core skills of literacy, numeracy, communications, working with others, problem-solving and information communications technology (ICT).

- **Achievement through learning for young people**

Engaging with young people to facilitate their personal, social and educational development and enable them to gain a voice, influence and a place in society.

- **Achievement through building community capacity**

Building community capacity and influence by enabling people to develop the confidence, understanding and skills required to influence decision making and service delivery.

These priorities are to be reflected in the CLD strategies and action plans.

7.2 Each Community Planning Partnership area is required to implement the CLD guidance and set up CLD partnerships. The report by the HMle in 2002 outlining the processes for putting community learning plans into practice, confirmed the value of partner agencies working together. The Executive are looking to local Community Learning Partnerships to build on this and focus on the national priorities and links to the Community Planning Partnership.

8.0 COMMUNITY LEARNING AND DEVELOPMENT STRATEGY

8.1 Dundee's Community Learning and Development Strategy 2005-2008 was approved in December 2004 and can be downloaded via the Dundee Partnership website www.dundeepartnership.co.uk.

8.2 The Community Learning and Development Strategy has been agreed by all partners. It reflects Community Plans and related strategies and sets out the framework for operational planning through the Community Learning and Development Action Groups, and demonstrates community involvement.

8.3 The Community Learning and Development Strategy:

- Sets out a joint vision for Community Learning and Development
- Highlights the priorities for CLD in relation to the three national priorities and sets out targets
- Provides evidence that these priorities have been based on engagement with local individuals, groups and communities
- Details the partners involved and the operating principles they will follow
- Sets the framework for operational planning of CLD including the areas to be covered by CLD Action Plans
- Details measures for supporting skill development of paid and unpaid staff involved in CLD
- Identifies how the Partnership will monitor and evaluate quality.

9.0 COMMUNITY LEARNING AND DEVELOPMENT PARTNERSHIPS

9.1 The Dundee Community Learning and Development Partnership brings together the public and voluntary sector organisations which provide CLD. It operates at a citywide level and was responsible for the production of the Community Learning and Development strategy.

9.2 In every area of the city, the Community Learning and Development Partnership will deliver:

- Joined-up support between organisations/departments for the implementation of Local Community Plans and to co-ordinate public service delivery (Neighbourhood Partnership Networks).
- Co-ordinated support for community learning and development (through the work of the Community Learning and Development Partnerships).
- Community learning and development programmes which reflect local and strategic priorities (Community Learning and Development Action Plans).

10.0 FRAMEWORK FOR IMPLEMENTING COMMUNITY LEARNING AND DEVELOPMENT LOCALLY

10.1 The Community Learning and Development Strategy sets the broad framework for operational planning. The operational implementation of CLD will be achieved by the production of Community Learning and Development Action Plans.

10.2 Community Learning and Development Action Plan Partnerships

These partnerships:

- identify the most disadvantaged communities and those at risk of becoming disadvantaged, and target Learning and Development support towards these communities.
- agree a shared agenda for change based on assessment of needs, audit of CLD provision and gap analysis.
- contribute to the development of an integrated community engagement strategy.
- bring together community and partner agencies to set out their agreed agenda for change.
- identify Community Learning and Development priorities from the Local Community Plans (see Appendix 2).
- undertake progress reviews of the community learning and development targets (see Appendix 3).
- link with the Community Learning and Development Strategy Group, providing information to and from the Local CLD Action Plans.
- produce a Community Learning and Development Action Plan.

10.3 Community Learning and Development Action Plans - Purpose

The aim of the Community Learning and Development Action Plan is to identify and set out proposals for dealing with community needs, aspirations and priorities. These plans will enable communities and partner agencies to set out their shared agenda for change.

10.4 Monitoring and Evaluation

The aim of the process is to ensure that community learning and development services are consistent and of high quality. It will be dependent on rigorous self-evaluation of the service provided and the outcomes achieved. Self-evaluation by partners will be an ongoing process.

11.0 CONSULTATION

11.1 Consultation has taken place with the Chief Executive, Depute Chief Executives (Finance and Support Services), the Heads of all Dundee City Council Departments and the partner agencies involved in the Dundee Community Learning Partnership, including representatives from Dundee College, Careers Scotland, the Universities of Dundee and Abertay, the voluntary sector and the Chamber of Commerce.

12.0 BACKGROUND PAPERS

12.1 The following background papers were relied upon in the preparation of this Report.

Working Together and Learning Together To Build Stronger Communities (Scottish Executive 2004)
Dundee Community Learning and Development Strategy

Signed: Stewart Murdoch
Director of Leisure & Communities Department Date: 14 October 2005

Development Priorities

Learning for Adults

- Provide job search facilities in St. Mary's in addition to Kirkton and Ardler along with adult learning provision to enhance employment skills.
- Promote Internet access and the opportunities for learning.
- Set up designated health information areas in Ardler and Kirkton.
- Deliver personal and social development and other family support skills.
- Develop appropriate approaches to engage the entire community.
- Develop and deliver community based adult learning opportunities with key partners.
- Deliver literacy, numeracy and first qualifications.
- Deliver community based adult guidance.
- Facilitate volunteer and work experience placements through the Countryside Ranger Service.
- Run an annual programme of events and activities suitable for adults at the Wildlife Centre and Camperdown Country Park.
- Produce Information and promote opportunities for physical activities.
- Produce social and leisure activities for older people in sheltered lounges locally.

Learning for Young People

- Promote engagement in the development of community facilities and resources for young people and families.
- Ensure young people have the opportunity to have a say in decision making structures and processes.
- Work together to create a safe environment for young people.
- Provide dedicated jobshop facilities for young people and learning opportunities to enhance employment skills.
- Widen access to information on services around healthy lifestyle choices.
- Promote the development of life skills and the setting of goals with young people.

Capacity Building

- Support the local Community Regeneration Forum to develop its role in connecting with the wider community, and developing tailor made support for projects, groups and individuals.
- Build community capacity in the development of the St. Mary's Community Facility.
- Involve the community in the Templeton Woods Arts Strategy led by the Countryside Ranger service. Local people will participate in the creation of public art works for installation in the woods.
- Support local people in the development of the Ardler Café and provide accredited and non-accredited training opportunities for all staff and volunteers.
- Support the Kirkton Partnership to become a recognised Neighbourhood Representative Structure.
- Support local groups to manage community events and festivals.
- Develop credit union collection points in St. Mary's through volunteer development.
- Facilitate voluntary sector capacity building with local centre management committees and voluntary projects.
- Develop health issue work in the community supported by Dundee Healthy Living Initiative and the Public Health Network. Develop and deliver the accredited "Health Issues In The Community" Course with local people and identified workers.
- Ensure each library offers volunteering opportunities in appropriate aspects of service delivery.
- Provide environmental education for all ages and promote participation in park activities through the Countryside Ranger Service and the Wildlife Centre.
- Support the local voluntary management groups of Ardler Complex and Kirkton Community Centre in providing a well balanced programme of social, leisure and learning activities.



The Dundee Community Learning Strategy Group was formed to bring together partner agencies from the Dundee Partnership, with a stake in the Community Learning and Development field, to co-operate in developing Community Learning responses to issues raised by local communities with respect to their learning needs.

Central to the city-wide strategy, is the need to create local partnerships that embrace the diversity and commitment of stakeholders in different neighbourhoods. The Action Plan described in this leaflet is the first stage in establishing the connection between strategy and local provision.

Stewart Murdoch
Chair Dundee Community Learning strategy Group

The Community Learning & Development Action Plan has been prepared by Dundee City Council Leisure and Communities Department on behalf of the Community Learning & Development Partnership. You will be able to access the full working document for this Action Plan on the Dundee Partnership website at www.dundeepartnership.co.uk. For details of how you can get involved contact:

Billy Gartley, Communities Officer
Leisure & Communities Department
Ardler Complex, Turnberry Avenue
Dundee DD2 3TP
Tel: 01382 436363
Email: billy.gartley@dundeecity.gov.uk



If you have difficulty understanding English please contact the address below:

ইংরেজী বুঝতে অসুবিধা হলে অনুগ্রহ করে নীচের ঠিকানায় যোগাযোগ করুন।

如果閣下對英語不十分明白，請與以下地址聯絡：

नेवत उवाठुं ईवालि मत्रामा वि चमभइत वि चवठि ठाही वुंसी वै उं रि पा वरवे वेठां दि उे वेटेउे उे संपवव वरवे:

اگر آپ کو انگریزی سمجھنے میں مشکل پیش آتی ہے تو براہ کرم نیچے دیئے گئے پتے پر رابطہ کریں۔

Dundee Translation & Interpretation Service,
Central Library, The Wellgate, Dundee DD1 1DB
Tel 01382 431563/431542
Email: translation@dundeecity.gov.uk

Dundee North West

COMMUNITY LEARNING AND DEVELOPMENT ACTION PLAN

2005 - 2008

Ardler
Kirkton
St. Mary's
Camperdown/
Clatto



The Community Learning and Development Action Plan builds on the Local Community Planning Process.

We have looked at the Community's priorities as identified by the Community Planning Process and developed learning responses to those issues.

Our overview of Community Learning and Development work locally, combined with our current knowledge of community views on needs, aspirations and priorities, has allowed us to generate a Local Learning Action Plan for the next three years

This plan will support and develop local activities designed to address community priorities.

This summary leaflet describes how Community Learning and Development is currently delivered in the North West of Dundee and outlines some of priorities for future action as identified in the Local Community Plan.

DUNDEE NORTH WEST

The Northwest Community Learning and Development area consists of Ardlar, Kirkton, St. Mary's, and Camperdown and Clatto Country Parks. The area includes five local council wards. It is bordered by the Kingsway to the south, Old Glamis Road to the east and the city boundaries to the north and west. There is a variety of housing and the area also includes one of the five city Community Regeneration cluster areas.

Kirkton was originally designed as a single tenure housing estate. The oldest part of the area was built in the 1950s and consists of semi-detached, terraced and tenement properties. Today there is a growth in demand for public sector housing in the area and a significant move towards home ownership. More than half of the homes in Kirkton are owner occupied and a steady programme of investment by private house-builders is gradually reshaping the profile of the area.

The St Mary's housing estate was built in the 1940's. It has recently acquired Community Regeneration status.

Ardlar is a Greenfield housing estate built between 1965 and 1974. Ardlar was planned to have a high density population as it was felt this would promote neighbourliness. The estate was single tenure, city council rented accommodation. It is currently undergoing a seven year regeneration programme consisting of demolition and rebuild and which started in January 2000.

The Camperdown and Clatto areas are to the west of the area and have a number of leisure facilities such as Camperdown Country Park which includes provision of visitor services in Templeton, Clatto and Camperdown. Car parking, toilets and picnic areas and children's play equipment at Camperdown and Clatto, Camperdown House, Golf course, Wildlife Centre and Adventure Playground.

In Camperdown and Clatto Country Parks a cycling centre with access for disabled users is being developed and a core path network for network for Camperdown, Templeton Wood and Clatto is being identified. Other facilities include Downfield Golf course, Clatto Country Park, Templeton Woods, Dundee Ice Arena, Multi screen cinema, Fast food outlets and a hotel.

National Priorities For Community Learning And Development

Achievement through Learning For Adults

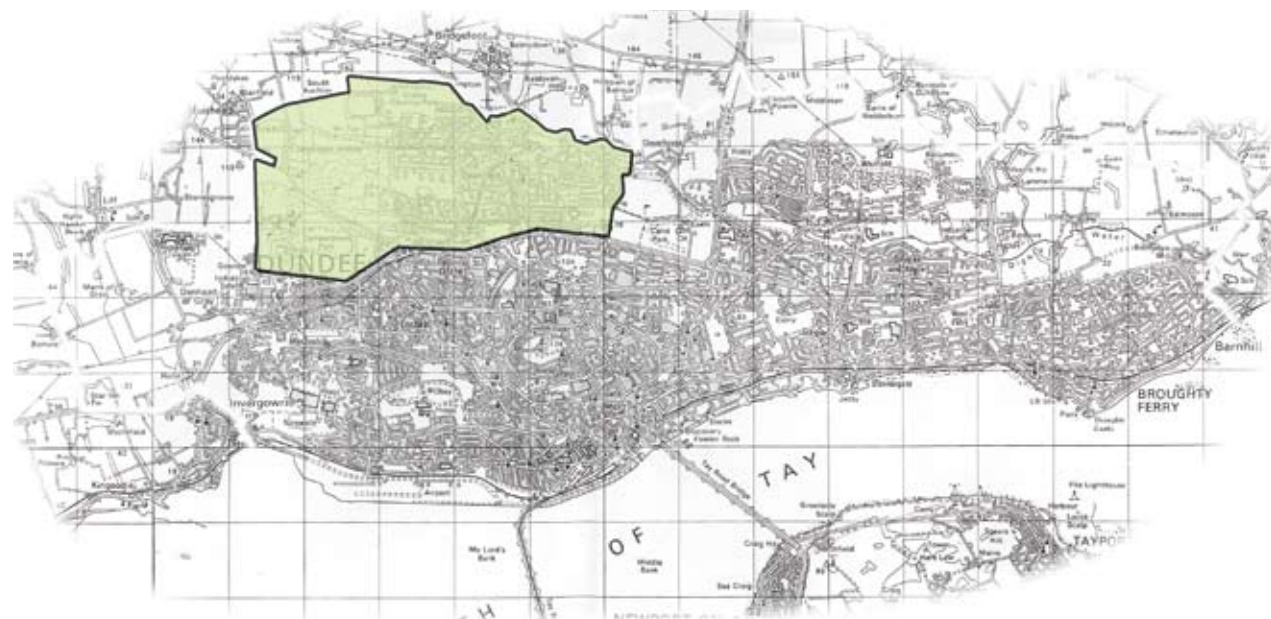
Improving the opportunities for adults to participate in lifelong learning activities especially the development of core literacy and numeracy skills as well as new areas such as information technology and communications.

Achievement through Learning for Young People

Engaging with young people to support their personal, social and educational development. To create opportunities for young people to develop into active citizens.

Achievement through Building Community Capacity

Building Community Capacity involves supporting groups and individuals to develop the skills and confidence to influence what goes on in their own community whether it be influencing decision making on local services or managing local facilities.



Community Learning And Development Provision in Dundee North West

Learning for Adults

A number of organisations provide guidance, counselling, advice and learning support across the northwest area. These include Learning Around Project, Community Capacity Project, Dundee Employment and Aftercare Project, Dundee Healthy Living Initiative, Dundee City Council and Careers Scotland.

Learning Activities are delivered from a variety of venues including Ardlar Complex, Kirkton Community Centre, Ardlar and Kirkton Libraries, local churches, Kirkton Community Support and local schools. There are plans to develop venues in the St. Mary's area to accommodate this activity at a level that goes further to meet local needs.

The Ardlar Village Trust runs a number of community learning and engagement type projects through Physical, Social and Economic Sub-Groups.

Learning for Young People

Much of the opportunities for learning for young people are delivered from the same venues across the northwest of the city as described above.

Citywide initiatives also have an input in the area include Xplore, Youth Sports Development Team, and Dundee City Council. As well as learning for the wider youth population, there is also specific input to help address issues of exclusion due to offending behaviour, learning or behavioural difficulties or low self-confidence and self-esteem. Dundee City Council Leisure and Communities Department has a local team of full and part-time youth work staff who are responsible for the development and delivery of youth work opportunities for young people aged 12-18 years. This team also delivers sessions for children aged 5-12 years in a variety of clubs and settings.

Uniformed youth organisations provide opportunities for young people across sports, arts and crafts, and outdoor activities and encourage individual development.

As part of the Integrated Community School development, Dundee City Council Education department has 2 pupil support workers based in each secondary school responsible for the delivery of youth work activities in a school context.



Youth Sport Development Officers actively recruit local volunteers and support their development as coaches or officials.

The Ardlar Kirkton St. Mary's Youth Strategy can help fund locally identified initiatives responding to the needs of local young people.

Capacity Building

The Community Regeneration Forum in the northwest covers the cluster area of Ardlar, Kirkton and St. Mary's. The forum has 15 local representatives who collectively help respond to local regeneration needs in terms of support and funding. The local forum also has input from Dundee City Council, the Neighbourhood Partnership Network and the Voluntary Sector.

The Ardlar Village Trust has neighbourhood representative structure status and provides a way of ensuring that local needs and issues are raised in an interface with local partners.

In St. Mary's the main group representing the voice of the community is St. Mary's Association of Residents and Tenants. Presently the main focus of this group is to support the development of a dedicated community facility for St. Mary's. This would allow community learning and development activity to take place in the vicinity on a permanent basis. The Kirkton Partnership has recently become a fully constituted groups and it is hoped that this group can take on the role of the neighbourhood representative structure in the near future.

These groups receive support from Dundee City Council chiefly through the Leisure and Communities and Housing Departments. Capacity building across the area is largely supported by the local community regeneration team. Community safety groups are established in the area and operate in different ways, but all give a voice to issues of community safety locally.

There are a considerable number of community and voluntary groups across the northwest of the city, from the work of local management groups in the community centres to the variety of voluntary and community groups and organisations, all ably demonstrating the amount of social capital that exists.

Development Priorities

Learning for Adults

- Making use of different settings it is hoped to develop and deliver a wide variety of community learning activities, some of which may involve working in partnership with Dundee College and the University of Dundee.
- It is envisaged that there will be an increase in numbers of adults undertaking training in Information Technology in community neighbourhood libraries and centres.
- Different agencies within the west area will continue to offer opportunities for adults to extend their personal and social development as well as family support skills.
- Adults will benefit from opportunities to enhance their skills to help them seek employment.
- Special efforts will be made to engage with groups or individuals who are traditionally hard to reach e.g. Peer Education approaches. In order to ensure that as many adults can take advantage of the learning opportunities on offer it is expected that childcare support will be available if required.
- Adults will have access to literacy, numeracy and first qualifications.
- Community based adult guidance will be provided in the Dundee West Area.
- Social and leisure events will be developed for older people in sheltered housing accommodation.
- Information about opportunities for physical activity will be produced and promoted.

Learning for Young People

- Young People will have equal access to co-ordinated support and information services. This may be done by developing partnership opportunities for agencies in the area.
- Using a variety of community settings, it is hoped to raise awareness of, and access to, career planning for young people.
- Assistance will be available for young people to help them plan their finances more carefully.

- Young people should be given greater access to information and services so that they can make healthy lifestyle choices, including mental health ones.
- Young people should be supported to take up volunteering opportunities.
- All sectors of the community should be encouraged to work together to create a safe environment for young people.
- Young people and families will be encouraged to engage with community libraries.
- Young people will be given opportunities to have a say in decision-making structures and processes.

Capacity Building

- Local community groups should be supported to manage community events, festivals and gala days.
- The Local Community Regeneration Forum should be supported in its work and within its role in connecting with the wider community.
- Local Centre management groups will be linked to the Community and Voluntary Alliance for training and development purposes.
- Local community groups will be encouraged to link their work with strategic plans for their areas.
- Community Libraries will encourage local volunteers to become involved in appropriate aspects of service delivery.
- More local people will be encouraged to play their part in community life.
- Community participation in park activities will be promoted.



The Dundee Community Learning Strategy Group was formed to bring together partner agencies from the Dundee Partnership, with a stake in the Community Learning and Development field, to co-operate in developing Community Learning responses to issues raised by local communities with respect to their learning needs.

Central to the city-wide, strategy is the need to create local partnerships that embrace the diversity and commitment of stakeholders in different neighbourhoods. The Action Plan described in this leaflet is the first stage in establishing the connection between strategy and local provision.

Stewart Murdoch
Chair Dundee Community Learning strategy Group

The Community Learning & Development Action Plan has been prepared by Dundee City Council Leisure and Communities Department on behalf of the Community Learning & Development Partnership. You will be able to access the full working document for this Action Plan on the Dundee Partnership website at www.dundeepartnership.co.uk. For details of how you can get involved contact:

Martin McKay, Communities Officer
Leisure & Communities Department
Lochee Community Office (Above Library), 47 High Street, Lochee,
Dundee DD2 3AU
Tel: 01382 431839
E-mail: martin.mckay@dundeecity.gov.uk



If you have difficulty understanding English please contact the address below:

ইংরেজী বুঝতে অসুবিধা হলে অনুগ্রহ করে নীচের ঠিকানায় যোগাযোগ করুন।

如果閣下對英語不十分明白，請與以下地址聯絡：

नेवर उवातुं ईगलि मन्ना वि समस्त वि चरि ठापी वुंसी वै उं रि पावरवे वेठां दि उे वुंएउे संपत्त वरै:

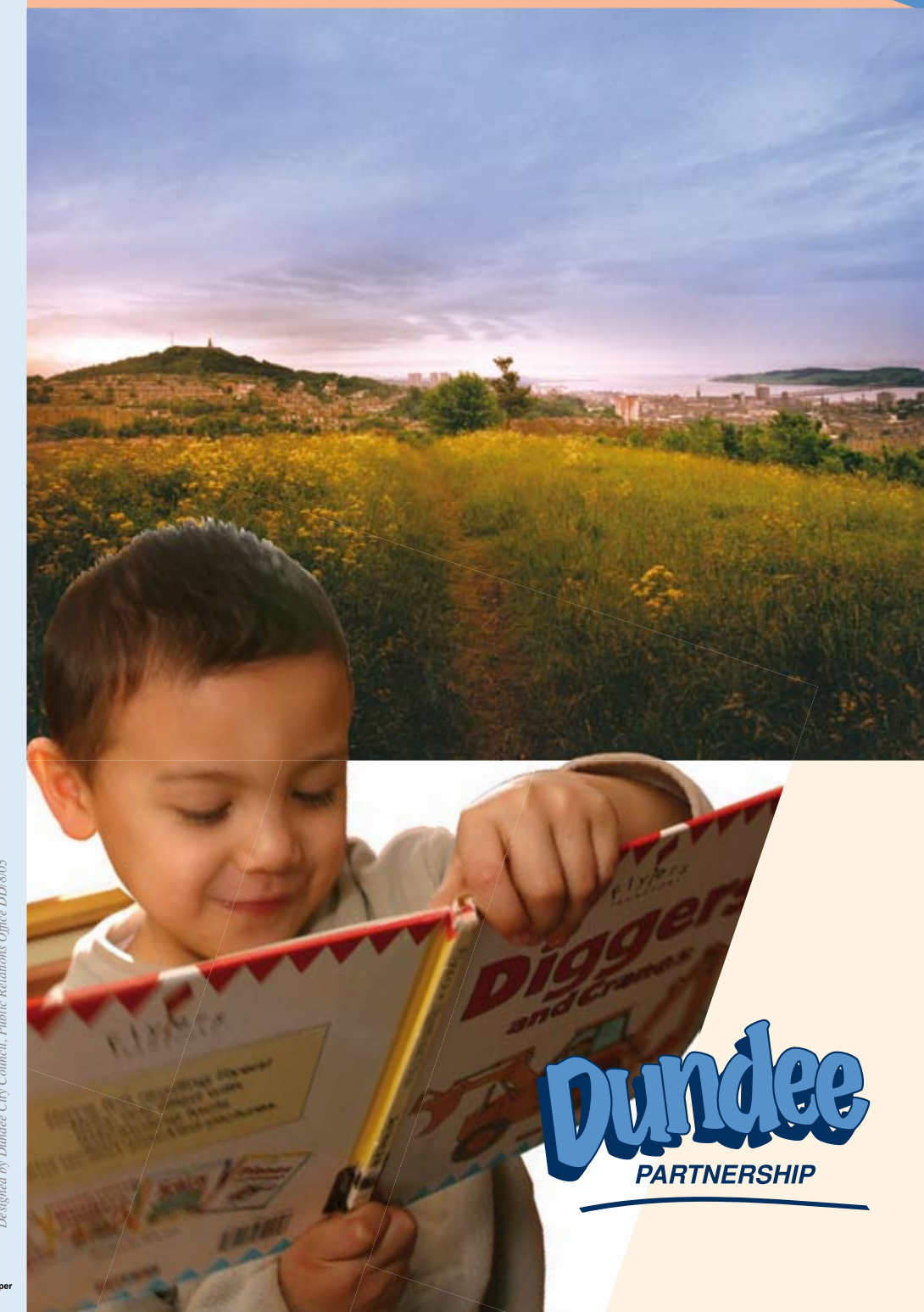
اگر آپ کو انگریزی سمجھنے میں مشکل پیش آتی ہے تو برائے کرم نیچے دیئے گئے پتے پر رابطہ کریں۔

Dundee Translation & Interpretation Service,
Central Library, The Wellgate, Dundee DD1 1DB
Tel 01382 431563/431542
Email: translation@dundeecity.gov.uk

Dundee West

Lochee
Charleston
Menzieshill

COMMUNITY LEARNING AND
DEVELOPMENT ACTION PLAN
2005 - 2008



The Community Learning and Development Action Plan builds on the Local Community Planning Process.

We have looked at the Community's priorities as identified by the Community Planning Process and developed learning responses to those issues.

Our overview of Community Learning and Development work locally, combined with our current knowledge of community views on needs, aspirations and priorities, has allowed us to generate a Local Learning Action Plan for the next three years

This plan will support and develop local activities designed to address community priorities

This summary leaflet describes how Community Learning and Development is currently delivered in Dundee West and outlines some of the priorities for future action as identified in the Local Community Plan.

DUNDEE WEST

The Dundee West Area is made up of the council wards of Lochee East and West, as well as Balgay, Camperdown and Ninewells. The area has a population of approximately 24,000. At its southern end there are the communities of Ninewells, Balgay and Pentland. Travelling east you then take in the communities of Whorterbank and The Glens. To the north are Dryburgh and Charleston. Travelling west takes in Denhead of Gray and Liff Hospital and further west comprises Gowrie Park and Menzieshill. Other communities contained within Dundee West area include Beechwood, Clement Park, Foggyley and Pitalpin and of course Lochee itself.

All of these communities vary in size, whether it is in population numbers or geographic. They are all different and we try to serve their community learning and development needs recognising these differences. However, most of the facilities available to provide services for the area are situated in Menzieshill, Charleston or Lochee.



National Priorities For Community Learning And Development

Achievement through Learning For Adults

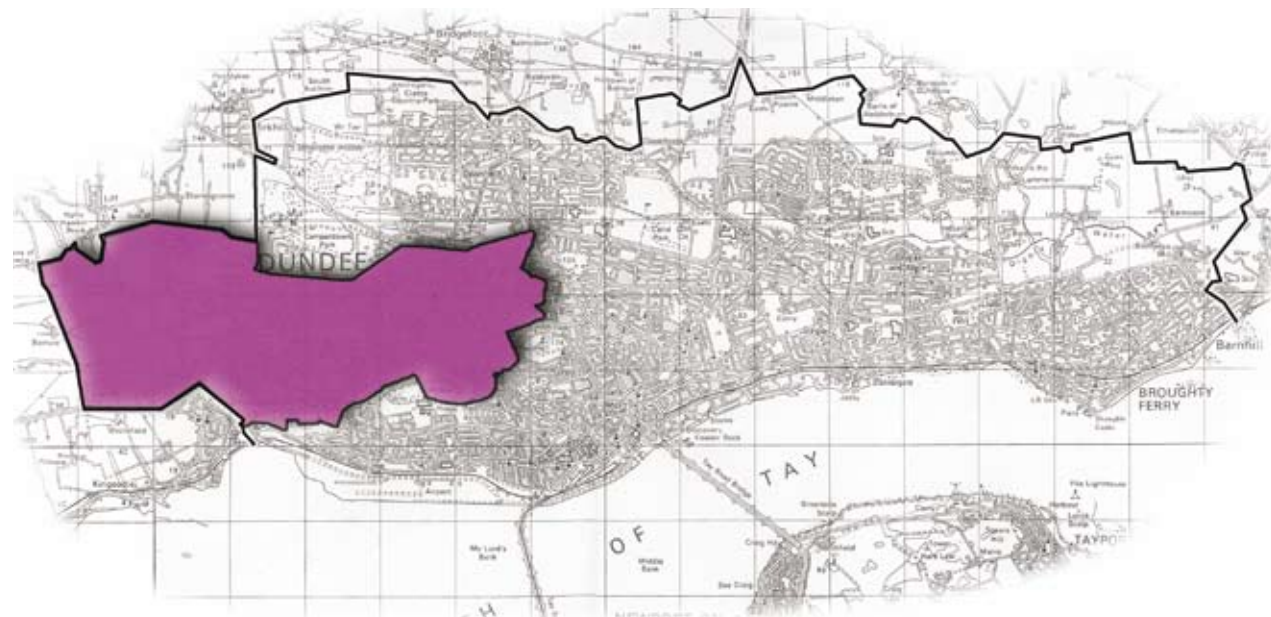
Improving the opportunities for adults to participate in lifelong learning activities especially the development of core literacy and numeracy skills as well as new areas such as ITC and communications.

Achievement through Learning for Young People

Engaging with young people to support their personal, social and educational development. To create opportunities for young people to develop into rounded citizens.

Achievement through Building Community Capacity

Building Community Capacity involves supporting both groups and individuals to develop the skills and confidence to influence what goes on in their own community whether it be influencing decision making on local services or managing local facilities.



© Crown copyright. All rights reserved.
Dundee City Council Licence No. 100023371. 2005

Community Learning and Development in Dundee West

Learning for Adults

A number of organisations from a variety of agencies provide counselling and guidance as well as direct provision in the west area. Included in this list are Learning Around Project, Careers Scotland, Dundee Employment and Aftercare Project and Dundee City Council.

In addition Dundee College and the University of Dundee provide adult education classes, in partnership with colleagues from Dundee City Council. Venues used at present include, Charleston Neighbourhood Centre, Lochee Library and Menzieshill Community Centre and Library. Smaller scale venues include Sheltered Housing Lounges or Communal Lounges attached to multi-storey blocks, Churches and Schools are also used.

Learning for Young People

Youth Work is delivered to young people by a variety of organisations in a wide variety of venues some of which are mentioned above. Dundee City Council Leisure and Communities Department employs a number of full and part time staff who work in club settings or in street work situations. In the main they work with young people in the 12 -18 age range.

The department recruits volunteers to work with children aged between 5 and 11 and there are paid staff who co-ordinate the work of the volunteers. Most of the uniformed youth organisations operate in the west area and the City Council also employs Sports Development Officers who target particular age groups for particular activities.

As part of the Integrated Community School development, Dundee City Council Education Department has 2 pupil support workers based in each secondary school responsible for the delivery of youth work activities, either taking place on the school campus or with young people and families within the school community.

There are other citywide agencies who work with individual young people from the West Area.



Capacity Building

Capacity Building is provided for local individuals and community groups by the Leisure and Communities Department and other local authority staff from the Housing and Social Work Department. The one Community Council in the area is Kingsway West. It is hoped that a Community Council will be established for Lochee soon.

There is a Community Regeneration Forum, which covers part of Menzieshill, Charleston, Lochee and Beechwood. This has 15 locally elected representatives who meet monthly with representatives from the Neighbourhood Partnership Network, the Voluntary Sector and elected members of Dundee City Council. They make recommendations about allocating finance in response to community identified needs. Many of the local tenant and residents groups in the area form the umbrella group Dundee West Community Safety Group.



Development Priorities

Learning for Adults

- Anti-social behaviour in tenement properties will be targeted through a programme of information & education.
- Social events and leisure activities for older people will be developed in sheltered lounges and local churches.
- Opportunities for community learning will be a central feature of the proposed Al Mahktoum Cultural Centre planned to locate in the Blackness area.
- Information on a range of public health topics such as drugs and alcohol misuse, sexual health issues and mental well being will be produced and promoted through local groups and organisations.
- A more strategic approach will be made to developing adult learning activities in the area. Audits will be made of local provision and new opportunities for community group training will be created.
- Collaborative work will be developed between agencies to create new learning opportunities locally.
- Information on opportunities for physical activities will be produced and promoted.
- Healthy eating and weight management opportunities will be created. Smoking cessation groups will be started and supported.
- Vulnerable groups such as elderly, ethnic minorities and the chronically ill will be the focus of better organised delivery of health promotion materials.
- Opportunities will be created to enhance literacy and numeracy skills including provision for those taking first qualifications.

Learning for Young People

- A Youth Work Strategy group will be established to develop additional provision and facilities for young people.
- Road Safety awareness sessions will be delivered in local schools.
- An education and awareness campaign aimed at increasing recycling in the area will be delivered. Young people in particular will be targeted.
- Information on a range of health topics specifically affecting young people such as drugs and alcohol misuse, sexual health issues and mental well being will be produced and promoted through local groups and organisations.
- In the interest of promoting healthy eating in young people, Breakfast Clubs may be established as appropriate.
- Opportunities will be created for young people to contribute towards the Community Planning process in their own neighbourhoods.

Capacity Building

- The Leisure and Communities Department will work with local groups to promote participation in park activities.
- Opportunities for involvement in Community Safety activities will be developed.
- Opportunities will be created for residents to contribute towards the community planning process in their neighbourhood.
- Community input to the proposed Media Park will be encouraged to ensure resident satisfaction with the developments.
- Education and awareness campaigns will target litter and illegal dumping. Graffiti removal kits will be distributed to community groups
- The cultural diversity of the West area will be enhanced by events designed to celebrate the rich economy of art, music and food enjoyed by the community.
- Training needs of community organisations will be identified and appropriate learning opportunities will be devised in response to these needs.
- The Volunteer Centre, Dundee will promote the benefits of volunteering locally.
- Mechanisms will be introduced to attract additional funding into the area to develop local community led activities.



The Dundee Community Learning Strategy Group was formed to bring together partner agencies from the Dundee Partnership, with a stake in the Community Learning and Development field, to co-operate in developing Community Learning responses to issues raised by local communities with respect to their learning needs.

Central to the city-wide strategy, is the need to create local partnerships that embrace the diversity and commitment of stakeholders in different neighbourhoods. The Action Plan described in this leaflet is the first stage in establishing the connection between strategy and local provision.

Stewart Murdoch

Chair Dundee Community Learning strategy Group

The Community Learning & Development Action Plan has been prepared by Dundee City Council Leisure and Communities Department on behalf of the Community Learning & Development Partnership. You will be able to access the full working document for this Action Plan on the Dundee Partnership website at www.dundeepartnership.co.uk. For details of how you can get involved contact:

The Communities Officer,
Leisure & Communities Department
Mitchell Street Centre
Mitchell Street, Dundee
Tel: 01382 435803



If you have difficulty understanding English please contact the address below:

ইংরেজী বুঝতে অসুবিধা হলে অনুগ্রহ করে নীচের ঠিকানায় যোগাযোগ করুন।

如果閣下對英語不十分明白，請與以下地址聯絡：

ਜੇਕਰ ਤੁਹਾਨੂੰ ਇੰਗਲਿਸ਼ ਸ਼ਬਾਦਾਂ ਵਿੱਚ ਸਮਝਣ ਵਿੱਚ ਕੋਈ ਠੀਕੀ ਠੀਕੀ ਹੈ ਤਾਂ ਪਿੱਛਾ ਪਾ ਕਰਕੇ ਹੇਠਾਂ ਦਿੱਤੇ ਹੋਏ ਠੀਕੀ ਸੰਪਰਕ ਕਰੋ:

اگر آپ کو انگریزی سمجھنے میں مشکل پیش آتی ہے تو براہ کرم نیچے دیئے گئے پتے پر رابطہ کریں۔

Dundee Translation & Interpretation Service,
Central Library, The Wellgate, Dundee DD1 1DB
Tel 01382 431563/431542
Email: translation@dundeecity.gov.uk

Dundee South West

The West End
Perth Road & Logie
Blackness Areas

COMMUNITY LEARNING AND DEVELOPMENT ACTION PLAN

2005 - 2008



The Community Learning and Development Action Plan builds on the Local Community Planning Process.

We have looked at the Community's priorities as identified by the Community Planning Process and developed learning responses to those issues.

Our overview of Community Learning and Development work locally, combined with our current knowledge of community views on needs, aspirations and priorities, has allowed us to generate a Local Learning Action Plan for the next three years

This plan will support and develop local activities designed to address community priorities

This summary leaflet describes how Community Learning and Development is currently delivered in The West End and outlines some of priorities for future action as identified in the Local Community Plan.

DUNDEE SOUTH WEST

The Dundee South West decentralisation area includes the Dundee City Council Wards of Riverside, Tay Bridges & Logie.

The area can also be described in geographical terms as The West End, The Perth Road Corridor and the Logie/Blackness Area.

The West End is the predominantly residential area to the west of Sinderins.

The Perth Road Corridor includes the Nethergate, the University precincts, the Perth Road shopping area and the Magdalene Green residential area.

Logie & Blackness are two neighbourhoods that lie to the north of the Hawkhill bypass and include a mixture of light industrial and residential zones.



National Priorities for Community Learning and Development

Achievement through Learning For Adults

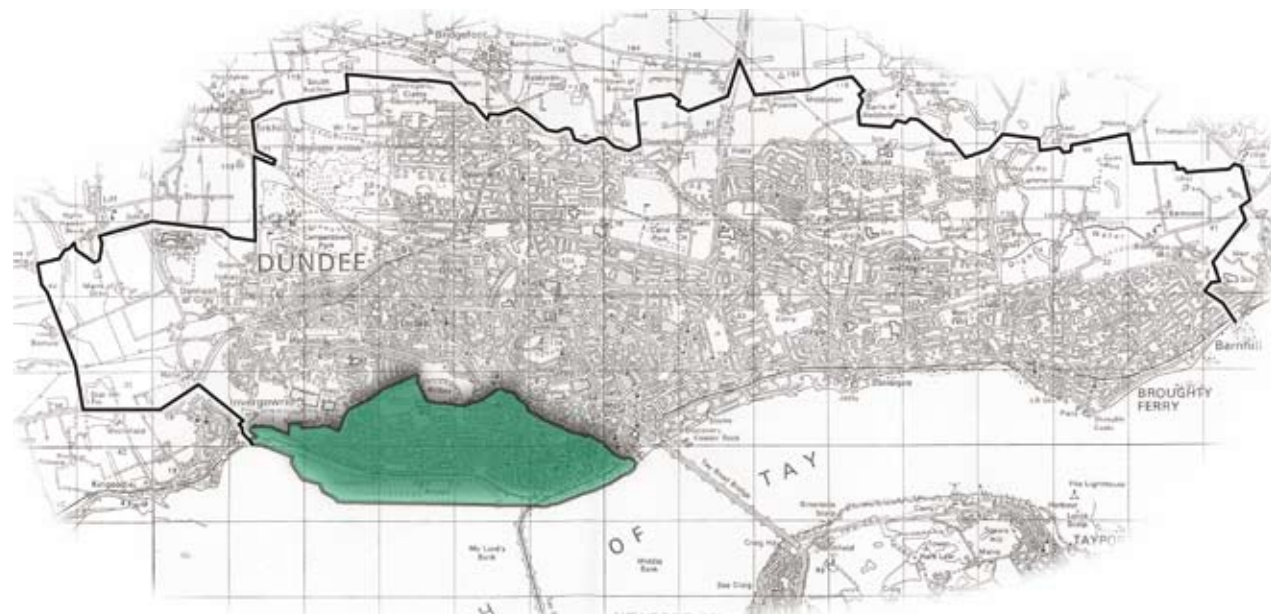
Improving the opportunities for adults to participate in lifelong learning activities especially the development of core literacy and numeracy skills as well as new areas such as Information Technology and communications.

Achievement through Learning for Young People

Engaging with young people to support their personal, social and educational development. To create opportunities for young people to develop into active citizens.

Achievement through Building Community Capacity

Building Community Capacity involves supporting both groups and individuals to develop the skills and confidence to influence what goes on in their own community whether it be influencing decision making on local services or managing local facilities.



© Crown copyright. All rights reserved.
Dundee City Council Licence No. 100023371. 2005

Community Learning and Development in Dundee South West

Learning for Adults

Community Learning for adults is provided by a broad cross section of agencies in Dundee's West End. Ranging from major academic institutions to small voluntary providers. There appears at first sight to be a wealth of learning opportunities available.

While this is, in fact, the case it should be borne in mind that the Universities also cater for a market far beyond the local community.

In terms of meeting local needs, the vast majority of activities are run by local people using churches, schools and other community buildings. Good examples of this are the Harris Education and Recreation Association and the informal "partnerships" which have been developed by Dundee City Council Communities Department, the voluntary sector and local groups to deliver specific courses such as Healthy Eating and Tai Chi.

Other providers such as the Al Maktoum Institute cater for a specific market concerned with Muslim academic studies.

Learning for Young People

Services for young people are, in the main, provided by the voluntary sector. Traditional youth organisations such as Guides and Brownies are active in a number of Churches. Other Churches provide services such as youth and activity clubs.

Engagement with young people is undertaken by staff from the Dundee City Councils Leisure and Communities Department within schools, based at Blackness Library or in other community settings.

Younger children are catered for by Out of School Clubs at several schools and activity groups based in churches and Blackness Library.

Away from the focus on recreational learning, partner agencies such as Tayside Police provide training on road safety and the City Council's Waste Awareness Team work with young people on re-cycling and environmental awareness programmes.

Capacity Building

Community groups are central to the provision of community learning in the West End.

This area has supported a Community Council since the structure was introduced in 1975.

The West End Community Council is a pivotal force in bringing the community and agencies together to address local issues. Topical concerns such as residential car parking and other problems associated with tenemental living have been the focus of attention in recent times. The Community Council is a member of the Community & Neighbourhood Representative Structures Network and in that respect contributes to the city-wide agenda. Members also take part in training opportunities.

There are also several Tenants and Residents groups active in the area and these are supported by officers from Dundee City Councils Housing Department.

Dundee City Council Leisure and Communities recently established a liaison group with local residents to encourage local involvement in the management of parks facilities.



Development Priorities

Adult Learning

- Establish closer working relationships between adult learning providers, mental health groups and support agencies, to ensure increased uptake of provision.
- Recognise and support the vital role the voluntary sector plays as a provider of community learning opportunities.
- Facilitate collaboration between all partners to develop relevant adult learning programmes and produce coherent marketing and publicity materials about local adult learning opportunities.
- Increase opportunities for adults and their children/grandchildren to learn together through the development of family learning initiatives.
- Deliver literacy, numeracy and first qualifications.
- Where appropriate ensure that adult learning programmes include opportunities to address community issues.
- Develop a partnership approach to the delivery of adult guidance.
- Support the creation of more good quality volunteer opportunities, building on the recent Hilltown research project.
- Explore with organisations representing deaf people how communication support can be provided to allow people to access local provision.
- Provide childcare and carers support to allow people to access adult learning opportunities.
- Increase the range of social and leisure activities available to older people in sheltered lounges.
- Work in partnership with agencies to deliver opportunities to learn English for speakers of other languages.

Young people

- Increase the opportunities for young people to participate in local community planning and local decision making structures.
- Pro-actively engage with young people from minority - ethnic groups and those with disabilities.
- Consult with young people in the Mitchell Street area to identify what new developments are required.
- Explore ways of helping more young people to access Information Technology outwith school hours.

- Engage employment and training agencies in youth work provision to encourage hard to reach young people to make use of these services.
- Continue to use sport activity as a method to engage young people.
- Establish a Youth Strategy for the area ensuring co-ordination between youth work organisations.
- Bring providers together to look at expanding the range of children's work.

Community Capacity

- Support the development of new neighbourhood representative structures and Tenant/Resident Associations.
- Provide communities with clear information about local services, projects and initiatives.
- Provide opportunities for community stakeholders to identify local priorities.
- Support local people to address community safety priorities arising out of local community plans.
- Explore the use of Scottish Executive Futurebuilders funding to develop social enterprises to respond to local needs.
- Support people to contribute directly to the running of Centres & Projects through their involvement in local Management Groups.
- Recognise and celebrate community achievement.
- Share and develop effective practice in the production of community newsletters and multi-media initiatives.
- Develop and co-ordinate training and skills development programme across the community sector.
- Involve a range of stakeholders in the feasibility study to identify how Arthurstone Library can be developed as a key community facility in Stobswell.



The Dundee Community Learning Strategy Group was formed to bring together partner agencies from the Dundee Partnership, with a stake in the Community Learning and Development field, to co-operate in developing Community Learning responses to issues raised by local communities with respect to their learning needs.

Central to the city-wide strategy, is the need to create local partnerships that embrace the diversity and commitment of stakeholders in different neighbourhoods. The Action Plan described in this leaflet is the first stage in establishing the connection between strategy and local provision.

Stewart Murdoch

Chair Dundee Community Learning strategy Group

The Community Learning & Development Action Plan has been prepared by Dundee City Council Leisure and Communities Department on behalf of the Community Learning & Development Partnership. You will be able to access the full working document for this Action Plan on the Dundee Partnership website at www.dundeepartnership.co.uk. For details of how you can get involved contact:

Andy Moir,
Arthurstone Community Library,
Leisure & Communities Department,
Arthurstone Terrace, Dundee DD4 6RT
Tel: 01382 438893
Email: andy.moir@dundeecity.gov.uk



If you have difficulty understanding English please contact the address below:

ইংরেজী বুঝতে অসুবিধা হলে অনুগ্রহ করে নীচের ঠিকানায় যোগাযোগ করুন।

如果閣下對英語不十分明白，請與以下地址聯絡：

नेवर उग्रतुं ईगलि मन्ना वि चममस्त वि च बठि ठाई वृंसी वै उं लि पा वरवे वेठां दि उे वृष्टे उे संपत्त वः

اگر آپ کو انگریزی سمجھنے میں مشکل پیش آتی ہے تو برائے کرم نیچے دیئے گئے پتے پر رابطہ کریں۔

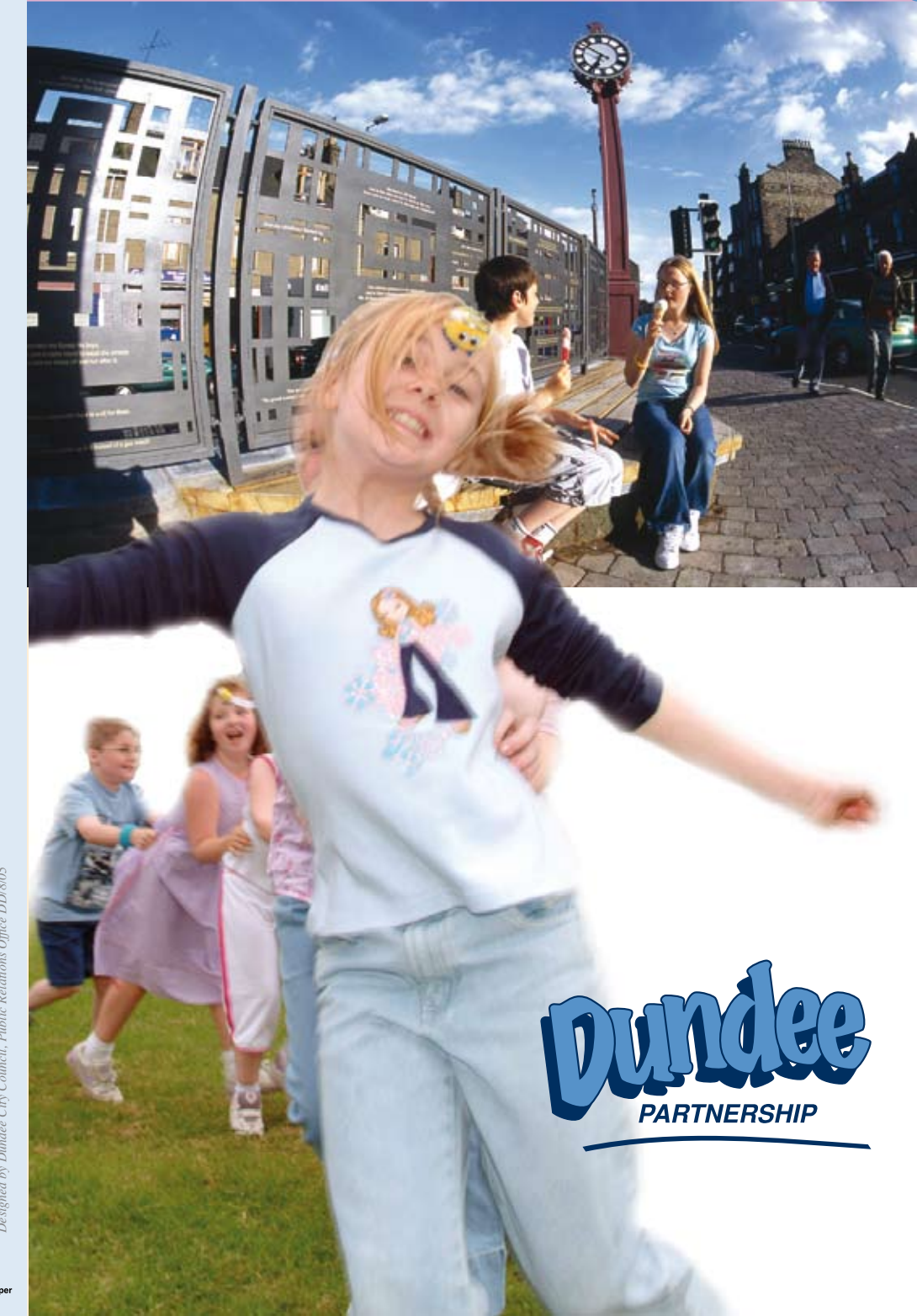
Dundee Translation & Interpretation Service,
Central Library, The Wellgate, Dundee DD1 1DB
Tel 01382 431563/431542
Email: translation@dundeecity.gov.uk

Dundee Central

Stobswell
Hilltown
City Centre
Fairmuir
Law

COMMUNITY LEARNING AND
DEVELOPMENT ACTION PLAN

2005 - 2008



The Central Community Learning and Development Action Plan has been shaped by 3 key developments.

Firstly, the local Community Planning process raised a number of key concerns that people wanted to see addressed.

Secondly, HM Inspectorate of Education published a report in April 2005 which stated that the "Provision for Community Learning and Development in Central Dundee was very good with some exceptional elements". However they also identified areas that needed more work

Thirdly, 110 groups and agencies in the area each produced a specially designed poster to highlight their contribution to Community Learning. All the posters were displayed at a well attended exhibition at the DCA. The posters will now be taken round community venues in the area to allow as many people as possible to see what is on offer and highlight any gaps in provision.

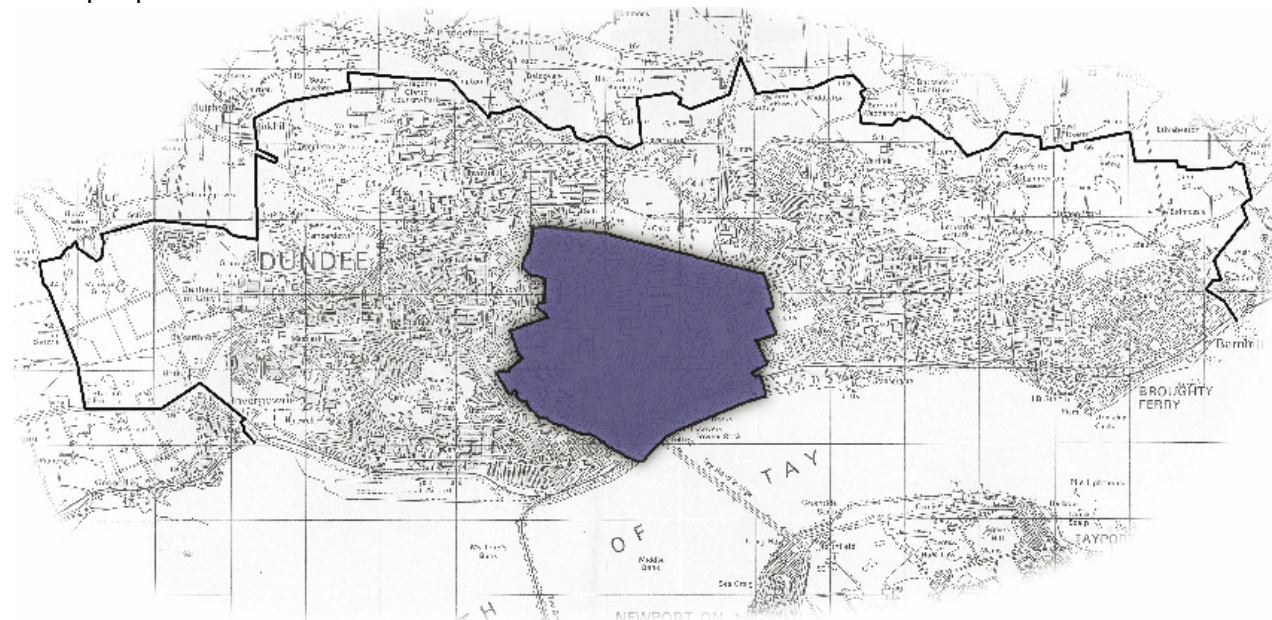
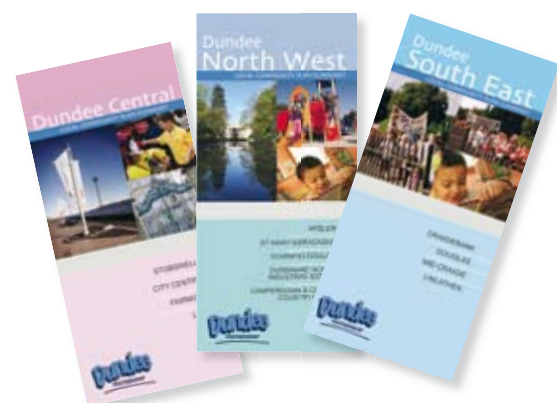
The posters have now been transferred onto a DVD to produce an accessible community directory of "What's On In Pictures in the Central Area".

Using all the information we have now produced this action plan which identifies the key priorities for the next 3 years.

DUNDEE CENTRAL

The Central Area is bounded by the Tay to the South, City Road to the West and the Kingsway/Old Craigie Road to the North and East.

The area has a large population of approximately 35000 people. The land use is mixed comprising a wide range of housing types and tenures including high-rise blocks, tenemented flats and houses. There is also a range of industry, retail and leisure use. In addition there are educational and community facilities.



© Crown copyright. All rights reserved.
Dundee City Council Licence No. 100023371. 2005



National Priorities For Community Learning And Development

Achievement through Learning For Adults

Improving the opportunities for adults to participate in lifelong learning activities especially the development of core literacy and numeracy skills as well as new areas such as Information Technology and communications.

Achievement through Learning for Young People

Engaging with young people to support their personal, social and educational development. To create opportunities for young people to develop into active citizens.

Achievement through Building Community Capacity

Building Community Capacity involves supporting both groups and individuals to develop the skills and confidence to influence what goes on in their own community whether it be influencing decision making on local services or managing local facilities.

Community Learning And Development Provision in Dundee Central

Learning for Adults

- Literacies provision has been expanded and targeted effectively at priority groups using a high quality promotional campaign.
- All adult learners are given the opportunity to access guidance workers to ensure that the most appropriate courses are undertaken.
- Across the area people can access help with finding out about training and job applications.
- The over 50 age group can take part in the Menolej and U3A projects.
- Effective partnerships involving local staff and Dundee College have delivered courses like the Forensic Science course and the Creative Writing Project organised through Hilltown Horizons.
- Tutors in English for Speakers of Other Languages (ESOL) have delivered programmes in Mitchell Street Centre and in the Stobswell area.
- Local Centres and Libraries provide access to computer equipment and training.

Learning for Young People

- Drugs and Alcohol Free-Time (DAFT) Project successfully diverts young people at risk of substance misuse into learning opportunities through music workshops.
- Many young people progress through group work and self-evaluation to Youth Achievement Awards. So far 34 young people have participated in the Junior Sports Leaders Awards at Dundee Football Clubs' Community Learning Centre.
- The Corner, The Shore and The Steeple Church provide good learning opportunities for young people in accessible city-centre locations.



- The Xplore project based in Mitchell Street Centre provides effective one to one support to challenging young people.
- Stobswell Out Loud and S Crew 5 have been effective in raising young people's issues within the Stobswell area.
- In response to demands from young people a wide range of agencies including Dundee United, Leisure & Communities Department, Police and the Web Project have collaborated to provide football drop-in sessions 2 nights a week in the Central Area.
- The Peer Education Project supports 2nd year pupils to provide primary 7 pupils with information and advice on substance misuse issues.
- The Highwayman Centre, Dundee International Women's Centre and Grey Lodge provide innovative youth work and foreign exchange opportunities for young people.
- The Young Carers Project provides support to young people who are looking after a family member.
- As part of the Integrated Community School development, 2 pupil support workers are based in the local Secondary Schools.

Community Capacity

- 15 local people from Fairmuir, Hilltown and Stobswell were elected to be part of the Central Community Regeneration Forum. In 2005 they have allocated almost £600,000 to support regeneration activity in the 3 community areas.
- Stobswell Forum, City Centre and Harbour Community Council and Hilltown Community Council have been established and recognised as Neighbourhood Representative Structures.
- Wide range of community groups and voluntary sector projects effectively involve people in developing responses to local issues.
- Local Area Co-ordinators are working with a range of partners to provide advocacy support for people with learning disabilities.
- Hearing Voices and Dundee Association for Mental Health are providing self-help support on mental health issues.
- Local people are heavily involved in organising the Hilltown Festival and Celebration in the Baxter Park community events.

Development Priorities

Learning for Adults

- Deliver a series of preparation and certificated training courses in childcare.
- Establish a community-run exercise class with accessible prices in Whitfield Activity Complex.
- Provide a greater range of learning opportunities using the new pavilion and computer suite in Mill O' Mains Park.
- Create co-ordinated marketing information which details adult learning opportunities in the communities of the northeast are.
- Establish a range of digital media programmes in addition to the digital photography class at Finmill Centre.
- Hold an annual jobs fair at Whitfield Activity Complex.
- Deliver literacy, numeracy and first qualifications courses.
- Explore the operation of a series of D.I.Y. beginner workshops.

Learning for Young People

- Investigate the needs of young people and children in the northeast with a view to establishing a strategy for the development of activities for the period 2005 to 2008.
- Establish a children and young people's fund to allocate funding to organisations/services that aim to provide additional facilities to young people aged 5 to 18 years.
- Create a multi-agency support initiative to help young people to access further learning, training and jobs.
- Work with young people about the dangers and illegality of using motorbikes/scooters in housing areas of the northeast.
- Explore the development of outdoor multi-sports facilities in Whitfield with young people.



Capacity Building

- Support the residents of Mill O' Mains to develop a disused bowling pavilion into a community resource with a new computer suite.
- Investigate the learning needs of the communities in North East Dundee and implement a range of services in response.
- Support residents' involvement in campaigning to improve the living conditions for all and provide activities to raise community spirit.
- Establish an urban ranger service to encourage residents involvement in the development of the environment at Middleton Wood and through the Dighty Valley.
- Create a business plan to enable Whitfield Activity Complex to develop a multi purpose hall and social area around its existing building.
- Establish a phased development of facilities in Finmill Centre, in conjunction with the local management group, to provide an expanded range of leisure and learning opportunities for all ages.



The Dundee Community Learning Strategy Group was formed to bring together partner agencies from the Dundee Partnership, with a stake in the Community Learning and Development field, to co-operate in developing Community Learning responses to issues raised by local communities with respect to their learning needs.

Central to the city-wide strategy is the need to create local partnerships that embrace the diversity and commitment of stakeholders in different neighbourhoods. The Action Plan described in this leaflet is the first stage in establishing the connection between strategy and local provision.

Stewart Murdoch

Chair Dundee Community Learning strategy Group

The Community Learning & Development Action Plan has been prepared by Dundee City Council Leisure and Communities Department on behalf of the Community Learning & Development Partnership. You will be able to access the full working document for this Action Plan on the Dundee Partnership website at www.dundeepartnership.co.uk. For details of how you can get involved contact:

Mike Welsh, Communities Officer
Leisure & Communities Department
101 Whitfield Drive,
Dundee DD4 0DX
Tel: 01382 438596
Email: mike.welsh@dundeecity.gov.uk



If you have difficulty understanding English please contact the address below:

ইংরেজী বুঝতে অসুবিধা হলে অনুগ্রহ করে নীচের ঠিকানায় যোগাযোগ করুন।

如果閣下對英語不十分明白，請與以下地址聯絡：

ନେବର ବ୍ରଦାନ୍ତୁ ଝିଗାଠି ସମ୍ରାଜ୍ଞା ବି ଚମତକଟ ବି ଚ ବଠି ନାହିଁ ଚୁଣ୍ଡି ଚି ଡା ହି ପା ବରବେ ଚେଠା ଚି ଡି ଚି ଚି ଚି ଚି ଚି ସମ୍ପରକ ବରବେ:

اگر آپ کو انگریزی سمجھنے میں مشکل پیش آتی ہے تو برائے کرم نیچے دیئے گئے پتے پر رابطہ کریں۔

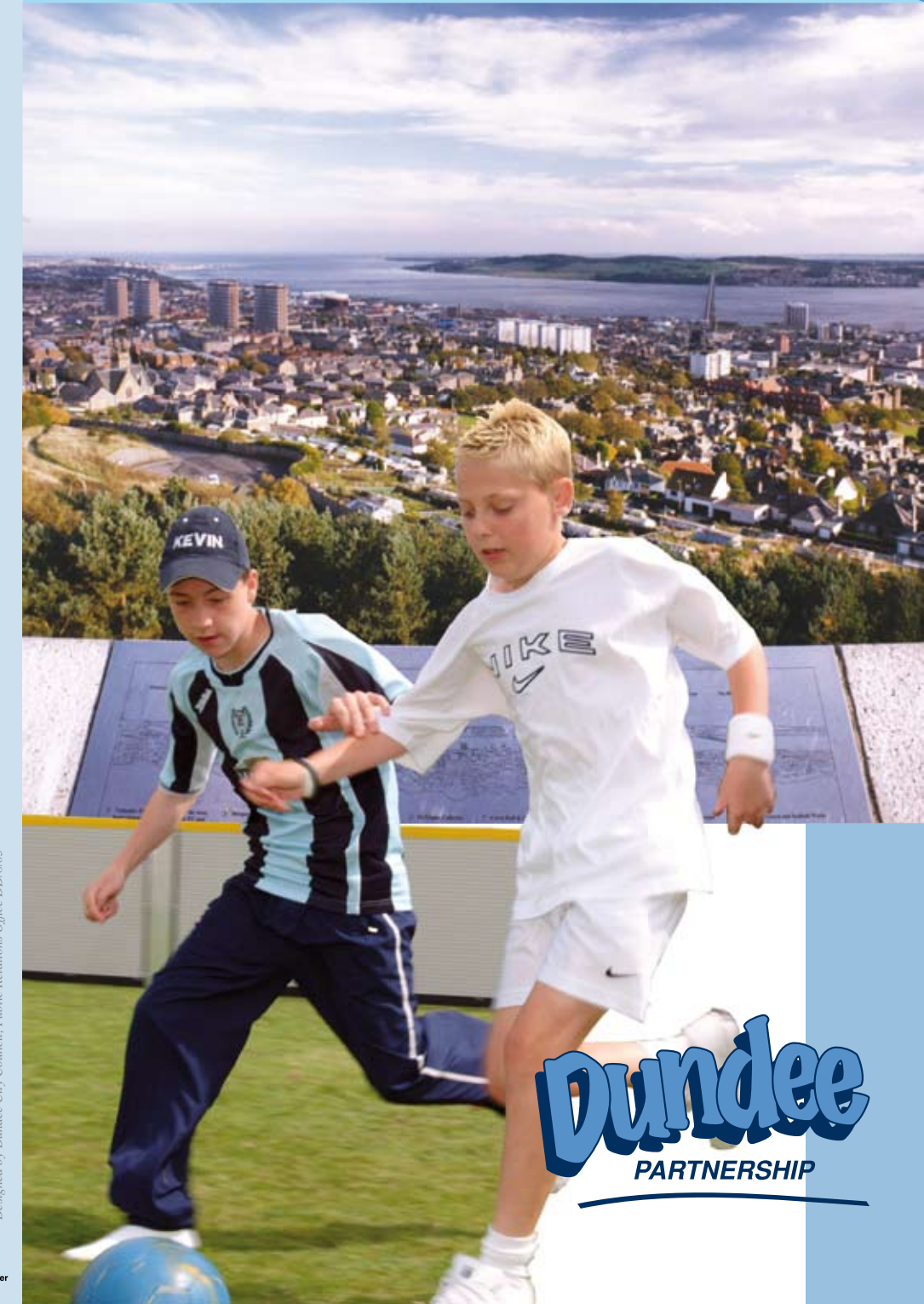
Dundee Translation & Interpretation Service,
Central Library, The Wellgate, Dundee DD1 1DB
Tel 01382 431563/431542
Email: translation@dundeecity.gov.uk

Dundee North East

Dalclaverhouse
Fintry
Mill O' Mains
Whitfield

COMMUNITY LEARNING AND
DEVELOPMENT ACTION PLAN

2005 - 2008



The Community Learning and Development Action Plan builds on the Local Community Planning Process.

We have looked at the Community's priorities as identified by the Community Planning Process and developed learning responses to those issues.

Our overview of Community Learning and Development work locally, combined with our current knowledge of community views on needs, aspirations and priorities, has allowed us to generate a Local Learning Action Plan for the next three years

This plan will support and develop local activities designed to address community priorities

This summary leaflet describes how Community Learning and Development is currently delivered in Dundee North East and outlines some of priorities for future action as identified in the Local Community Plan.

DUNDEE NORTH EAST

The northeast area stretches from the Kellas Road in the east to the Trottick Ponds in the west, and from the Dighty Burn north to the Dundee City Council boundary. The area is made up of Dalclaverhouse, Fintry, Mill O' Mains and Whitfield communities.

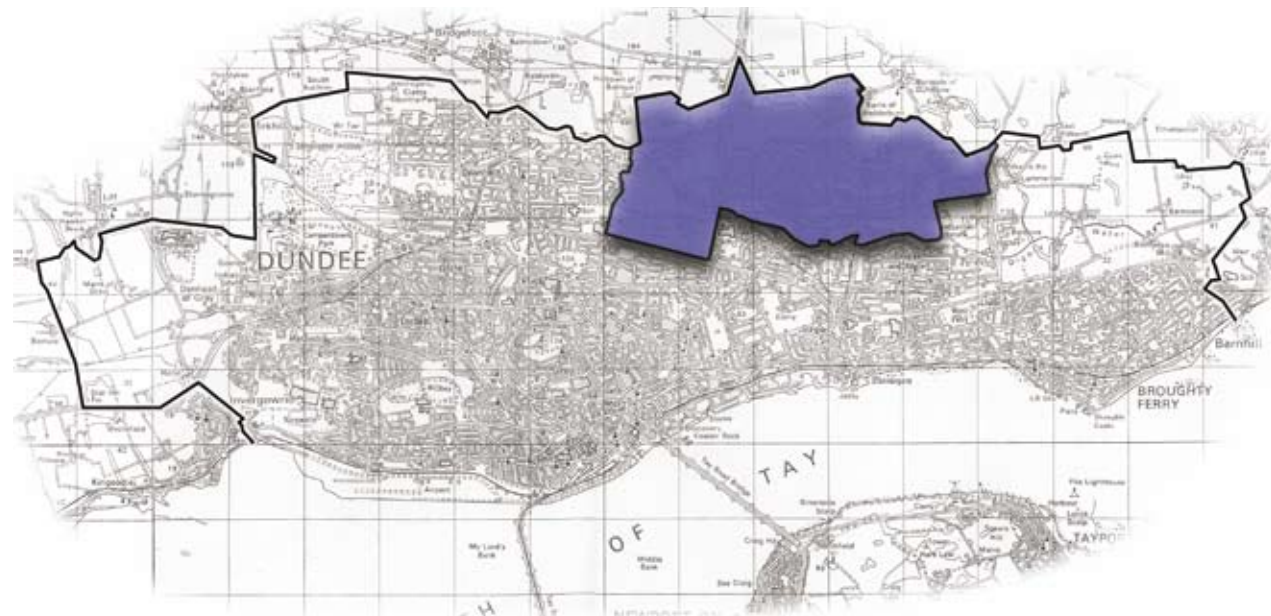
All of these communities have their own characteristics and are completely distinct.

Fintry has always had the feel of a large village and has a good range of community facilities, shops, churches and types of housing.

Whitfield has by far gone through the greatest change with a dramatic reduction of high-rise and low rise flatted accommodation and the famous "Skarne" blocks being systematically removed over the past fifteen years.

Mill O' Mains has gone through a less traumatic change but has still had a number of tenement blocks removed over the past few years.

These areas sit in contrast to the more affluent housing areas that have been built over the intervening period in Dalclaverhouse and to the north and east of Whitfield.



© Crown copyright. All rights reserved.
Dundee City Council Licence No. 100023371. 2005



National Priorities For Community Learning And Development

Achievement through Learning For Adults

Improving the opportunities for adults to participate in lifelong learning activities especially the development of core literacy and numeracy skills as well as new areas such as information technology and communications.

Achievement through Learning for Young People

Engaging with young people to support their personal, social and educational development. To create opportunities for young people to develop into active citizens.

Achievement through Building Community Capacity

Building Community Capacity involves supporting both groups and individuals to develop the skills and confidence to influence what goes on in their own community whether it be influencing decision making on local services or managing local facilities.

Community Learning And Development provision in Dundee North East

Learning for Adults

Dundee College and Communities Department organise Partnership for Learning Courses which offers tuition in several subjects like forensic science, sign language and childcare courses. A range of other learning opportunities are offered in the Finmill Centre and Whitfield Library and Learning Centre, eg baby/toddler reading groups, jobshops, computer courses and a range of support for people who have difficulties with reading and writing is provided.

Craigowl Communities provide a range of learning opportunities at The Family Learning House in Grampian Gardens. In addition to this, several projects provide support to help adults learn and develop their confidence, eg One Parent Families Scotland, Healthy Living Initiative and the Community Family Support Project.

Learning for Young People

Schools provide a range of formal learning courses and curriculum for children and young people from 3 up to 18 years old. Informal learning and is also provided through the Scouts, Guides, Boys/Girls Brigade, Drugs and Alcohol Free Time (DJ training), Xplore and through drop-in youth facilities at Whitfield Activity Complex and Finmill Centre.

The Fintry North Youth Project and Mill O' Mains Residents' Association Youth Sub Group provide activities and trips for young people through the effort of residents and parents. A range of sports activities are provided through locally run sports clubs/teams and the Youth Sports Development Team operate a vast range of activities in Fintry, Mill O' Mains and Whitfield.

As part of the Integrated Community school development, Dundee City Council has two pupil support workers based in each secondary school. These workers deliver a range of youthwork activities in a variety of settings.

Capacity Building

Lots of organisations and agencies are involved in helping residents make change in their communities. The housing department of Dundee City Council has a tenant participation policy which involves staff in supporting a number of tenants and residents groups in the northeast. In addition to this, housing associations also support residents to get involved in the management of their organisations.

The Leisure and Communities Department of Dundee City Council offers support to Community Centre Management Groups and people who are keen to set up residents' groups or respond to an issue which is of importance to them in their community. Information, training and development support are provided to residents who, through working together with other residents, can improve their circumstances.

Representative community groups also operate in the northeast. Fintry Community Council and Whitfield Inclusion Network Group operate in a way which seeks to represent these communities.



Development Priorities

In the South East the characteristics of the Communities and the Scottish Executives priorities determine a priority be given to the Pitkerro and Douglas wards, given the levels of deprivation and the concentration of young people.

In practice this happens through the provision of mainstream services at Douglas Community and Library Centre (Douglas), The Hub Library and Learning Centre (Pitkerro).

Also additional provision through Community Regeneration Funding based on targeting deprivation, supplements the mainstream through projects such as Under 12's Project, Midlin Day Care, Brooksbank, Community Capacity Project, Learning Around, Healthy Living Initiative, Factory Skatepark.

Based on the Community Plans Priorities, ongoing Community Engagement, Consultations, ongoing Youth Consultations, and an overview of current provider's feedback, priorities for a three-year Action Plan have been drafted as follows.

Pitkerro

- Organise a Jobs and Benefits Information Day. Use this to cement better collaboration and networking between agencies, improving services to local people, develop partnerships to deliver Pre Recruitment Training.
- Provide school holiday activities for children, young people, families, and adults.
- Support the work of the Craigie Residents Association in its key role representing community needs and opinion.
- Support the development of the Midlin Festival as an annual community celebration.
- Engage with children and young people to support youth consultation, issue-based youth work and young peoples involvement in decision-making.
- Conduct an Older Peoples Consultation to establish any unmet demands for learning opportunities. Develop a collaborative partnership response to identified priorities.
- Promote membership and usage of the Hub library through sign posting, promotions and events.
- Bring together local people and relevant agencies to monitor and address issues of concern in the general environment.
- Establish a short-life task group made up of relevant agencies to review the services and support available about healthy lifestyles.
- Report the outcome to the local community and commit to dialogue to improve services.
- Continue to develop literacy and numeracy provision in line with local demands.
- Establish a partnership to collaborate in response to local people's demands for chances to learn. Produce an annual Local Learning Guide to publicise opportunities to the community.

- Engage with local people to encourage active citizenship, support community groupings and build community capacity.
- Develop Intergrated Community School approach at St. Saviours High, through the establishment of multi-agency school cluster support group.

Douglas

- Work with local community groups/and active community members to develop their understanding, skills and confidence around the parcel of issues related to change of use, closure, demolition and development in the central core of Douglas.
- Establish an Environmental Task Group to bring together local people and relevant agencies to monitor and address issues of concern in the general environment.
- Engage with children and young people to support youth consultation, issue-based youth work and young peoples involvement in decision-making.
- Develop and implement a collaborative programme of school holiday activity for children, young people, families, and adults.
- Support the establishment of a Douglas Gala as a community celebration.
- Continue to develop literacy and numeracy provision in line with local demands.
- Engage with local people to encourage active citizenship and lifelong learning, develop needs led/Issues based adult learning, support community groupings and build community capacity.
- Develop Integrated Community School approach at Craigie High through the establishment of a multi-agency school cluster group.

Craigiebank

- Support Craigiebank Community Association in its role as key community grouping, developing partnerships, hosting events, providing information, producing a local newsletter, pursuing funding and developing the Community Hall.

Community Meetings And Events

Community Roundtables are held in Mid Craigie/Linlathen and Douglas. They bring together people from community groups in the area and anyone interested that lives locally to raise issues of concern and hear reports on what has been happening with Community Plan issues, Community Regeneration, ongoing issues and planned events.

Alive and Kicking (Douglas) and the Midlin News (Midlin) are local Community Newsletters. They are delivered to every house in the Communities. They carry full information about community events and learning opportunities. Many Community groups advertise their meetings through posters in Libraries, Post Offices, Shops, Sheltered Complexes and through localised leaflet drops. Often word of mouth works best.

Keeps your eyes peeled and your ears open. For details of ongoing learning opportunities drop into your local Library, pick up information leaflets and ask the staff.

The Dundee Community Learning Strategy Group was formed to bring together partner agencies from the Dundee Partnership, with a stake in the Community Learning and Development field, to co-operate in developing Community Learning responses to issues raised by local communities with respect to their learning needs.

Central to the city -wide strategy is the need to create local partnerships that embrace the diversity and commitment of stakeholders in different neighbourhoods. The Action Plan described in this leaflet is the first stage in establishing the connection between strategy and local provision.

Stewart Murdoch

Chair Dundee Community Learning strategy Group

The Community Learning & Development Action Plan has been prepared by Dundee City Council Leisure and Communities Department on behalf of the Community Learning & Development Partnership. You will be able to access the full working document for this Action Plan on the Dundee Partnership website at www.dundeepartnership.co.uk. For details of how you can get involved contact:

Richard Whyte, Communities Officer
Leisure & Communities Department
Douglas Community Library and
Learning Centre, Balmoral Avenue
Dundee DD4 8SD
Tel: 01382 436909
Email: richard.whyte@dundeecity.gov.uk



If you have difficulty understanding English please contact the address below:

ইংরেজী বুঝতে অসুবিধা হলে অনুগ্রহ করে নীচের ঠিকানায় যোগাযোগ করুন।

如果閣下對英語不十分明白，請與以下地址聯絡：

ନେବ ବ୍ରହାଣ୍ଡ଼ି ଝିଗାଞ୍ଜି ସମ୍ରାଜ୍ଞା ବି ଚମତକଟ
ବି ଚ ବଠି ନାଣି ହୁଣି ଚି ଡା଼ ବି ଧା ବରବେ
ପଠା଼ ଚି ଡି ଚି ଡି ଡି ଡି ଡି ସମ୍ପରକ ବର:

اگر آپ کو انگریزی سمجھنے میں مشکل پیش آتی ہے تو برائے کرم نیچے دیئے گئے پتے پر رابطہ کریں۔

Dundee Translation & Interpretation Service,
Central Library, The Wellgate, Dundee DD1 1DB
Tel 01382 431563/431542
Email: translation@dundeecity.gov.uk

Dundee South East

COMMUNITY LEARNING AND
DEVELOPMENT ACTION PLAN

2005 - 2008

Pitkerro
Douglas
Craigiebank



Dundee
PARTNERSHIP

The Community Learning and Development Action Plan builds on the Local Community Planning Process.

We have looked at the Community's priorities as identified by the Community Planning Process and developed learning responses to those issues.

Our overview of Community Learning and Development work locally, combined with our current knowledge of community views on needs, aspirations and priorities, has allowed us to generate a Local Learning Action Plan for the next three years

This plan will support and develop local activities designed to address community priorities

This summary leaflet describes how Community Learning and Development is currently delivered in South East and outlines some of priorities for future action as identified in the Local Community Plan.

DUNDEE SOUTH EAST

The Community Learning and Development Action Plan builds on the Local Community Planning Process.

We have looked at the community priorities brought out in Local Community Planning and developed learning responses.

We have looked at work locally, what learning opportunities exist and what we know about community views, needs, aspirations and priorities. From this we have generated a Local Action Plan for the next three years.

This action plan is developed around three National Priorities - Learning Opportunities For Adults, Learning Opportunities For Young People, Building Community Capacity. This is to support and develop learning and development activities locally, which relate to local people and their needs.

South East Dundee contains three council electoral wards, Pitkerro, Douglas and Craigiebank, with a total population of around 16 thousand people.

Pitkerro ward comprises the communities of Linlathen, Mid Craigie and parts of Douglas/Craigie.

Pitkerro has the 4th worst levels of deprivation in Dundee, the 37th worst in Scotland, nearly 29% of the population were 18 or under at the last census.

Douglas ward comprises the bulk of the community of Douglas.

Douglas has the 7th worst level of deprivation in Dundee, the 56th in Scotland, nearly 25% of the population were 18 or under at the last census.

Craigiebank ward comprises the community areas of Craigie, Craigiebank and Craigiebarns.

Craigiebank has far lesser levels of deprivation than the other wards in the South East, nearly 35% of the population were 65 or over at the last census and only 15% 18 or under.

National Priorities For Community Learning and Development



Achievement through Learning For Adults

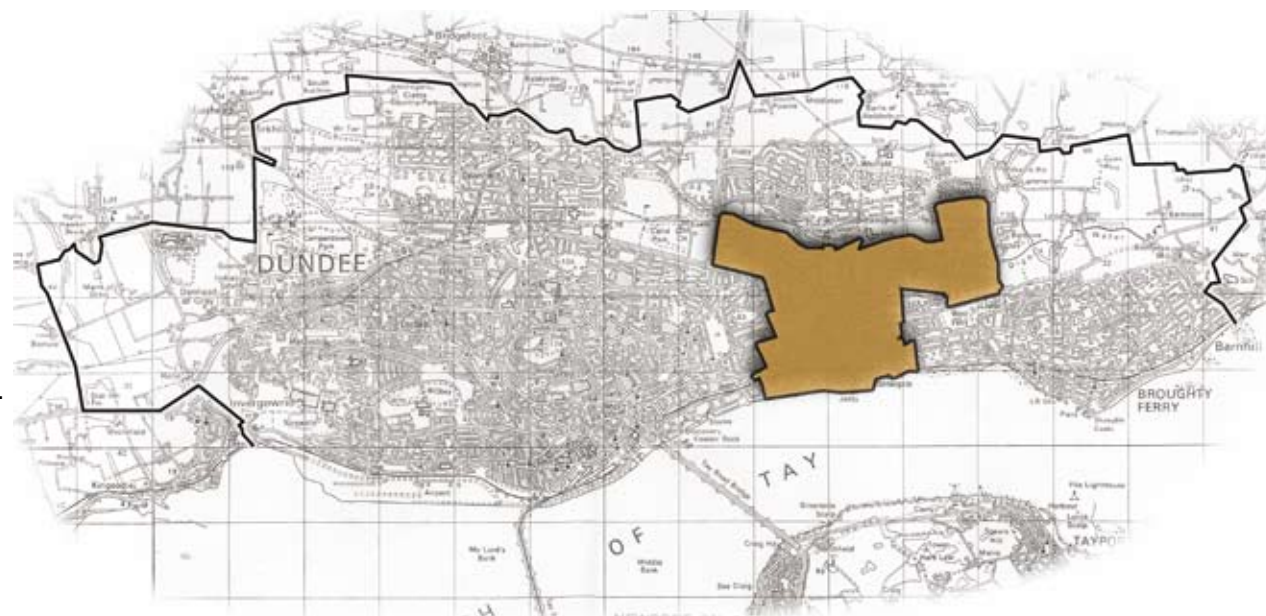
Improving the opportunities for adults to participate in lifelong learning activities especially the development of core literacy and numeracy skills as well as new areas such as information and technology and communications.

Achievement through Learning for Young People

Engaging with young people to support their personal, social and educational development. To create opportunities for young people to develop into active citizens.

Achievement through Building Community Capacity

Building Community Capacity involves supporting both groups and individuals to develop the skills and confidence to influence what goes on in their own community whether it be influencing decision making on local services or managing local facilities.



Community Learning and Development Provision in Dundee South East

Learning for Adults

In Pitkerro Ward, a variety of needs led learning opportunities including Community Guidance, Literacies, Volunteering, Formal and Informal, Accredited Certificated Learning, Creative Writing, Digital Media, Community Library, Reading Group, and Local Studies are provided at a range of local venues including the Hub Library and Learning Centre, Brooksbank, Midlin Day Care, Under 12's Project and Lend a Hand Project.

In Douglas, the Douglas Community and Library Centre is the main provision base for Adult Learning, which is needs led. Current provision includes basic computer groups, European Computer Driving Licence, Stress Management and Relaxation Group, Women's Health Issues Group, Men's Group, Literacy's Tuition, Local History, Walking Group, Carpet Bowls, Snooker and Line Dancing.

The Community Library Service provides opportunities through a Reading Group, Computer Access, IT Tasters in addition to traditional lending of books, large print, DVD's and videos.

Dundee College works in partnership with Dundee City Council's Leisure and Communities Department to provide Learning on your Doorstep Courses in response to local needs.

Residents in Craigiebank Ward access the Learning Opportunities available at Douglas Community and Library Centre. The Centre is readily accessible for residents in the northern part of the ward and is served by a good bus route.

The Craigiebank Community Association was formed to develop the Craigiebank Church Hall premises into a secular community facility and provides activities such as Pensioner's Tea Dances, Art Exhibitions, Community Newsletter and Parent and Toddlers.

Learning for Young People

In Pitkerro Ward, a broad range of learning opportunities for young people are provided through youth outreach/streetwork, youth information, youth consultation and responses to demands.

There are fixed youth and children's work sessions at the Hub, Brooksbank and Under 12's Project, with a plan to extend provision to the Rowans building when the Midlin Day Care Project move premises.

The Hub Community Library Service provides story telling, class visits, Summer Reading Program, Homework Club, IT Access and school holiday activities.

Summer holiday activities are popular and provided through the Leisure and Communities Department and the under 12's Project.

Children and young people in Craigiebank can access the opportunities at Douglas Community and Library Centre. The Craigiebank Community Association, Community Hall hosts Rainbows, Brownies, and Parent and Toddlers.

Capacity Building

The Mid Craigie and Linlathen area has long been targeted for various policy and resource initiatives to respond to social deprivation and support Community Regeneration. Residents are involved with a number of community groupings and activities which range from Residents Groups, Project Management Boards, Community Roundtables to the local Community Regeneration Forum.

Residents in Douglas are involved in a range of community groupings and community activities. These include Balmoral Residents Association, Local Centre Management Group, Balerno Activity Group, Douglas Lads, Gala Committee, NHS Public Participation Panel, Community Roundtables and the Community Regeneration Forum.

In both these areas, activity and involvement in Community Groupings, adult learning activities and issues based youth work/youth action, residents are supported, mentored and encouraged to develop confidence and skills to progress their personal and social development and to further their involvement in collective community organisation.



The key focus for building community capacity in Craigiebank is through support to the Craigiebank Association to develop the hall premises and activities in response to community demand. This is enabled by supporting access to funding and the production of a community newsletter.

Development Priorities

Adult learning

- Produce and maintain a Community Learning Action Plan for the Broughty Ferry area.
- Undertake an audit of current adult learning provision as a "gap" analysis of unmet learning needs in the community.
- Work with local voluntary organisations to improve access to and delivery of computer-based training locally.
- Develop "walks network" to encourage healthy activities for older people.
- Develop strategies to target the health issues of vulnerable groups more effectively.
- Provide support for residents to give up smoking, to encourage healthy eating and to avoid substance misuse.

Young people

- Consult with young people to identify feasibility, physical activity and recreation provision.
- Form a Youth Strategy Group to co-ordinate and develop youth resources in Broughty Ferry.
- Work with young people to address local residents' perceptions of anti-social behaviour in young people.
- Support the development of community based sports activities and youth facilities.
- Improve availability and content of information to young people on sexual and mental health issues.
- Develop specific lunchtime information sessions for Grove Academy pupils with focus on careers and post school education.
- Deliver road safety awareness sessions in local schools & develop sustainable transport options to school.
- Explore the development of further after school provision in Dundee East.
- Develop support for young people at Grove Academy as part of the Integrated Community School initiative.

Community Capacity

- Develop opportunities for residents to contribute to the management of public parks and open spaces including, the beach and waterfront.
- Develop a Community Safety group to respond to issues raised by community consultation.
- Create opportunities for residents to contribute towards the Community Planning process in their neighbourhood.
- Support the development of Barnhill Community Association.
- Undertake an audit of the training and support requirements of local community organisations.
- Develop dialogue between Disability Rights groups and local traders in Broughty Ferry to promote disabled access issues.
- Develop a range of support services for mothers and young families.
- Facilitate the involvement of the Volunteer Centre, Dundee in promoting the benefits of volunteering, locally.
- Encourage greater cross over and collaboration between Community Groups in local projects.

The Dundee Community Learning Strategy Group was formed to bring together partner agencies from the Dundee Partnership, with a stake in the Community Learning and Development field, to co-operate in developing Community Learning responses to issues raised by local communities with respect to their learning needs.

Central to the city-wide strategy, is the need to create local partnerships that embrace the diversity and commitment of stakeholders in different neighbourhoods. The Action Plan described in this leaflet is the first stage in establishing the connection between strategy and local provision.

Stewart Murdoch

Chair Dundee Community Learning strategy Group

The Community Learning & Development Action Plan has been prepared by Dundee City Council Leisure and Communities Department on behalf of the Community Learning & Development Partnership. You will be able to access the full working document for this Action Plan on the Dundee Partnership website at www.dundeepartnership.co.uk. For details of how you can get involved contact:

The Communities Officer
Leisure & Communities Department,
Mitchell Street Centre,
Mitchell Street, Dundee
Tel: 01382 435803



If you have difficulty understanding English please contact the address below:

ইংরেজী বুঝতে অসুবিধা হলে অনুগ্রহ করে নীচের ঠিকানায় যোগাযোগ করুন।

如果閣下對英語不十分明白，請與以下地址聯絡：

ନେବ ଡ୍ରାଫ୍ଟ୍ ଡିଗାଲି ମହାମା ବି ଚମତ୍ତ ବି ଚବତି ନାହିଁ ଟୁଣି ଟି ଡାଁ ହି ଧାବତେ ଟେଠାଁ ଡି ଡି ଟି ଡି ଡି ମହାବ ବଟି:

اگر آپ کو انگریزی سمجھنے میں مشکل پیش آتی ہے تو برائے کرم نیچے دیئے گئے پتے پر رابطہ کریں۔

Dundee Translation & Interpretation Service,
Central Library, The Wellgate, Dundee DD1 1DB
Tel 01382 431563/431542
Email: translation@dundeecity.gov.uk

Dundee East

Broughty Ferry
Balgillo
West Ferry
Barnhill

COMMUNITY LEARNING AND
DEVELOPMENT ACTION PLAN

2005 - 2008



Dundee
PARTNERSHIP

The Community Learning and Development Action Plan builds on the Local Community Planning Process.

We have looked at the Community's priorities as identified by the Community Planning Process and developed learning responses to those issues.

Our overview of Community Learning and Development work locally, combined with our current knowledge of community views on needs, aspirations and priorities, has allowed us to generate a Local Learning Action Plan for the next three years

This plan will support and develop local activities designed to address community priorities

This summary leaflet describes how Community Learning and Development is currently delivered in Dundee East and outlines some of priorities for future action as identified in the Local Community Plan.

DUNDEE EAST

The Dundee East decentralisation area includes the Dundee City Council Wards of Broughty Ferry, Balgillo, Barnhill and West Ferry.

The area is largely residential with a commercial and social hub centred between the waterfront and the coastal railway line.

This is the "Broughty Ferry" that attracts visitors from far and near. The epitome of an East Coast harbour village! Steeped in tradition and a mecca for lovers of sea air and ice cream!

Broughty Ferry is an active, living community, amongst the most affluent in Dundee, where a network of community groups and local organisations are the main providers of Community Learning & Development.



National Priorities For Community Learning And Development

Achievement through Learning For Adults

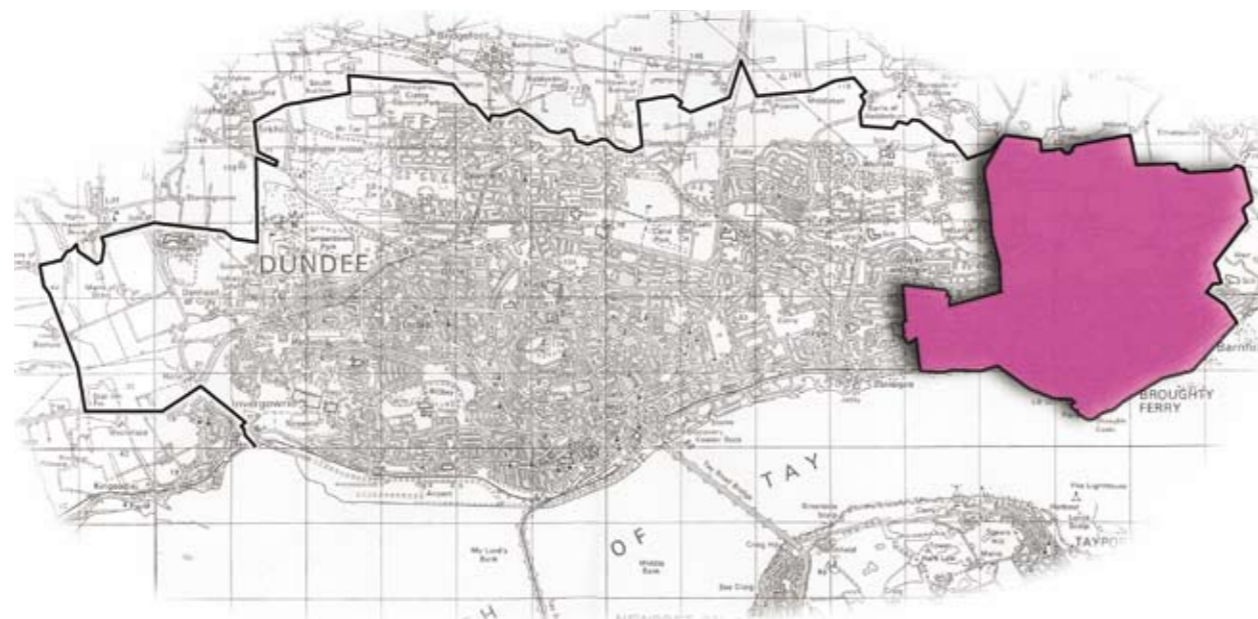
Improving the opportunities for adults to participate in lifelong learning activities especially the development of core literacy and numeracy skills as well as new areas such as information technology and communications.

Achievement through Learning for Young People

Engaging with young people to support their personal, social and educational development. To create opportunities for young people to develop into active citizens.

Achievement through Building Community Capacity

Building Community Capacity involves supporting both groups and individuals to develop the skills and confidence to influence what goes on in their own community whether it be influencing decision making on local services or managing local



© Crown copyright. All rights reserved.
Dundee City Council Licence No. 100023371. 2005

Community Learning and Development provision in Dundee East Learning for Adults

The major provider of informal Adult Learning provision in Dundee East is Broughty Ferry Education and Recreation Association. (BERA). BERA was founded in 1981 and is the longest running such association in the City. Based in Grove Academy, BERA very much caters for the "evening class" market offering a broad range of courses to meet local needs.

Demand for computer based learning has led to the development of Information Technology learning facilities in Broughty Ferry Library supported by Dundee City Council Leisure and Communities Department staff.

There are a lots of community groups delivering learning at all levels based on common interests. The Amateur Operatic Society, the Art Society, Royal Tay Yacht Club to name but a few.

These groups are only indicative of the range of local skills and expertise that can be brought in to play to meet local learning needs.

Learning for Young People

Traditional uniformed youth organisations form the backbone for provision for young people in Broughty Ferry and Barnhill. Local churches, in particular, host a wide variety of these activities for young people.

Elsewhere, including the YMCA, there are sports and activity groups offering recreational development opportunities.

Broughty Ferry Library provides a focal point for youth information services to the area and several interest groups that meet in the library are supported by staff from the Leisure and Communities Department Youth Team.

Dundee City Council Sports Development Staff and Countryside Rangers also work with groups of local youngsters in a variety of settings.

Services for younger children and families are featured in out-of-school care projects and parent and toddler groups run by local voluntary groups.

Capacity Building

Broughty Ferry Community Council provides a popular platform for raising local concerns and providing community responses to those seeking to consult on developments.

Members contribute to city-wide forums and access training opportunities presented by Dundee City Council. The Community Council's own Action Plan provides a clear interface between their representative role and their willingness to be pro-active in addressing local issues.

Other local organisations have formed around particular issues or interests such as environment, disabilities or fly fishing!

The existence of a large number of community and voluntary groups may be seen as evidence of the area's wealth of social capital.