

ITEM No ...3.....

REPORT TO: CHILDREN AND FAMILIES SERVICES COMMITTEE – 25 JANUARY 2021

REPORT ON: BRAEVIEW ACADEMY, CRAIGIE HIGH SCHOOL AND CRAIGIEBARNES PRIMARY SCHOOL - OUTCOME OF THE FORMAL CONSULTATION PROCESS

REPORT BY: EXECUTIVE DIRECTOR OF CHILDREN AND FAMILIES SERVICE

REPORT NO: 44-2021

1.0 PURPOSE OF REPORT

1.1 This report contains the formal Consultation Report, in terms of the Schools (Consultation) (Scotland) Act 2010, on the proposal to close Braeview Academy and Craigie High School and the re-delineation of existing school catchments to form a new single catchment area for a new joint secondary school/community learning campus from August 2024; and the expansion of the catchment area for Grove Academy from August 2024 to embrace the current Craigiebarns Primary School catchment area.

2.0 RECOMMENDATIONS

It is recommended that Children and Families Services Committee:

- i. notes the contents of this report;
- ii. notes the accompanying Consultation Report, including the report by Her Majesty's Inspectorate of Education (HMIE)/Education Scotland on the proposal;
- iii. approve that Braeview Academy and Craigie High School be closed and a new combined community campus is established and located on Drumgeith road, and the expansion of the Grove Academy catchment area to include Craigiebarns Primary School;
- iv. approve a revision to the planned opening of the Community Campus to August 2025 resulting from delays as a consequence of the COVID-19 Pandemic.
- v. approve a revision to the Grove Academy catchment area to include Craigiebarns Primary from the start of session 2025/2026 to align with the revised planned opening of the Community Campus.
- vi. instructs the Executive Director to ensure a 4-year transition is planned through a Project Board including representative staff, pupils and parents from the existing Braeview Academy and Craigie High School, consulting on the building, vision, values and aims, improvement planning, pupil transition and the identity of the new Campus;
- vii. instructs the Executive Director to ensure clear travel plans are collaboratively developed by affected schools for families attending the new Community Campus and Grove Academy, and also agree any action that will be required to upgrade current routes to school;
- viii. instructs the Executive Director to notify the Scottish Ministers of the decision to implement the proposal as approved with the revised opening dates; and
- ix. instructs the Executive Director to proceed with the proposal as approved with the revised opening dates after it has been considered by the Scottish Ministers.

3.0 FINANCIAL IMPLICATIONS

3.1 Subject to committee approval, the new community campus will replace the current provision for Braeview Academy and Craigie High School, the estimated capital cost of a new building will be in the region of £60m. This is currently provided for in the 2020/25 Capital Plan on the basis that £20m will be funded from general borrowing supported by provision in the Capital

Financing Coats revenue budget, £20m will be funded through prudential borrowing which will require to be supported by revenue budget savings of approximately £1m and £20m which will be supported by revenue funding following the successful bid to Scottish Government for partnered support through the Learning Estate Strategy.

4.0 BACKGROUND

- 4.1 The replacement of outdated and inefficient secondary school buildings will make a substantive contribution to the sustainability and energy efficiency of the wider school estate and make a significant contribution to reducing future CO2 emissions.
- 4.2 The opportunity for families residing within the Craigiebarns Primary School catchment area to have their children attend Grove Academy will increase the number of priority 1 pupils within the future Grove Academy roll and reduce the number of placing requests being made by families currently living within this locality.
- 4.3 The plan for replacement of Braeview Academy and Craigie High School sits within the wider Dundee City Council Capital Investment Strategy, Article VII of the minute of meeting of the Policy and Resources Committee of 11 December 2017, report no 419-2017 refers, which makes recommendations regarding future work-streams and policies required to deliver the overall Learning Estate Strategic Plan.
- 4.4 Investment in the Learning Estate improves educational benefits for children and young people and increases opportunities for the wider communities. In terms of the Secondary Estate, recent approvals have enabled us to embark upon wider consultation on the development and delivery of community hubs, an approach which will see learning estate playing a more integral part within its community.
- 4.5 Accommodation will endorse and extend established educational partnerships with Dundee and Angus College, Michelin Skills Centre/Innovation Parc, Dundee Schools Music Theatre, and instrumental music opportunities available in the city. It would be our intention to learn from current engagements and expand opportunities enabling wider access to facilities and supporting the flexibility of service delivery.
- 4.6 By 2024 a considerable number of children with instrumental experiences will be transitioning to secondary and the number of instrumentalists within the community campus will be much higher than comparator schools due to the broader catchment area. Recognition of this and exploration of how this continues into their secondary experience will be very important.
- 4.7 We would wish to expand our approach to support families and young people with multiple and complex additional support needs. The opportunity exists to work with a number of local organisations to expand our integrated community approach whilst also increasing learning opportunities and partnership working.
- 4.8 At its meeting on 27 January 2020, the Children and Families Service Committee instructed the Executive Director to formally consult on the proposals to close Braeview Academy and Craigie High School; and expand the catchment area of Grove Academy to embrace the catchment area of Craigiebarns Primary School in terms of the Schools (Consultation) (Scotland) Act 2010 and report back to Committee in due course. It was intended that the outcomes of the consultation proposal be brought to the June 2020 committee, Article III of the minute of meeting of this Committee of 27 January 2020, report no. 42-2020 refers.
- 4.9 The formal consultation on the proposal ran from 10 February to 27 March 2020. Details of the consultation were notified in writing to stakeholders and on the council's website, responses were invited in either written or electronic format. As part of its arrangements for consulting on the proposal, the council held public meetings on 5 and 11 March 2020.

- 4.10 Due to the COVID-19 Pandemic, in March 2020, the consultation was paused and the June committee was suspended with all relevant business reassigned to later committees. As a result of the interruption to the consultation process, a further three-week period of online consultation was undertaken during August and September 2020. During the entire consultation period, the council received written responses from Twenty-Four consultees to the proposal.
- 4.11 A copy of the consultation report is attached as Appendix 1, a copy of the report by Education Scotland is attached as Appendix 2 and copies of the notes of the meetings held during the consultation period are attached as Appendix 3.
- 4.12 In November 2020, elected members agreed at the Policy and Resources Committee to settle the insurance claim in relation to the Braeview Academy fire, Article XX of the minute of meeting of the Policy and Resources Committee of 16th November 2020, report no.309-2020 refers. It is intended that, if this proposal is agreed, Braeview Academy will remain in their temporary accommodation until such time as a new building is ready.

5.0 **SCOTTISH GOVERNMENT LEARNING ESTATE INVESTMENT PROGRAMME (LEIP) PHASE TWO**

- 5.1 On 18 December 2020, subject to relevant and appropriate approvals, the Scottish Government announced the projects which would be included within phase two of the LEIP, the replacement of Braeview Academy and Craigie High School was included within the list of projects which would receive funding support.
- 5.2 The funding model of the LEIP is based on up front Local Authority capital borrowing. Successful submissions to LEIP are anticipated to receive ongoing revenue support to maintain the condition of buildings from Scottish Government. The premise of the funding will be on a 50:50 'like for like' basis to support the delivery of outlined outcomes, over a 25-year period.
- 5.3 Consistent with the Scottish governments learning estate strategy the investment programme is designed to deliver high quality, suitable, sustainable, low carbon, digitally enabled learning environments. Funding contribution from the Scottish Government is dependent on achieving certain conditions and outcomes which align to these criteria.
- 5.4 The school will be designed to comply with the area and cost guidance metrics as published by Scottish Futures Trust (SFT) and for a proposed school of this size are 10m² per pupil and a cost basis of £3120/m².
- 5.5 To ascertain feasibility of the school estate proposal, a series of options were considered, including;
- Maintaining the existing Braeview Academy and Craigie High School;
 - Build a single new community campus to replace Braeview Academy and Craigie High School; or
 - Construct a replacement Braeview Academy and Craigie High School.
- 5.6 Of these, the building of a single new community campus to replace Braeview Academy and Craigie High School presented the most affordable and financially viable option
- 5.7 If approved, the community campus accommodation will offer flexibility of use for the school and wider community and would be built to accommodate school roll changes over the years. The community campus will also allow the council to provide a purpose-built learning environment which was outlined within the consultation proposal paper.

6.0 APPROVAL OF THE PROPOSAL

- 6.1 HM Inspectors agree that the two aspects of the proposal have the potential to bring clear educational benefits for the children and young people in the area. In relation to the proposed new secondary school, whilst all stakeholders who met with HM Inspectors agree, a few raised concerns about transport, safe routes and the potential for flooding at the proposed site. Should the proposal go ahead, we will continue to work with all relevant communities to provide re-assurance and seek solutions where appropriate as outlined in the consultation report in relation to all elements of the proposal.
- 6.2 If the proposed project goes ahead, the site start date would be anticipated to be August 2021 with construction completed by May 2025.
- 6.3 As this proposal relates to the closure of a school, the council must notify Scottish Ministers within six working days after taking its decision to implement a closure proposal. Dundee City Council must also publish on its website the fact it has notified Scottish Ministers of this decision and the period in which consultees have the opportunity to make representations to Ministers asking for the proposal to be called in. Ministers have the power to call in proposals, but only where it appears to Ministers that the council has failed in significant regard to comply with the Act's requirements or, in coming to its decision, has failed to take account of material consideration relevant to the proposal. Ministers have up to 8 weeks from the date of the council's decision to decide whether or not to issue a call-in notice.

7.0 POLICY IMPLICATIONS

- 7.1 This Report has been subject to an assessment of any impact on equality and diversity, fairness and poverty, environment and corporate risk. A copy of the Impact Assessment is available on the Council's website at www.dundee.gov.uk/ia/reports.
- 7.2 A four-year transition plan will be developed to ensure pupils and staff are supported appropriately during the process and their needs are met. This will include joint Improvement and curricular planning for the new school.
- 7.3 A project board involving council officers, staff, pupils and parents from both secondary schools will consult on and monitor the development process, the new school name and identity.

8.0 CONSULTATIONS

- 8.1 The Council Management Team have been consulted in the preparation of this report.

9.0 BACKGROUND PAPERS

- 9.1 None.

Mr Paul Clancy
Executive Director of Children and Families Service

January 2021

DUNDEE CITY COUNCIL

CONSULTATION REPORT

The closure of Braeview Academy and Craigie High School and the re-delineation of existing school catchments to form a new single catchment area for a new joint secondary school/community learning campus from August 2024; and the expansion of the catchment area for Grove Academy from August 2024 to embrace the current Craigiebarns Primary School catchment area.

This Consultation Report is available on the Dundee City Council website – <https://www.dundee.gov.uk/school-learning-estate-formal-consultation> - and also in printed form from the following locations: Braeview Academy and associated primary schools, Craigie High School and associated primary schools, Grove Academy and associated primary schools.

1.0 BACKGROUND

- 1.1 Article VI of the Minute of the Meeting of the Children and Families Services Committee held on Monday 9 September 2019, report no 297-2019, notes that the Executive Director of Children and Families Services, following completion of a period of related informal consultation, was instructed to execute further work on the options for Braeview Academy and Craigie High School and bring recommendations back to the Children and Families Service Committee for approval.

At its meeting on 27 January 2020, the Children and Families Service Committee instructed the Executive Director to formally consult on the proposals in terms of the Schools (Consultation) (Scotland) Act 2010 and report back to Committee in due course on the outcome of the consultations.

- 1.2 The proposal was that Craigie High School and Braeview Academy be discontinued at the close of school session June 2024 and a single combined community campus be created.

It was also proposed that the catchment area for the new secondary school/community learning campus would consist of the current catchment area for Braeview and the current catchment area for Craigie, with the exception of Craigiebarns Primary School; and the expansion of the catchment area for Grove Academy to embrace the current Craigiebarns Primary School catchment area. This was expected to commence from August 2024.

- 1.3 A number of educational benefits were identified as part of this proposal:

- 1.3.1 Dundee City Council aims to provide the best possible learning environment for delivering relevant twenty first century learning for its children and young people. This aspiration is consistent with the shared vision and priorities within the Tayside Plan for Children, Young People and Families 2017-2020. The creation of a modern, vibrant community learning campus within the east of Dundee will be instrumental in the effective delivery of pupil entitlements outlined within the Curriculum for Excellence and the aspirations to achieve excellence and equity outlined within our local and national school improvement frameworks.
- 1.3.2 Dundee's Council Plan (2017-22), outlines a strong commitment to establishing strong and safe communities and extending community access to a range of cultural, learning, leisure and sport services. It is further envisaged that the new school/learning campus will support the realisation of such aspirations.

- 1.3.3 The new school/learning campus environment in its entirety will have a positive impact on the motivation, behaviour and aspirations of young people, providing ideal conditions for learners to learn and teachers to teach. Improved outcomes will be achieved including increased attainment and improved post-school positive destinations. It is further envisaged that the school's physical design will be developed in such a way that there will be a positive impact upon the mental health and emotional wellbeing of both staff and young people, engendering a calm and purposeful environment for learning.
- 1.3.4 Co-located curriculum areas will increase and improve opportunities for inter-disciplinary learning. Such adjacent learning areas will facilitate natural cross-curricular links for staff and young people - some of which are not possible due to the existing layout and configuration of both schools' buildings.
- 1.3.5 A well-equipped and modern digital learning environment will be carefully designed to support learners and learning and promote senior phase pathways which stimulate skills for learning, life and work. Accommodation will endorse and extend established educational partnerships with Dundee and Angus College, Michelin Skills Centre/Innovation Parc and Dundee Schools Music Theatre, enabling wider access to facilities and supporting the flexibility of service delivery.
- 1.3.6 The new combined staff team will provide augmented knowledge, expertise, specialism, skills, talents and interests to support learning. A larger team will be instrumental in providing enriched learning experiences for learners including a significantly broader and diverse curriculum and greater personalisation and choice for pupils through varied pedagogy. In tandem with this, increased scope and flexibility in staffing will result in increasing the availability and breadth of National Qualifications including those at Advanced Higher level. Currently, consistently maximising pupil subject choice is a challenge within the senior phase (S4-S6) for both schools due to low pupil and staff numbers.
- 1.3.7 Data would indicate a growing number of young people with significant and complex additional support needs within the east of Dundee. Where possible, the Children and Families Service endeavours to provide educational provision for such young people within a mainstream environment within their local community. Craigie High School currently provides enhanced support for pupils who have a range of complex needs including Autism and those who are deaf or have a visual impairment. Staff from the Accessibility and Inclusion Service (AIS), provide specialist support to staff and pupils in order for the learning environment to be fully accessible for pupils who have such barriers to learning and communication.
- 1.3.8 The AIS supports pupils across the city, including Braeview Academy. It is envisaged that a new single school campus would further integrate this specialist support. The inclusion of bespoke pupil support areas, including sensory enhanced support, will further enhance the integration and quality of service provision, strengthening existing partnership working within the Children and Families service, external agencies and third sector partners.
- 1.3.9 Catchment primary schools across both clusters have Enhanced Support Areas to support a diverse range of young people's needs including Autism, deafness and visual impairment. Continuity of this support and planning through effective transitions will be of significant educational benefit - especially for deaf pupils who use British Sign Language (BSL) as their first language and currently have a small number of BSL-speaking peers within their community.
- 1.3.10 Both existing school buildings present accessibility and suitability issues which continue to be a barrier to young people - including those with complex and additional support needs. A new purpose-built facility will overcome these issues, providing a suitable environment to assist them in accessing appropriate educational experiences (including senior phase educational experiences) and promoting accessible inclusive learning spaces which will meet the needs of all learners and comply with the council's Accessibility Strategy and the Equality Act (2010).
- 1.3.11 As an integral feature of the new school, It is planned to build a senior phase education centre for young people with complex and additional support needs. This will deliver core skills within

an accredited pathway and provide a supportive link into work experience, college courses and the development of independent living skills. Provisional discussions with Dundee and Angus College demonstrate a strong commitment and shared aspiration to exploring on-site partnership. This facility will be jointly designed and delivered between school and college staff, thus strengthening all aspects of the transition process: assessment, planning, pupils' experience and longer-term outcomes ultimately resulting in improved life chances, choices and vocational opportunities.

- 1.3.12 The combined rolls of the two school communities will afford pupils the opportunity to widen their network of friends. The fostering of new pupil relationships will enhance young people's personal and social development, creating a sense of place and identity through increased ownership and opportunities to build their leadership capacity. Significantly, in the aftermath of the Braeview fire and resultant temporary relocation of Braeview pupils to Craigie High School, both schools have already experienced a successful fusion of their respective pupil cohorts and experienced the resultant benefits.
- 1.3.13 A new school/community learning campus within the east of Dundee will provide rich opportunities for citizens to engage in an extended range of cultural, learning, leisure and sporting activities within their immediate community and include wide diversionary Youth Work programmes in the evenings and weekends. Such an approach is entirely consistent with the Children and Families Service philosophy where schools are perceived as publicly owned assets designed to serve the needs of learners and communities.
- 1.3.14 Key to the consultation process was the gathering of citizens views on the requirements and nature of the new school/learning hub. It is recognised that any new build will need to compliment and extend existing resources whilst avoiding unnecessary duplication. An evaluation of existing resources and needs assessment was, therefore, integral to the consultation process.
- 1.3.15 Many services offered within the proposed locality are community led and target those in the most deprived areas of SIMD. It is envisaged that locating the school at the heart of the community will provide a central hub which will contribute to improving people's health and wellbeing. The facility will provide necessary accommodation for children and family support services which is local, accessible and deliverable in partnership with a local management group, providing excellent all-day community access for families and the wider community.
- 1.3.16 Existing opportunities for parents and carers to be involved in their child's education will widen through a range of home and school engagement activities and facilities aimed at supporting their child's learning. As at present, parents will continue to have the opportunity to participate within the school's Parent Council.
- 1.3.17 Recent engagement by council officers and Dundee learners with Dr Stephen Heppell, evidenced that light, paint and Co2 levels are enormously important in learning spaces. Significant improvements can be made to the learner's experience through careful consideration of the size of windows, circulation of air, use of colour and type of light used to create a suitable ambiance and environment which enables everyone to engage appropriately in learning. In conjunction with this, the application of passive house (Passivhaus) rigorous voluntary standard for energy efficiency principles, will reduce the building's ecological footprint. Reduced energy use and carbon emissions will address issues such as the declared climate emergency, resulting from an ultra-low energy building that requires little energy for space heating, cooling and lighting.
- 1.3.18 The movement of the Craigiebarns Primary School catchment to Grove Academy will allow the young people to learn in a large, recently built local secondary school with the benefits of increased curricular provision and choice. This change will also see a far greater portion of the community of the school attending the same secondary school.
- 1.4 As a result of the committee decision, the Executive Director carried out the consultation procedures in terms of the Schools (Consultation) (Scotland) Act 2010 in respect of the

proposal. The consultation programme is detailed in paragraph 2.1 below, and a summary of the main points raised is set out in section 3.

- 1.5 A report from Education Scotland is required under the terms of the Act to address the educational aspects of the proposal. The report is attached as Appendix 2.
- 1.5.1 The report states that, the council believes the proposal to replace the existing Braeview Academy and Craigie High School will bring a number of educational benefits in addition to securing best value. HM Inspectors agree that there are clear potential educational benefits from young people learning in a well-equipped and modern digital learning environment. A larger school should offer a wider range of curricular opportunities and promote further senior phase pathways which develop skills for learning, life and work. Improved accommodation will enable creative approaches to enhancing partnership working with, for example, Dundee and Angus College, Michelin Skills Centre/Industrial Park and Dundee Schools Music Theatre. New facilities will provide improved accessible and inclusive learning spaces which better meet the needs of all learners. The inclusion of bespoke pupil support areas, including sensory enhanced support, has the potential to improve experiences for young people with additional needs.
- 1.5.2 All stakeholders who met with HM Inspectors agreed with both aspects of the proposal. They agreed with the closure of both secondary schools and the building of a new school as well as expanding the catchment area for Grove Academy to include the current catchment area for Craigiebarns Primary School. Stakeholders recognise the range of advantages a new purpose-built school would bring for learners in terms of digital learning, specialist classrooms, flexible learning spaces and common areas. All stakeholders were positive about the wider curriculum a larger school could offer including enhanced links with the local college and other partners. They acknowledged the benefits to the community in having access to facilities at the new school beyond school opening hours. A few stakeholders expressed concern about the accessibility of public transport from some areas of the catchment, about safe routes to school and about the possibility of flooding around the site of the proposed new school. The report concludes that;
- “HM Inspectors agree that the two aspects of the proposal have the potential to bring clear educational benefits for the children and young people in the area. In relation to the proposed new secondary school, whilst all stakeholders who met with HM Inspectors agree, a few also raised concerns about transport, safe routes and the potential for flooding at the proposed site. Should the proposal go ahead, the council should continue to work with the community to provide re-assurance and seek solutions, where appropriate. In relation to the proposal to change the catchment area of Grove Academy to include Craigiebarns Primary School, stakeholders are in favour of this, but a few would like re-assurance regarding the position of siblings whose older brothers or sisters attend Craigie High School”.* (Appendix 2; Education Scotland report, page 3.)
- 1.5.3 The Executive Director has carefully considered the implications arising from stakeholders from the consultation process in general and the Education Scotland report - in particular, where the report highlights specific issues raised during the consultation period. It should be noted that the report and the general response to the proposal was very positive. Having reviewed the proposal in the light of the representations and the Education Scotland (HMIE) report, it is clear that the highlighted issues were either identified in the proposal or are referred to directly in this consultation report.

2.0 CONSULTATION

- 2.1 Consultation was undertaken between 10 February 2020 and 27 March 2020.

The formal consultation procedure included:

- giving notice of the proposals to the Parent Council of the affected schools (10 February 2020)

- giving notice of the proposals to the parents of pupils at the affected schools, and the parents of pupils expected to attend the affected schools within two years of the date of publication of the proposal paper (10 February 2020)
 - giving notice of the proposals to the pupils at the affected schools (10 February 2020)
 - giving notice of the proposals to the staff at the affected schools (10 February 2020)
 - giving notice of the proposals to Trades Unions representing staff at the affected schools (10 February 2020)
 - giving notice of the proposals to relevant Community Councils (10 February 2020)
 - giving notice of the proposal to Local Community Planning Partnerships (10 February 2020)
 - publication of the proposal on the Dundee City Council website (10 February 2020)
 - an announcement of the proposal in the local press and relevant social media, inviting any person to make written representation to the Executive Director (10 February 2020)
 - public meetings in the local area (5, 11, March 2020)
 - Online engagement took place during a 3-week period between 17 August to 4 September 2020 following the consultation pause on 20 March 2020 resulting from the COVID-19 pandemic.
- 2.2 A summary note of all meetings held during the consultation period outlining questions asked is attached as Appendix 3 and the Children and Families Service responses have been added.
- 2.3 Visual and written descriptions of the proposed new boundaries are outlined in Appendix 4.
- 2.4 Twenty-four representations were received on the proposal during the consultation period. These responses were mainly positive, however, a few raised concerns about transport, safe routes and the potential for flooding at the proposed site. In relation to the proposal to change the catchment area of Grove Academy to include Craigiebarns Primary School, there was a mainly positive response to the proposal. A few stakeholders sought re-assurance concerning sibling transitions, priority status and also the possibility of an earlier implementation date. A thematic summary of written submissions received from parents/carers, citizens and organisations from Dundee is attached as Appendix 5.
- 2.5 In accordance with the Schools Consultation (Scotland) Act 2010, copies of all written representations and 'Frequently Asked Questions/Comments' were required to be submitted to HMle for their consideration in the preparation of their report.

3.0 MAIN ISSUES ARISING FROM THE CONSULTATION, WITH RESPONSES

3.1 The main issues of note arising from the consultation were:

- *Transition and support of pupils and staff*
- *Identity, Name and Uniform*
- *Travel concerns - including environmental issues*
- *Site and location*
- *Community buildings and capacity*

3.1.1 Transition of pupils and staff

Consultees raised concerns regarding the transition of pupils to a much larger building and what measures would be put in place to reduce anxieties around this. In addition, parents with children at Craigiebarns Primary School were anxious that, because of boundary changes, any sibling not yet at secondary school may not be able to obtain a place at the combined campus and, therefore, their family would be split between schools.

A few issues were also raised regarding what planning and support would be available during the transition from two school communities to a single school community.

Consideration has been given for the planned build. While being a larger building, it could be designed in zones giving an impression of smaller sections within a school. This would allow staff and pupils to form identities with specific parts of the building where their natural interests and skills lie. Teachers would work closely within these areas with linked subjects allowing better interdisciplinary learning to take place.

A comprehensive transition programme would be put in place for pupils and staff building on the extensive programmes already in place within both schools. Within this process, pupils' potential anxieties and additional needs are taken into consideration and specific programmes for enhanced transition developed. The brand-new facility would greatly enhance support for all young people, including those with Additional Support Needs and this is clearly set out in the Educational Benefits Statement in the proposal paper. The combined and greater number of staff would provide an increased pool of expertise and greater resilience to provide the support all young people require.

In addition, it is proposed that those families with siblings residing within the Craigiebarns catchment area whose designated secondary school is to become Grove Academy but who make a placing request to attend the new community campus will be given priority 1 status as long as the older sibling continues at the new community campus at the point of enrolment of the child in respect of whom the placing request is made. This arrangement will continue for a period of six years from the projected opening of the new community campus to ensure, if the proposal is agreed, that siblings would not be split between schools contrary to the wishes of their family.

The early establishment of a curriculum framework for the new school would inform an audit of staff requirements (teaching and support staff) for the effective delivery of the curriculum within the new school. Throughout the development process, where possible, staff from both schools would be working together developing the curriculum and, as increased opportunities arise to work together, they would form a new staff team. The success of the collegiate working during the Braeview decant to Craigie following the fire, demonstrated their co-operation, willingness and success as one team. As vacancies arise through the transition period, where possible, staff could work across both schools and contribute to the ongoing process of building a new collective staff team. The final staffing allocation will be determined by the Dundee City Council staffing formula upon opening, based on the school roll and curricular offer. The attractiveness of the new campus, opportunities to expand the curriculum, as well as staff feedback throughout the consultation, anticipates staff being very supportive of working within the new community school.

3.1.2 Identity, Name and Uniform

A number of questions were asked around what work would be undertaken to ensure all relevant people within both school communities have the opportunity to contribute to the development of the new school identity, name and uniform.

The project team and officers across the city would utilise their previous experience gained from successfully bringing together the Harris and Menzieshill school communities. Staff and pupils from both school communities would be involved from the planning and development process to completion by having representation on a dedicated project board. There would be regular scheduled communication with all involved in the process and decisions on these key features would be taken within a spirit of transparency and openness.

Throughout the development process, regular consultation would take place regarding any emerging issues and both communities would contribute to the evolving identity of the school, the design, name, uniform and the daily routines and policies. The senior leadership teams from both schools would work closely together with the staff, pupils and parent councils to ensure their voices are heard. In preparation for any transition to the new school, school

leadership teams from both schools would engage in a joint process of curricular and school improvement planning.

This process would start as early as possible and would be a regular feature to ensure as smooth a transition as possible.

3.1.3 Travel concerns including environmental issues

A number of responses received raised concerns around the distance from and travel to school - including the modes of transport and potential problems created by increased congestion within the Drumgeith road area and what measures will be taken to mitigate these issues.

Dundee City Council is already very aware of this and acknowledged the action that would be taken in the original proposal paper.

The proposal, if agreed, would impact on transport and travel arrangements for families of children currently attending both Braeview Academy and Craigie High School. Accordingly, a traffic impact assessment of the area within the planned works would be undertaken to assess the most suitable ingress and egress from the proposed site to provide relevant and safe access. Plans formulated from the assessments would ensure a suitable road infrastructure including drop off/pickup points, cycle storage, footpaths and cycle paths as well as, where necessary, any traffic calming measures. Engagement would also be undertaken with bus operators to provide appropriate routes to serve the school catchment area. These revised travel networks would increase the choice and flexibility of travel methods. The issues described above are standard practice for any new school build process.

It is also important to note that, based upon the current pupil population, for the majority of pupils the average journey to a new campus at Drumgeith road would be shorter than to their current buildings and this should encourage active travel.

The proposal outlines that, if approved, the campus would not be completed for approximately another 4 years. This important aspect of the consultation will be a core task for the Project Board where parents, staff and the wider community will be able to work directly with Dundee City Council City Development Officers to look at how these issues may be resolved.

If the proposal is approved, a travel plan for the new school would be developed and this process would allow pupils and parents to engage in the planning of safer routes to school. This will help to promote the wellbeing of children and families whose route to school will be altered as a result of the location of the proposed new campus.

3.1.4 Site and location

A small number of responses raised specific concerns regarding the historic flooding of the proposed location.

The council have reviewed the historical and projected flooding data for the proposed site and surrounding area, with an initial flood risk assessment having been carried out. Predicted flooding issues will be addressed through the planning and detailed design development stages. There are no major issues identified.

Site zoning designed to ensure building location and ground levels are reflective of the flooding assessment data. Buildings will be located to the north west of the site clear of any predicted 1:1000-year flood extents.

Dundee City Council commissioned Fairhurst to undertake detailed flood assessment of the site and modelling of the Dighty Burn, an extract from the report is attached as Appendix 6.

3.1.5 Community Buildings and Capacity

Concerns were shared from a number of stakeholder groups regarding their input to the building and a building of this scale's ability to function as a community asset and meet the needs of the community it serves. Concern was also raised re capacity issues at Grove Academy and if the move of Craigiebarns Primary into the Grove Academy catchment area was feasible.

In relation to the size of the school, both the current schools were built to accommodate over 1000 pupils. It is anticipated that, when both schools come together, the pupil population will be 1582 pupils in session 2024/25. Although this is a larger pupil population than the schools currently experience, there are other schools across Scotland that operate comfortably at this or even higher levels. Larger schools have greater numbers of staff and larger management ratios to allow for the smooth running of the school. All schools are supported to ensure a community approach and ethos within the school and being part of a campus will allow for closer partnership working across the local community.

Projected rolls for Braeview Academy, Craigie High School, new Craigie-Braeview school and Grove Academy, including new house building. Figures for 2020-2024 are based on current catchment arrangements. Figures for 2024 onwards are based on proposed catchments.

	Braeview Academy	Craigie High School	Total	Grove Academy
2020/21	651	694	1,345	1,288
2021/22	704	750	1,454	1,318
2022/23	751	777	1,528	1,341
2023/24	772	809	1,581	1,339
	New Craigie-Braeview			
2024/25	1,582			1,357
2025/26	1,546			1,351
2026/27	1,492			1,338

Community campus provisions have demonstrated that they are more than just a school and are a focal point within the heart of the community. A new community campus is for the involvement of all pupils, parents, staff and the wider community to create a unique community and ethos and deliver an asset which delivers relevant services throughout the day, every day.

It is essential that the community are involved in the design and development of the building accommodation and its function as they will undertake a proportionate role in service delivery within the campus to meet the wider community needs and maximise the opportunities to deliver existing and evolving support networks.

Secondary school roll projections are based on existing primary school pupil information (school attended and home address) combined with programmes for new house building. Existing primary school rolls allow secondary school roll projections to be made for the next seven years i.e. until the current P1 stage starts secondary school. Pupils with Priority 1 status for secondary school are determined by their home address. Pupils with Priority 3 status are determined by matching home addresses with existing secondary pupils to identify siblings.

Whilst families will move during the next seven years, it is expected that the net effect of families moving in and out of existing housing in a catchment will be around zero. To factor in the contribution that new housing development could make to a catchment population, the Housing Land Audit is used to determine the likely number of new residential units to be built each year. To allow for variance in the make-up of families occupying new developments, low

and high estimates of children and young people per property are applied to these developments to indicate their contribution to future school rolls.

Further projection and analysis has been undertaken in relation to the roll of Grove Academy. The table below demonstrates that, it is both feasible and possible to implement the change to the Grove Academy catchment area in August 2025.

	P1	P2	P3	P4	P5	P6
S1 intake	Aug-27	Aug-26	Aug-25	Aug-24	Aug-23	Aug-22
Barnhill	58	46	62	60	62	71
Eastern	33	41	23	37	33	25
Forthill	65	60	67	81	67	89
Grove priority 1	156	147	152	178	162	185
Craigiebarns	27	37	36	31	43	35
Grove + Craigiebarns	183	184	188	209	205	220
Siblings (Priority 3)	1	3	1	6	5	14
Spaces in S1 240 capacity	56	53	51	25	30	6

4.0 THE SCHOOL PREMISES (GENERAL REQUIREMENTS AND STANDARDS) (SCOTLAND) REGULATIONS 1967

4.1 The proposal meets the requirements of the above Act and, accordingly, the Executive Director is not required to apply to Scottish Ministers for dispensation from the standards.

5.0 CONCLUSION AND NEXT STEPS

5.1 Having reviewed the Education Scotland Report and looked at the consultation responses in detail including those issues raised at the public meeting, it is recommended that the proposal should go forward with a revision to the planned opening of the Community Campus and expansion of the Grove Academy catchment area to embrace Craigiebarns Primary School to August 2025 due to consequential delays arising from the COVID-19 Pandemic.

5.2 It is proposed that those families with siblings residing within the Craigiebarns catchment area whose designated secondary school is to become Grove Academy but who make a placing request to attend the new community campus will be given priority 1 status as long as the older sibling continues at the new community campus at the point of enrolment of the child in respect of whom the placing request is made. This arrangement will continue for a period of six years from the projected opening of the new community campus to ensure, if the proposal is agreed, that siblings would not be split between schools contrary to the wishes of their family.

5.3 Should the project go ahead, a full transport assessment will identify travel and traffic issues associated with the new site and will focus on improving walking and cycling routes to the school and community campus. Suitable infrastructure may be proposed and stakeholders will be consulted on designs.

5.4 As this proposal relates to the closure of a school, the council must notify Scottish Ministers within six working days after taking its decision of any decision to close a school. Dundee City

Council must also publish on its website the fact it has notified Scottish Ministers of this decision and the period in which consultees have the opportunity to make representations to Ministers asking for the proposal to be called in. Ministers have the power to call in a proposal, but only where it appears to Ministers that the council has failed in significant regard to comply with the Act's requirements or, in coming to its decision, has failed to take account of material consideration relevant to the proposal. Ministers have up to 8 weeks from the date of the council's decision to decide whether or not to issue a call-in notice.

Paul Clancy Executive Director of Children and Families Service

November 2020



Schools (Consultation) (Scotland) Act 2010

Report by Education Scotland addressing educational aspects of the proposal by Dundee City Council to the closure of Braeview Academy and Craigie High School and the re-delineation of existing school catchments to form a new single catchment area for a new joint secondary school/community learning campus from August 2024; and the expansion of the catchment area for Grove Academy from August 2024 to embrace the current Craigiebarns Primary School catchment area.

October 2020

Introduction

- 1.1 This report from Education Scotland has been prepared by Her Majesty's Inspectors of Education (HM Inspectors) in accordance with the terms of the [Schools \(Consultation\) \(Scotland\) Act 2010](#) ("the 2010 Act").

The purpose of the report is to provide an independent and impartial consideration of Dundee City Council's proposal to close Braeview Academy and Craigie High School and re-delineate existing school catchments to form a new single catchment area for a new joint secondary school/community learning campus from August 2024; and expand the catchment area for Grove Academy from August 2024 to embrace the current Craigiebarns Primary School catchment area. Section 2 of the report sets out brief details of the consultation process. Section 3 of the report sets out HM Inspectors' consideration of the educational aspects of the proposal, including significant views expressed by consultees. Section 4 summarises HM Inspectors' overall view of the proposal. Upon receipt of this report, the Act requires the council to consider it and then prepare its final consultation report.

The council's final consultation report should include this report and must contain an explanation of how, in finalising the proposal, it has reviewed the initial proposal, including a summary of points raised during the consultation process and the council's response to them. The council has to publish its final consultation report three weeks before it takes its final decision. Where a council is proposing to close a school, it needs to follow all statutory obligations set out in the 2010 Act, including notifying Ministers within six working days of making its final decision and explaining to consultees the opportunity they have to make representations to Ministers.

- 1.2 HM Inspectors considered:

- the likely effects of the proposal for children and young people of the schools; any other users; children likely to become pupils within two years of the date of publication of the proposal paper; and other children and young people in the council area;
- any other likely effects of the proposal;
- how the council intends to minimise or avoid any adverse effects that may arise from the proposal; and
- the educational benefits the council believes will result from implementation of the proposal, and the council's reasons for coming to these beliefs.

- 1.3 In preparing this report, HM Inspectors undertook the following activities:

- consideration of all relevant documentation provided by the council in relation to the proposal, specifically the educational benefits statement and related consultation documents, written and oral submissions from parents and others; and
- virtual visits to the site of Braeview Academy, Mill of Mains Primary School, Craigie High School, Claypotts Castle Primary School, Grove Academy and Craigiebarns Primary School including discussion with relevant consultees.

Consultation process

- 2.1 Dundee City Council undertook the consultation on its proposal(s) with reference to the [Schools \(Consultation\) \(Scotland\) Act 2010](#).

- 2.2 The consultation process began on 10 February 2020 and was due to end on 27 March 2020. With schools across the country closing as a response to the spread of Covid-19, the council was unable to complete the consultation within the proposed timescale. The council extended the period of consultation with a revised closing date of 4 September 2020. The proposal has two aspects:- the closure of Braeview Academy and Craigie High School with a new purpose

built school to replace these; and secondly a change to the catchment area for Grove Academy. A public meeting was held on 5 March 2020 where six stakeholders attended. The council received responses from 24 stakeholders. Half (12) agreed with the proposal, a third (eight) had questions about the proposal and the remaining four stakeholders disagreed. In order to seek the views of stakeholders prior to the national lockdown, the council held a number of consultation sessions with stakeholders from six schools. These included parents, children and young people. The responses were largely positive. During the period of extension to the consultation, weekly online feedback to stakeholders' questions were published on the council's website on the 24 August, 31 August and 7 September 2020.

Educational aspects of proposal

- 3.1 The council believes that the proposal to replace the existing Braeview Academy and Craigie High School will bring a number of educational benefits in addition to securing best value. HM Inspectors agree that there are clear potential educational benefits from young people learning in a well-equipped and modern digital learning environment. A larger school should offer a wider range of curricular opportunities and promote further senior phase pathways which develop skills for learning, life and work. Improved accommodation will enable creative approaches to enhancing partnership working with, for example, Dundee and Angus College, Michelin Skills Centre/Industrial Park and Dundee Schools Music Theatre. New facilities will provide improved accessible and inclusive learning spaces which better meet the needs of all learners. The inclusion of bespoke pupil support areas including sensory enhanced support has the potential to improve experiences for young people with additional needs.
- 3.2 All stakeholders who met with HM Inspectors agreed with both aspects of the proposal. They agreed with the closure of both secondary schools and the building of a new school as well as expanding the catchment area for Grove Academy to include the current catchment area for Craigiebarns Primary School. Stakeholders recognise the range of advantages a new purpose-built school would bring for learners in terms of digital learning, specialist classrooms, flexible learning spaces and common areas. All stakeholders were positive about the wider curriculum a larger school could offer including enhanced links with the local college and other partners. They acknowledge the benefits to the community in having access to facilities at the new school beyond school opening hours. A few stakeholders expressed concern about the accessibility of public transport from some areas of the catchment, about safe routes to school and about the possibility of flooding around the site of the proposed new school.
- 3.3 Staff in all schools that received a virtual visit agreed with other stakeholders in terms of the advantages for children and young people as well as the community in general. They also welcomed the opportunity to work in collaboration with colleagues in a larger school and cluster. They felt this would provide rich opportunities for collaborative learning, planning and moderation.
- 3.4 The movement of the Craigiebarns Primary School catchment to Grove Academy will provide certainty for parents who have made the choice to send their children to Grove Academy. Young people will have access there to a modern learning environment and a wide curriculum. They will no longer need to wait for the outcome of placing requests. For children too, there is re-assurance that they will be able to move with their classmates to the same school. Children from Craigiebarns Primary School whose older siblings attend Craigie High School would like to be guaranteed a place in the new school.

Summary

HM Inspectors agree that the two aspects of the proposal have the potential to bring clear educational benefits for the children and young people in the area. In relation to the proposed new secondary school, whilst all stakeholders who met with HM Inspectors agree, a few also raised concerns about transport, safe routes and the potential for flooding at the proposed site. Should the proposal go ahead, the council should continue to work with the community to provide re-assurance and seek solutions where appropriate. In relation to the proposal to change the catchment area of Grove Academy to include Craigiebarns Primary School,

stakeholders are in favour of this, but a few would like re-assurance regarding the position of siblings whose older brothers or sisters attend Craigie High School.

HM Inspectors
October 2020



School Estate Proposals

FORMAL CONSULTATION ACTIVITY

**Engagement Sessions with Braeview Academy Staff
Venue : Braeview Academy**

31st August 2020 4pm

Officers: Audrey May, Chief Education Officer (AM), Gordon Laidlaw, project officer (GL), Helen Gray, Education Officer (HG) (note taker).

Other Attendees: Kenny Clarkson, DHT Braeview Academy (KC)

5 individuals attended the session, those represented were **staff**

All conversations during the session took place in relation to Children and Families Service school estate proposals, of which formal consultation is being undertaken between 10th February and 27th March 2020. (extended during Aug 17th – September 4th 2020)

The Meeting was conducted via MS Teams, All schools staff were assembled (physically distanced) in the school conference room and engaged via video link.

Key observations/concerns raised:

At the start of the meeting AM thanked the schools staff for their attendance and stressed the importance of their views being expressed and shared with the Scottish Government.

AM presented the content within the PowerPoint presentation outlining the rationale for the proposal, the changes to catchment areas, predicted school rolls and the vision for the new school. She outlined the next steps would be to work with staff in both schools over time to develop the design, ethos, and identity. There were no questions.

Gordon Black, staff member, P.T. Modern Studies and E.I.S rep was, unfortunately unable to access the meeting however, following receipt of the presentation, posed the following question:

One question I may have asked last night, although I'm sure there will be many, is in reference to the final bullet point Slide 9 which reads:

• Critically, early engagement will focus on the structure of the amalgamated school community and implications related to staffing models.

Can I ask you to detail exactly what this bullet point means particularly in relation to words "implications related to staffing models."

The following reply was provided:

If the proposal goes ahead, Children and Families Service would wish to start working with both Braeview Academy and Craigie High School to understand the needs of the new school in relation to Staff and pupil ratios. Through the staffing formula this would enable us to understand what the staffing compliment would be and in which departments. In addition to this, it is hoped that the middle management structure would be implemented within each school and it is important that this is done in a collaborative way as at a future date two staffing compliments will become one.

Following the presentation the forum was opened for discussion and questions however there were none put forward. Everyone reminded of the opportunity to respond by the 4th September.

It was agreed that the presentation would be shared with Mr K Clarkson Depute Head Teacher who would put it out to all staff for any comment or response.

AM thanked everyone for listening and attending, Meeting closed at 4:35pm

School Estate Proposals

FORMAL CONSULTATION ACTIVITY

Engagement Sessions with Parent Council Venue – Braeview Academy

12 March 2020 7pm

Officers: Danny Webster, Education Manager (DW), Gordon Laidlaw, project officer (GL), Debbie Gallacher, Education Officer (note taker)

Other Attendees: Lesley Elder, HT Braeview Academy (LE)

4 individuals attended the session, those represented were ~~staff/pupils/parents/carers.~~

All conversations during the session took place in relation to Children and Families Service school estate proposals, of which formal consultation is being undertaken between 10th February and 27th March 2020.

Key observations/concerns raised:

At the start of the meeting, DW thanked the parents for their attendance and stressed the importance of their views being expressed and shared with the Scottish Government.

GL articulated the proposal for the community campus and the consultation process involved. He presented two maps, one showing the current catchment area and a second showing the proposed new boundaries. He explained the campus model i.e. the dual education and community elements and how families and communities would play a central role in discussions around the design and facilities.

Rationale

Question Wanted to know why this decision has been made now.

Answer *Both schools have been assessed as category C i.e. in poor condition. The continued use of the porta cabins is not a viable long term option. A community learning campus would come from public money and be a public asset.*

This campus would represent a state of the art, 21st century, high quality learning facility for the community in the east of Dundee.

Question Would like local contractors to be used in the construction of the building

Answer *Part of the agreed approach is that the appointed contractors work with local companies and employers, Sustainable growth is part of the outcomes within the government strategy and this needs to be met as part of the project.*

Education v Community

- Question Concerned the educational element will be on the back burner in favour of the community element which may have a charge.
- Answer *The educational provision will be of as high a standard as possible. Careful consideration will be given by the architectural team to the design of the building to suit the needs of the young people within, as well as the element which would also be designed to meet the needs of the community.*
- Question Concern a large school will overwhelm young people
- Answer *The design of the school can be such to reflect that of a smaller school with a series of buildings to avoid the structure being too large or imposing.*
- Question Recruitment of staff
- Answer *The expectation would be this campus would be an attractive proposition for staff.*
- Question Safety and security of pupils with the community element e.g. Would pupils witness inappropriate incidents?
- Answer *The school would have perimeter fencing, internal fobs and timed lockdowns - there are some very good existing examples of new builds from which intelligence can be drawn.*
- Question Would the school benefit from the community leases?
- Answer *There would be a lot of potential to work with other groups and organisations, bring people together and build community. Council officers agreed the importance of making available facilities and opportunities explicit to the community.*
- Question Would like facilities/opportunities within campus made explicit to families so they know what's available
- Answer *Family engagement and learning is important to both current school communities and something which the school would wish to continue and encourage, facilities would be design with this in mind.*
- Question Parents request an August opening rather than a mid-session start
- Answer *Totally agree an August start would be the best option as this would minimise any disruption due to the summer holidays and not impact upon pupils during exam time.*

Location

- Question Traffic is often gridlocked around this area, the road isn't wide enough for cars to park and the area is already very congested and dangerous
- Answer *Council officers agreed all those involved in the proposal and potential build should take cognisance of the traffic implications and travel planning for the school. This will form a considerable part of any future engagement if the project goes ahead as traffic calming to promote pupil safety around the campus is a paramount.*
- Question Concern expressed for the wildlife in the area
- Answer *The proposed location is equidistant from both current schools. Contractors are sensitive to the wildlife around a building area, they will also consider how to improve greenspace.*

Question Concern around suitability of the ground due to the waterline

Answer *Flood assessment has been carried out and further relevant actions will be undertaken to support the proposal, the proposed new school will not have a basement and would be built above the waterline.*

Facilities and Resources

Question A guarantee children will get the best facilities and resources, changing cubicles rather than dressing rooms? consideration given to LGBT groups.

Answer *The proposed campus would contain new, up to date facilities and equipment, using the cutting edge technology. Outcomes which need to be met as part of the funding outcomes include digital infrastructure There would be the potential to have IT access within the campus out with the school day.*

Question Want a guarantee there will be facilities to support ASN and disabled access.

Answer *Consideration of changing room requirements and ensuring the campus had suitable facilities for ASN, pupils and adults would be part of the planning process. Many elements of this have been reflected in the proposal paper.*

Question We want a guarantee that teachers will be consulted as to the design, facilities, resources

Answer *All relevant stakeholders for example, staff, pupils, parents, partners and community will be involved in any potential design development of a new facility, this is critical to the outcome of any new building if it is truly to embrace the concept of a community campus thus enabling ownership of their community resource.*

Question Want reassured the building will be large enough to accommodate increased roll.

Answer *A projection of the anticipated school roll has been carried out and the school will have a projected roll of no more than 1582, but a capacity for 1879 pupils, this will not only help reduce any concerns of the building being too busy or full but also allow it to cope with any future increase in roll resulting from a population increase within this part of the city.*

Question Concern around expected use of technology when pupils might not have any at home

Answer *By the very nature of the building being designed to meet the needs of the community, accessible resource will be built in to support any resourcing need/requirement by families within the locality. This may for example be in the form of a school library which is accessible by young people and their families either during or after school hours to support family learning or homework.*

Question (One parent) I like the idea of the school having an outdoor amphitheatre

Answer *All suggestions as to what the community may like or need would be considered, Outdoor learning is very much at the heart of current learning approaches and strategy.*

In conclusion:

Parents were all in agreement that, if this was done properly, it would be a good thing and recognised the benefits i.e.

- Benefits for learning - a wider curriculum, greater choice;
- Improved transition links between school and college;
- Links with local community businesses;
- Employment opportunities for young people;
- STEM,(Science, technology, Engineering & Maths), innovation projects;
- Opportunities for Family Learning and supporting parents with their own education, night classes;
- Bespoke facilities for ASN pupils to support inclusion and transition.

DW thanked all for attending and sharing their views. He concluded the discussion with a summary and reiterated the benefit in terms of what he sees as the 4 'C's':

Condition – going from a grade C to grade A building

Cash – by doing something different there will be government funding to ensure something better

Climate – improved environment for learning

Curriculum – a broadened and diversified curriculum – more staff/more classes/ better learning.

The meeting ended at approximately 7.45pm

School Estate Proposals

FORMAL CONSULTATION ACTIVITY

Engagement Sessions with Braeview Academy S1 & Pupil Voice
Venue : Braeview Academy

4th March 2020 8.50am

Officers: Verity Scott, Senior Officer Locality West, Gordon Laidlaw , Project Officer
Other Attendees: None

33 attended the session, those represented were ~~staff/pupils/parents/carers~~, 30 S1 pupils split into two sessions, 15 in each. They were support by 3 senior pupils including the Head Girl.

All conversations during the session took place in relation to Children and Families Service school estate proposals, of which formal consultation is being undertaken between 10th February and 27th March 2020.

Key observations/concerns raised:

What do you know

- Where it will be built, Where is it was going to be? Don't know where it is!
- By Drumgeith road
- The idea of it, It might be happening, Will be in 2024– far enough in the future
- We will be in 6th year
- Schools were maybe coming together, Merger plans
- New school, More Pupils
- Better education, more subjects, more options
- Don't need to go up the brae
- Lots of cars

What do you think

- We need a new school
- Good because we wouldn't be in portacabins, Portacabins short term solution
- Not knowing how to go round the school will be hard
- It will be good to have extra choices
- Concerned there will be fights
- Challenging moving to another school, lots of change, Stressful for us as 6th year new school, new school, teachers, resources while sitting exams. Will distract us.
- Chance to meet new people
- Would be a big range of facilities in a bigger school which would be good
- Wide range of subjects
- Unsure
- Less opportunities
- Fights, Risky mixing young people from different schools, would eventually settle down but might take a few years
- Not as good as just Braeview
- Smaller school is better

- Bigger school, more friends/meet more new people.
- Less spaces in sports teams
- Fear of not getting Braeview teachers
- New teachers in senior phase would be hard – build up relationships with teachers
- More activities, more course choices
- More opportunities at lunchtimes
- Closer to walk to school, Closer to house
- Already experiences merger in primary school
- Better equipment/resources including toilets and social area
- Improve attendance
- Different choices for lunch – have own kitchen so better food
- New equipment/resources – new toilets /social and lunch area
- Getting to and from school – traffic/buses
- New people would make us anxious

What would you like to happen

- A new school - Merge school – new opportunities
 - Big school
 - Get away from portacabins
 - Get to know new people
 - Bigger clubs
 - Better equipment
- Built 2 new schools – want a new school but not a merged schools same as local Longhaugh and St Francis, Not merge school – lots of fights?
- Schools should get joined together because fair for both
- Schools both get joined together not separated
- Both schools should get to do clubs together, It would be competitive
- Get more trips / outdoor education, More sports
- Get better pitches
- Proper changing rooms
- Bigger classrooms
- More teachers
- Braeview teachers with Braeview pupils?
- Common rooms?
- Somewhere to go when its cold outside!
- Better equipment
- Getting to choose curriculum, More subject choices, better opportunities
- Rooms for behavioural punishments

What would you like to know

(Answer given by GL/VS italicized below each question)

- Will the school be mixed? Fully merged?
 - Yes
- Will the teachers be the same? What will happen to the teachers?
 - *Yet to be discussed but a lot of staff will be needed to teach and support all the pupils.*
- What will it be called? Uniform?
 - *This will be up to the school community including yourselves*
- Will it have a kitchen for lunches? Canteen size?
 - *Yes it would have a kitchen, school is yet to be designed but canteen would be big enough for the size of school*
- Would it get delayed!
 - *All depends on the outcome of this consultation*
- Would this school be getting knocked down before the new school go built?
 - *NO*
- Updates on progress?

- *Yes we would want pupils involved regularly through the process if it went ahead.*
- What classes we will get?
 - *This would all be decided in the future if the school happens*
- Travelling to school, School bus system?
 - *The consultation report states that travels plans and bus/cycle/walking routes would have to be worked out with local travel companies such as NXD.*
- Craigie High thoughts, teachers thoughts, other pupils thoughts?
 - *We are having similar meetings with them also to get their views on the proposal.*
- How many classrooms?
 - *Enough for up to 1879 pupils*
- Mixed classes?
 - *Yes this would happen if the schools were to merge.*
- Support for moving - tours around new school etc.
 - *Worked well for the new Harris & Baldragon, we would want to do the same, particularly for vulnerable pupils.*
- SFL, Study support?
 - *Essential and part of the work which would be undertaken by school staff.*

All attendees were made aware that their views would be collated into a consultation report to help inform final decisions regarding the proposals. Views out with the meeting could also be shared via email and written response as indicated within the consultation materials to Children and Families Service.

School Estate Proposals

FORMAL CONSULTATION ACTIVITY

Engagement Sessions Braeview Academy Public Meeting
Venue : North East Campus

5th March 2020 7pm

Officers: Audrey May Chief Education Office (AM), Danny Webster Education Manager (DW), Gordon Laidlaw Project Officer (GL), Andy McGregor Education Officer (AMc), Anne Leary Education Officer (note taker)

Other Attendees: None.

6 attended the session, those represented were **parents/carers/members of public**.

All conversations during the session took place in relation to Children and Families Service school estate proposals, of which formal consultation is being undertaken between 10th February and 27th March 2020.

Key observations/concerns raised:

Question Can parents look at the changes to the map and the impact on school catchments?

Answer *Yes, an interactive map is available of the DCC website. Parents can put in their postcode and find out the schools to which they belong.*

Question LCC if school goes ahead – will it have a new identity?

Answer *Brand new identity – part of a community consultation and the views of young people taken into account. Planned well in advance of the school opening.*

Question Kingspark – senior children from that school joining the new school – what will be the impact?

Answer *AM: Capacity issue – so we need to give them wider range of opportunities. Gap appearing in what's available for senior pupils at Kingspark, particularly in relation to transition to college and so provision will be made in the new school. Good partnership with D&A College because some find the transition from Kingspark to college difficult – college staff would work within the SfL provision to support young people to access college learning in a familiar setting. This is still to be finalised but goal is to improve outcomes for those young people. Detail to be worked out. The priority would be getting them onto an appropriate adult pathway.*

DW: Very helpful discussions have taken place between council officers and the college principal, these would be developed further if the proposal was to go ahead.

Question Are there opportunities for community participation?

Answer There will be opportunities for adult /family learning. Building this provision as part of the community. Example : 3-18 Campus in Perth – library was a community in addition to being a school library, the space was shared. Initially some were concerned about how this would work however over time everyone realised the positive impact on children and young people, families and the wider community.. This provision enabled school pupils to work within the community to undertake some of their courses. Pupils then volunteered at weekends and got Saltire Awards as a result. Adult literacy programmes, family learning with parents and the school was also achieved as a result of this shared space.

Question Will new school have swimming pool?

Answer Can't say at present, need still to map this out across the city to see whether or not there is a need, a group is looking at this. Once the decision is made about the school then the planning process takes this into account. E.g. 3G pitch for the community campus – all of this will be mapped out.

Question Worried about ethos and culture a bigger school?

Answer *GL:* Within the planning process the feeling of a smaller school can be captured in a larger building. We need to embrace the excitement from young people with the thought of a new school, its design, what it can offer them.

AM: The more we involve young people in the process, the more they will feel that they belong and have ownership. Schools will help pupils to transition into the new campus – leadership opportunities, the quality of relationships. We look at the bigger picture e.g. impact on the curriculum i.e. Smaller school cannot offer the wider range of subjects and pathways to ensure that all young people have positive destinations. How we work with young people to make this work is important.

Question What was the experience of bring together Menziesshill and Harris pupils?

Answer The council sent out a team of officers to undertake an extended review to evaluate impact of transition approximately a year after the school had opened – young people's resilience helped them to cope – it was no longer an issue. All of the young people saw themselves as one community, large building didn't upset them and all fears dissipated, young people involved in clever design which was unique and appropriate working with young people. Harris example was different to other experiences because the Menziesshill high school seemed to merge so well. Young people mix more across the city nowadays as well as through social media which makes it easier. Used to be much more tribalism in the city but there is less fear as a result of young people accessing the whole city. Young people identified as enjoying the opportunity to come together as one community.

During Braeview fire young people told us that the joint sharing of a school was not an issue, this new building could bring other opportunities such as city music and drama opportunities. Different times now – schemes not limited due to social media. If proposal goes ahead this proposal has four years to do in-depth work with the children, families, community, businesses etc.

Question Will there be differences in facilities across the city?

Answer Currently there is a wide difference in what children experience, you only need to look at these two secondary's compared to the newer building across the city. Equity of provision is the main motivation. When both schools shared Craigie High School after the fire, pupils had already meet each other through DSMT, sports, music etc. they gelled quickly and then organised social events together for everyone including younger pupils which showed a real sense of camaraderie. Adults were more concerned than the young people.

- Question What happens if Scottish Government says no?
- Answer *Some more work is still to be done in the consultation process, focus groups, parent councils and other public meetings, before further reports and involvement of Education Scotland. Then there is a committee following that which review the outcome report and a paper which gives proposals resulting from the whole process. Ultimately our elected members decide, In addition to that producing extensive papers to submit to Scottish Government for funding and meeting key criteria is key to this process, they don't give money to just replace old buildings – has to be something innovative and different. This is the best option to get the funding. It's less likely to be "No" through this mechanism rather than asked to rebuild a new Braeview and Craigie.*
- Question Is there any other site?
- Answer *This is the preferred site – central to the catchment, there are other sites which are less central or offer other problems and issues such as not being able to take a school of this size.*
- Question As well as putting through plans for this development – any plans for two schools in the short term?
- Answer *Planned and ongoing work to both schools will still be required as any new proposed school will not be ready until Aug 2024 at the earliest, the extent to these works required to both school in the meantime would depend on the councils plans and needs of the schools. Both schools will require work until new school is being built to keep it safe and up to at least their current level of condition.*
- Question Will education be disrupted during building and transition to new school?
- Answer *Significant amount of work done to ensure continuity of experience including curriculum, resources. Staff will continue to work collaboratively for a few years prior to new school to ensure smooth transition. Because of the fire the two schools now work collaboratively in any case, they are what is known as School Improvement Partners. They will start to match curriculum well in advance and are already working on shared pedagogy, they would want to avoid any duplication for young people, Same LLCP - joint HWB and safety projects which is Important to get this message across.*
- Meeting closed at 8.10, Mrs May thanked everyone for attending and encouraged them to share any other thoughts or view via the appropriate methods.*

School Estate Proposals

FORMAL CONSULTATION ACTIVITY

**Engagement Sessions with Craigie High School Staff
Venue : Craigie High School**

2nd September 2020 4pm

Officers: Paul Clancy (PC), Gordon Laidlaw, project officer (GL) (note taker).

Other Attendees: None.

1 individuals attended the session, those represented were **staff**

All conversations during the session took place in relation to Children and Families Service school estate proposals, of which formal consultation is being undertaken between 10th February and 27th March 2020. (extended during Aug 17th – September 4th 2020)

The Meeting was conducted via MS Teams, All staff were assembled (physically distanced) in the Heat Teachers office and engaged via video link.

Key observations/concerns raised:

At the start of the meeting, PC thanked the everyone for their attendance and stressed the importance of their views being expressed and shared with the Scottish Government.

GL articulated the proposal for the community campus and the consultation process involved. He talked to a prepared presentation which was shared on-screen and latterly shared the presentation with the Headteacher Andrena Waghorn for all staff.

Consultee's Comments:

A positive move for the school and desperately needed - fully supportive of the proposal. School has been short changed in the past and a new building will help build ethos.

More can be offered by the bigger school, better provision means better opportunities for everyone. It will be Craigie's anniversary on the 4th September, its now 50 years old.

New building will bring school into heart of community.
It brings many combined needs for both schools, pupils and staff.

Expect it will be more accessible for a greater number of pupils.

PC thanked everyone for listening, attending and contributing. Meeting closed at 5.05pm

School Estate Proposals

FORMAL CONSULTATION ACTIVITY

Engagement Sessions with Parent Council Venue – Craigie High School

2 March 2020 6pm

Officers: Danny Webster Education Manager (East), Gordon Laidlaw Project Officer.

Other Attendees: Andrena Waghorn Head Teacher

1 individual attended the session, those represented were ~~staff/pupils/parents/carers~~
All conversations during the session took place in relation to Children and Families Service school estate proposals, of which formal consultation is being undertaken between 10th February and 27th March 2020.

Key observations/concerns raised:

Despite resistance to previous proposal of the two schools coming together, the parent acknowledged the opportunities that the proposal could bring to the young people and wider community of Craigie High School.

The parent appreciated the current condition of the Craigie High School building was poor and pupils and staff would benefit from a new environment, they also appreciated that an increase in pupil population would enable the potential for more subject choice, a wider curriculum and potentially better learning experiences through individual classes (Nat 4, Nat 5 or Higher) rather than composite.

They were keen that pupils, staff and parents would have involvement in other aspects of the process if the proposal was to be agreed. For example, School name, Badge, Uniform and Design of their new school.

School Estate Proposals

FORMAL CONSULTATION ACTIVITY

Engagement Sessions Craigie High School Public Meeting
Venue – Claypotts Castle Primary School

11 March 2020 6pm

Officers: Gordon Laidlaw Project Officer, Fiona Low Education Officer, Angela White Education Officer, Audrey May Chief Education Officer, Andy Macgregor Education Officer (note taker)

Other Attendees: Mrs Gillian McKay Acting Head Teacher

18 individuals attended the session, those represented were **staff/pupils/parents/ carers/members of the public.**

All conversations during the session took place in relation to Children and Families Service school estate proposals, of which formal consultation is being undertaken between 10th February and 27th March 2020.

Key observations/concerns raised:

Question The distance from Grove to the western edge of proposed new catchment is much greater than to some homes remaining in the catchment of the new school e.g. houses on Baldovie Road. Would those who are closer still get into Grove?

Answer *AM - We would apply the placing request guidelines, Priority 1 pupils in the catchment would be given a place and the remaining places would be allocated based up the priority status of the remaining pupils, this means more priority 1 pupils will attend Grove rather than lower priority pupils.*

Question Facilities in both schools are currently good – I hope we won't lose facilities eg pools and other spaces such as gyms which are used extensively by the community.

Answer *AM - speaking to L&C, Neighbourhood services, etc. Full consultation will be held on what exists and what we need. Nothing is yet decided, pools, pitches and sports facilities are being looked at across the local authority by a number of relevant parties including the council through a "places strategy" to make sure we don't duplicate thing unnecessarily and identify where there may be a deficit.*

Question What do the teaching staff at Braeview and Craigie think of the proposal?

Answer *AM - they are part of consultation; generally positive response so far; formal meetings are planned during the coming weeks to gain their views however they understand that this is needed; we will work closely with both sets of staff over a long time. Experience of S3-S6 Braeview in Craigie during the recent decant due to the Braeview fire was largely positive according to both pupils and staff.*

Question Will there be enough support, in a bigger school, for pupils with hearing impairment?

Answer AM: Yes; Provision for ASN pupils is a key part of the proposal, there is already good resource in the current schools, staffing ratios will reflect pupil numbers and the school roll, the detail of this will need to be worked through with colleagues if the proposal is to go ahead however this is one of many key elements of the proposal..

Question Will there be enough space?

Answer AM: Yes; Initial roll will be approximately 1600 in a school able to take approximately 1879 pupils. The Intention is to build the school larger so it can accommodate more pupils if the population in this area grows in the future.

Question Will there be ASN staff cuts?

Answer AM: No; staffing will always be in line with national guidance, we continue to work to a staffing formula, if anything the staff numbers will grow over the years with the increase in pupil roll.

Question Did Braeview and Craigie staff have difficulties working together when the schools were together after the Braeview fire?

Answer AM: No, although such situations are often more challenging for staff than for pupils. S3-6 got on really well and jointly planned included events during their time in the same building. Staff also worked well together to overcome any issues, a lot of resources were lost by Braeview as a result of the fire, both schools already worked closely as planning partners, colleagues shared and developed even more resources as a result of them sharing a building for several months.

Question I was at Craigie HS (I am hearing impaired) and remember lots of troubles when Linlathen and Whitfield merged. There was lots of bullying and behaviour was poor. Would that be repeated or even worse, with the bigger roll?

Answer AM: ensuring that all children are safe is a key role for any school and will be central to planning and preparation for moving into the new school. Times are different – youngsters from different areas know each other much better now, through social media and social events. We have learnt a great deal from recently bringing together other schools in the city and are confident that this won't be an issue, if this proposal goes ahead, a significant period of time is available to work with both the secondary's and primaries in joint transitional activities.

Question I don't think CHS is that bad just now - with a bit of spending the building could be improved greatly, although not like a new school.

Answer AM: Unfortunately the issue is not simply cosmetic, the infrastructure of the building at Craigie has a finite life, given both school buildings are graded "C" we don't think that the spend required could be justified because of the overall condition of both buildings. The Council also has to apply for funding support to build new schools, we are more likely to gain approval from the Scottish Government to build the proposed Campus as it meets many more of their criteria, than two individual schools. Building two schools would also be much more expensive at a time when council have less and less money available to them, the Scottish Government will not simply give you funding to replace like with like.

Question How are catchment boundaries worked out? My house is much closer to Grove than to this new school. My walk would be 15 min to Grove, 30 min to new site.

Answer GL: demographics, population figures and projections are all modelled by council departments who specialize in this. From these figures, catchment boundaries are proposed then agreed at Committee, catchment lines tend to be drawn according to main roads as these often are seen as natural boundaries.

AM: Schools are rarely right in the center of their catchment and there are often situations where some houses are a bit nearer to another school than the catchment one. Parents always have the right to make a Placing Request to a non-catchment school which will be considered in relation to available spaces.

Question My daughter will be in Craigie S5 at the time of the new school opening and we live in the Craigiebarns catchment which will change to Grove. Will she be able to move to the new school with her friends?

Answer *AM and GL: Yes, definitely. All pupils at Craigie or Braeview at the time of the merge will be able to attend the new school, currently the catchment change proposal is for Craigiebarns pupils to undertake transitional activities and attend Grove from August 2024. This applies to the P7 who would be the new S1 for session 2024-25.*

Question When the two schools come together, will young people be able to stay in classes with their friends or would they all be mixed up?

Answer *AM: the intention would always be to minimise upset and so pupils' opinions and views would always be taken into account when setting up classes. We wouldn't want to have 'ex-Craigie only' and 'ex Braeview only' classes though, so there would need to be some mixing. Again the transitional work undertaken between the primaries and secondary's well in advance of the two schools coming together will be key to this, so young people have the opportunity to socialise and learn together so they can build and establish relationships. Many young people already know one another through social media and local clubs or associations*

Question What would the transition arrangements be for the start of the new school and what work would be done with young people in advance?

Answer *AM: we have lots of experience of and success with this. Lots of joint activities and consultation with youngsters will take place; the schools have already aligned their curriculum structures because of the recent Braeview fire and curricular offers and staffing structures would be carefully worked through and have union and staff involvement if this proposal goes ahead; staff already work very closely together and would have many more opportunities to continue to do so.*

AM thanked everyone for attending and closed the meeting at 7:15pm.

School Estate Proposals

FORMAL CONSULTATION ACTIVITY

Engagement Sessions with Craigie High S1 & Pupil Voice
Venue : Craigie High School

4th March 2020 2pm

Officers: Verity Scott, Senior Officer Locality West, Gordon Laidlaw , Project Officer
Other Attendees: None

25 attended the session, those represented were ~~staff/pupils/parents/carers~~, 24 S1 pupils split into two sessions, 12 in each. They were support by a senior pupil.

All conversations during the session took place in relation to Children and Families Service school estate proposals, of which formal consultation is being undertaken between 10th February and 27th March 2020.

Key observations/concerns raised:

What do you know

- Possibility of a new school
- Government can't fund 2 schools
- Craigiebarns catchment change
- Rubbish condition of both schools
- Lots of stress involved in the move – if happens
- Isn't it on a flood plain?
- Talked about it in a school meeting, Knew that people were coming so we could tell them what we think!
- Knew where the new school was going to be– where St Saviours was
- Braeview was burnt down
- Craigie is in a state – especially bathrooms
- Both schools are merging into one, Schools were maybe coming together
- Costs lots of money

What do you think

- I think it's a good idea because the school is really old and we need an upgrade
- We think it's a really good idea
- Think Braeview and Craigie should become one school because Craigie is really old
- Craigie is falling apart/vandalism/school unsafe
- It is a good idea but will come with failures and some pupils will leave
- I think it's a bad idea, like starting S1 again and it will be so confusing
- Just do repairs don't build new school such as toilets/showers
- Could be noisy as too many people –hard if your anxious
- So difficult to transition from P7 upwards as large amounts of pupils
- I think Craigiebarns going to Grove is good idea because there will be too many people going to the new school
- Grove is quite far and may not be able to cope with Craigiebarns pupils

- Fighting between pupils? Need supervision to avoid fights!
- There's never an perfect time to do it
- Hard for people doing exams if we moved early.
- It wouldn't effect education if people get used to the school as it is at the start of a new school year (August).
- Bus an issue – related to change of catchment and new school, how to get to school
- Need to look at buses and bus routes
- New schools look nice- Grove
- New schools are in better condition
- Mixed feelings – better looking/resources
- It will disrupt our learning and exams
- It should not happen
- Not many would be there if you don't go into 6th year.

What would you like to happen

- New school, help design the school
- New name, have a say in the name
- To have a say on the uniform
- All pupils included in one school.
- We would like to keep friends together.
- We would like to help in the design – new badge and bits for the school
- More trips and clubs
- We think it should happen because Craigie is really old and Braeview is burned
- Craigie could be upgraded – but understand it has issues
- Transitions days for both schools to come together to check the new school in Year groups – S6 one day then S5 and so on....
- Organise activities to get to know each other people
- Better to have bigger school with more resources
- Mixed opinions – new larger school
- Prefer a smaller school, smaller classes but realise why bigger school is better
- Catchment to stay the same – to help siblings
- We would like Craigiebarns catchment to be split or a choice given
- It is better for the government so I am in
- Swimming pool
- Bus route/school bus
- Harsher punishments for breaking things
- One group split group – 2 undecided 2 want merger

What would you like to know

(Answer given by GL/V/S italicized below each question)

- Grove too far to walk for Craigiebarns pupils?
 - *Depends on where they live, no different to other schools and their catchments.*
- What would happen to the land from our school?
 - *Not yet decided, but building would likely be knocked down.*
- Will there be places for lunch out of school?
 - *The school will have a dining centre, there are some local shops*
- Can we mix Braeview and Craigie badge and tie together?
 - *Pupils would be involved in all aspects of a potential new uniform.*
- Will there be free new ties?
 - *Good question, don't know but will ask*
- Understanding of costs –why can't we have 2 schools?
 - *It's difficult for the council to borrow big amounts of money, there are certain requirements set out in order to get funding support from the government, a bigger proposed campus would achieve more of the governments outcomes and could create more facilities for the community. Smaller schools have limited opportunities due to reduced curriculum and subject choices.*

- Discussion re costs of 1 verses 2 schools
- Are Braeview and Craigie the only C grades schools?
 - *Yes the only remaining Secondary schools that have not been extensively refurbished or replaced.*
 - Discussion re school estate
- What do Braeview think?
 - *They asked the same question earlier today we explained we would meet with you as well and record your views!*
- Would the teachers be the same? What will happen to the teachers?
 - *Not yet discussed but the campus will need a lot of teachers to teach/support all pupils within the merged school. We would expect most teachers to move to the new school, however before that time some may retire or get other jobs or promotions.*
- How will Craigiebarns go to Grove if there is already lots of people there?
 - *A lot of young people from the Craigiebarns catchment area already attend Grove, the school has the capacity to cope.*
- What is the new catchment area for the school going to be?
 - *Same as currently for both schools with the exception of Craigiebarns Primary School.*
- What would happen to younger siblings? Would they be able to come to same school?
 - *Yes that would be part of the proposal, Families also have the choice to apply for other schools if they wish.*
- What would happen to this building? use for support school?
 - *Don't know, the building may likely get knocked down however no discussion has taken place about the site.*
- Would transition events would be held?
 - *Explained an extensive transition plan will be agreed between all schools including the primaries.*
- Would there be a way to bridge the gaps between learning in the 2 schools.
 - *Yes in fact both schools have shared a lot of curriculum and planning since the Braeview fire as they lost a lot of materials, Schools already develop materials as they are called learning partners which means they share results and plans on how they perform and improve.*

Discussion around process and the involvement of both schools in the consultation

- Will there be a bus route, Will there be a school bus?
- What will happen to our exams, would this disrupt exams?
- The name of the School, Design the uniform and the Badge.
- Were Braeview & Craigie considered for upgrading earlier before they got worse?
- Would there be a quiet room?

All attendees were made aware that their views would be collated into a consultation report to help inform final decision regarding the proposals. Views out with the meeting could also be shared via email and written response as indicated within the consultation materials to Children and Families Service.

School Estate Proposals

FORMAL CONSULTATION ACTIVITY

**Engagement Sessions with Grove Academy Staff
Venue : Grove Academy**

1st September 2020 4pm

Officers: Pam Nesbitt Education Manager (PN), Gordon Laidlaw, project officer (GL), Helen Gray, Education Officer (HG) (note taker).

Other Attendees: Graham Hutton, HT Grove Academy (GH)

2 individuals attended the session, those represented were **staff**

All conversations during the session took place in relation to Children and Families Service school estate proposals, of which formal consultation is being undertaken between 10th February and 27th March 2020. (extended during Aug 17th – September 4th 2020)

The Meeting was conducted via MS Teams, All staff were assembled (physically distanced) in the Heat Teachers office and engaged via video link.

Key observations/concerns raised:

At the start of the meeting, PN thanked everyone for their attendance and stressed the importance of their views being expressed and shared with the Scottish Government.

GL articulated the proposal for the community campus and the consultation process involved. He talked to a prepared presentation which was shared on-screen and latterly shared presentation with GH who distributed to all school staff.

The staff member acknowledged and supports intention of proposals however had questions regarding the detail.

Question : With reference to the catchment changes we were asked if the predictions were accurate. Concern was raised regarding Grove being near capacity and the potential need to use portacabins or Eastern because of their lack of outside space.

Answer: Predictions were explained, data from current primary rolls and the next 6 years available and factual. Data analysis team have worked with City Development and used their expertise in knowing new build housing development capacity surrounding them. While not an exact science it is very reliable.

Question : With reference to presentation it suggests pupils will experience a modern digital learning environment, however within Grove Wi-Fi is a concern due to its unreliability.

Answer: This issue was acknowledged and notes. We would be keen support the school in address this issue to make sure this doesn't impact negatively upon the teaching and learning experience for young people and colleagues within the school.

Question: What will happen with placing requests if there are more pupils in the catchment area, currently some children are priority 1 and on a waiting list.

Answer: By increasing the catchment area, over time the school will increase the number of priority 1 pupil on the roll, this will reduce the number of available places for pupils that live out with catchment. A fuller school will also mean less places and spaces are available and strengthens the schools case when faced with a placing request appeal. Reserve spaces are allocated for families moving into the catchment area, waiting lists come about if these places are already taken and the year group is full.

Question Could there be a check on all data given there may be a change resulting from the COVID outbreak.

Answer: GL agreed to do so.

Staff did agree with need for equity of provision across the city and with the new build proposal. GL also agreed to provide heat maps which identified current Grove pupils living within the Craigiebarns catchment area.

Pam Nesbitt finished the meeting by thanking everyone for listening, attending and contributing.
Meeting closed at 4:55pm

School Estate Proposals

FORMAL CONSULTATION ACTIVITY

Engagement Sessions with Grove Pupil Voice Venue : Grove Academy

4th March 2020

Officers: Verity Scott, Senior Officer Locality West, Gordon Laidlaw , Project Officer
Other Attendees: Graham Hutton HT, Mark Docherty DHT – both were present at point throughout the discussion.

8 attended the session, those represented were **staff/pupils/parents/carers**, These were representatives of pupils voice from S1-S6, the majority previously attended Craigiebarns primary school.

All conversations during the session took place in relation to Children and Families Service school estate proposals, of which formal consultation is being undertaken between 10th February and 27th March 2020.

Key observations/concerns raised:

What do you know

- Knew about it through letter from school
- Knew about through sibling attending Craigiebarns
- Rumours since Braeview burnt down – people talking that they might merge
- Rumours since P6
- Informal consultation last year

What do you think

- One pupil don't think the merger is a good idea because of friction that happened during decant, they had heard this from friends attending another school.
 - *Officers explained the proposal was for one school community so would be different to the two schools sharing a building during the decant.*
- Think it's a good idea for Craigiebarns pupils to attend Grove
- Transition was hard when you were the only pupil who moved to Grove from Craigiebarns
- Transition easier if whole of P7 moved to one school.

What would you like to happen

- Craigiebarns to come into Grove catchment
- Choice to also attend new merger school, brothers and sisters.
- Catchment a good idea but not so sure about the merger.
- Group felt it was a good idea to build a new school larger than the current roll to allow for space in the future, based on their experience at Grove

What would you like to know

- Why do they want to merge two schools?
 - *GL gave an overview of proposal*
- What will happen to teachers in the schools?

- *If proposal is taken forward teachers and young people will be involved in all aspects of merger. Conversations haven't taken place with teachers regarding staffing implication due to the sensitivities, this will happen if the proposal is agreed in the future. Staff are being consulted on the proposals.*
- What will happen to the old sites?
 - *Discussed options for sites such as green space or future housing– pupils suggested more park space was a good idea.*
- Would the school have to be large?
 - *Discussed numbers in comparison to Grove and also careful design would not make buildings or community campus too large or imposing.*
- How much would it cost?
 - *The cost has been worked out based on figure supplied by the Scottish Futures Trust, they are a government organisation who work with local authorities. The estimate is £60m.*
- Why not two schools?
 - *Discussed costs of one school verses two but more importantly pupil benefits including curricular experience/opportunities.*

All attendees were made aware that their views would be collated into a consultation report to help inform final decisions regarding the proposals. Views out with the meeting could also be shared via email and written response as indicated within the consultation materials to Children and Families Service.

School Estate Proposals FORMAL CONSULTATION ACTIVITY

Engagement Sessions with Grove Academy Parent Council Venue : Grove Academy

(this session didn't happen due to COVID 19 Lockdown however the following response was received in writing from the parent council)

3rd September 2020

As a Parent Council, we circulated the letter dated 17th August via email to all our members asking for feedback, as well as sharing the DCC links to the consultation on our Facebook and Twitter accounts. Unfortunately we have received absolutely no feedback. In addition to that, previously in March we circulated information in a similar manner to alert parents and parent council members. As a parent council, we are confident that everyone has been informed and given a chance to know and respond to the proposal and we cannot find any grounds for objections to the plans.

In our opinion, Grove Academy are not affected by this development to the same extent compared to the other parties involved. We have read the proposal, and recognise that in this we would rather not like to advocate either for or against the proposal. Grove Academy is a fabulous school and as parent body we welcome new pupils to experience the opportunities offered by the school.

School Estate Proposals

FORMAL CONSULTATION ACTIVITY

Engagement Session with Staff Focus Group Craigiebarns Primary School

11 March 2020

Officer: Iris Thomson, Education Officer

Other Attendees:

7 individuals attended the session, those represented were mainstream teachers, enhanced support staff and school SLT.

All conversations during the session took place in relation to Children and Families Service school estate proposals, of which formal consultation is being undertaken between 10th February and 27th March 2020.

Expansion of the catchment area for Grove Academy from August 2024 to embrace the current Craigiebarns Primary School Catchment area.

Key observations/concerns raised:

(answers provided below have been composed after the meeting.)

- Would there be a choice of Grove or Craigie for children in the enhanced area?
Answer: this is not part of the proposal but would be considered along with other consultees responses.
- Would the enhanced area be restricted to one school?
Answer: This detail is yet to be decided, it may be that an enhanced area is required in the new school and in Grove dependent upon which pupils go to these schools.
- Do you envisage there being a more peripatetic service rather than an enhanced support?
Answer: Depending upon the service needs, If the proposal is agreed, further engagement will be required to ascertain what model of delivery will best meet the needs of the young people and the service.
- Has anyone considered what would happen in relation to siblings – especially of enhanced area children?
Answer: Dundee City Council would always wish to provide the opportunity of siblings attending the same school and this level of priority would be part of the proposal.
- Will there be space in Grove if catchment were to be expanded?
Answer: Form both analysis and projections undertake, Yes.
- Would there be actual 'physical' space in Grove to operate?
Answer: Yes, currently 24% of pupils attending Grove are out with the catchment area, this proposal will increase the number of catchment pupils and decrease the space for non-catchment.
- Is there going to be a new Craigiebarns school built?
Answer: We continue to monitor the condition and suitability of the school estate on an annual basis, depending upon how the building performs over the coming years will determine if and when this may happen.
- Are there any proposals to upgrade Craigiebarns? – currently category C condition

Answer: Yes there are planned works which were highlighted in the service estate report in January 2020, further planned works are anticipated in the coming year.

- What are the logistics of pupils getting to Grove? Will there be extra transport laid on?

Answer: The distance from the furthest extent of the Craigiebarns catchment area to Grove Academy is less than 3 miles, there is no requirement to provide transport.

- What do the Grove teachers think about the proposals?

Answer: A similar meeting is planned to consult Grove staff.

- Is the proposal for Barnhill primary pupils to move to the Monifieth High catchment still going ahead?

Answer: At this time there is no definitive answer on this as, Angus council are still undertaking engagement regarding the Monifieth estate and in September 2019 deferred any decision on this as the Tri-council school was not going ahead.

All attendees were made aware that their views would be collated into a consultation report to help inform final decisions regarding the proposals. Views out with the meeting could also be shared via email and written response as indicated within the consultation materials to Children and Families Service.

School Estate Proposals

FORMAL CONSULTATION ACTIVITY

Engagement Session with Craigiebarns P3-P7 Pupil Focus Group Craigiebarns Primary School

11 March 2020

Officer: Iris Thomson, Education Officer

Other Attendees: None

9 individuals attended the session, those represented were **pupils**

All conversations during the session took place in relation to Children and Families Service school estate proposals, of which formal consultation is being undertaken between 10th February and 27th March 2020.

The closure of Braeview Academy and Craigie High School and the re-delineation of existing school catchments to form a new single catchment area for a new joint secondary school/community learning campus from August 2024.

- What would the new school be called?
- We would be moving to a nicer school
- I think it's a good idea (P6)
- They will build new houses at Craigie site (seen as a positive thing by pupils)
- Is it not cheaper to do up 2 schools rather than build a new school?

Expansion of the catchment area for Grove Academy from August 2024 to embrace the current Craigiebarns Primary School Catchment area.

Key observations/concerns raised:

What do you know

- We would be moving from an old school to a newer one (P3)
- I know lots of people there – Grove (P3)
- I live nearer to Grove
- I already go the swimming at Grove (P3)

What do you think

- We would meet new friends
- It is a new building and will have newer toilets
- We would be moving to a nicer school
- It's far away, It's hard to get there.
- It's a longer distance to travel
- There will be more resources
- Grove is too far away for some pupils.
- It is easier to get there (for some pupils only)

- I won't see my friends
- Unfamiliar teachers

What would you like to happen

- It's a good idea
- My mum doesn't want it to change (P5)

What would you like to know

- I live near Grove. If I went to Craigie then the catchment changed, could I move to Grove?
 - *Yes if your parents wished to move your school they could make a placing request.*
- Will siblings be split up?
 - *No, not if they don't want to , priority would remain for siblings*
- Would we have a different tie?
 - *Yes*
- How big is Grove? Would there be enough room for everyone? Would Grove not be too crowded?
 - *Grove is a big school that can take up to 1370 pupils, with so many pupils it will be busier compared to Craigiebarns or Craigie High School particularly in social areas at break and in the dining centre but should not be crowded.*
- Would there be transport put on to get to Grove?
 - *Only if someone is entitled to it, most if not all families will live less than 3 miles from the school, so transport would not be required.*
- If they decide against it, what would happen then?
 - *It would depend on what or if any of the proposals were accepted as to what would happen next, this would need to be looked at.*
- the layout of Grove, I don't know it.
 - *Any new pupils starting at Grove are shown round or buddied in their first few days, A transition programme is run by grove for all its associated primaries, similar to Craigie High School.*

All attendees were made aware that their views would be collated into a consultation report to help inform final decisions regarding the proposals. Views out with the meeting could also be shared via email and written response as indicated within the consultation materials to Children and Families Service.

School Estate Proposals

FORMAL CONSULTATION ACTIVITY

Engagement Sessions with Fintry Primary Pupil Voice Venue : Fintry Primary School

5th March 2020 8.50am

Officers: Anne Leary Education Officer
Other Attendees: None

8 attended the session, those represented were ~~staff/pupils/parents/carers~~,

All conversations during the session took place in relation to Children and Families Service school estate proposals, of which formal consultation is being undertaken between 10th February and 27th March 2020.

Key observations/concerns raised:

What do you know

- There will be a merging of the two schools
- The school will be located near the Drumgeith pitches
- Teachers will be the same
- Braeview doesn't have enough teachers and the young people are in portable cabins
- Braeview doesn't have a lot of money after the fire

What do you think

- Think I'll be good to meet more friends but some people might not like that
- I'd like it because I know lots of people from the CHS area but may be more fights
- Good because it will be a new building – but worrying for those sitting exams might be disadvantaged
- Better because new equipment and school could afford more and buy the best equipment and more staff which would be better for all of us
- A new school will be better because both schools are old and not really suitable, so this will be much better
- I like it with two schools merged but worried about there being too many people in one building
- The plan is good because we will have a new school, and more people to meet and make friends with, but might scare some people
- Good because there will be more people, but bad because there may be more fights and vandalism.

What would you like to happen

- Merge and have a new school – wider friendship
- I want a big, new school

- I would like a brand new school
- I would like a new school,
- I want a new school, bigger, better, with more facilities, space, equipment
- I want a new school with better equipment for learning
- I would like a new school, with better facilities, and it would be a waste of money to upgrade two old schools
- I want a new school, with better equipment, and more stuff, it will make learning more interesting
- I would like a new school, new resources, computers, laptops etc

What would you like to know

- Is it going to happen?
 - *It will depend on the outcome of all the conversations we are having, lots of reports will be written and given to a committee of local politicians who will make the decision based on all the information.*
- Who will help me when I am feeling lost in new building?
 - *A lot of work will be put into this if the building goes ahead, from recent experience with other schools we have found the best way it to take the oldest pupils into the school to help them familiarise, then through other pupils help everyone learn their way, this would be done over time prior to the school opening, pupils would also be involved in coming up with the best way to sign post inside the new building.*

School Estate Proposals

FORMAL CONSULTATION ACTIVITY

Engagement Sessions with pupils from Longhaugh Primary School
Venue Longhaugh primary school

25th February 2020

Officers: Debbie Gallacher

Other Attendees: N/A

6 individuals attended the session, those represented were **pupils**

All conversations during the session took place in relation to Children and Families Service school estate proposals, of which formal consultation is being undertaken between 10th February and 27th March 2020.

Key observations/concerns raised:

- More people in a school means more friends
- All good things come to an end so it's maybe time for Braeview to close
- Sometimes we just have to accept change
- It would be good to have a school in better condition with better equipment and facilities

The following concerns were raised:

- Flooding plain, (explained City Development have checked the land)
- The busy road – expressed the need for more crossing patrollers
- Don't like change – more people means more fights and more bullying
- Further distance to travel? and parking problems on a busy road

All attendees were made aware that their views would be collated into a consultation report to help inform final decisions regarding the proposals. Views out with the meeting could also be shared via email and written response as indicated within the consultation materials to Children and Families Service.

School Estate Proposals

FORMAL CONSULTATION ACTIVITY

Engagement Sessions with LCPPs

February 2020

Officers: G Laidlaw

All conversations during each LCPP session took place in relation to Children and Families Service school estate proposals, of which formal consultation was being undertaken between 10th February and 27th March 2020. The following LCPP's associated to the affected schools were attended and feedback is provided below:

North East LCPP 10th February 2020 2pm North East Campus

- Proposal is good for the east of the city.
- Request that communities are engaged as much as possible, and where relevant officers could attend meetings to assist and promote public understanding of proposals.

East End LCPP 13th February 2020 3pm Douglas Community Centre

- What will the school do to enhance the community, would accommodation be provided for community in addition to existing resources.
 - *The building would be a community asset, as such they would have a say in the design of the building and potential services that could be delivered from it, Yes we would hope the building would complement existing resource.*
- Will the community be able to use facilities in the campus outside of school hours.
 - *Yes this is the guiding principle behind the potential future building and the what the council aspires to.*

The Ferry LCPP 13th February 2020 5.30pm Blackness Library

- This is seen as a positive development for the West Ferry community and families in the east of the city.

The remaining LCPP meetings were also attended and the school estate proposals shared.

West End LCPP 6th February 2020

Coldside LCPP 11th February 2020

Maryfield LCPP 13th February 2020

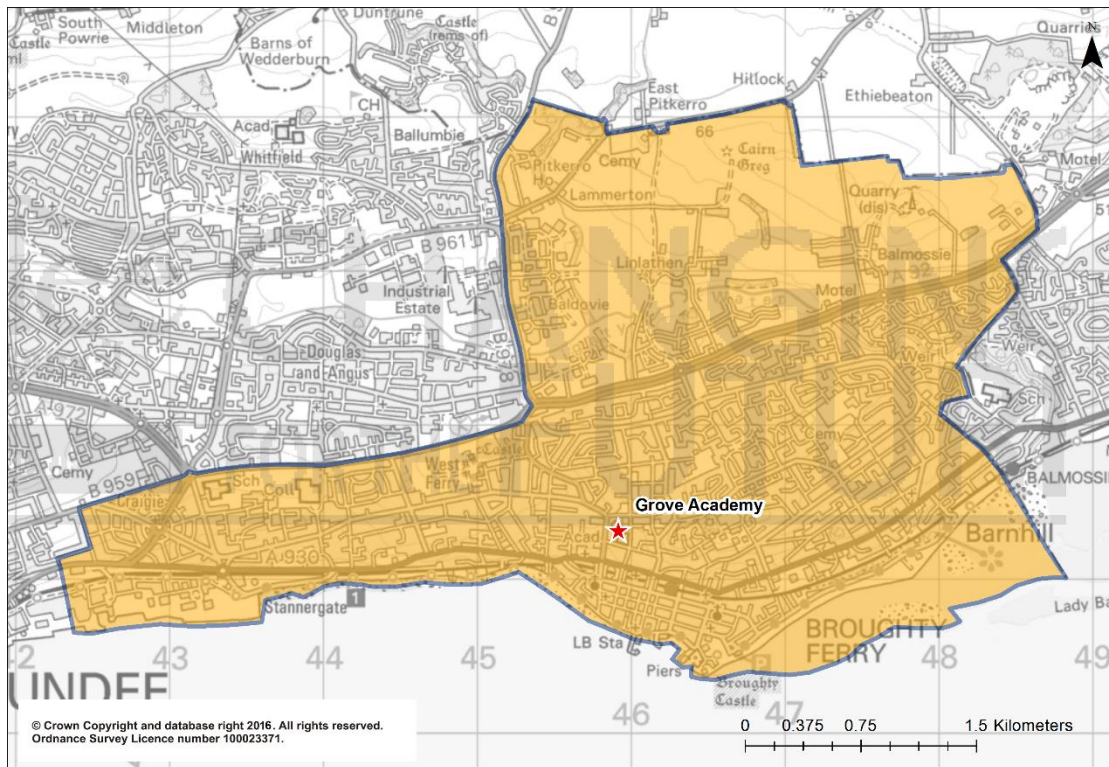
Lochee LCPP 25th February 2020

Strathmartine LCPP 26th February 2020

Proposed Catchment Boundaries

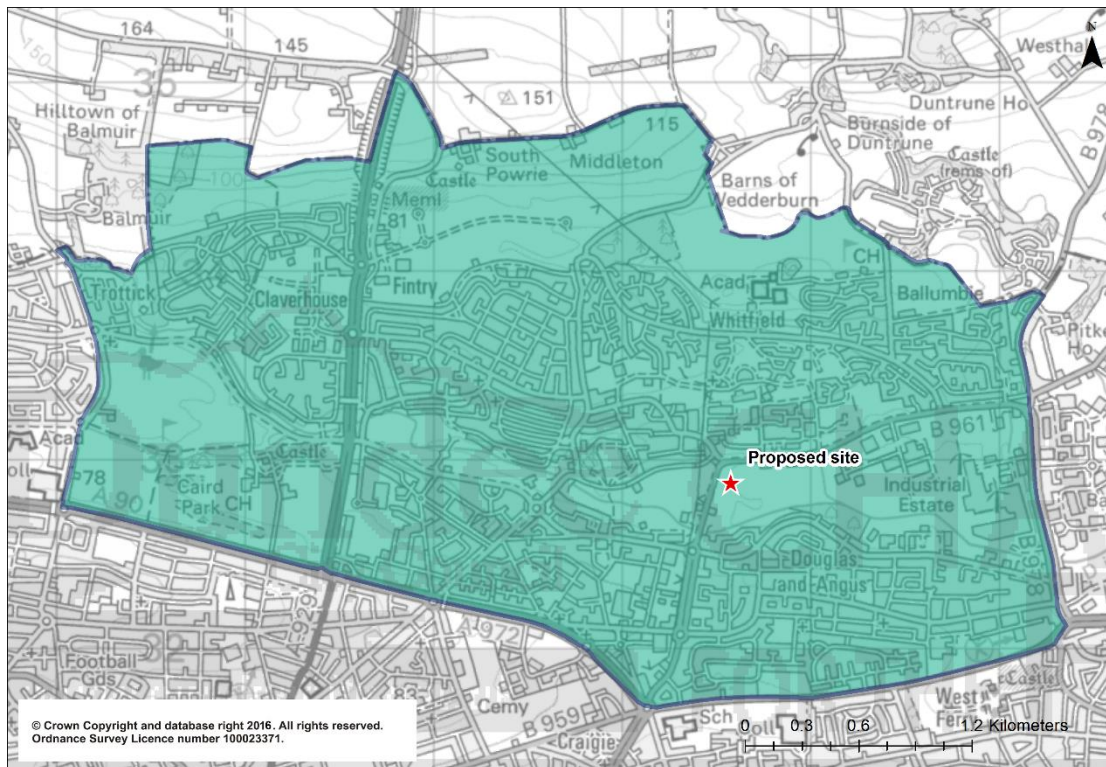
Grove Academy

Map 1: Proposed new catchment boundary for Grove Academy



The proposed new boundary for Grove Academy's catchment will run from the Dundee City Council boundary at Grid reference NO423306 north through the docks to Carolina Court. It will then run north along the eastern property boundary of 5 Carolina Court then across Broughty Ferry Road and north along the centreline of Murray Street continuing east along the centre line of Murray Street to the junction with Dalgleish Road. Then north along the centreline of Dalgleish Road to the junction with the Arbroath Road (B959). Then east along the centreline of the Arbroath Road transitioning into the Arbroath Road (A92), continuing along the centreline of the Arbroath Road (A92) to the Claypotts junction with Baldovie Road. Then north along the centreline of Baldovie Road to the junction with Drumgeith Road and Kellas Road. Then north along the centreline of Kellas Road (B978) to meet the Dundee City Council Boundary at grid reference NO452338. The catchment boundary will then follow Dundee City Council's boundary clockwise to close at Grid reference NO423306.

Map 2: Proposed catchment for the new learning estate replacing Braeview Academy and Craigie High School



The proposed boundary for the new learning estate would run from the center point of the roundabout at the junction of the Kingsway (A90) and Old Glamis Road, north along the centre line of Old Glamis Road to the junction with Harestane Road and Emmock Road. Then north along the centre line of Emmock road to the Dundee City Council Boundary. Then east along Dundee City Council's boundary to Kellas Road (B978). Then south along the centreline of Kellas Road to the junction with Baldovie Road and Drumgeith Road. Then south along the centre line of Baldovie Road to the Claypotts junction with the Arbroath Road (A92). Then west along the centreline of the Arbroath Road (A92) to the centre point of roundabout at the junction with Kingsway East (A972). Then northwest to west along the centreline of the Kingsway East (A972), continuing along the centreline of the Kingsway (A90) to the center point of the roundabout at the junction of the Kingsway (A90) and Old Glamis Road.

Thematic Summary of Submissions Received in relation to proposal from Dundee Parents/Carers, Residents and Organisations

19 representations were received from Dundee parents, carers, young people and residents and 5 additional submissions received from organisations as follows: Grove Parent Council, Craigiebarns Parent Council, Broughty Ferry Community Council, Fairfield Community Sports Hub, Xplore Dundee.

Themes - Emergent themes and issues from the submissions included:

- *New school, new buildings, new facilities*
- *Desire for community input and partnership working throughout project.*
- *Sibling priority status and continuity for families wishing to retain their children at the same secondary provision.*
- *Maintaining peer friendships/relationships within the new secondary settings*
- *Proposal of the Craigiebarns catchment change being implemented earlier*
- *Concerns over the size of Grove and its ability to cope with the addition of Craigiebarns*
- *Praised for proposal potentially alleviating effect upon Grove pupil levels*
- *Suitability of proposed site for new school, concerns regarding flooding.*
- *Impact upon attainment due to increased pupil population*

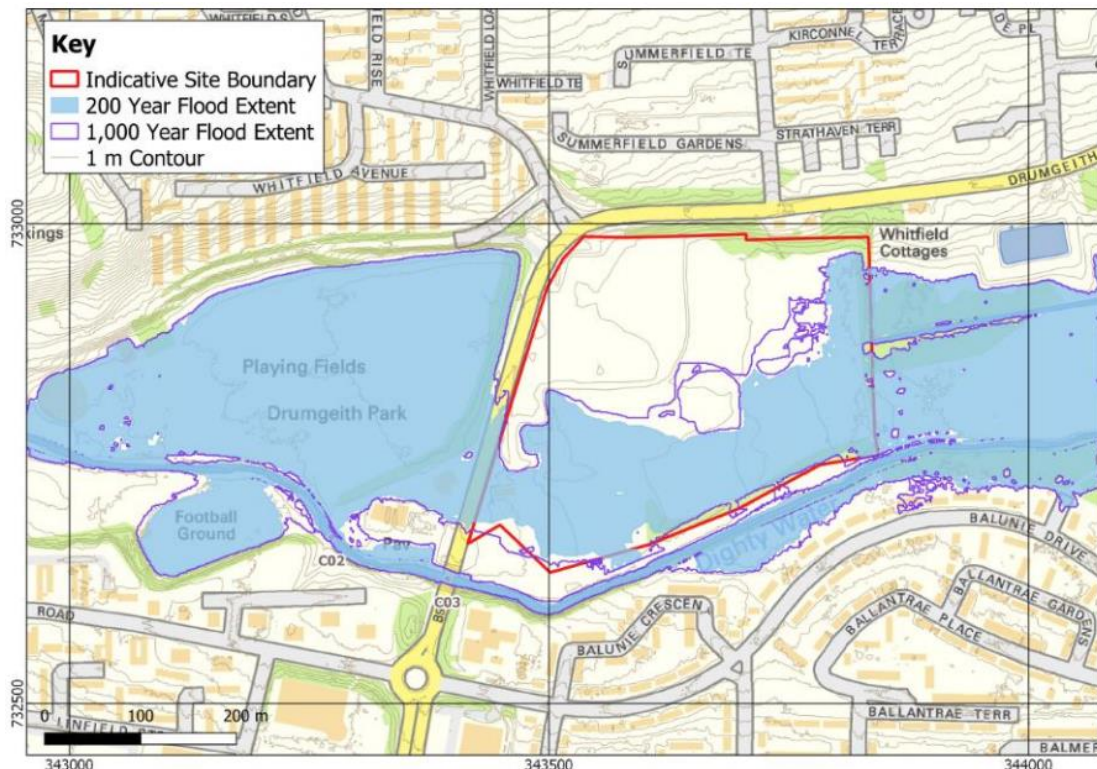
Wider themes from the overall feedback include:

- *Transition and support of pupils and staff*
- *The school Identity, name and uniform*
- *Travel concerns including environmental issues*
- *Site and location*
- *Community buildings and capacity*

Extract from Fairhurst report commissioned by Dundee City Council.

EXECUTIVE SUMMARY

Fairhurst was appointed by Dundee City Council to assess flood risk at the site of a proposed school development at the former St Saviours Academy off Drumgeith Road. Hydraulic modelling has been carried out to delineate the functional floodplain (i.e. the 1 in 200 year return period flood extent) and the 1 in 1,000 year return period floodplain of the adjacent Dighty Water. Modelled flood extents provided on Drawings 136924/GIS/001 and 136924/GIS/002 (Appendix 1) indicate that flood waters are expected to extend across the southern and eastern extents of the site, as illustrated below.



Contains Infoterra LIDAR data and Ordnance Survey data © Crown copyright and database rights 2020

In accordance with Scottish Planning Policy (SPP) and SEPA Land Use Vulnerability Guidance, school buildings should be located outwith the 1 in 1,000 year floodplain.

Areas located outwith the 200 year floodplain are considered generally suitable for development, except for 'Most Vulnerable Uses' (including schools).

Dry vehicular access will not be possible from the existing access point in the south-west corner of the site; however, alternative access could be formed from Drumgeith Road on the north-western or northern boundaries.

It is recommended that a sequential approach is applied to the layout of development within the site area with more vulnerable land uses located on higher ground, further from the floodplain.

The suggested hierarchy, based on likely development types on the site, is as follows:

- School buildings;
- Multi Use Games Areas (MUGA);
- Car parking;

- Sustainable Urban Drainage System (SuDS) basins; and
- Grass playing fields.

The siting of any other proposed land uses should take into consideration the associated vulnerability as defined in SEPA’s Land Use Vulnerability Guidance.

To prevent an increase in flood risk as a result of the development, the following measures can be adopted:

- *Avoid land raising within the functional floodplain (1 in 200 year flood extent) to prevent a loss of flood storage.*
- *Utilise a new surface water drainage system for the proposed development, incorporating SuDS and attenuating discharge to pre-development greenfield rates for the site.*

Allowable discharge rates should be set based on the drained impermeable area created for the development. Greenfield discharge rates are provided in the table below on a ‘per hectare’ basis.

Return Period	Greenfield discharge rates (l/s/ha)
2 year	3.0
5 year	4.0
10 year	4.9
30 year	6.3
50 year	7.1
200 year	9.7

Dundee City Council’s ‘Sustainable Drainage Systems Design Criteria Guidance Note’ states:

The post development critical 1-in-30 year return period event for the application site is to be attenuated within the surface water drainage system, normally to the equivalent of a 1-in-5 year return period event green-field release.

The difference between the post development critical 1-in-30 year and 1-in-200 year return period events (plus allowances for climate change) for the application site should be accommodated within the application site and must not increase the flood risk to properties within or outwith the application site.

Residual risk from other potential sources of flooding, including overland flow, sewer flooding and groundwater can be mitigated by setting finished floor levels above surrounding ground and profiling ground levels to route flow around and away from buildings and other sensitive receptors.

The full report can be found at the link below

[External Link](#) 'Drumgeith Road Dundee FAIRHURST.pdf'