

ITEM No ...4.....

REPORT TO: CHILDREN AND FAMILIES SERVICES COMMITTEE – 25 OCTOBER 2021

REPORT ON: REALIGNMENT OF FEEDER PRIMARIES AND PRIMARY CATCHMENT AREAS OF CLUSTER SCHOOLS ASSOCIATED TO HARRIS ACADEMY - OUTCOME OF THE FORMAL CONSULTATION PROCESS

REPORT BY: EXECUTIVE DIRECTOR OF CHILDREN AND FAMILIES SERVICE

REPORT NO: 287-2021

1.0 PURPOSE OF REPORT

1.1 This report contains the Formal Consultation Report, in terms of the Schools (Consultation) (Scotland) Act 2010, on the following proposals:

- i) the removal of Invergowrie Primary Schools status as an associated primary to Harris Academy from August 2021;
- ii) the revision of catchment areas for Ancrum Road Primary School, Blackness Primary School, Camperdown Primary School, Tayview Primary School and Victoria Park Primary School from August 2021.

2.0 RECOMMENDATION

It is recommended that the Children and Families Services Committee:

- i. note the contents of this Committee report;
- ii. note the accompanying Consultation Report, including the report by Her Majesty's Inspectorate of Education (HMIE) / Education Scotland on the proposal;
- iii. instructs the Executive Director to proceed in part with the proposals;
- iv. approve the revision of the catchment areas for Ancrum Road Primary School, Blackness Primary School, Camperdown Primary School, Tayview Primary School and Victoria Park Primary School with a revised date of August 2022 resulting from delays as a consequence of the COVID-19 Pandemic.
- v. not approve the proposal to remove Invergowrie Primary Schools status as an associated primary to Harris Academy;
- vi. approve the proposal from Perth and Kinross Council to pay for the capital costs of extending Harris Academy;
- vii. delegate powers to relevant officers, including the Chief Executive, the Executive Director of City Development, the Executive Director of Corporate Services, the Executive Director of Children and Families Services and the Head of Democratic and Legal Services, to conclude all arrangements in connection with this matter (provided that the officers shall not let a contract for the construction of the Harris Academy Extension until a binding legal agreement has been entered into by Perth and Kinross Council reflecting the terms of this Report and containing such other provisions as the officers think appropriate or necessary).

3.0 FINANCIAL IMPLICATIONS

3.1 The Capital cost of extending Harris Academy will be in the region of £4.2m, and these costs will be met in full by Perth and Kinross Council.

3.2 Based on the footprint of the extension the additional annual operational property costs for the extension, including non-domestic rates and energy costs, will be in the region of £45-£50K per annum. In addition to this the larger building allows the possibility of additional pupils, which would have a proportionate impact in increased staffing levels. These costs will require to be reflected in the Revenue Budget once the new extension is operational.

4.0 BACKGROUND

- 4.1 At its meeting on 27 January 2020, the Children and Families Service Committee instructed the Executive Director to formally consult on the proposals in terms of the Schools (Consultation) (Scotland) Act 2010 and report back to Committee in due course on the outcome of the consultations, Article IV of the Children and Families Services Committee of 27 January 2020 (Committee report no. 43-2020 refers). It was intended that the outcomes of the consultation proposal be brought to committee in June 2020 however due to the COVID-19 Pandemic, the committee was suspended and all relevant business reassigned a later date.
- 4.2 The formal consultation on the proposals ran from 10th February to 27th March 2020, in addition there was a further three-week period of online engagement from 17th August to 4th September 2020 resulting from the schools closure on the 20th March in attempts to reduce the spread of COVID-19. Following feedback from these two periods of consultation, the proposal paper was revised to reflect consultee feedback. A final period of consultation was then undertaken to gain any additional feedback on the revised proposal paper between 18th November to 9th December 2020.
- 4.3 Details of the consultation were notified in all relevant engagement periods directly to all relevant consultees via letter and on the council's website. During all periods of consultation responses in either written or electronic format were invited and accepted. As part of the arrangements for consulting on the proposal, Children and Families Service held a public meeting on 26th February 2020 at Harris Academy.
- 4.4 Fifty-five written responses were received in relation to the proposals to remove Invergowrie Primary School as an associated primary to Harris Academy.
- 4.5 Seven written responses were received to the proposed revision of catchment areas for Ancrum Road Primary School, Blackness Primary School, Camperdown Primary School, Tayview Primary School and Victoria Park Primary School from August 2021.
- 4.6 A copy of the consultation report is attached as Appendix 1, a copy of the report by Education Scotland is attached as Appendix 2 and copies of the notes of the meetings held during the consultation period are attached as Appendix 3. The thematic summary of responses is attached as Appendix 4 and visual and written descriptions of the proposed new boundaries are outlined in Appendix 5.

5.0 APPROVAL OF THE PROPOSAL

- 5.1 Education Scotland indicated in their report that the proposal regarding the catchment changes for the Harris Academy feeder primaries had clear educational benefit. Education Scotland viewed the proposal to remove Invergowrie Primary School as having a few educational benefits, and agreed that although it may not fully resolve the future capacity issues in Harris Academy, this action would assist in reducing the pressure on the school roll and offer more flexibility and improve opportunities for educational and social activities. Education Scotland in addition in their report summarised a number of issues arising from responses to the consultation and suggested that these should be addressed by officers in the consultation report.
- 5.2 Prior to and throughout the consultation process, Dundee City Council have engaged with Perth and Kinross Council regarding school estate needs within the west of Dundee and possible solutions to address these. This engagement will continue, and is supported by a full-time seconded officer through the Tayside Regional Improvement Collaborative funding to support all matters relating to school estate development, including work with Angus Council.

Formal responses received by Dundee City Council from Perth and Kinross Council to the proposal were in relation to the initial and revised proposal papers of which reference is made within the consultation report. Children and Families Service will continue to monitor and keep under review capacities within its school estate, planning and responding accordingly to this data in future years.

- 5.3 Education Scotland suggested Dundee City Council should continue to engage with key stakeholders including Perth and Kinross Council, parents, school leaders and staff, to consider the viability of the alternative solutions raised by stakeholders as part of the consultation process. Following publication of the consultation report in December 2020 and

proposals being considered for committee approval in March 2021, Perth and Kinross Council approached Dundee City Council with an alternative proposal to avoid the removal of Invergowrie Primary Schools status as an associated primary to Harris Academy.

- 5.4 Perth and Kinross Council propose that they would cover the reasonably incurred costs of extending Harris Academy to provide additional accommodation for Invergowrie primary pupils residing within the Harris Academy catchment area who have priority 1 status, enabling Harris Academy to manage a larger pupil population by increasing its existing capacity of 1309 pupils. On receiving this proposal, Dundee City Council agreed to delay any decision in relation to the Harris Academy consultation proposals in March 2021 to allow for engagement to take place between council officers to understand better the implications of Perth and Kinross Councils proposal.
- 5.5 In agreement from Perth and Kinross Council, initial feasibility was undertaken by Dundee City Council between March and July of 2021. The feasibility projected delivery of 6 additional classrooms, circulation and social space, proposing an increase in Harris Academies capacity by up to 198 pupils thus providing space for approximately 1507 pupils.
- 5.6 As the extension would become part of Dundee City Council's service estate, Dundee City Council would remain responsible for all property maintenance costs for the lifecycle of the building. Additional annual operational costs for Harris Academy would rise by approximately £45-£50k per annum. In addition to this the larger building allows the possibility of additional pupils, which would have a proportionate impact in increased staffing levels. These costs will require to be reflected in the Revenue Budget once the new extension is operational.
- 5.7 At a meeting of Perth & Kinross Council on 6th October 2021 elected members agreed that Perth & Kinross Council should provide funding in the region of £4.2 million pounds to meet the capital cost of an extension to Harris Academy. It is intended that a Legal Agreement will be entered into by Dundee City Council and Perth & Kinross Council in respect of the proposed extension. The Legal Agreement will include *inter alia* liability for the capital cost, revenue and insurance costs of the proposed extension and the Harris/Invergowrie catchment area boundaries.
- 5.8 In the unlikely event that factors arise which may result in Perth and Kinross Council withdrawing from the proposition to extend Harris Academy, the proposal to remove Invergowrie Primary Schools status as an associated primary to Harris Academy will require to be revisited and require further consultation

6.0 POLICY IMPLICATIONS

- 6.1 This Report has been subject to an assessment of any impact on equality and diversity, fairness and poverty, environment and corporate risk. There are no major issues.

7.0 CONSULTATIONS

- 7.1 The Council Management Team have been consulted in the preparation of this report.

8.0 BACKGROUND PAPERS

- 8.1 None.

Mr Paul Clancy
Executive Director of Children and Families Service
October 2021

Mr Gordon Laidlaw
Project Officer

DUNDEE CITY COUNCIL

CONSULTATION REPORT

- 1 **The removal of Invergowrie Primary School's status as an associated primary to Harris Academy from August 2021**
- 2 **The revision of catchment areas for Ancrum Road Primary School, Blackness Primary School, Camperdown Primary School, Tayview Primary School and Victoria Park Primary School from August 2021**

This Consultation Report is available on the Dundee City Council website - <https://www.dundee.gov.uk/school-learning-estate-formal-consultation> - and also in printed form from the following locations: Dundee House, Harris Academy, Ancrum Road Primary School, Blackness Primary School, Camperdown Primary School, Tayview Primary School, Victoria Park Primary School and Invergowrie Primary School

1.0 BACKGROUND

- 1.1 Article VI of the Minute of the Meeting of the Children and Families Services Committee held on Monday 9 September 2019, report no 297-2019 refers, notes that the Executive Director of Children and Families Services, following completion of a period of related informal consultation, was instructed to execute further work on options related to Dundee City Council's learning estate and bring recommendations back to the Children and Families Service Committee for approval.

At its meeting on 27 January 2020, the Children and Families Service Committee instructed the Executive Director to consult formally on the proposals in terms of the Schools (Consultation) (Scotland) Act 2010 and report back to Committee in due course on the outcome of the consultations.

- 1.2 The proposal is that Invergowrie Primary School's status as an associated primary school to Harris Academy is removed from August 2021
- The catchment areas for Ancrum Road Primary School, Blackness Primary School, Camperdown Primary School, Tayview Primary School and Victoria Park Primary School are revised to address future rolls from August 2021.
- 1.3 A number of educational benefits were identified as part of these proposals:

The removal of Invergowrie Primary School's status as an associated primary to Harris Academy from August 2021

HARRIS ACADEMY

- 1.3.1 A reduction in the roll at Harris Academy will reduce pressures on pupil class sizes, enabling greater teacher pupil engagement during lessons.
- 1.3.2 The Harris Academy cluster would have complete control over its curricular transition, cluster developments and progression by the removal of Invergowrie as an associated primary school.
- 1.3.3 Space for learners to take part in a wider range of educational and social activities would continue to be available to ensure greater flexibility in timetabling, more availability of accommodation and enable better conditions to deliver additional, individualised or directed learning experiences.

- 1.3.4 The Head Teachers of all Harris Academy cluster primaries work closely together and meet on a regular basis to plan shared developments and to carry forward joint shared improvement priorities. This is good practice and would continue in the future.

INVERGOWRIE PRIMARY SCHOOL

- 1.3.5 At the start of this current academic session, of the 27 Invergowrie Primary P7 pupils, 24 pupils went into S1 at Harris Academy and 3 went to other schools, including Perth High School. The proposal would give all families in the Invergowrie Primary School catchment area the opportunity to have their children attend the same secondary school. This could enhance social and community cohesion to a secondary school within the Perth and Kinross Council boundary whilst providing long term placement certainty for families and supporting effective school/community links.
- 1.3.6 The proposal would offer the opportunity for extended transition arrangements for Invergowrie Primary P7 pupils transferring to their catchment secondary school (Perth High School) in Perth and Kinross Council. Currently, some pupils attending Invergowrie Primary School do not access the full transition programme experienced by their peers in other primary schools associated with their catchment secondary school in Perth and Kinross Council because they choose to attend a school in another Local Authority.
- 1.3.7 The proposal would allow all associated Perth High School primary schools to work in the same formalised and planned way in aspects of learning, teaching and the curriculum directed by Perth and Kinross Council. This would ensure improved continuity and progression for pupils' learning, without the need for Invergowrie Primary School staff to work between two secondary clusters and Local Authority education strategies.
- 1.3.8 If all Invergowrie Primary School pupils are to attend Perth High School as their designated Perth secondary school, they could potentially, subject to successful planning applications and consultation, attend a new purpose-built school in the future which would provide accommodation for up to 1600 pupils. Invergowrie pupils would have an opportunity to attend a secondary school that has adequate space and is not over capacity, thus leading to an improved overall educational experience.
- 1.3.9 Pupils attending the new Perth High School could benefit from a modern state of the art school with purpose built and varied teaching accommodation conducive to the promotion of relevant and engaging educational experiences for young people.
- 1.3.10 A strong identity with the Perth High School community could be fostered through accessing a range of sporting and cultural activities which provide opportunities for young people to expand friendship groups and develop increased confidence.
- 1.3.11 The statutory walking distance to school is three miles for children aged 8 or over from a child's designated school. The distance from the school is measured as the nearest available route. Education Authorities are required to make such arrangements as they consider necessary for school pupils residing and attending schools in their area therefore, in the event of Invergowrie Primary pupils requiring to travel to their catchment school in Perth and Kinross Council, they would be entitled to travel assistance. Travel implications for Invergowrie Primary School pupils would require to be addressed by Perth and Kinross Council.

1.4 The revision of catchment areas for Ancrum Road Primary School, Blackness Primary School, Camperdown Primary School, Tayview Primary School and Victoria Park Primary School

EDUCATIONAL BENEFITS FOR ANCRUM ROAD PUPILS

- 1.4.1 To meet the current needs of families, we are working very hard with partners to build strong community links within the Lochee Ward. These strong partnerships are beginning to have a positive impact on our children and their families according to the school's HMI Report of June 2019.
- 1.4.2 The School currently receives placing requests from families in the East End. These families would become part of the Ancrum Road catchment if the proposed changes take effect. Changing the catchment to include more of Lochee, would allow families with children to have direct access to their local school and expanding the school community.
- 1.4.3 The school continues to develop its community benefits and create educational and community spaces to enable engagement with families and the local community. The established kitchen/family room and community could be utilised by local children, families and the east end of the Lochee Ward to enhance and support family learning, family cooking, Columba 1400 workshops, provide a drop-in facility with School and Family Development Workers and create an inclusive community identity.
- 1.4.4 Data is showing that, in some areas, Ancrum Road Primary School is beginning to close the poverty related attainment gap and that their overall attainment is also improving. Part of this is due to the interventions within Health and Wellbeing/Ethos of the school, which have been put in place. Having more families from the community of Lochee attend the school would provide greater opportunities to expand their community benefits programmes.
- 1.4.5 The school's very strong links with all their partner primary cluster schools as well as Harris Academy would be facilitated to maintain and grow, with all schools catering more for their identified communities' needs.

EDUCATIONAL BENEFITS FOR BLACKNESS PUPILS

- 1.4.6 A potential reduction in the Blackness primary school roll would create space for learners to engage in a wider range of opportunities for digital and active learning, physical education, team work and group and practical activities in line with the learning intentions as set out in Curriculum for Excellence.
- 1.4.7 An increase in available communal space would support work with partners and other agencies thus offering a wider range of experiences for pupils to develop skills for learning, life and work.
- 1.4.8 A stable roll would allow for more flexibility in the use of space such as the hall and dining area during break and lunchtime - freeing up staff to undertake extra-curricular activities in addition to supervision duties.

EDUCATIONAL BENEFITS FOR CAMPERDOWN PUPILS

- 1.4.9 As a result of the potential proposals, the school roll will be maintained at a level which, over time, will not have a detrimental impact upon teaching and learning experiences of the young people in the school

EDUCATIONAL BENEFITS FOR TAYVIEW PUPILS

- 1.4.10 Pupils who would be in the Tayview catchment area have access to a newly built school with a range of facilities that support learning within Curriculum for Excellence. An increase in pupil numbers will enable the school to utilise more of the available teaching space and also increase the amount of learning opportunities and experiences available to young people as a result of an increased pupil roll and subsequent increase in staff numbers leading to a broader staff skill set.

EDUCATIONAL BENEFITS FOR VICTORIA PARK PUPILS

- 1.4.11 Making catchment area changes to place the school within the catchment area it serves would be beneficial to pupils as would the positive partnerships they have developed in their local community with local businesses and a wide range of local community groups.
- 1.4.12 Outdoor learning, including using local greenspace and road safety/safe routes to school activities, would be relevant to the area in which the pupils live.
- 1.4.13 Curriculum for Excellence entitlements would be supported by the opportunity to serve the community in which it resides, promoting wider achievement in the community, enabling links to develop skills for learning, life and work in the community in which the pupils live and learn.
- 1.4.14 Victoria Park Primary School does not currently sit within the catchment area it serves. It currently receives a large number of placing requests from families outside its catchment area. None of the residences within the current locality of the school are in its catchment area which is confusing for pupils and families. The proposal would address this and result in a greater majority of young people living within the catchment area of the primary school they attend.
- 1.4.15 All schools have established purposeful links with parents and the local community across the West End Ward. The realignment of Victoria Park and Blackness Primary School will mean that the Victoria Park will now serve and exist within its own primary school catchment boundary and create the opportunity for the school to build its identity within the heart of its community.

EDUCATIONAL BENEFITS FOR PRIMARY SCHOOLS AFFECTED BY THESE PROPOSALS

- 1.4.16 The proposals will ensure that more children are zoned to a school that is closer to their home which, in turn, will encourage more parents to let their children walk to and from school.
- 1.4.17 The revised catchment areas reflect a more logical split which parents will find much easier to understand. The proposals will contribute to the council's commitment to reduce its carbon footprint by reducing the number of parents dropping their children off at school by car.
- 1.4.18 If no action is taken to amend catchment areas then it will not be possible for all the primary schools to accommodate all children residing within their catchment area over the coming years, providing great uncertainty for children and their families regarding their primary school education.
- 1.4.19 In each of the options proposed for consideration, the changes to existing catchment areas would ensure a more equitable distribution of pupils across the schools that would ensure viable, sustainable pupil rolls for all, whilst retaining sufficient flexibility to support a variety of learning and teaching approaches aligned to the Curriculum for Excellence.
- 1.4.20 By ensuring that all primary schools have a viable and sustainable pupil roll, effective teacher staffing levels would be maintained, led by a range of promoted teaching staff. Effective year group classification would be maintained and children would be able to learn within a variety of peer group opportunities.

- 1.4.21 As there are no planned changes to the general use of the schools involved, there would be no detriment to the schools themselves or those using the existing facilities of the schools.
- 1.5 A report from Education Scotland is required under the terms of the Act to address the educational aspects of the proposal. The report is attached as Appendix 2.
- 1.5.1 In relation to the proposal to remove Invergowrie Primary School as an associated school of Harris Academy, the report emphasises the significant challenges for the council in dealing with the projected rising pupil population. The Education Scotland report, quoting from the proposal paper, points out that 20% of the current school roll is made up of non-catchment pupils.
- 1.5.2 Dundee City Council acknowledges the current make-up of the school roll and would also wish to clarify that these non-catchment places were granted when the school still had capacity. The future projection data, however, is based on Priority 1 pupils only, where the numbers increase significantly over the next 5 years and will lead to an unmanageable over capacity issue if not addressed.

The report concludes as follows:

“Harris Academy is facing considerable challenges relating to capacity as demand for S1 places increases. The proposal to remove Invergowrie Primary School’s status as an associated primary to Harris Academy has a few educational benefits for the children and young people in the Harris Academy catchment area. A reduction in the roll at Harris Academy has the potential to reduce class sizes and relieve the pressure on existing accommodation. Any reduction on numbers would offer more flexibility and improve opportunities for the delivery of a wider range of educational and social activities. Whilst the proposal will relieve some pressure, it does not fully resolve the wider future capacity challenges highlighted. Dundee City Council should continue to engage with key stakeholders including Perth and Kinross Council, parents, school leaders and staff, to consider the viability of the alternative solutions raised by stakeholders as part of the consultation process. Should the proposal go ahead the council should reconsider its timescale of August 2021. This will allow Invergowrie children and families to better prepare for change. In its final consultation report, the council will need to set out the actions it has taken to address any alleged omissions notified to it.”

“The proposal to revise the catchment areas of Ancrum Road, Blackness, Camperdown, Tayview and Victoria Park primary schools is of clear educational benefit. More appropriate and distinct boundaries would be in place. Proposed changes should enable schools to better serve their local communities and address any potential capacity issues. Schools will be able to build community links within clearly defined catchment areas. The proposal delivers best value by addressing capacity issues within the primary schools’ estate. In taking forward the proposal, concerns raised by stakeholders relating to safe travel and sibling access after August 2021, should be addressed.” (See Appendix 1 page 18)

- 1.6 The Executive Director has carefully considered the implications arising from the consultation process in general and the Education Scotland report, in particular where the report highlights specific issues raised during the consultation period. It should be noted that the report and the general response to the second proposal to change the catchment areas of Ancrum Road, Blackness, Camperdown, Tayview and Victoria Park Primary Schools was positive. In relation to the first proposal, our projections suggest that the removal of Invergowrie Primary School as an associated school will provide a potential solution to capacity issues for Harris Academy. The decision to remove Invergowrie Primary School will also provide greater flexibility for Dundee City Council in future decision making in regards to Harris Academy. As well as providing this, the removal of Invergowrie Primary School provides greater long-term stability for the families of Invergowrie in allowing Invergowrie Primary School to develop a closer relationship with Perth High School which is also the school’s associated secondary.

It is recommended, therefore, that both proposals in the consultation be taken forward.

2 CONSULTATION

As a result of the committee decision, the Executive Director carried out the consultation procedures in terms of the Schools (Consultation) (Scotland) Act 2010 in respect of the proposal. The consultation programme is detailed in paragraph 2.1 below, and a summary of the main points raised is set out in section 3.

2.1 Consultation was undertaken between the following dates, 10 February to 27 March 2020, 17 August to 4 September 2020 and 18 November to 9 December 2020.

The formal consultation procedure included:

- giving notice of the proposals to the Parent Council of the affected schools (10 February 2020)
- giving notice of the proposals to the parents of pupils at the affected schools, and the parents of pupils expected to attend the affected schools within two years of the date of publication of the proposal paper (10 February 2020)
- giving notice of the proposals to the pupils at the affected schools (10 February 2020)
- giving notice of the proposals to the staff at the affected schools (10 February 2020)
- giving notice of the proposals to Trades Unions representing staff at the affected schools (10 February 2020)
- giving notice of the proposals to relevant Community Council's (10 February 2020)
- giving notice of the proposal to Local Community Planning Partnerships (10 February 2020)
- publication of the proposal on the Dundee City Council website (10 February 2020)
- an announcement of the proposal in the local press and relevant social media, inviting any person to make written representation to the Executive Director (10 February 2020)
- a public meeting in the local area (26 February 2020)
- Online engagement during a 3-week period between 17 August to 4 September 2020 following the consultation pause on 20 March 2020 resulting from the COVID-19 pandemic.
- A further period of consultation following publication of a revised proposal paper resulting from feedback from consultees (18 November to 9 December 2020)

2.2 A summary note of all meetings held during the consultation period outlining questions asked is attached as Appendix 3 and the Children and Families Service responses have been added.

CONSULTATION FEEDBACK IN RELATION TO THE PROPOSAL TO REMOVE INVERGOWRIE PRIMARY SCHOOL'S STATUS AS AN ASSOCIATED PRIMARY TO HARRIS ACADEMY

- 5.7 Fifty-five written representations were received on the Invergowrie proposal during the consultation period. A thematic summary of written submissions received from parents/carers, citizens, organisations from Dundee and Perth and Kinross Council is attached as Appendix 4.
- 5.8 Nine written submissions received in relation to Invergowrie were submitted by parents, carers, young people and residents from Dundee.
- 5.9 Forty-two written submissions were received from parents, carers, young people and residents from Perth and Kinross. Four additional submissions were received from organisations as follows: Harris Parent Council, The Executive Director of Education and Children's Services Perth and Kinross Council, Invergowrie Parent Council and the Western Gateway Community.
- 5.10 Submissions were received from seven of the forty-two Perth and Kinross parents, carers, young people and residents, providing additional responses to the revised proposal paper

during November and December 2020. One additional submission was also received in relation to the revised proposal paper from Perth and Kinross Council.

- 5.11 Of the Fifty-five submissions, fifty-two were against the proposal, one was for the proposal and two were neutral.

CONSULTATION FEEDBACK IN RELATION TO THE REVISION OF CATCHMENT AREAS FOR ANCRUM ROAD PRIMARY SCHOOL, BLACKNESS PRIMARY SCHOOL, CAMPERDOWN PRIMARY SCHOOL, TAYVIEW PRIMARY SCHOOL AND VICTORIA PARK PRIMARY SCHOOL.

- 5.12 The feedback has been notably positive from the engagements related to the revision of the catchment changes.
- 5.13 Seven written responses were received on the Harris catchment changes proposal during the consultation period. A thematic summary of written submissions received from parents/carers, citizens and organisations from Dundee is attached as Appendix 4.
- 5.14 Six written submissions received in relation to the Harris catchment changes were submitted by parents, carers and residents from Dundee. One additional submission was received from National Express Dundee. Of these, there was no significant objection to the proposal as the overall amount of submissions were small in number- Two for the proposal, Four against and One neutral response.
- 5.15 Visual and written descriptions of the proposed new boundaries are outlined in Appendix 5.
- 5.16 In accordance with the Schools Consultation (Scotland) Act 2010, copies of all written representations and 'Frequently Asked Questions/Comments' were required to be submitted to HMIE for their consideration in the preparation of their report.

3.0 MAIN ISSUES ARISING FROM THE CONSULTATION, WITH RESPONSES

3.1 The removal of Invergowrie Primary School's status as an associated primary to Harris Academy from August 2021

- 3.1.1 The main issues of note arising from this part of the consultation were:

- Sibling priority and priority status
- Travel concerns including environmental issues
- After school studies, extra-curricular and out of school activities
- Relationships, Health and Wellbeing
- Projections of population and roll for Harris Academy
- Collaboration, multi-agency and cross authority working
- Identification with Dundee
- Consideration of other options
- Timescales
- Educational benefits

3.1.2 Sibling priority and priority status

Some parents from Invergowrie Primary School raised concerns about the possibility of their sibling children ending up in different secondary schools because they would no longer be Priority 1 for Harris Academy.

Dundee City Council recognised this concern as part of the consultation process and, if the proposal goes ahead, will put transitional arrangements in place to allow Priority 1 status for affected families.

It is proposed that siblings of those current catchment area pupils in August 2021 would be given Priority 1 status to attend Harris Academy as long as their sibling was also in the school at the point of enrolment.

Having looked at this in some detail, with the support of Perth and Kinross Council, based upon the information currently available, approximately 15 identified young people will fall into this category over a six-year period from the proposed implementation date.

Perth and Kinross Council both acknowledged and welcomed this element of the proposal.

3.1.3 Travel concerns including environmental issues

The majority of responses received raised concerns around the additional length of time young people would spend travelling to/from Perth High School during the school day. They cited concerns linked to the prolonged time on school transport in addition to COVID 19 related issues. A few consultees also raised concerns about the environmental impact of the proposal at a time of declared climate emergency.

Dundee City Council does not provide school transport for any young people who live outside Dundee. This policy will continue. In the event of the proposal going ahead, Dundee City Council would undertake discussions with Perth and Kinross Council on possible transport arrangements to share any revised travel plans with stakeholders as soon as possible.

Although Invergowrie Primary is not listed as a Scottish Government rural primary school, we would accept that there will be transport requirements and incur a longer journey time due its distance from Perth however Harris Academy is a Dundee school and, due to the school capacity, the status quo can no longer continue. The opportunity for Invergowrie Primary School pupils to attend Harris Academy was a supplementary choice at a time when capacity was available, but this option is no longer viable given that Dundee City Council has an obligation to provide space within its secondary estate for children within its associated primary schools. The situation remains that core provision for secondary education needs to be met by Perth and Kinross Council and ultimate responsibility for transport arrangements rests with them also.

Irrespective of this proposal going ahead, Perth and Kinross Council pupils still have the opportunity to apply to any Dundee secondary schools which have capacity and would welcome any Invergowrie parents making such a request.

It is acknowledged by Dundee City Council that there will be an increase in Co2 emissions resulting from additional transportation requirements by Perth and Kinross Council in order for Invergowrie Primary School pupils to access their designated secondary provision, Perth High School. Whilst this is not desirable, there is no alternative solution which would enable Dundee City Council to manage its secondary school estate capacity within the west of Dundee. Any potential increase to Co2 emissions could be reduced if parents wished to make placing requests to other schools in Dundee.

3.1.4 Afterschool studies, extra-curricular and out of school activities

Many of the parents/carers and young people voiced unhappiness about alleged restrictions in children's ability to access a full school experience. Given the limitations of school transport, the opportunity to engage in extra-curricular activities could be compromised, limiting their social, vocational and academic pursuits. Currently, a number of Invergowrie Primary School pupils undertake activities of a personal interest before and after school hours and it is suggested that an extended school day would curtail such activities.

Responsibility for afterschool studies, extra-curricular and out of school activities associated to the designated secondary school would be for families and Perth and Kinross Council to determine. When such activity may take place, it would be assumed that appropriate timings would be agreed in consultation with the young people who wish to participate.

3.1.5 Relationships, Health and Wellbeing

Most of the concerns raised related to the impact upon relationships and friendships which have been developed between the young people from an early age and potentially broken as a consequence of children not attending the same secondary school. Although acknowledgement was made by some consultees that new relationships could be established, they remained concerned at the viability of sustaining these if friends lived several miles away in Perth. It was suggested that both scenarios might negatively impact upon the emotional and mental health of the young people.

It is acknowledged by Dundee City Council that transition to secondary school can impact upon long standing friendships and relationships. It is also recognised that relationships break down and new relationships are formed during young people's educational journey for a variety of reasons and the school establishment is neither a barrier nor a lone factor in maintaining the continuity of these.

If the proposal was to be implemented, we are not suggesting relationships are broken as the proposal suggests all Invergowrie pupils attend the same secondary by going to Perth High School which would enable these friendships to be maintained. It should be noted that a feature which secondary schools always provide is the opportunity to create and establish new friendships and bonds due to the greater quantity and diversity of young people attending the school. It is accepted that Invergowrie pupils who reside within Dundee may attend another secondary school, however this would not prevent friendships being maintained.

These relationships have been created based upon parental choice of primary school and the proposed changes to arrangements may help to help prevent such a situation in the future. Core provision from families living within the Dundee part of the Invergowrie catchment area is currently Blackness Primary School which, for some parents, may be the reason why they chose to send their child to Invergowrie as it is significantly closer to where they reside. This proposal would enable these families to be part of the Tayview Primary School catchment area in the future, which for many is equidistant in terms of travel routes to Invergowrie Primary School.

If future circumstances change and Invergowrie grows in population, the likelihood is that the roll of the school will increase. Similar to Harris Academy, if the situation arises which results in the capacity being exceeded, like Dundee City Council have had to do in these circumstances, Perth and Kinross Council would have to consider the viability of this arrangement as their priority would remain providing places for Perth and Kinross young people in the first instance as opposed to children from Dundee.

Social community factors remain, young people have friends within the same street but they rarely all attend the same schools for a variety of reasons. This does not prevent them socialising and maintaining friendships outside of school hours.

3.1.6 Projections of population and roll for Harris Academy

Some Issues were raised about how projected pupil populations had been calculated and the difficulties in making mid to long term projections.

Whilst it is accepted that it is not possible to predict with complete accuracy future school populations, every effort has been made using the data available - such as past trends and recent Housing Land Audits to predict likely school capacities.

The projections made for recent consultation and proposals proved to be extremely accurate. An example of such was the prediction made in relation to the pupil population with Harris during the Menziesshill High School closure consultation.

The table below which is extracted from that paper, shows the projections made over a 6-year period.

	Academic Year					
	2016/17	2017/18	2018/19	2019/20	2020/21	2021/22
Roll	1320	1312	1293	1281	1282	1311

The subsequent table below shows the actual school roll based upon census data.

	Academic Year					
	2016/17	2017/18	2018/19	2019/20	2020/21	2021/22
Roll	1315	1299	1275	1290	1313	Available Sept 2021

In relation to secondary pupil populations, the data and figures are based on actual primary rolls. These rolls may change slightly over time but they do provide a relatively stable picture. The majority of placing requests made in Dundee are at the primary stage therefore, parental intentions for secondary are also clearer.

Given the recent global pandemic, potential global economic downturn and to provide further clarity on the projections based upon priority 1 pupils, the originally supplied information was further reviewed to draw as accurate projections as possible and respond appropriately to this data to support the roll of the school. This information was provided within the revised proposal paper.

3.1.7 Collaboration, multi-agency and cross authority working

Concerns were expressed by consultees that Dundee City Council were not meeting objectives set out within the Tayside and Young People Plan in relation to collaboration and joint working.

Dundee and Perth and Kinross Council have been working exceptionally closely over the past three years in relation to learning estate matter- particularly estate within the west of Dundee. The proposal regarding the removal of Invergowrie Primary School from the Harris Academy catchment area was openly shared within all consultation materials as a potential outcome of the informal consultation for the Tri-Council all through provision if that proposal was not taken forward.

Dundee, Angus and Perth and Kinross Council continue to work collegiately and have done so for some time now within the structure of the Regional Improvement Collaborative. This work has resulted in a number of collaborative engagements taking place involving representatives from schools, education services and establishments across the three local authorities. These successful events have been both supported and attended by Scottish Government ministers and organisations who have commended the good practice as exemplary for other similar collaboratives across the country.

Furthermore, a number of officer roles are currently being funded through the Tayside Regional Improvement Collaborative, to support the development and transformation of learning estate across Angus, Dundee Perth and Kinross Council's. These include project officer roles to support collegiate working practices and educational improvements.

3.1.8 Identification with Dundee

Most Perth and Kinross respondents suggested that they see themselves as Dundee residents and feel they make a considerable contribution to the city's economy.

Dundee City Council both welcomes and acknowledges that due to the close proximity to Dundee, Invergowrie residents may feel they make a considerable contribution to the city's economy, for which the Council is grateful. That said, the issue remains that because Invergowrie primary is located within another Local Authority, the responsibility for provision of education still resides with Perth and Kinross Council and not Dundee.

As noted within 3.1.3, primary the responsibility to provide education for Invergowrie children remains the obligation of Perth and Kinross Council. Dundee City Council would welcome any placing request to made by families to Dundee secondary schools

3.1.9 Consideration of other options

A number of the respondents to the consultation suggested that other options were not being put forward for consideration within this proposal, potentially limiting their ability to provide a full and comprehensive account of their views. Options suggested for consideration include:

- the re-zoning of primaries to Baldrigon Academy
- the extension of Harris Academy.
- delaying implementation of the proposal

Whilst the proposals above could provide reasonable alternatives to the removal of Invergowrie Primary School as an associated school to Harris Academy, like any alternative proposal, these may have both positive and negative implications.

Re-zoning of Invergowrie to Baldrigon Academy

The roll of Baldrigon Academy currently stands at 843 pupils.

Without factoring in the pupils from Invergowrie Primary School, it is projected that the roll over the next few years at Baldrigon Academy will steadily increase, reducing any future available capacity which may be considered.

An additional aspect for consideration of this proposal would be the travel to Baldrigon Academy, which could result in potential transportation implications for Perth and Kinross Council.

Re-zoning of other Harris Academy associated primaries to Baldrigon Academy

Dundee City Council has a primary responsibility to provide secondary provision within the locality of its associated primary schools within Dundee. Such an exercise would require further consultation, and may not be favourable to Dundee residents due to the intricacies of travel planning and the implication of changes impacting upon them resulting from estate related matters which go beyond their council boundary.

Long term, a potential move of Invergowrie Primary School's catchment to that of another Dundee secondary school could cause the same capacity related issue as would be experienced in the future by Harris Academy.

Extension of Harris Academy

Dundee City Council has demonstrated within section 1.3, Table 4 of its revised consultation paper that through implementation of the proposal, the Harris Academy roll becomes manageable, avoiding any requirement to add accommodation. If approved the proposal will

allow the Children and Families Service to implement its preferred strategy to minimise any further disruption to Harris Academy, provide stability and certainty to the pupil population within its existing site as well as to the Perth and Kinross pupils at Invergowrie Primary School and to avoid additional cost pressure to the council.

Delaying implementation of the proposal

Reference should be made to paragraph 3.1.10 below.

3.1.10 Timescale

A number of responses suggested that the timescale for implementation of the proposals was unreasonable. Their concerns were that transition to secondary started as early as P5, meaning work had already begun with young people in relation to their move to Harris.

A few consultees alluded to buying their houses on the understanding their children would undertake secondary education at Harris Academy. Dundee City Council recognises that, if more time was given to implement the proposal, stakeholders could re-evaluate their situation and respond accordingly. Although it is accepted that later implementation would allow Invergowrie families greater time to plan, the growing roll of Harris Academy does not allow much flexibility within this timescale.

That said however, the unforeseen global pandemic has caused significant delays towards the later part of this consultation process. As a result, Dundee City Council now sees the current proposed implementation date of August 2021 as unachievable and, should the proposal go ahead, we would wish to provide stability and reassurance to families of children currently in P7 at Invergowrie Primary School who have begun their transition to Harris Academy for session 2021/22.

It is therefore proposed that, should the proposal be implemented, the date of the proposal would now be for session 2022/23, from August 2022. This would affect families with children currently in P6 at Invergowrie Primary School who would be making applications for secondary school from December 2021 for the new academic session 2022/23.

3.1.11 Educational benefits

A few consultees raised concerns over the lack of educational benefits for Invergowrie Primary School pupils within the proposal paper and upon their inclusion into the revised paper they questioned the validity of these statements.

Upon seeking legal clarification on this matter, it was deemed inappropriate for Dundee City Council to suggest or propose benefits for young people who were not the direct responsibility of the Local Authority hence no such reference was made within the original proposal paper.

In response to the concerns raised above by consultees and Perth and Kinross Council, however, Dundee City Council has chosen to republish the consultation paper to include what it believes may be the educational benefits for Invergowrie Primary School pupils as a result of this proposal. These benefits were shared and discussed with Perth and Kinross Council including the offer of further addition or comment in advance of publication of the amended consultation paper.

3.1.12 The submission from Perth and Kinross Council, referred to in paragraph 2.4 sets out their views of the impact of the proposals on the Perth and Kinross pupils already in attendance at Invergowrie Primary School and those primary pupils living in Perth and Kinross who are resident in the catchment areas of, and who may be affected in the future.

Support is noted within the submission in relation to the potential enrolment of siblings of Perth and Kinross young people currently in attendance at Harris Academy by maintaining their priority 1 status.

There is also noted an acknowledgement of a number of the educational benefits set out by Dundee City Council within its revised proposal paper.

Specific areas of concern outlined in the Perth and Kinross submission included:

- Perth and Kinross Council question if this proposal is, in fact, a proposal as defined by the Act. Furthermore, they suggest that Dundee City Council should clearly set out the educational benefits, other impacts and mitigation of any potential adverse impacts for pupils attending Invergowrie Primary School as an affected school.

Reference should be made to the paragraphs below and section 3.1.11 of this report

As part of the consultation process for this proposal, Dundee City Council has carried out all of the statutory requirements. This included consultation with all affected Perth and Kinross schools and mandatory consultees.

Where appropriate throughout this report, Dundee City Council has responded to concerns and outlined where necessary, actions which it would see appropriate to mitigate and address any adverse impacts upon young people affected by the proposal.

- The proposal does not appear to clearly outline what, if any, options there might be for Perth and Kinross pupils attending Invergowrie Primary School who may not wish to transfer to Perth High School in the event of this proposal being implemented.

The responsibility for the organisation of all admission and transfer procedures for pupils living in Perth and Kinross rests with Perth and Kinross Council. Over and above any such arrangements, Dundee City Council outlines its ongoing commitment in paragraph 1.3.7 of the proposal paper to provide a Priority 1 place for siblings of those current catchment area pupils to attend Harris Academy as long as the other sibling was also in the school at the point of enrolment, maintaining this for a six-year period following implementation of the proposal.

If the proposal goes ahead, any current Invergowrie Primary School pupils who do not wish to attend Perth High School may make a placing request to another Dundee secondary school which Dundee City Council would welcome. Alternatively, they may wish to make a similar request to another Local Authority secondary school.

- It remains the view of Perth and Kinross Council that the revised Proposal Paper does not address any potential impact on young people in relation to any different travel arrangements that may arise for pupils who would not be able to attend Harris Academy, nor does it make it clear for parents what the difference would be in travel arrangements to Perth High School.

Procedures for determining the final transport arrangements are set out in paragraph 3.1.3 of this report and addressed within paragraph 1.4.11 of the revised proposal paper. Final decisions and responsibility for transport arrangements for Perth and Kinross young people rests with Perth and Kinross Council.

- This proposal, if implemented, has consequences for Perth and Kinross Council Admissions and Transfer to Secondary School policy if Invergowrie pupils were no longer given Priority 1 status to attend Harris Academy. This would require Perth and Kinross Council to review this policy and, as these proposals are covered under the Schools (Consultation) (Scotland) Act 2010, this would require Perth and Kinross Council to undertake a statutory consultation to amend these arrangements.

Dundee City Council accepts that if the proposal is agreed and Invergowrie Primary School is removed as an associated primary to Harris Academy, Perth and Kinross Council would be required to change the wording of their Admission and Transfer policy. It is acknowledged that, in order to achieve this, Perth & Kinross Council will require to satisfy the statutory requirements contained in the Schools (Consultation) (Scotland) Act 2010. It is also acknowledged that this process will be independent of the consideration of this proposal by

Dundee City Council, but it will allow Perth & Kinross Council the opportunity to engage with families and young people to understand the implications of attending the designated secondary school.

- It is noted that the implementation date of August 2021 remains unchanged in the amended Proposal Paper. Given that arrangements for P7 pupils transfer to secondary school in August 2021 are due to commence in January 2021, which is likely to be prior to a decision being taken by Dundee City Council's Education Committee on this proposal, it is not considered that this implementation date gives sufficient notice to parents of any proposed change affecting their child's choice of secondary school.

Dundee City Council has considered the views of Perth and Kinross Council and other consultees in relation to the originally proposed implementation date and the potential adverse impact this may have upon Invergowrie families. Dundee City Council is aware that transition of P7 children from Invergowrie Primary School to Harris Academy will have commenced and therefore it has been proposed within section 3.1.10 of this report that the implementation of this proposal be delayed until August 2022 for academic session 2022/23.

3.2 The revision of catchment areas for Ancrum Road Primary School, Blackness Primary School, Camperdown Primary School, Tayview Primary School and Victoria Park Primary School

3.2.1 The main issues of note arising from this part of the consultation were:

- *Association with current primary school in relation to where they live*
- *Sibling priority status and continuity for families*
- *Reconsideration of boundary line changes.*

3.2.2 Association with current primary school in relation to where they live

As a direct outcome of the proposals and as stated within the educational benefits statements, the proposals will increase associations for the primary schools within the area they serve. This will promote a greater sense of community and inclusion for the primary school, enabling the school, its ethos and resources to support and increase provision for the local area.

3.2.3 Sibling priority status and continuity for families

As stated within the proposal paper, where the young person has a sibling (as defined in our Enrolment and Placing Request Guidelines) attending the school will be given Priority 1 status providing they are still in attendance at the point of enrolment, where possible allowing continuity for families wishing their children to attend the same school.

3.2.4 Reconsideration of boundary line changes.

A few consultees request that the Boundary line be reviewed due to the impact which it had upon their specific circumstances and opportunity to attend the primary school of their choice.

The majority of consultees saw no issue with the revised catchment boundaries and most favoured the change due to the potential benefits for affected primary schools and their wider community. All families continue to have a choice as to which primary school they wish their child to attend and have the opportunity to complete a placing request for that school.

4.0 THE SCHOOL PREMISES (GENERAL REQUIREMENTS AND STANDARDS) (SCOTLAND) REGULATIONS 1967

- 4.1** The proposal meets the requirements of the above Act, and, accordingly, the Executive Director is not required to apply to Scottish Ministers for dispensation from the standards.

5.0 CONCLUSION AND NEXT STEPS

- 5.1 Having reviewed the Education Scotland Report and looked at the consultation responses in detail including those issues raised at the public meeting, it is recommended that:
- 5.2 The proposal to change the catchment areas of Ancrum Road, Blackness, Camperdown, Tayview and Victoria Park Primary School is implemented for session 2022/23, from August 2022.
- 5.3 The proposal to remove Invergowrie Primary School as an associated primary school to Harris Academy is implemented for session 2022/23, from August 2022.

Mr Paul Clancy
Executive Director of Children and Families Service

December 2020



Schools (Consultation) (Scotland) Act 2010

Report by Education Scotland addressing educational aspects of the proposal by Dundee City Council to remove Invergowrie Primary Schools status as an associated primary school to Harris Academy from August 2021 and to revise the catchment areas for Ancrum Road, Blackness, Camperdown, Tayview and Victoria Park primary schools from August 2021.

October 2020

Introduction

1.1 This report from Education Scotland has been prepared by Her Majesty's Inspectors of Education (HM Inspectors) in accordance with the terms of the [Schools \(Consultation\) \(Scotland\) Act 2010](#) ("the 2010 Act"). The purpose of the report is to provide an independent and impartial consideration of Dundee City Council's proposal to remove Invergowrie Primary School's status as an associated primary school to Harris Academy and to revise the catchment areas for Ancrum Road, Blackness, Camperdown, Tayview and Victoria Park primary schools. Section 2 of the report sets out brief details of the consultation process. Section 3 of the report sets out HM Inspectors' consideration of the educational aspects of the proposal, including significant views expressed by consultees. Section 4 summarises HM Inspectors' overall view of the proposal. Upon receipt of this report, the Act requires the council to consider it and then prepare its final consultation report. The council's final consultation report should include this report and must contain an explanation of how, in finalising the proposal, it has reviewed the initial proposal, including a summary of points raised during the consultation process and the council's response to them. The council has to publish its final consultation report three weeks before it takes its final decision.

1.2 HM Inspectors considered:

- the likely effects of the proposal for children and young people of the schools; any other users; children likely to become pupils within two years of the date of publication of the proposal paper; and other children and young people in the council area;
- any other likely effects of the proposal;
- how the council intends to minimise or avoid any adverse effects that may arise from the proposal; and
- the educational benefits the council believes will result from implementation of the proposal, and the council's reasons for coming to these beliefs.

1.3 In preparing this report, HM Inspectors undertook the following activities:

- attendance at the public meeting held on 26 February 2020 in connection with the council's proposals;
- consideration of all relevant documentation provided by the council in relation to the proposal, specifically the educational benefits statement and related consultation documents, written and oral submissions from parents and others; and
- virtual visits to the sites of Invergowrie, Ancrum Road, Blackness, Camperdown, Tayview and Victoria Park primary schools and Harris Academy, including discussion with relevant consultees.

Consultation process

2.1 Dundee City Council undertook the consultation on its proposal(s) with reference to the [Schools \(Consultation\) \(Scotland\) Act 2010](#).

2.2 The consultation process began on 10 February 2020 and was due to end on 27 March 2020. A public meeting was held on 26 February 2020. With schools across the country closing as a response to the spread of Covid-19, the council was unable to complete the consultation within the proposed timescale. The further public meeting planned for 16 March 2020 did not proceed. The council extended the period of consultation with a revised closing date of 4 September 2020. During the period of extension, weekly online feedback to stakeholders' questions were published on the council's website on the 24 August, 31 August and 7 September 2020.

- 2.3 The council posted the consultation documents on its website and placed an announcement within the local press. The council placed copies of the proposal at its head office, in all of the affected schools and local libraries. The meeting held on 26 February 2020 was attended by 55 stakeholders. Participants had the opportunity to view proposals and to engage with council officers around details. All of the stakeholders present did not support the proposal to remove Invergowrie Primary School's status as an associated primary school to Harris Academy. The main areas of concern raised included the increase in travel distance, resulting increase in carbon footprint and splitting of established friendship groups. Participants did not make any reference to the proposal to revise the catchment areas for Ancrum Road, Blackness, Camperdown, Tayview and Victoria Park primary schools.
- 2.4 With regard to the proposal to remove Invergowrie Primary School's status as an associated primary school, the council received submissions from 55 stakeholders. Of these, 52 were against, one was in favour and two were neither for nor against. Respondee expressed the view that alternatives to the proposal should be actively sought and considered. Key objections included: the increase in travel time and distance, increased carbon footprint, reduced opportunities for children to walk or cycle to school and splitting up of long-established friendship groups. The loss of Invergowrie's long-established association with the west end of Dundee both in educational and community terms was also cited as a concern.
- 2.5 Additional submissions were received from Harris Parent Council, Invergowrie Parent Council, and Perth and Kinross Council. These were all against the proposal to remove Invergowrie Primary School's associated status. Harris Parent Council and Invergowrie Parent Council's did not think the proposal addressed future capacity issues and wanted alternative solutions to be found. Perth and Kinross Council in its submission acknowledged that Dundee City Council has no legal duty to make education provision for pupils living in Perth and Kinross. It also requested clarification if the option might exist for young people from Perth and Kinross to attend another secondary school in Dundee. A further submission from the Western Gateway Community requested to be included in the catchment area for Harris Academy rather than the existing catchment secondary of Baldragon Academy.
- 2.6 The council received seven submissions with regard to the proposal to revise the catchment areas for Ancrum Road, Blackness, Camperdown, Tayview and Victoria Park primary schools. Of these, two were in favour of the proposal, four against and one was neutral. Key concerns related to the future status of sibling's entitlement to attend the same school and safe travel to school.

Educational aspects of proposal

- 3.1 Harris Academy is a modern non-denominational secondary school located in the west end of Dundee. Harris Academy's roll for session 2019-20 was 1,290. Currently, 961 of the 1,290 roll reside in the Harris catchment area. A further 76 attend through association from Invergowrie Primary School. This leaves 253 - approximately 20% of pupils living outside the catchment for Harris Academy and Invergowrie Primary School.
- 3.2 Invergowrie Primary School is located within Perth and Kinross Council. Currently, a cross-boundary agreement permits families whose child attends Invergowrie Primary School and reside within the Invergowrie Primary School catchment area, to apply to attend Harris Academy for S1 on a priority 1 status. This agreement has operated from before local government re-organisation in 1996. Children attending Invergowrie Primary School also have priority 1 status to attend their allocated Perth and Kinross secondary school, Perth High School. Currently, 38 children from Dundee outwith the Invergowrie catchment area attend Invergowrie Primary School. In August 2020, 25 P7 children from Invergowrie Primary School transitioned to Harris Academy.
- 3.3 Dundee City Council has previously engaged in extensive discussions with neighbouring council's relating to the provision of education in the west of Dundee.

- 3.4 The rationale for the proposal to remove Invergowrie Primary School's status as an associated primary to Harris Academy is based upon the projected future pupil intake for Harris Academy and S1 roll being un-sustainable. These projections take account of new housing developments, increased placing requests and an anticipated increase in pupil population within the city. This adds pressure to the demand for places in Harris Academy and potentially generates over capacity issues.
- 3.5 Recent changes to primary provision within Dundee have resulted in the co-location and amalgamation of some primary schools. Many of these schools are in new build facilities constructed in different locations. As a result, a realignment of primary catchment areas is proposed. This will enable schools to better serve their local communities and address any potential capacity issues.
- 3.6 The proposal to remove Invergowrie Primary School's status as an associated primary to Harris Academy has a few educational benefits for the children and young people in the Harris Academy catchment area. Harris Academy is facing considerable capacity challenges. The reduction in the roll at Harris Academy, should the proposal go ahead, has the potential to only partially reduce class sizes and relieve the pressure on existing accommodation. Any increase in space would offer more flexibility and improve opportunities for the delivery of a wider range of educational and social activities.
- 3.7 Overall, the proposal to revise the catchment areas of Ancrum Road, Blackness, Camperdown, Tayview and Victoria Park primary schools is of clear educational benefit. Proposed changes will enable schools to better serve their local communities and address any potential capacity issues. The proposal delivers best value by addressing capacity issues within the primary schools estate. Victoria Park Primary School will be located within its own catchment area. Schools will be able to build community links within clearly defined catchment areas. A few stakeholders raised concerns relating to sibling access after August 2021, particularly where older children have been allocated a place through a placing request, others raised the issue of safe travel to schools.
- 3.8 All the children, parents and carers from Invergowrie Primary School who met with HM Inspectors were opposed to the proposal to remove Invergowrie Primary School's status as an associated primary school to Harris Academy from August 2021. The main objections included the increase in travel distance and carbon footprint and splitting of established friendship groups. Children's ability to engage in after school sporting activities locally could be reduced. The lack of reference to children attending Invergowrie Primary School within the educational benefits statement in the proposal was noted by parents. They were of the view that alternative solutions were available and that these should be pursued by Dundee City Council and Perth and Kinross Council before progressing the proposal.
- 3.9 Senior Leadership Team members from Invergowrie Primary School who met with HM Inspectors recognised there would be potential benefits for Dundee City Council. They recognised the capacity issues faced by Harris Academy and the rationale for the proposal to remove Invergowrie Primary School as an associated primary. Invergowrie Primary School enjoys a positive relationship with Harris Academy and is an active member of the Harris cluster. The additional travel incurred would reduce the opportunities for children to walk or cycle to school or to engage in out of school activities, many of which are located in Dundee.
- 3.10 Young people, parents and staff from Harris Academy who met with HM Inspectors were not supportive of the proposal to remove Invergowrie Primary School's status as an associated primary school to Harris Academy from August 2021. Whilst the proposal would reduce the S1 intake, it would not in itself address the wider capacity challenges the school faces. Pressure on social space was a particular area of concern. Young people from Invergowrie make a much-valued contribution to the social and academic life of Harris Academy. This would be missed. Young people felt that their peers from Invergowrie would be less able to engage in after school activities due to the time spent on additional travel. All respondents expressed the view that alternative options and timescales should be actively considered.

Young people were of the view that Perth and Kinross Council should actively contribute to any future solution.

- 3.11 Senior Management Team members from Ancrum Road, Blackness, Camperdown, Tayview and Victoria Park primary schools who met with HM Inspectors were supportive of the proposal to remove Invergowrie Primary School's status as an associated primary school to Harris Academy from August 2021. They recognised the negative impact this would have on Invergowrie children in terms of additional travel and loss of the historical association with Harris Academy. However, they believed priority for Harris Academy places should be for Dundee children.
- 3.12 Most children, teaching staff, parents and carers from Ancrum Road, Blackness, Camperdown, Tayview and Victoria Park primary schools who met with HM Inspectors were supportive of the proposal to revise their catchment areas. Clearer boundaries should enable schools to better serve their local communities and address any potential capacity issues. The number of placing requests should be reduced. Victoria Park Primary School will now be located within its own catchment area. Capacity issues at Blackness Primary School will be relieved. Schools will be able to build community links within clearly defined catchment areas.
- 3.13 During the consultation period, consultees identified alleged omissions in the proposal, namely the lack of reference within the educational benefits statement to set out the impact of the proposal on Invergowrie Primary School children.

Summary

Harris Academy is facing considerable challenges relating to capacity as demand for S1 places increases. The proposal to remove Invergowrie Primary School's status as an associated primary to Harris Academy has a few educational benefits for the children and young people in the Harris Academy catchment area. A reduction in the roll at Harris Academy has the potential to reduce class sizes and relieve the pressure on existing accommodation. Any reduction on numbers would offer more flexibility and improve opportunities for the delivery of a wider range of educational and social activities. Whilst the proposal will relieve some pressure, it does not fully resolve the wider future capacity challenges highlighted. Dundee City Council should continue to engage with key stakeholders including Perth and Kinross Council, parents, school leaders and staff, to consider the viability of the alternative solutions raised by stakeholders as part of the consultation process. Should the proposal go ahead the council should reconsider its timescale of August 2021. This will allow Invergowrie children and families to better prepare for change. In its final consultation report, the council will need to set out the actions it has taken to address any alleged omissions notified to it.

The proposal to revise the catchment areas of Ancrum Road, Blackness, Camperdown, Tayview and Victoria Park primary schools is of clear educational benefit. More appropriate and distinct boundaries would be in place. Proposed changes should enable schools to better serve their local communities and address any potential capacity issues. Schools will be able to build community links within clearly defined catchment areas. The proposal delivers best value by addressing capacity issues within the primary schools estate. In taking forward the proposal, concerns raised by stakeholders relating to safe travel and sibling access after August 2021, should be addressed.

Summary note of all meetings held during the consultation period outlining questions asked

Records of Meetings



**School Estate Proposals
FORMAL CONSULTATION ACTIVITY
Engagement Sessions with Ancrum Road Staff
Venue – Ancrum Road Primary School
12th March 2020**

Officers: Tracey Stewart Education Officer
Other Attendees: Sharon McQuillan Head Teacher

The voluntary session was attended by members of staff from the school. All conversations during the session took place in relation to Children and Families Service school estate proposals, of which formal consultation is being undertaken between 10th February and 27th March 2020.

Key observations/concerns raised:

- There were no concerns shared or raised by staff within the school regarding the proposals.

All attendees were made aware that their views would be collated into a consultation report to help inform final decisions regarding the proposals. Views out with the meeting could also be shared via email and written response as indicated within the consultation materials to Children and Families Service.



**School Estate Proposals
FORMAL CONSULTATION ACTIVITY
Engagement Sessions with Ancrum Road Pupils
Venue – Ancrum Road Primary School
4th September 2020**

Other Attendees: Sharon McQuillan Head Teacher

Selected pupil groups took part in the session.

All conversations during the session took place in relation to Children and Families Service school estate proposals, of which formal consultation is being undertaken between 10th February and 27th March 2020.

Key observations/concerns raised:

The Head Teacher spoke with the pupils regarding the proposed changes to the catchment. They did not have any concerns regarding the changes.

All attendees were made aware that their views would be collated into a consultation report to help inform final decisions regarding the proposals. Views out with the meeting could also be shared via email and written response as indicated within the consultation materials to Children and Families Service.



**School Estate Proposals
FORMAL CONSULTATION ACTIVITY
Engagement Sessions with Blackness Pupils
Venue – Blackness Primary School
4th September 2020**

Other Attendees: John Hughes Head Teacher

P7 pupil groups took part in the session.

All conversations during the session took place in relation to Children and Families Service school estate proposals, of which formal consultation is being undertaken between 10th February and 27th March 2020.

Key observations/concerns raised:

Class teachers spoke with the pupils regarding the proposed changes to the catchment. The pupils didn't have many or any big concerns however they did focus on siblings and their ability to attend the same school as them and that they could also transition to the same secondary school.

The also felt it would be helpful if the school was less busy.

All attendees were made aware that their views would be collated into a consultation report to help inform final decisions regarding the proposals. Views out with the meeting could also be shared via email and written response as indicated within the consultation materials to Children and Families Service.



**School Estate Proposals
FORMAL CONSULTATION ACTIVITY
Engagement Sessions with Blackness Staff
Venue – Blackness Primary School
4th September 2020**

Other Attendees: John Hughes Head Teacher

School staff took part in the session.

All conversations during the session took place in relation to Children and Families Service school estate proposals, of which formal consultation is being undertaken between 10th February and 27th March 2020.

Key observations/concerns raised:

Reduction in pupil numbers would be a positive, currently the school is running at approximately 390 pupils and every spare space is being used.

Some staff are having to work from home as there is nowhere else for them to base themselves when not involved in class contact.

The current COVID Pandemic has made this increasingly more challenging with space.

The school is having to seek additional space elsewhere to delivery curricular elements such as music and drama.

All attendees were made aware that their views would be collated into a consultation report to help inform final decision regarding the proposals. Views out with the meeting could also be shared via email and written response as indicated within the consultation materials to Children and Families Service.



School Estate Proposals
FORMAL CONSULTATION ACTIVITY
Engagement Sessions with Camperdown Pupil Voice
Venue – Camperdown Primary School
4th September 2020

Other Attendees: Nicola Weryk Headteacher

Pupils from P5- P7 Classes took part in the sessions, those represented were **pupils**. All conversations during the session took place in relation to Children and Families Service school estate proposals, of which formal consultation is being undertaken between 10th February and 27th March 2020.

Key observations/concerns raised:

The class teachers spoke with the older classes in the school regarding the proposed changes to the catchment. They didn't have much comment however two key elements came from the pupils during these discussions.

- They wanted to ensure that they would still be able to attend Harris and the changes would not affect them.
- They hoped that Camperdown would still be busy and this would not result in less pupils going to the school.

All attendees were made aware that their views would be collated into a consultation report to help inform final decisions regarding the proposals. Views out with the meeting could also be shared via email and written response as indicated within the consultation materials to Children and Families Service.



**School Estate Proposals
FORMAL CONSULTATION ACTIVITY
Engagement Sessions with Staff
Venue: Camperdown Primary
12th March 2020**

Officers: Fiona Low, Education Officer

Other Attendees: none

3 individuals attended the session, those represented were **staff**

All conversations during the session took place in relation to Children and Families Service school estate proposals, of which formal consultation is being undertaken between 10th February and 27th March 2020.

Key observations/concerns raised:

- All 3 members of staff saw the logic behind the changes in catchments
- Proposal will ensure a relatively static roll
- School seems to be struggling for accommodation
- No reduction may put additional strain on resources

All attendees were made aware that their views would be collated into a consultation report to help inform final decision regarding the proposals. Views out with the meeting could also be shared via email and written response as indicated within the consultation materials to Children and Families Service.



School Estate Proposals

FORMAL CONSULTATION ACTIVITY

**Engagement Sessions Harris Academy and Primaries Public Meeting
Venue: Harris Academy**

26th February 2020 7pm

Officers: Andy MacGregor, Education Officer, Tracey Stewart, Education Officer (note taker), Angela Innes, Education Officer, Paul Clancy Executive Director, Pam Nesbitt Education Manager, Gordon Laidlaw Project Officer.

Other Attendees: Barry Millar Head Teacher

55 attended the session, those represented were **parents/carers/young people/members of public.**

Meeting commenced at 7.01 pm.

Gordon Laidlaw welcomed everyone to the meeting and outlined his role within the TRIC and the purpose of the consultation. As a result of committee approval, formal consultation was being undertaken and there were two strands this evening –

The proposal to:

Remove Invergowrie Primary School's status as an associated primary to Harris Academy from August 2021

The revision of catchment areas for Ancrum Road Primary School, Blackness Primary School, Camperdown Primary School, Tayview Primary School and Victoria Park Primary School from August 2021

He then went on to introduce Paul Clancy, Executive Director of Children and Families service and Pam Nesbitt, Education Manager (west).

Mr Clancy gave the presentation on the proposals – making it clear that we are here to listen and include anything in the consultation report.

Firstly, he outlined the proposals which are set out in the consultation paper.

Projections – outline plans and increase in primary roll Harris could be 1480, there is an issue with overall capacity of Harris that needs to be addressed and redress the balance of its associated primaries. Blackness could go to 124% capacity in the future and this would not be feasible. Currently over 150 young people attend Ancrum Road Primary School yet live in the Camperdown catchment area, realignment could make sense of the areas, increasing the amount of families living within their local schools catchment area.

Consultation process – we are guided by the Schools (Consultation) (Scotland) act 2010.

Mr Clancy outlined the capacity of Harris Academy – by 26/27 it could be between 1,426 and 1,486 – neither amount of pupils would be able to fit in a building built for 1309.

Siblings of those current catchment area pupils would be priority 1 if the sibling is still in the school e.g. Siblings (brothers and sisters) of those current catchment area pupils attending the proposed

primary schools in August 2021 would be given priority 1 status to attend the same primary schools as long as their sibling was also attending the school at the point of enrolment.

Mr Clancy then outlined the position regarding the Tri-Council school, this could have been a solution to accommodate pupils from Invergowrie and they could have attend that school instead of Harris however unfortunately this option was no longer being pursued. This meant we then had to look at other options in relation to the Harris school roll.

Open to questions to the public:

Question: What number of pupils attend Harris out with catchment and how many can you take into S1, how does that work through to the years.

Answer: PC -206 out with the catchment. Last year 234 catchment young people who enrolled in S1 were priority 1. 240 is normally the amount of young people we can take into S1 so you would have 960 pupils between S1 -S4 then you add on those that stay on for S5 and S6, which are normally a percentage of the year groups. Our focus is on priority 1s and have only used these to calculate the new S1s. All figures in the tables are priority 1.

Question: Does that mean no placing requests going forward if all projections based on priority 1.

Answer: Our priority scheme is open and transparent, we would apply this if any places were available. Projections we have for Harris are all priority 1s. In years gone by there have been spaces but these have reduced with the increase in Priority 1 pupils. Going forward there may be no space for anything other than priority 1.

Question: How do you justify a 20 mile trip to school lasting over 40 minutes.

Answer: PC - We need to ensure young people in Dundee have places and schools to go to, if we can provide other spaces for those outside Dundee, we would based upon their priority status.

Question: SNP voting – how can they justify splitting up children? how can SNP justify this?

Answer: PC - This is a real live problem which I am trying to find ways around so if anyone has other ideas to resolve the capacity issue I am open to listen to them.

Suggestion: What about the Tri-council school?

Answer: PC – The Tri-school can only proceed with the backing of all three council's.

Suggestion: What about Harris Academy, can't you make it bigger – this school has not been built for its capacity.

Question: Rebuild Menzieshill High?

Answer: PC - No we cannot.

Question: Can pupils go to any other school?

Answer: PC - We were looking at that with the Tri--school but that is not going ahead – we don't have enough population for a new secondary school just for Dundee.

Question: Could the numbers change?

Answer: PC - trends will go up and down – Harris has dipped in last couple of years but it is increasing again with more children anticipated from its primaries.

Question: should boundaries of other Dundee secondary schools be moved as well?

Answer: PC - A good question but limited scope – nothing to East – Morgan is full, the only school is Baldragon which has capacity but that will be filled over the next few years with young people from the Western Gateway.

Statement: Can't you move some of the Dundee primaries to a different secondary schools – for example Ancrum and Camperdown could go to Baldragon.

Question: I'm not hearing what is best for the children – transition to secondary starts from P5, that's what the government says.

Answer: PC - is your suggestion to delay change for 2 years?

Reply: Yes absolutely

Answer: PC - Where would we draw the line?

Reply: Transition is recommended to start at P5 so that's what you should be doing.

Answer: PC - Your points will be noted.

Question: This is my best friend; we have been best friends since before we went to school – we are going to be separated and it will be heart-breaking. We want to know why Dundee is allowed to go to Invergowrie and why Invergowrie not allowed to go to Dundee City Council

Answer: PC - Each council sets its own placing requests, but you have made very good point and we are going to be doing work in schools to make sure the children have a voice.

Question: You will split up friendships and why do you want me to go to school over 20 miles away when I think I live in Dundee.

Answer: PC – Just as an example, I was a pupil of McAlpine Primary School – the school did split and I had to leave my friends because some went to Rockwell and some went to Kirkton and I did make new friends. In terms of the 20 miles – there is just not enough space at Harris, if there was we wouldn't be putting this forward. I don't want you to have to travel but we can't get everyone into Harris Academy.

Question: Do you care about the environment?

Answer: PN – Yes.

Reply: Because of the buses – they will make more bad fumes and it isn't good for our planet.

Answer: PN - We will note this as a good point to make around transport and carbon emissions

Questions: What will you do with all the information?

Answer: PN - this is a formal consultation and a report will be written and will cover all viewpoints being raised then councillors will consider the information and make a decision.

PC reiterated that any ideas are welcomed, We will need to come to a view and as Mrs Nesbitt said the councillors will make final decision.

PN – there are other meetings which will take place with parents, pupils, and other consultees to get their views as well.

Question: Are you consulting in Invergowrie Primary?

Answer: PC – unfortunately no, we can't go into a Perth and Kinross Council school although we have sent out the proposal to Perth and Kinross council and welcome any responses . All are welcome to Public meetings.

Question: So there are no consultations meeting around Invergowrie

Answer: We can't go into Perth and Kinross schools, only they can speak to their schools.

Question: All the children here grew up in Invergowrie but feel they are from Dundee – they go to clubs in Dundee. A bus journey an hour each way is a lot and they will find it difficult to go to clubs or activities in Dundee because of the distances they are travelling and they will also be very tired from the additional journeys. They don't know Perth have no connections with Perth. It's all about a line that was drawn years ago by who knows but I don't care – this is ruining lives of children.

Answer: You need to address this with PKC in proper forum, at the moment this is the way Scotland is divided.

Statement: You wouldn't be doing this if Invergowrie sat in Dundee.

Statement: We bought our property as we knew our children would go to Harris.

Statement: To allow our children to stay with their friends we would move and you are only giving 12 months to sell the property to move into catchment – we would need longer.

Question: Priority 1 to Priority 6 – when will we know what the decision is?

Answer: PC - A paper will go to committee in June – that's the plan

Question: But it may not be June?

Answer: Depends on feedback and responses that come in but our intention is to take it to a June committee.

Question: but could be later?

Answer: PC - likely to be in June.

Question: Charleston primary and Lochee went to Menzieshill; when Menzieshill closed why didn't Camperdown go to Baldrigon?

Answer: PN – Accept Harris is a distance but felt that it was important to keep the community together. Made sense in terms of geography and believe that it was the right thing to do, that was a decision that was made through consultation.

Question: Is there an alternative school in Dundee that children could go to? if not can we apply to Harris?

Answer: Families are welcomed to make a placing request.

Question: But we will be priority 6 and Harris will be at capacity.

Answer: Normal practice will be to consider placing requests that come in if there is space. Placing requests are difficult to predict – PN gave example of how schools take in priorities including reserved places, there is clear guidelines and priorities. Again all depends on numbers coming in as priority 1.

Question: When capacity will be reached we won't get place in a secondary school.

Answer: By 2030 – capacity from the Western Gateway will be taken up in Baldrigon. Placing requests are the process – Baldrigon has around 300 spaces and has capacity for the next few years.

Question: Has Dundee engaged with PKC?

Answer: Gordon Laidlaw is in a post working across all 3 Local Authorities's and has been working with Perth and Kinross, we know this is an issue for Invergowrie parents but we have been given clear instructions not to go into PKC schools.

Another meeting is to come and Invergowrie can come along –most of the comments tonight have been about Invergowrie. We work closely with PKC – we hoped for the Tri-school and all we do is the best we can.

Question: There is capacity in Baldragon and 590 houses are projected to be built – what building rate time is factored in?

Answer: Based on all of the sites we have done a low estimate and high estimate but building rate is currently going quickly.

Reply: I believe construction in the Harris catchment is not moving quickly – numbers are not going up fast so likely the numbers are not right.

Answer: PC -Can't deny the full number of houses may not be built but we need to plan on the best information from City Development and I am happy to go back to City Development and consider recalculations.

Question: How would you feel about your kid going to a 2-hour journey – notorious in winter and even more delays – how would you feel if it was your child, I want an answer for all three of the panel.

Answer: PN shared a personal story through Fife. PC shared a personal story; I accept you don't live in Dundee and it's not a fair question. Where people live is down to a lifestyle choice, but right across Dundee catchments have changed over the years. The point is this affects children over time we will note the point noted on the time to change. GL shared personal story through Angus.

Question: How does Dundee view this type of thing when things can happen on a bus or just being on the bus can affects children's health – how do all 3 council's feel.

Answer: GL – can't speak on behalf of other LA's without consulting them– your point will be recorded.

Question: Can you take time to think about this, an hour journey each way is significant.

Answer: PC- again happy to consider the feedback and get back to you through the consultation.

Question: Morgan Academy 86% occupancy, Morgan get accepted into Harris currently. Looks like some adjustments could be made to make it more equal across Dundee and would make less travel. Can you look at all the catchment areas and secondary catchments.

Answer: This will be noted.

Question: Do you think people will move house to get into the school.

Answer : PC - don't know, it depends on families circumstances.

Question: If moving house were to happen will that make a problem?

Answer: Possibly, yes.

Statement: I am feeling really frustrated that people are asking questions yet don't appear to be getting answers.

Answer: That will be noted.

Statement: We would miss out on lots of clubs if we had to go to Perth school and would have less time to spend with friends

Question: In the consultation process, Education Scotland have a role in this – what role to PKC have?

Answer: They are a consultee, we would anticipate they would make a response but that's a matter for them.

Question: Could you clarify how you obtain the numbers as there is there a difference between flats and houses.

Answer: Happy to publish these.

Reply: Not getting this but is it to do with land?

Answers: Figures are robustly calculated and predicted using data from City Development – there will still be an issue with numbers even if land was not sold and houses not built.

Question: The committee report, if that gets approved will that be it or do Education Scotland get involved. Educational Benefits, where are they? I Don't see them?

Answer: If we don't act there will not be enough space for Dundee pupils, we are accepting the fact that it will affect PKC, we cannot write benefits for another authority. The role of Education Scotland happens before the final report, we need to send all consultation documents to them which they review and undertake their own engagement before providing a report with feedback.

We are addressing the Educational benefits for Harris Academy – not PKC, members of the public can comment on the final report once it has been published.

Question: If the Tri-school is out of the picture, can't you just do something with PKC?

Answer: GL- we are not able to comment but we will note the option and consider it with all other feedback.

Statement: I'm shocked and disappointed that rejigging the secondary school catchment area hasn't been considered.

Answer: Thank you for comment

Question: By the end of 7-year projected figures, what next?

Answer We can only project so far in advance, placing requests may reduce with the increase in priority 1 pupils and a combination of other factors including the number of pupils/places in primary schools, If we don't do something we won't have enough places.

Question: I question the figures and don't understand how you can justify the numbers you have projected in the slides, the amount of Invergowrie pupils is less that what you predict.

Answer: Happy to go back and look at them and clarify how they are worked out.

Gordon Laidlaw closed the meeting by thanking everyone for coming and that they have a safe journey home

Meeting ended 8.15 pm.



**School Estate Proposals
FORMAL CONSULTATION ACTIVITY
Engagement Sessions with Parent Council
Venue – Harris Academy
2 March 2020**

Officers: Tracey Stewart, Education Officer, Paul Clancy Executive Director, Pam Nesbitt Education Manager (West).

Other Attendees: Barry Millar Head Teacher, Kelly Macdonald Depute Head Teacher

8 individuals attended the session, those represented were **parents**

All conversations during the session took place in relation to Children and Families Service school estate proposals, of which formal consultation is being undertaken between 10th February and 27th March 2020.

Key observations/concerns raised:

Part of consultation: -

2 parts Invergowrie – removal and Other primary catchment changes

- Projected populations as per proposal paper. Invergowrie – no longer guaranteed Priority 1 from August 2021. Other associated primaries to control the population coming to Harris.

All Attendees were made aware that their views would be collated into a consultation report to help inform final decision regarding the proposals. Views out with the meeting could also be shared via email and written response as indicated within the consultation materials to children and families service.

Question Invergowrie is made up of Perth & Kinross and Dundee, does it make such a difference.

Answer *It will make significant difference*

Question 75% of pupils in catchment and 19% out of catchment allowed into the school?

Answer *We have been able to take other pupils over last few years but going forward only Priority 1. Numbers provided in the proposal are Priority 1 only.*

Statement It's not clear in the proposal that it is only Priority 1.

Statement The forecasting model, is it the same as Menzieshill? Could have told you it wasn't big enough.

Statement I am not trusting the numbers. We were told there was plenty of space at Harris.

Statement Friendships will be split if Invergowrie doesn't get in. Sometimes these friendships are closer than siblings.

Answer *We have been trying to pursue the Tri-school but at this point it's not going forward. The focus is Priority 1 pupils.*

- Questions Are you definitely guaranteeing the Priority 1 for siblings?
- Answer Yes
- Statement Table 5 – won't be able to cope.
- Statement Planning permissions should ask for money to build classroom extensions. Look at a developer's contribution to help resolve the problems it is making.
- Statement 590 houses are planned to be built on former council land. The council have caused it's own problem so should have a solution.
- Question Has the council considered to extend Harris.
- Answer *PC - Would be extremely difficult to build but happy to go back to the City Development to seek their views and what it would require.*
- Question Dundee was quite keen to go ahead with the Tri-party school. There has been some things in the press about a bi-school – is that a flippant remark?
- Answer *It has been mentioned and will be noted for consideration.*
- Question Why don't the 2 council's just do it?
- Answer *Would need the political will to make this happen. We tried to work on the Tri-school for 3 years, I am not to say we won't keep pursuing.*
- Question Would the Harris catchment be OK excluding the new houses? New builds should go to another school. Could they be excluded from Harris.
- Answer *We wouldn't get away with that. We are trying to solve a problem.*
- Statement Don't let them build the houses.
- Question Is GIRFEC coming into this.
- Answer *The pupils are at the top of the list, 1400 pupils is over capacity.*
- Question 1.4.1 – this proposal does not provide for this.
- Answer *Significantly lower than it would be. Parent Council noting that only a few pupils came from Invergowrie.*
- Statement Calculations if they are right in the table, Harris will be over capacity.
- Question Do you take in to consideration Denominational/Private Schooling?
- Answer *Yes. Need to look at what comes into S1.*
- Question In your proposal, you are calculating too tight. You can't do your proposal like this. We were assured the school would not be at capacity and it is.
- Answer *We are looking for suggestions. If we could get a new secondary school that would ease the pressure.*
- Question There was sufficient enthusiasm for tri-school. Why didn't you have money to keep Menzieshill open.

- Answer Harris coming in at 900 pupils with 400 places. Menzieshill had dropped in population. We closed it at an optimum level. Schools under 500/600 are difficult to run.*
- Question Can we look at what the Council is going to do to keep the school under capacity? What are the solutions in current budget?
- Answer That is something we will need to address.*
- Question No plans for housing on Menzieshill school site. What are the plans for the Council?
- Answer Can give you fact on the planning proposals which we have and can feed back in through the consultation.*
- Statement We need to have honesty.
- Question What happens to the pool of kids who have gone through all the upheaval?
- Answer They have all be appropriately support by the school staff and peers.*
- Question Has any consideration been given to environmental issues in bussing children?
- Answer We have tried to get out educational benefits. We are not allowed speak on behalf of Invergowrie – that is for Perth and Kinross Council.*
- Question It's ridiculous that you can't come to Invergowrie to speak to people.
- Answer Gordon, our officer has shared all this information with colleagues including an impact assessment for the report. Less travel involved for Dundee pupils.*
- Question Has any consideration been given to community? Dundee pupils who go to Invergowrie have bonds broken this doesn't seem to be considered.
- Answer Children make new friends but we will note in the report that there will be friendships broken. None of these things are straightforward.*
- Statement Need to get to the cause of this problem.
- Question Why are there more houses? They are being built on Council land? This is a Council problem.
- Answer There is a likelihood that we could have around 500 new houses and an increase in pupil roll – these are how we have our projections.*
- Statement Scepticism is that the figures are an underestimate.
- Statement Point was made at the last time.
- Question Will another school come out of catchment in a few years' time?
- Answer We need to continually review and need to be flexible.*
- Statement Galling thing is that there has not been good planning. Less than 6 years since Menzieshill proposal and now we are here.
- Answer Noted*
- Statement Could there potentially be boundary changes going forward.
- Statement Distance travelled should be a consideration.

Question Tri-school – why did Angus pull out?

Answer Can't comment on Angus.

Statement Mixed opportunity.

Question You have made provision for siblings, but has consideration been given for all children currently at Invergowrie, not just siblings.

Answer We will note this and look at the figures.

Question The cut off is a bit tight.

Answer Noted, We will look at this.

Question Fernbrae Site – is available for sale. There is an opportunity there. Can this be looked at?

Answer Your point has been noted.

Meeting topic closed.



School Estate Proposals

FORMAL CONSULTATION ACTIVITY

Engagement Sessions with Staff Venue: Harris Academy

9 March 2020

Officers: Gordon Laidlaw, Project Officer, Pam Nesbitt, Education Manager.

Other Attendees: none

1 individual attended the session, those represented were ~~staff/pupils/parents/carers~~
All conversations during the session took place in relation to Children and Families Service school estate proposals, of which formal consultation is being undertaken between 10th February and 27th March 2020.

Key observations/concerns raised:

The member of Staff acknowledged that they have children in Invergowrie primary school who would be affected by this proposal.

- Invergowrie pupils improve attainment within school, this statement was made by our Head Teacher.
- Invergowrie is a good catchment area for the school.
- Commitments were made in Menzieshill High closure paper that Invergowrie pupils would have Priority 1 status, other commitments in the paper were protected for 6 years, is this not the case with Invergowrie?
 - *Not sure if that was the case , would need to check.*
- This proposal affects approx. half young people in each class, as they will not retain priority status, what about friendships?
 - *We are aware that the proposal could impact upon friendships/relationships, this is unfortunate, however again this is a proposal and we are consulting to try and understand view and other opportunities/solutions.*
- Have you considered impact on extracurricular/after school clubs/supported study/walking & cycling to school/child illness, these are all problematic with a 2 hour round trip to Perth.
- This proposal goes against commitments by council to climate emergency, bigger carbon footprint by bussing pupils.
- Timescale to implement proposal is abrupt, could consideration be given to extend this, transition has already started with P5 and P6.
 - *A similar suggestion was made at the public meeting, it is noted and could be looked at.*
- More time may allow families to re-assess their position, possibly move house.
 - *As per the previous statement, it can be looked at and possibly considered.*
- Consider realigning Dundee primaries such as Camperdown to Baldragon to allow Invergowrie pupils to stay at Harris.
- Rezone Invergowrie to Baldragon?
 - *Noted, we would need to look at impact on future roll given current Baldragon catchment*

- Harris was full the day it opened, the overcapacity issue isn't going away, why not Extend Harris?
 - *Noted and will be consider along with other proposals from consultee's.*
- Mr Swinney has suggested a Bi-Council school, could this be the solution?
 - *Noted, we would need political support for this, any discussion would be at very early stages and neither council would yet understand the implications and impact of such a proposal/solution.*

All attendees were made aware that their views would be collated into a consultation report to help inform final decisions regarding the proposals. Views out with the meeting could also be shared via email and written response as indicated within the consultation materials to Children and Families Service.



School Estate Proposals

FORMAL CONSULTATION ACTIVITY

Engagement Sessions with Harris Pupil Voice Venue : Harris Academy

5th March 2020

Officers: Verity Scott, Senior Officer Locality West, Gordon Laidlaw , Project Officer
Other Attendees: None

7 attended the session, those represented were ~~staff/pupils/parents/carers~~, These were representatives of pupils voice from S1-S6

All conversations during the session took place in relation to Children and Families Service school estate proposals, of which formal consultation is being undertaken between 10th February and 27th March 2020.

Key observations/concerns raised:

What do you know

- Pupils knew about the consultation
- One pupil didn't know about changes to primary catchments, just Invergowrie

What do you think

- The changes to the catchments for Victoria Park and Blackness PS makes total sense and a clear reason for change.
- The change in catchments makes schools part of their community
- Traffic concerns regarding access to Tayview in particular
- Pupils may not be able to walk to school – mainly Tayview
- A lot of changes for a family in Invergowrie who currently can choose between Harris and Perth
- Will affect transition from P7 and friendships
- Creates more change for Harris which has recently undergone a lot of change
- Perth is a distance from Invergowrie and will mean young people travelling further to get to school. Main concern is the distance to Perth for Invergowrie young people.
- Likely to result in young people living in Invergowrie missing more school if for example they need to take time off for an appointment for a GP or dentist as likely to be in Invergowrie
- Invergowrie should be given the option to attend Baldrigon
- The catchment for Morgan should be looked at to allow Harris catchment to stay the same
- Removing Invergowrie will impact on reputation of Harris.
- Understand the logic of proposal 2 (associated primary catchment changes) but not 1 (removal of Invergowrie)

What would you like to happen

- For primary schools to be within their own community/catchment area.
- Another proposal being considered such as the option of another Dundee school i.e. Baldrigon. This would allow for comparisons.

- Don't agree with the idea that Invergowrie pupils going to Perth
- Would like Harris to stay the same to allow for the school to have a period of stability
- Make Harris bigger.

What would you like to know

- Sizes of schools – has this been taken into consideration?
 - *Officers discussed school sizes and catchments – Ref. review of the service estate – report 45-2020.*
- Why was this not highlight in the plans for the new Harris?
 - *The Harris plans changed with the addition of a few classrooms resulting from the MHS closure.*
- Where would Invergowrie go?
 - *Overview given again of the current position, Perth High School remains the PKC associated secondary.*
- What priority would the Invergowrie young people have?
 - *Priority 6 as stated in the proposal paper*

All attendees were made aware that their views would be collated into a consultation report to help inform final decisions regarding the proposals. Views out with the meeting could also be shared via email and written response as indicated within the consultation materials to Children and Families Service.



School Estate Proposals

FORMAL CONSULTATION ACTIVITY

**Engagement Sessions with Tayview Primary Staff
Venue Tayview Primary School**

10th March 2020

Officers: Michelle Lewis, Education Officer.

Other Attendees: None

NIL individuals attended the voluntary session, those represented were **staff**
All staff have previously been made aware of the proposal prior to the commencement of the consultation. In advance of the voluntary arranged meeting, which was planned for the end of the school day, staff were again advised of consultation materials.



School Estate Proposals

FORMAL CONSULTATION ACTIVITY

Engagement Sessions with Tayview Pupil Voice Venue : Tayview Primary School

10th March 2020

Officers: Michelle Lewis, Education Officer.

Other Attendees: None

8 attended the session, those represented were **pupils**, these were representatives of pupil voice from P4-P7.

All conversations during the session took place in relation to Children and Families Service school estate proposals, of which formal consultation is being undertaken between 10th February and 27th March 2020.

Key observations/concerns raised:

- One pupil thought it was not a good idea as it could mean there will be too many P1s coming in to Tayview.
- Others were fine with proposal
- Some concerns of Harris soon being too full
- Suggestion: Build a more safer Menziesshill HS

What do you want to Know?

- What if you don't have any brothers or sisters but live closer to another school, could you go to that school?
 - *Your parents are entitled to make a placing request to any primary in the city but this does not guarantee a place.*
- What is the maximum of children we are allowed in a class?
 - *The max number is p1- 25, p2 - 30 and p3 onwards 33.*
- Will we need new teachers or more teachers if the school gets bigger?
 - *Yes if the pupils numbers increase and a new class is created.*
- What if the Perth HS gets too full will they change it back?
 - *Perth High school roll has to allow for Invergowrie pupils as it is an associated primary, regardless of parents choosing to send their children.*

All attendees were made aware that their views would be collated into a consultation report to help inform final decisions regarding the proposals. Views out with the meeting could also be shared via email and written response as indicated within the consultation materials to Children and Families Service.



School Estate Proposals

FORMAL CONSULTATION ACTIVITY

**Engagement Sessions with Staff
Venue: Victoria Park Primary School**

9 March 2020

Officers: Angela Innes, Education Officer

Other Attendees: none

13 individuals attended the session, those represented were ~~staff/pupils/parents/carers~~
All conversations during the session took place in relation to Children and Families Service school estate proposals, of which formal consultation is being undertaken between 10th February and 27th March 2020.

Key observations/concerns raised:

- Staff welcomed the fact that the re-alignment of the school's catchment would lead to an increased role and place the school within its own catchment area. They liked that it would give the school a better opportunity to build an identity within its own community and appreciated the educational rationale for the re-alignment.
- Concern about whether there is enough physical space in the school to accommodate the projected increase in role. The school has 8 classrooms and all are currently being used by 8 classes. There are 6 flexible spaces across the West End campus, with 5 being used by St Joseph's and only 1 allocated to Victoria Park. Victoria Park would need more of that shared space but St Joseph's role is also expanding (currently 352 pupils for a capacity of 342). The concern about space also extends to whether the playground is large enough for all of the children. Staff questioned whether there was a likelihood that numbers would be capped.
- A question was raised about streets being divided between more than one school catchment and whether there would be an opportunity for parents to input their postcode into a new data base that would show the new catchment in which their residence would sit.
- It was pointed out that parents of nursery children at Roseangle are unhappy that their children may potentially no longer be attending Blackness PS.

All attendees were made aware that their views would be collated into a consultation report to help inform final decisions regarding the proposals. Views out with the meeting could also be shared via email and written response as indicated within the consultation materials to Children and Families Service.



School Estate Proposals

FORMAL CONSULTATION ACTIVITY

Engagement Sessions with Victoria Park Pupil Voice
Venue : Victoria Park Primary School

16th March 2020

Officers: Gordon Laidlaw , Project Officer

Other Attendees:

8 attended the session, those represented were ~~staff/pupils/parents/carers~~, These were representatives of pupils voice from P1-P7.

All conversations during the session took place in relation to Children and Families Service school estate proposals, of which formal consultation is being undertaken between 10th February and 27th March 2020.

Key observations/concerns raised:

What do you know

- Knew about it through letter going home in school bags.
- Talked about at assembly.

What do you think

- Good idea for schools to be in their catchment area.
- Blackness and Camperdown catchments look a little small compared to the others
- Good that this means our classes won't get any bigger, like smaller classes, not too small though.
- Very good for primaries, too many pupils means you run out of rooms.
- We like being part of our local school, meet people/new friends that we live close to and can play with.
- 20min drive to Perth seems a really long time to get to school, I also means you are another 20 minutes to get home again.

What would you like to happen

- Better to change that what we have at the moment, I like the ideas.
- Still don't think it's good for Invergowrie boys and girls.
- I think it's good because it means pupils that live in Dundee get to go to their own secondary school. Is it fair that someone from Perth gets a place?
- Maybe Invergowrie could go to another secondary school in Dundee that's closer than Perth.
- What about putting other primaries to different secondaries.

What would you like to know

- Does this mean children that live close to Victoria park can now go to their local Primary.

- *Yes, if the proposal is approved, more will live in the catchment and be a priority 1 to attend the school, some parent my still choose to send them elsewhere.*
- Does the bigger catchment for Ancrum take pupils away from Camperdown.
 - *Currently the majority of these families already send their children to Ancrum because they see it as their local school, so No, however what this should do is prevent Camperdown from getting too full and the school running out of space for all the Pupils.*

All attendees were made aware that their views would be collated into a consultation report to help inform final decisions regarding the proposals. Views out with the meeting could also be shared via email and written response as indicated within the consultation materials to Children and Families Service.



School Estate Proposals

FORMAL CONSULTATION ACTIVITY

Engagement Sessions with Associated Primaries Parent Council Chairs Venue Harris Academy

9 March 2020

Officers: Pam Nesbitt (Education Manager – West), Gordon Laidlaw (TRIC Project Officer) Angela Innes (Education Officer, Note taker)

Other Attendees:

5 individuals attended the session, those represented were **staff/pupils/parents/carers**. All conversations during the session took place in relation to Children and Families Service school estate proposals, of which formal consultation is being undertaken between 10th February and 27th March 2020.

Key observations/concerns raised:

- Overall, there was a positive response from the group.
- Representatives for Victoria Park and Ancrum Road were especially pleased that the re-alignments would put their schools in the heart of the community. All were in favour of the proposals putting more priority 1's in their catchments and that these being apportioned more fairly across the 5 schools.
- Victoria Park welcomed the projected reduction in the number of placing requests for their school and hoped that the changes would also reduce the number of families whose children were split across two schools (VP and St Joseph's) in the West End Campus.
- There was a concern raised from Tayview about the impact on parking of any changes to the school roll as there are already considerable pressures in the local area being so close to Ninewells Hospital.
- The impact on school staffing related to school roll changes was also raised but not viewed as a concern.
- There was a concern about whether these changes would be dependent on the other proposal for Invergowrie having its status removed as an associated primary for Harris or if these could be approved independently.

All attendees were made aware that their views would be collated into a consultation report to help inform final decisions regarding the proposals. Views out with the meeting could also be shared via email and written response as indicated within the consultation materials to Children and Families Service.



School Estate Proposals

FORMAL CONSULTATION ACTIVITY

Engagement Sessions with LCPPs

February 2020

Officers: G Laidlaw

All conversations during each LCPP session took place in relation to Children and Families Service school estate proposals, of which formal consultation is being undertaken between 10th February and 27th March 2020.

West End LCPP 6th February 2020 2pm Blackness Library

Other Attendees: Sandy Flight,

- Possible use of interactive maps to support understanding of impact of proposals on families.
 - *Noted and support would be requested from IT to enable this addition.*
- Clarity regarding siblings and what arrangements may be made to support their transition once/if proposals go ahead.
 - *Sibling priority would be maintained and relevant detail would be explored to support transition if proposals went ahead.*
- Request that the local authority attempt to consult as widely as possible.

Coldside LCPP 11th February 2020 6pm Hilltown Community Centre

Other Attendees:

- Would proposals have any negative impact upon other schools which will not have boundary changes.
 - *No, it should have no impact.*
- Would a similar approach be taken to the Coldside campus in integrating community facilities and making the facility much more than just a school.
 - *This is a favoured approach and would be replicated in a larger scale*

Maryfield LCPP 13th February 2020 6pm Blackness Library

Other Attendees:

- Catchment changes seem reasonable and better suit the families in these areas that will get to their local primaries.
- Work closely with communities and build a school that is big enough for now and the future. (Braeview/Craigie proposal)

Lochee LCPP 25th February 2020 6pm Menzieshill Community Centre

- Invergowrie cannot be put out of Harris, this is wrong.
- You should never have closed Menzieshill
- Why spend £60m in the East of Dundee and nothing in the west.
- Can the other primaries such as Tayview take the increase in pupils

- *Yes currently it is running at about 60% of its capacity.*
- Children and Families need to look at the wider picture and have an overall estate strategy

Strathmartine LCPP 26th February 2020 6pm Ardler Complex.

- Why did St Pauls get built in the west of the city as you are now using the St Saviour's site for a school. We have daily problems from these pupils, could it not have been built in the East.
 - *Points noted, there would have been good reason and consultation undertaken as to its location, a similar consultation and engagement process was undertaken similar to this one.*
- Doesn't that site flood, St Saviour's flooded regularly and it was sinking, can you really build on that site.
 - *Yes, extensive work would be undertaken to make sure the building on the site has an appropriate foundation and will not get flooded. I believe it was the basement that flooded at St Saviour's which was already below the water table. Modern construction methods will enable us to prevent such problems, much of this technology and knowledge was not available when St Saviour's was built many years ago.*

The remaining LCPP meetings were also attended and the school estate proposals shared.

North East LCPP 10th February 2020
The Ferry LCPP 13th February 2020
East End LCPP 13th February 2020

Thematic Summary of Submissions Received in relation to Invergowrie proposal From Dundee and Perth and Kinross Parents/Carers, Residents and Organisations

9 written submissions received in relation to Invergowrie were submitted by parents, carers, young people and residents from Dundee and 42 written submissions were received from parents, carers, young people and residents from Perth and Kinross with 4 additional submissions received from organisations as follows: Harris Parent Council, The Executive Director of Education and Childrens Services Perth and Kinross Council, Invergowrie Parent Council and the Western Gateway Community.

Themes - Emergent themes and issues from the submissions included:

- Concern over the cessation of the option to attend educational provision at Harris Academy
- Contradicts Tayside plan commitment to cross-boundary collaboration on service delivery.
- Perceived absence of 'real' community ties and detachment to Perth for Invergowrie families/pupils.
- Disassociation with the West Dundee Community and peer/personal relationships, clubs and out of school activities.
- Concerns in relation to increased travel distances, associated pupil safety issues and provision of bus services
- Perceived impact upon future attainment of Harris Academy resulting from the removal of Invergowrie Primary.
- Concerns over pupil transportation including – increased journey times/distance, costs, increased carbon footprint and responsibility for transport provision
- Concerns over the mental health and wellbeing of young people resulting from the prolonged travel implications associated with travelling to Perth school.
- Concern related to COVID -19 and travel in confined spaces for prolonged periods.
- Concern over transition for current P5 - P7 pupils to secondary.
- Concern over an extended school day.
- Concerns with child illness and distance parents would need to travel to collect/support them.
- Separation of friendships across two secondary schools, Invergowrie pupils attending– Harris Academy or Perth High School.
- Concerns over misalignment of the two Local Authority school holidays.
- Perceived health disbenefits resulting from children not being able to walk or cycle to school.
- Concern over insufficient school capacity (short and long term) at Harris Academy and the removal of Invergowrie not resolving the issue.
- Concern over impact and possible consequences for Perth and Kinross Council regarding current admission and transfer to secondary school policy
- Claim of inaccuracy of projected housing numbers.
- Concern over robustness, reliability and validity of pupil roll projections for Harris Academy
- Lack of alternative options to the removal of Invergowrie pupils other than their attendance at a Perth and Kinross Secondary School.
- Lack of alternative if an Invergowrie pupil does not wish to attend Perth High School.
- Request to improve and extend facilities at Harris Academy.
- Proposal of roof tax for new housing in Harris Catchment to fund a school extension.
- Proposal to delay and allow further time for implementation.
- Consideration of Bi-council secondary.
- Consideration of alternative secondary in Dundee.
- Consideration of catchment changes for other Dundee secondaries.
- Concern from Dundee parents/carers regarding priority and placing request status of Perth & Kinross pupils to Dundee schools.
- Opposition to educational benefits statements from Dundee City Council

Wider themes from these submissions to be addressed within the report are detailed below:

- Sibling priority and priority status
- Travel concerns including Environmental issues
- After school studies, extracurricular and out of school activities
- Relationships, Health and wellbeing
- Projections of population and roll for Harris Academy
- Collaboration, multiagency and cross authority working
- Identification with Dundee
- Consideration of other options
- Timescales
- Educational benefits

Thematic Summary of Submissions Received in relation to Harris catchment changes proposal From Dundee Parents/Carers, Residents and Organisations

6 written submission received in relation to the Harris catchment changes, these were submitted by parents, carers and residents from Dundee. 1 additional submission received from National Express - Xplore Dundee.

Themes - Emergent themes and issues from the submissions included:

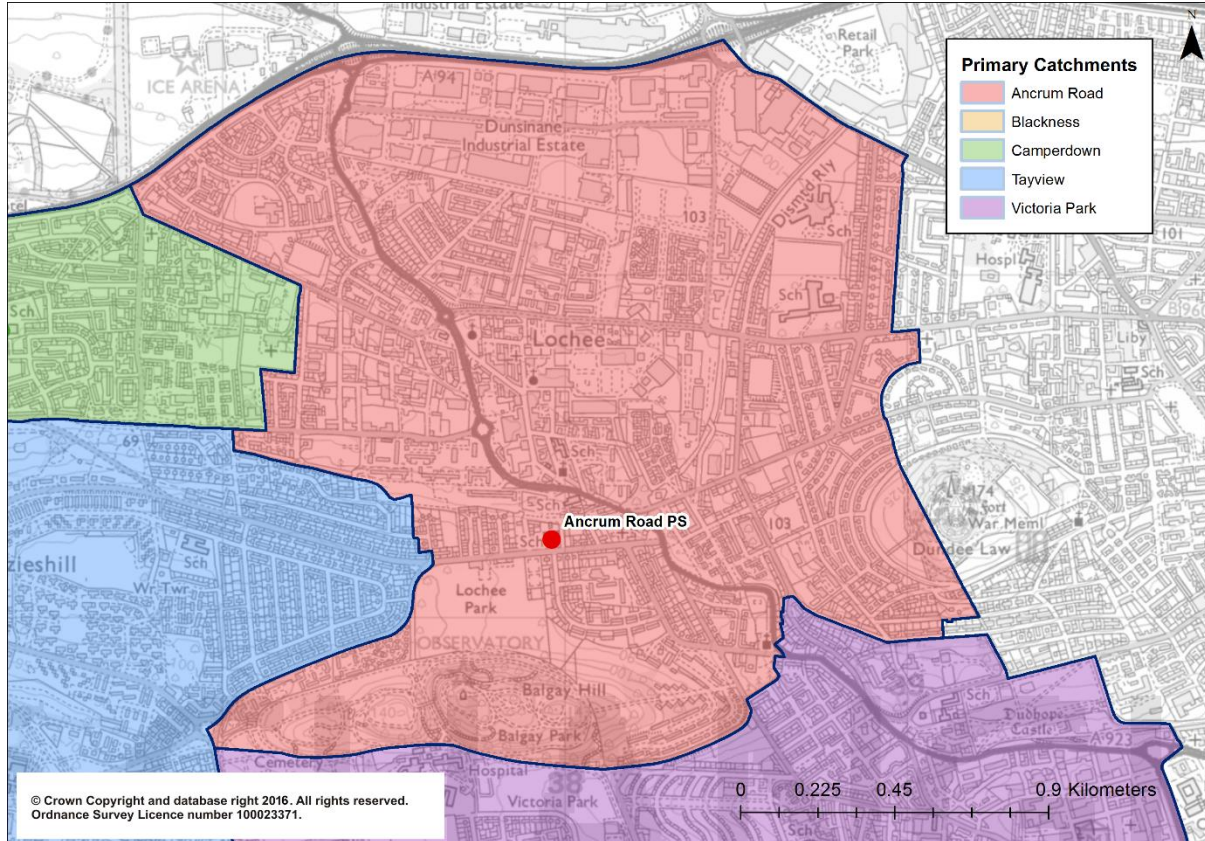
- Association with current primary school in relation to where they live
- Sibling priority status and continuity for families
- Reconsideration of boundary line changes.

Proposed changes to the catchment areas:

Descriptions of primary schools' proposed new catchment boundaries

Ancrum Road Primary School Catchment Boundary

Map 1: Proposed new catchment for Ancrum Road Primary School

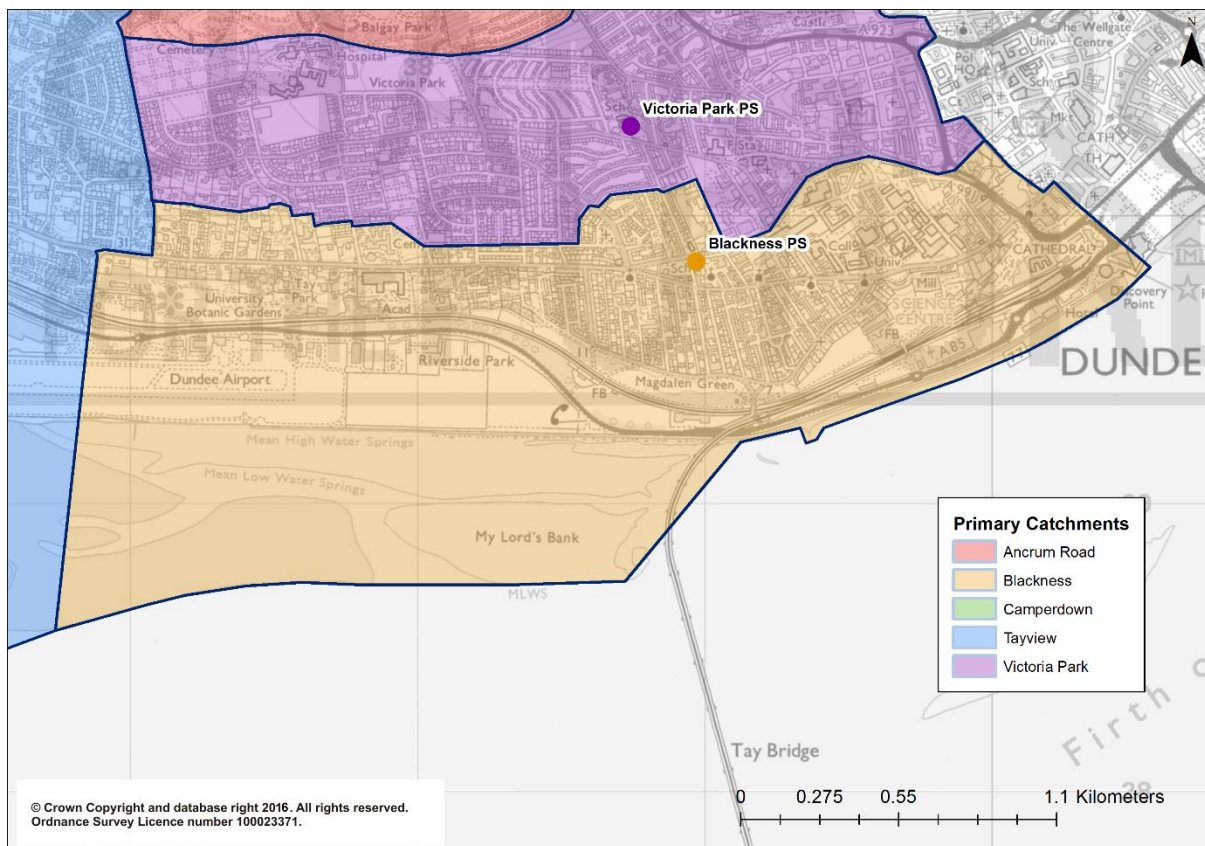


The boundary will run from the centre point of the A90/A923 junction east along the centre line of the A90 to the A90/B960 junction, southeast along the centre line of Clepington Road to 393 Clepington Road, south along the boundary line between 306 and 306A Clepington Road, south along the boundary line between 10/12 and 14/16 Glenmoy Avenue, south along the centre line of Glenmarkie Terrace to the junction with Strathmore Avenue, east along the centre line of Strathmore Avenue to the junction with Wetherby Place, south along the centre line of Wetherby Place, west and then south along the centre line of Byron Crescent, south along the centre line of Kinpurnie Place to the junction with Law Crescent, south-southeast across Dundee Law to Kinghorne Road at Inverlaw Steps, south east down Inverlaw Steps to Adelaide Terrace, west along the rear property boundaries of Albany Terrace to Kinghorne Terrace, south along the boundary line between 33/33A and 34 Albany Terrace, west along the centre line of Albany Terrace, continuing west along the centre line of Inverary Terrace to the junction with Rankine Street, west along the property boundary between 40 Rankine Street and 2 Gardiner Street, south along the rear property boundaries of 40 to 20 Rankine Street to Law Steps, southwest down Law Steps, south along the centre line of Lochee Road to the junction with Tullideph Road then south and west along the boundary line of St Francis Friary to City Road at the junction with Friary Gardens, then south along the centre line of City Road to the junction with Pentland Avenue, west along the centre line of Pentland Avenue, along the unnamed road leading west through Victoria Park to the bandstand at grid reference NO 376 306, west along the unnamed road leading to Balgay Cemetery to grid reference NO 371 306, then west to Glamis Road at the junction with Almond Place, north to the centre point of the adjacent roundabout, northeast along the centre line of Glamis Road to the junction with Ancrum Road, north along the centre line of Sutherland Street to 4 Sutherland Street, west along the southern property boundary of 4 Sutherland Street, north along

the rear property boundaries of 4 to 10 Sutherland Street to Sutherland Place, west along the centre line of Sutherland Place to 3 Sutherland Place, north along the property boundary line between 3 and 5 Sutherland Place, continuing north to grid reference NO 375 313, then west across open ground to Sharp's Lane, west along the northern boundary of 27 Sharp's Lane, west along the northern boundaries of 27 to 45 Sutherland Crescent, continuing west along the northern boundaries of 14 to 2 Ross Gardens, north along the centre line of Elmwood Road, east along the centre line of South Road to 313 South Road, north along the western boundary of 313 South Road, north along the western boundaries of 2 to 26 Wellburn Street, north along the western boundary of 39 Wellgrove Street, east along the northern boundaries of 39 to 17 Wellgrove Street, then north along the western boundaries of 59A to 1 Gray Street to Liff Road, northwest along the centre line of Liff Road to the junction with the A90 (Kingsway West) then northeast along the centreline of the A90 to the centre point of the A90/A923 junction.

Blackness Primary School Catchment Boundary

Map 2: Proposed new catchment for Blackness Primary School

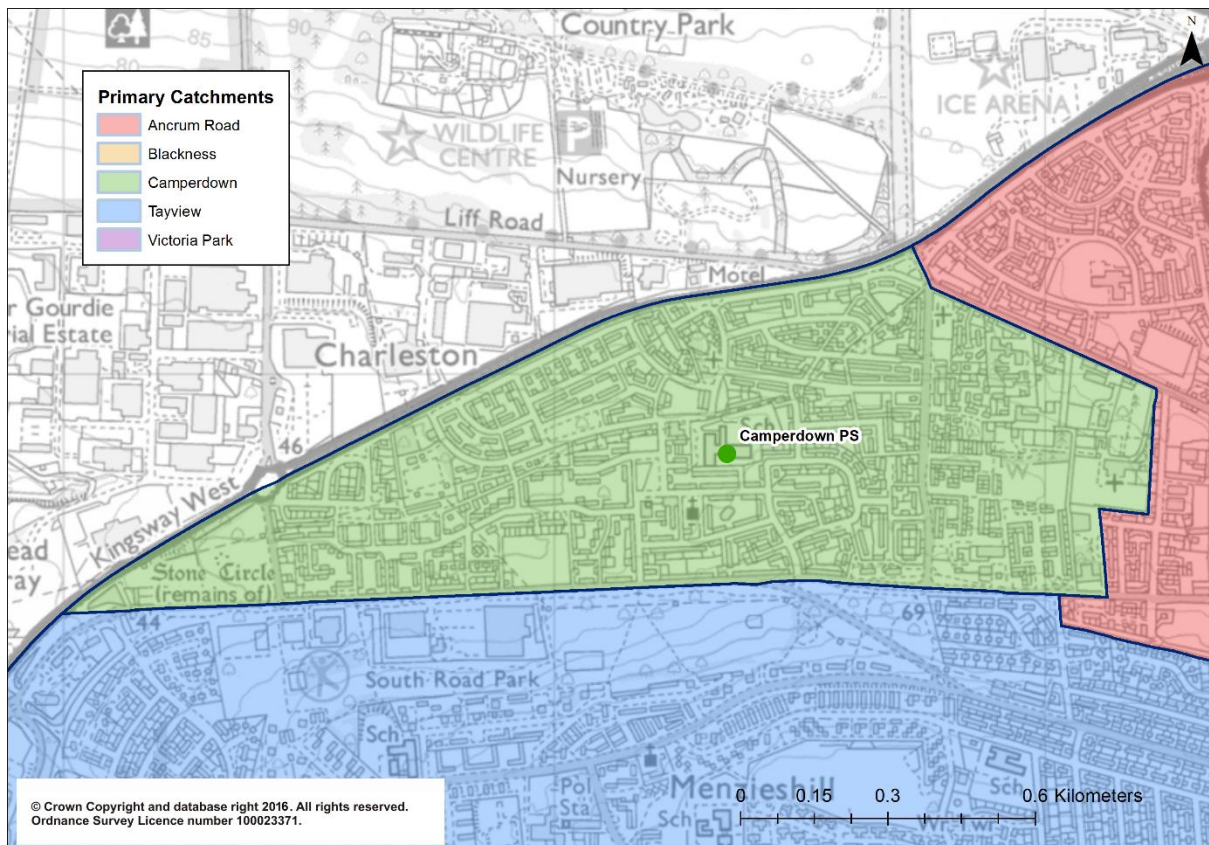


The boundary will run from the junction of North Lindsay Street and South Ward Road southeast along the centre line of North Lindsay Street to the junction with Willison Street then southeast through the Overgate shopping centre to 80 Nethergate, northeast along the centre line of the Nethergate to the junction with Union Street, southeast along the centre line of Union Street, then southeast to meet Dundee City Council's boundary at the coast adjacent to the V and A Museum, south and east along the Council boundary to grid reference NO 367 285, north across Dundee Airport to meet Riverside Drive at the bridge over the railway line at grid reference NO 368 296, north along the centre line of Riverside Drive to the junction with the Perth Road, east along the centre line of Perth Road to the junction with Glamis Road, north along the centre line of Glamis Road to 3 Galmis Road, east between 3 and 5 Glamis Road to Arnhall Gardens, east along the centre line of Arnhall Gardens, east along the boundary line between 9 and 23 Farington Street, along the northern boundary of 21 Farington Street, along the north boundary of 7 Farington Terrace for approximately 30 metres, east to the southern boundary of 8a West Grove Avenue, east along the southern boundary of 8a and 8 West Grove Avenue to West Grove Avenue, south along the centre line of West Grove Avenue for approximately 35 metres, east long the southern boundary of 1 (A, B and C) and

3A West Grove Avenue, south along the western boundary of 9 Beechwood Terrace, east long the centre line of Melville Terrace, south along the centre line of West Park Road to the junction with Rosewood Terrace, east along the centre line of Rosewood Terrace, south east across Western Cemetery to the junction of Grosvenor Road and Shaftesbury Road, east along the centre line of Shaftesbury Road to the junction with Seymour Avenue, north along the centre line of Seymour Avenue, across Blackness Avenue and east along the centre line of Corso Street, across Peddie Street and east along the centre line of Annfield Row, south along the centre line of Annfield Road, east along the centre line of the Hawkhill to the roundabout at the junction with West Marketgait, northeast along the centre line of Argyllgait and northeast along the centre line of South Ward Road to the junction with North Lindsay Street.

Camperdown Primary School Catchment Boundary

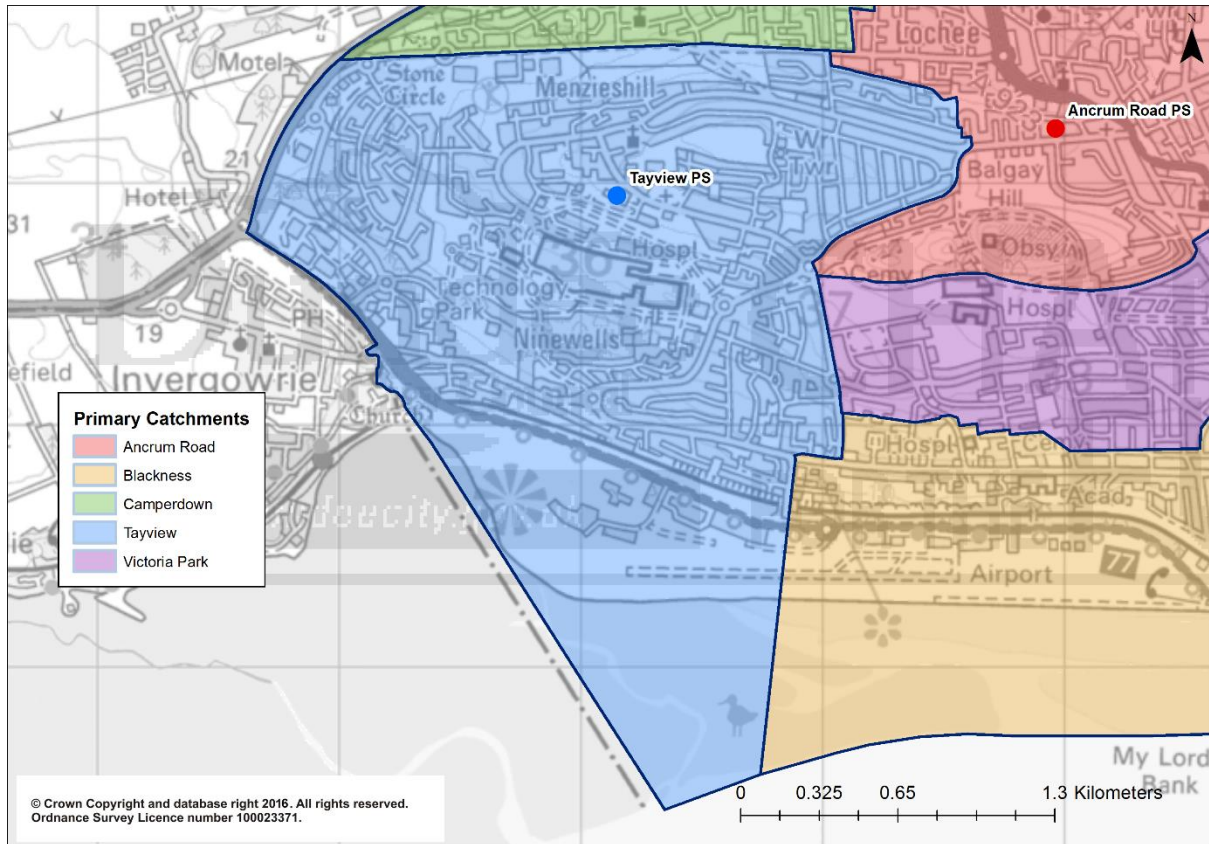
Map 3: Proposed new catchment for Camperdown Primary School



The boundary will run from the junction of Liff Road with the A90 (Kingsway West) southeast along the centre line of Liff Road to the private driveway 25m west of Gray Street, then south along the western boundaries of 1 to 59A Gray Street, then west along the northern boundaries of 17 to 39 Wellgrove Park, then south along the western boundary of 39 Wellgrove Street, then south along the western boundaries of 26 to 2 Wellburn Street to South Road, then west along the centre line of South Road to the centre of the roundabout at the junction with Mallaig Avenue, then west to the A90, northeast along the centre line of the A90 to the junction with Liff Road.

Tayview Primary School Catchment Boundary

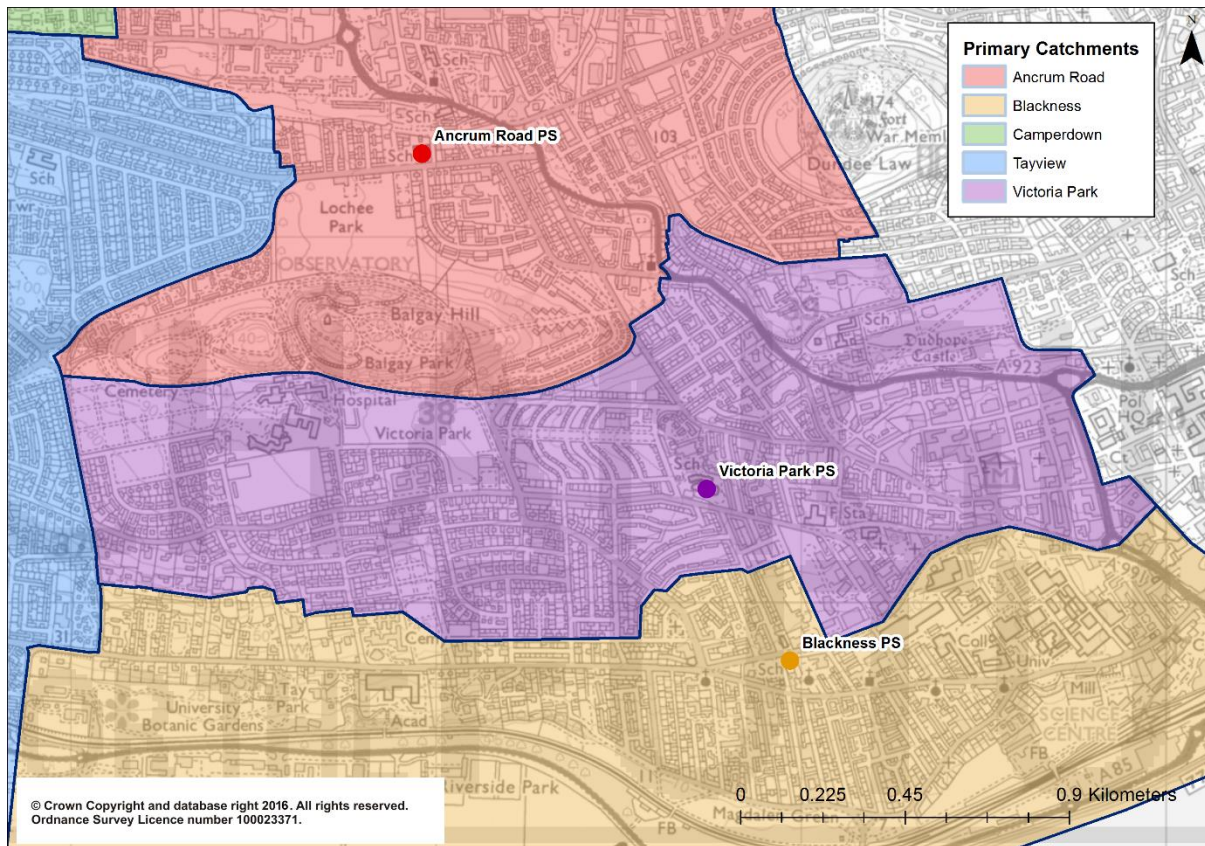
Map 4: Proposed new catchment for Tayview Primary School



The boundary will run from the A90 at grid reference NO 350 315, east to the roundabout at the junction of South Road and Mallaig Avenue, east along the centre line of South Road to the junction with Elmwood Road, south along the centre line of Elmwood Road to 48 Elmwood Road, east along the northern property boundaries of 2 to 14 Ross Gardens, east along the northern property boundaries of 45 to 27 Sutherland Crescent, east to the footbridge at the north end of Sharp's Lane, across open ground to grid reference NO 375 313, then south along the property boundary line between 3 and 5 Sutherland Place, east along the centre line of Sutherland Place to 1 Sutherland Place, south along the rear property boundaries of 10 to 4 Sutherland Street, east along the southern property boundary of 4 Sutherland Street, south along the centre line of Sutherland Street, across Ancrum Road and south along the centre line of Glamis Road to the junction with the Perth Road, west along the centre line of the Perth Road to the junction with Riverside Drive, south along the centre line of Riverside Drive to the bridge over the railway line at grid reference NO 368 296, then south across Dundee Airport to meet Dundee City Council's boundary at grid reference NO 367 285, west along the Council's boundary to the centre point of roundabout at the junction of the A90 and A85, north along the centre line of the A90 to grid reference NO 350 315.

Victoria Park Primary School Catchment Boundary

Map 5: Proposed new catchment for Victoria Park Primary School



The boundary will run from the junction of Lawside Road and Albany Terrace east along the centre line of Albany Terrace to the junction with Inverlaw Place, south along the centre line of Inverlaw Place, east along the centre line of Dudhope Terrace to the junction with Infirmary Brae, south along the centre line of Infirmary Brae then east along the centre line of Barrack Street to the head of the steps at the northern end of Parker Street, south along the centre line of Parker Street then south along the centre line of the West Marketgait to the junction with Ward Road, east along the centre line of Ward Road to the junction with North Lindsay Street, southeast along the centre line of North Lindsay Street to the junction with South Ward Road, southwest along the centre line of with South Ward Road to the junction with Argyllgait, southwest along the centre line of Argyllgait, across the roundabout at the junction with West Marketgait then west along the centre line of the Hawkhill to the junction with Annfield Road, north along the centre line of Annfield Road to the junction with Annfield Row, west along the centre line of Annfield Row, across Peddie Street and west along the centre line of Corso Street, across Blackness Avenue and south west along the centre line of Seymour Avenue, west along the centre line of Shaftesbury Road to the junction with Grosvenor Road, north west across Western Cemetery to Rosewood Terrace, west along the centre line of Rosewood Terrace, across West Park Road and west along the centre line of Melville Terrace, north along the western property boundary of 9 Beechwood Terrace for approximately 40 metres, west along the southern boundary of 3A and 1 (A, B and C) West Grove Avenue, north along the centre line of West Grove Avenue for approximately 35 metres, west along the southern boundary of 8a and 8 West Grove Avenue, then west along the north boundary of 7 Farington Terrace, west along the northern boundary of 21 and 9 Farington Street, west along the centre line of Arnhall Gardens, west along the northern property boundary of 6 Arnhall Gardens, west between 3 and 5 Glamis Road to Glamis Road, north along the centre line of Glamis Road to 62 Glamis Road, east across Balgay Cemetery to meet the unnamed track heading east to the bandstand at grid reference NO 376 306, then east along the unnamed road across Victoria Park to the park gates at Scott Street, east along Scott Street to the junction with Pentland Avenue, east along the centre line of Pentland Avenue, then north along the centre line of City Road to the junction with Friary Gardens, then east along the southern boundary of St Francis Friary, continuing to follow the Friary boundary to Tullideph Road, east along

the centreline of Tullideph Road to Lochee Road, then north along the centreline of Lochee Road to the bottom of Law Steps, northeast up Law Steps for approximately 30 metres, north along the western property boundaries of 20 to 40 Rankine Street, east across the northern property boundary of 40 Rankin Street, east along Inverary Terrace to the junction with Lawside Road.