



ITEM No ...4.....

DUNDEE CITY COUNCIL

Policy and Resources Committee – 21st March 2016

DUNDEE CITY LOCAL POLICING AREA PERFORMANCE RESULTS 1st April to 31st December 2015

**Report No 119-2016 by Chief Superintendent Eddie Smith
Police Scotland 'D' Division (Tayside)**

1. RECOMMENDATION

1.1 It is recommended that members note and scrutinise this operational report.

2. BACKGROUND

2.1 The purpose of this report (Appendix A) is to provide information to the Committee regarding the performance of Police Scotland against performance indicators that will facilitate local scrutiny.

2.2 Appendix A will provide context to the information provided in relation to performance and give information on some of the work which has taken place within the Dundee City Local Policing Area.

2.3 The data provided in this report is for information purposes to allow Committee Members to conduct their scrutiny responsibilities.

3. PERFORMANCE

3.3 Performance Indicators detailed in Appendix A are subdivided into the following priorities within this report which are the Local Policing Priorities as identified in the 3 year Local Policing Plan:

- Serious and Organised Crime
- Public Protection and Safety
- Road Safety
- Antisocial Behaviour
- Housebreaking and Theft
- Terrorism

4. FINANCIAL IMPLICATIONS

4.1. There are no financial implications as a result of this report.

5. STAFFING IMPLICATIONS

5.1 There are no staffing issues as a result of this report.

6. ENVIRONMENTAL ISSUES

6.1 This report does not have any impact on the environment.

7. SUMMARY

7.1 The attached report updates members regarding significant operational matters and gives context to the performance of the local policing area.

8. COMPLIANCE

Is the proposal;

- | | |
|--------------------------------------|-----|
| (a) Human Rights Act 1998 compliant? | YES |
| (b) Equality & Diversity compliant? | YES |



DUNDEE CITY COUNCIL

Policy and Resources Committee
(Police, Fire and Community Safety Committee)

Report by Chief Superintendent Eddie Smith
(Quarter ending 31 December 2015)



Contents

Background to this Report	page 3
Local Policing Priority Updates:	
Serious and Organised Crime	page 4
Public Protection and Safety	pages 5 - 8
Road Safety	pages 8 & 9
Antisocial Behaviour	pages 10 & 11
Housebreaking and Theft	pages 11 & 12
Terrorism	page 13
Multi Member Ward Breakdown	page 14

BACKGROUND TO THIS REPORT

As from April 2013, the Police and Fire Reform (Scotland) Act 2012 has required Police Scotland to produce and publish a Local Policing Plan (LPP) for each local authority area. The LPP clearly sets out the policing priorities for Dundee.

Performance in relation to the identified policing priorities is monitored and reviewed internally on a weekly basis. Quarterly reports are produced to allow scrutiny by Dundee City Council Policy and Resources Committee. This report covers the period from 1st October 2015 to 31st December 2015.

Data provided in this report is for information purposes to allow Board Members to conduct their scrutiny responsibilities.

This report will make reference to crime groupings. Groups 1-4 refer to an amalgamation of four crime groups. They are Group 1, consisting of violent crime; Group 2 covering sexual offences; Group 3 covers a wide range of crimes of dishonesty; and Group 4 includes vandalism, fire-raising and malicious mischief.

Serious and Organised Crime

Tackling Serious & Organised Crime Groups (SOCG's) remains a key focus in Dundee.

The number of detections for drugs supply, cultivation and production in Dundee LPA has seen a reduction of 3% compared to the same period last year.

The illegal supply of controlled drugs remains a national and international issue which is embedded in SOCG's.

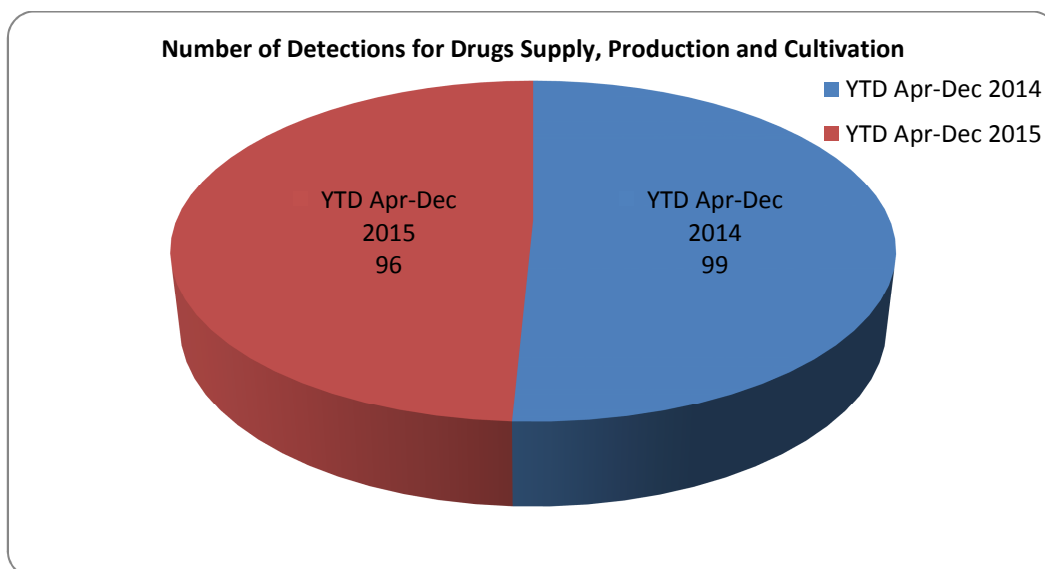
Within D Division (Tayside) Operation Slate has been adopted as a systematic approach to the identification and prosecution of those engaging in illicit drugs activity. We continue to work with our communities and partners to maximise local intelligence and then carry out pre-planned activity to disrupt and detect criminality.

A good example of this focussed activity is the recovery of over £10,000 worth of Cocaine seized during a pre-planned operation in November, and the recovery of £3,150 worth of Ecstasy tablets seized in December.

Pro-active work was carried out on a regular basis within this period, with local officers along with officers from the Divisional Violence Reduction Unit and the Operational Support unit engaging in foot patrols in identified areas.

Serious and Organised Crime

		5 year average	Apr-Dec 2014	Apr-Dec 2015	% Change from last year
25	Number of detections for drugs supply, production, cultivation.	132.2	99	96	-3.0%



Public Protection and Safety

Keeping People Safe is a key priority for the Police Service of Scotland.

Serious assaults have increased by 27.6% compared to the same period last year. This increase is in part due to the new Standards of recording. It should be noted that the detection rate has improved with 92.8% of serious assaults being detected.

Petty assaults have also seen an increase of 12.9% compared to the same period last year. However the detection rate has also improved with 82.6% of petty assaults being detected.

Changes have been made to the policing of the night time economy (Dundee Safe). This coupled with intelligence led deployments of the Divisional Violence Reduction Unit appears to have slowed the increase and enabled the high detection rate.

There has been a marked decrease in the number of robberies recorded in this period compared to the same period last year with 16 fewer robberies recorded. The detection rate has also improved with 94.6% of robberies detected between April and December 2015.

Part of the innovative approach to dealing with violent crime is through the Tayside Intensive Support Services (TISS), who work closely with perpetrators to rehabilitate their offending patterns; this is in collaboration with partners in Health, Social Work, Criminal Justice and Employment Services, amongst others.

This work in conjunction with the patrols carried out by Dundee LPA officers, to deter and detect violent crime, has been effective in reducing robberies by 16, compared to the same period last year, and with an increased detection rate of 94.6%.

Hate crime remains a priority for Dundee LPA, with each recorded incident subject to review by a supervisor.

Police Scotland at its inception identified sexual crime as a priority, and created the Divisional Rape Investigation Team (DRIT). The officers working in that unit are dedicated solely to the investigation of sexual crime, and to providing support to the victims, in collaboration with partners including Health and Social Work.

Because of this focus there has been a reduction in the number of group 2, crimes of indecency by 21.2% compared to the same period last year. The Group 2 detection rate has also seen an increase to 78%. The rape detection rate has increased by 18.3% compared to the same period last year to 91%.

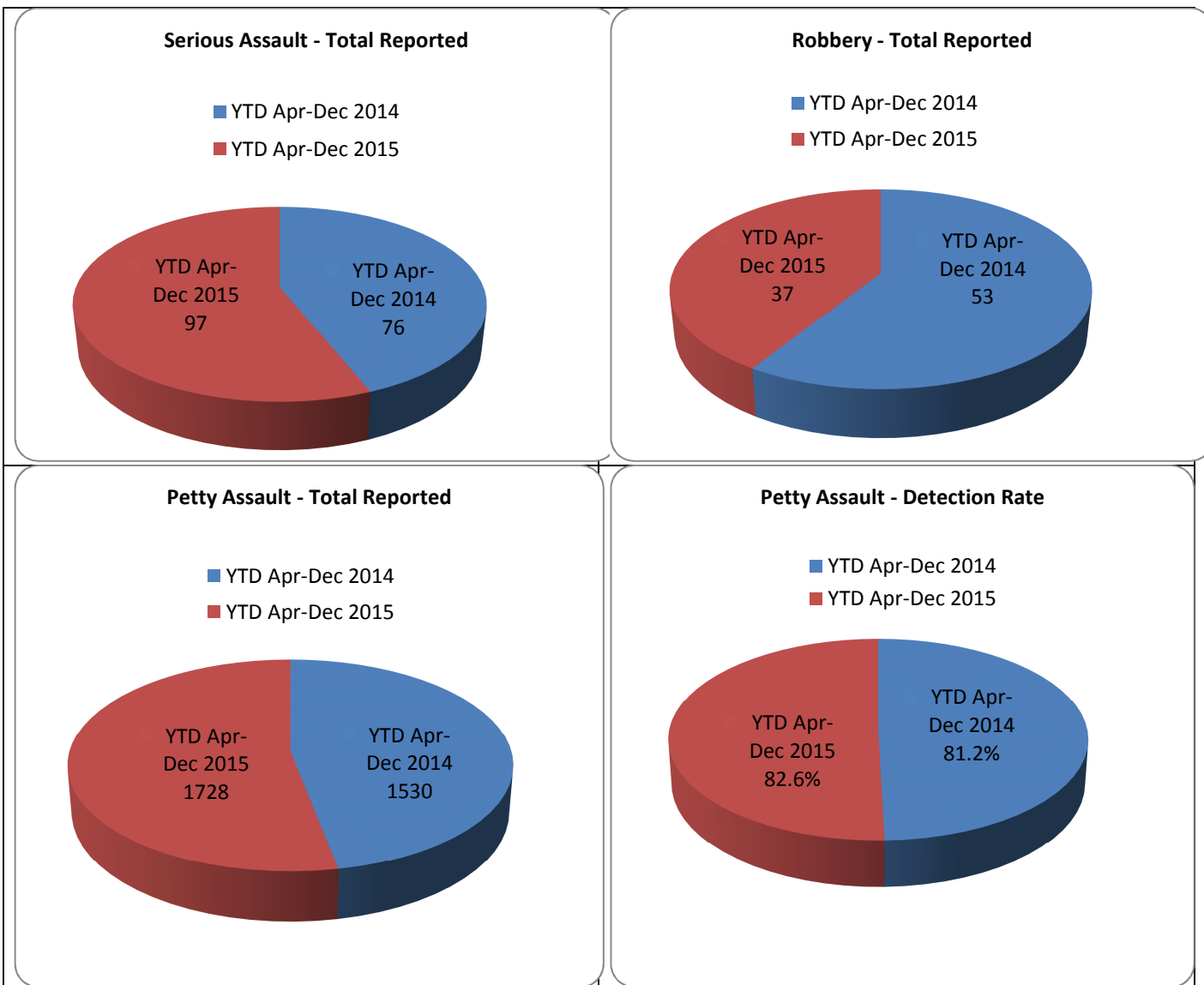
NOT PROTECTIVELY MARKED

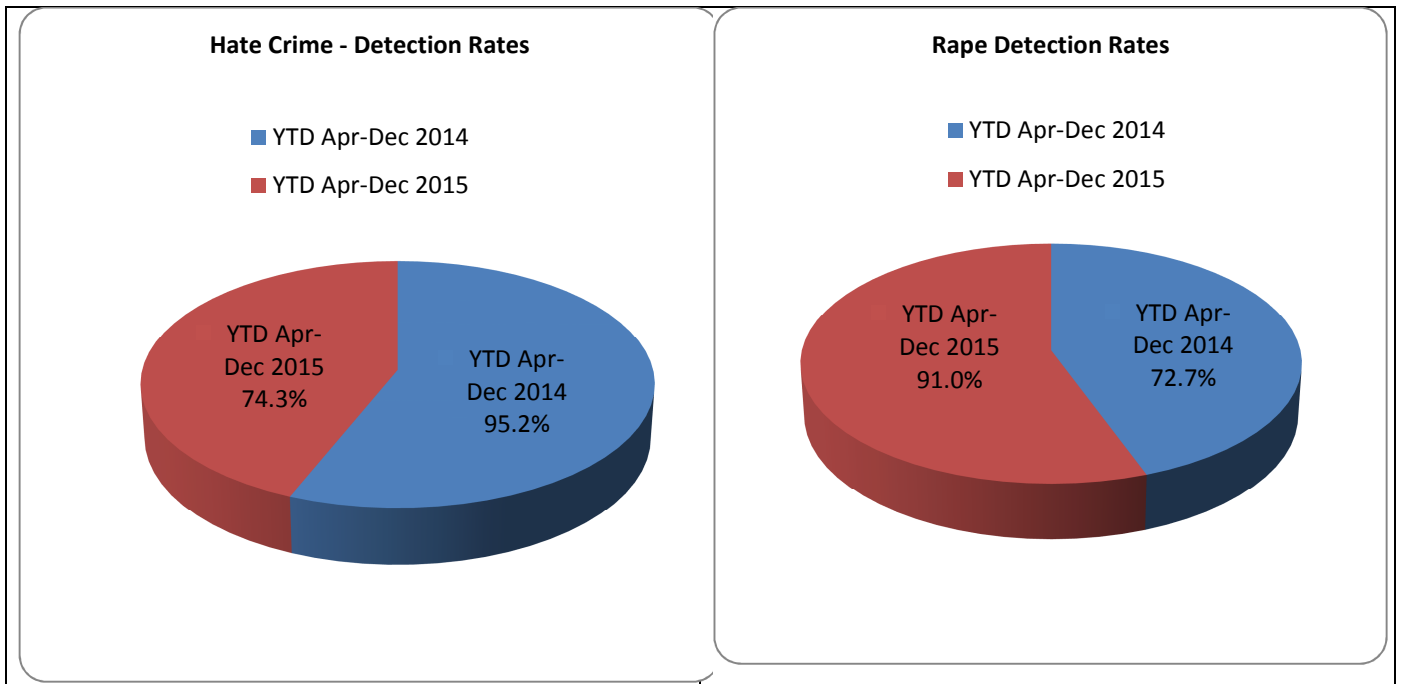
Public Protection and Safety					
		5 year average	Apr-Dec 2014	Apr-Dec 2015	% change from last year
1	Total Number Group 1: Crimes of Violence	178.2	171	172	0.6%
2	Murder	1.6	0	1	-
3	Attempted Murder	13.4	2	2	0.0%
4	Culpable Homicide (common law)	-	0	1	-
5	Culpable Homicide (other)	-	0	0	-
6	Serious Assault detection rate	85.6%	92.1%	92.8%	0.7
7	Serious Assault	77.8	76	97	27.6%
8	Robbery detection rate	72.4%	94.3%	94.6%	0.3%
9	Robbery	50.4	53	37	-30.2%
10	Petty (Common) Assault detection rate	72.1%	81.2%	82.6%	1.4%
11	Petty (common) Assault	1697.4	1530	1728	12.9%
13	Number of Domestic Abuse incidents reported to the Police	-	1858	1770	-4.7%
14	Total crimes and offences in Domestic Abuse incidents	-	1172	1226	4.6%
15	Percentage of Domestic incidents that result in a crime being recorded	-	53.0%	53.1%	0.1%
16	Total crimes and offences in Domestic Abuse incidents detection rate	-	82.5%	83.0%	0.5%
17	Total detections for Domestic Bail offences	-	110	62	-43.6%
18	95% of initial Domestic Abuse Bail Checks are conducted within 24hrs	-	-	97.1%	-
19	Hate crime and offences detection rate	-	95.2%	74.3%	-20.9%
-	Racially aggravated harassment (recorded)	1.8	2	-	-100.0%
-	Racially aggravated harassment detection rate	75.0%	100.0%	-	-
-	Racially aggravated conduct (recorded)	58.2	70	58	-17.1%
-	Racially aggravated conduct detection rates	89.1%	87.1%	91.4%	4.2%
33	Number of Group 2: Crimes of Indecency	221.2	397	313	-21.2%
34	Group 2 crimes detection rate	68.1%	74.3%	78.0%	3.7%
35	Rape detection rate	62.3%	72.7%	91.0%	18.3%

NOT PROTECTIVELY MARKED

			June-Nov 2015	June-Nov 2015 (Positive)
20	Number of Stop and Searches conducted (total)	-	922	241
21	Number of Statutory Stop and Searches conducted		819	233
22	Number of Consensual Stop and Searches conducted		103	8
23	Number of Consensual Stop and Searches refused		1	-
24	Number of seizures made		66	-

An enhanced version of the National Stop and Search Database commenced on 1 June 2015. The enhanced database brought significant changes in the process of data capture and the methodology for recording data items. No previous year to date figures are provided as it has been recognised this data is not 100% accurate, therefore comparisons will provide misleading results or invalid conclusions. Management information and data in respect of stop and search can be found on the Police Scotland website via <http://www.scotland.police/about-us/police-scotland/stop-and-search-data-publication>





Road Safety

The strategic priority for road safety is keeping people safe on the roads of Dundee.

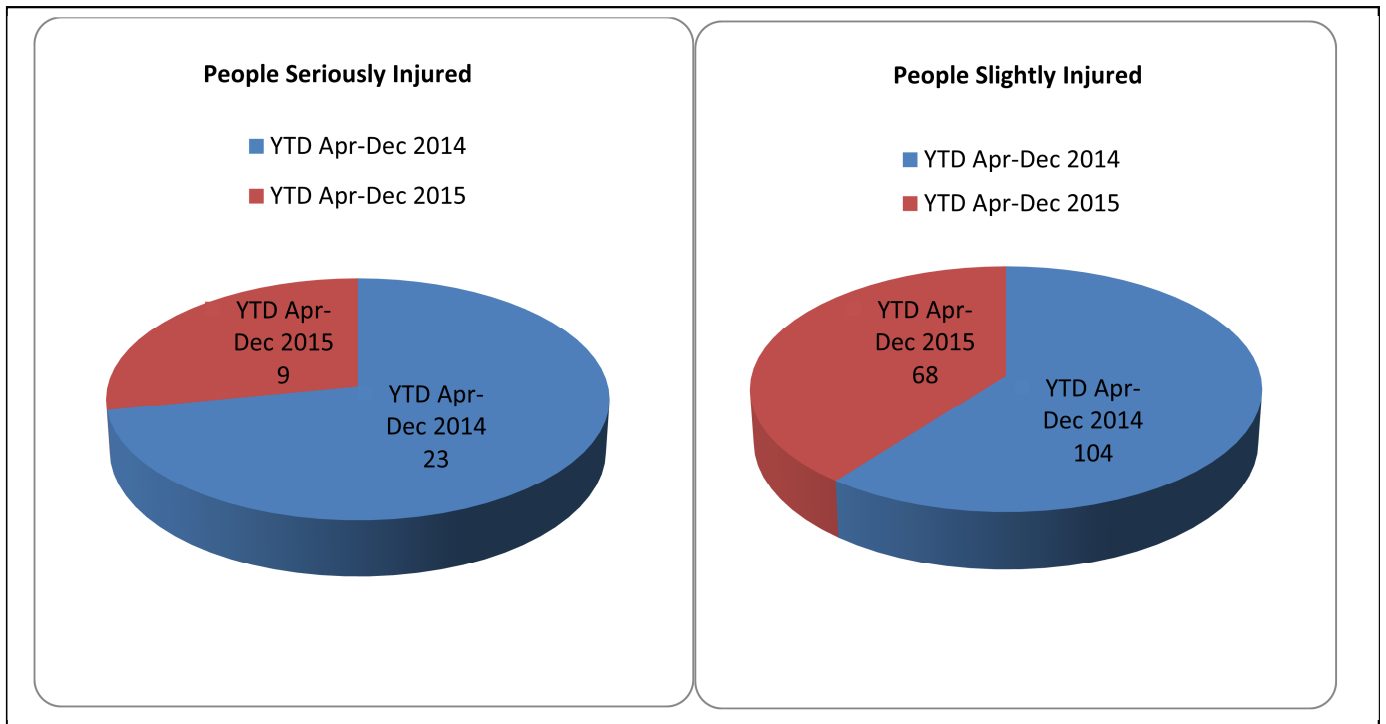
There has been a reduction of 60.9% in the number of seriously injured road casualties compared to the same period last year. This equates to 14 fewer people seriously injured on the roads across Dundee LPA. In addition those slightly injured on the roads in Dundee LPA has also seen a reduction of 34.6%, equating to 36 fewer casualties.

The number of children slightly injured on the roads during this period has seen a welcomed reduction of 33.3%.

Dundee LPA officers continue to work with our colleagues in DRPU and TRPG to target those who commit road traffic offences. A cohesive and pro-active approach has resulted in a marked increase in the number of disqualified drivers, speeding offences, dangerous drivers, insurance and driving licence offences being recorded.

The festive drink drive campaign period fell within this report period. There were 163 detections compared to 119 in the previous year to date for Drink/Drug driving offences. An increase of 37.0%.

Road Traffic Statistics					
		5 year average	Apr-Dec 2014	Apr-Dec 2015	% Change from last year
N/A	People Killed	-	1	1	0.0%
N/A	People Seriously Injured	-	23	9	-60.9%
N/A	People Slightly Injured	-	104	68	-34.6%
N/A	Children (aged <16) Killed	-	0	0	-
N/A	Children (aged <16) Seriously Injured	-	3	2	-33.3%
32	Dangerous driving	28.2	21	73	247.6%
33	Speeding	656.6	627	784	25.0%
34	Disqualified driving	33.0	21	70	233.3%
35	Driving Licence	171.2	157	335	113.4%
36	Insurance	374.8	315	580	84.1%
37	Seat Belts	184.4	141	132	-6.4%
38	Mobile Phone	213.8	245	135	-44.9%



Antisocial Behaviour

A reduction in the number of complaints received regarding disorder from 8276 to 7586 can be at least in part attributed to focussed activity by Dundee LPA officers supported by Divisional Violence Reduction Unit (DVRU) officers, Operational Support Unit (OSU) officers and Campaign Against Violence (CAV) deployments.

Vandalisms and malicious mischief has seen an increase of 12.5% compared to the same period last year, however the detection rate has increased by 4.3% to 25%. We continue to work with our partners, including Community Wardens to prevent and detect these offences.

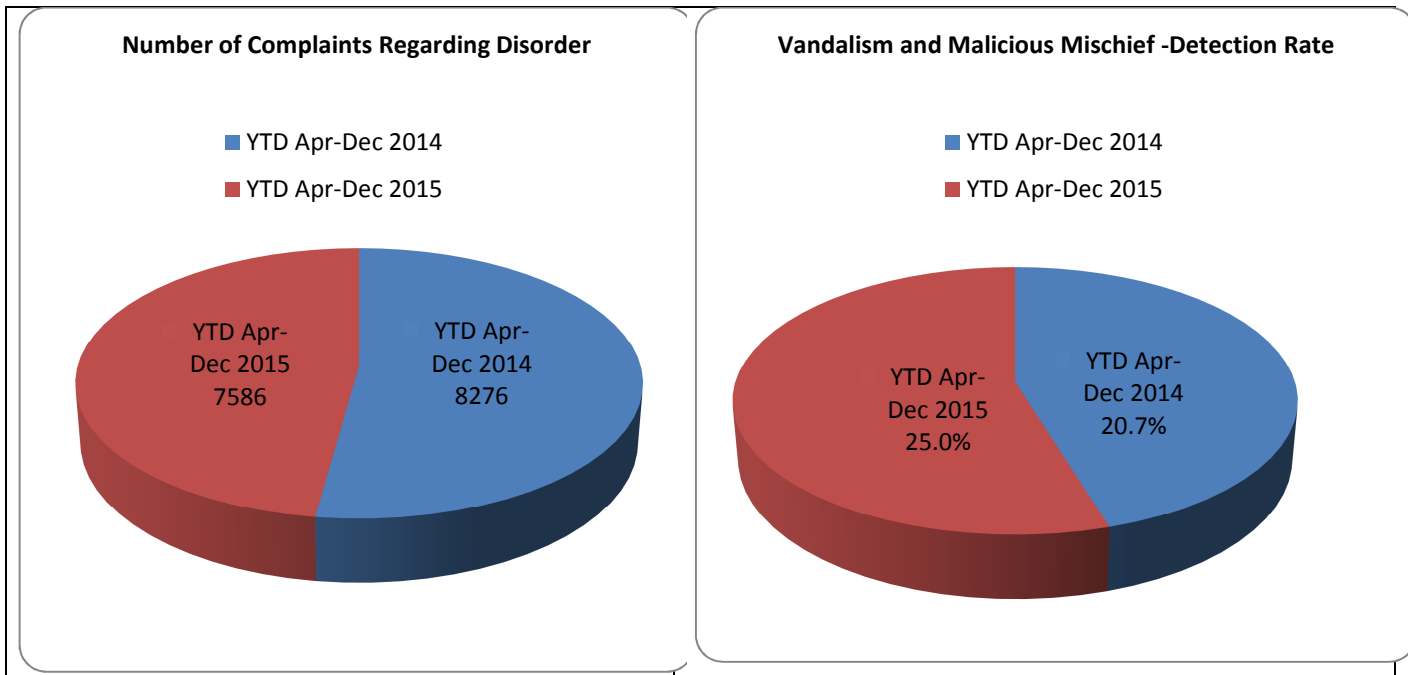
With the establishment of the Community Safety Hub at Lochee Housing Office, daily Multi-Agency Tasking and Co-ordination meetings take place to identify areas of concern and vulnerable individuals, to ensure that the most appropriate resource is deployed to support early and effective interventions.

A new Inspector is being appointed to oversee a consistent approach to all of the community hubs within D division and ensuring that local concerns and priorities are identified and progressed.

The number of detections for consuming alcohol in a designated place has reduced by 55.3% which equates to 52 fewer detections.

Antisocial Behaviour

	5 year average	Apr-Dec 2014	Apr-Dec 2015	% Change from last year
Number of complaints regarding disorder	-	8276	7586	-8.3%
Vandalism & Malicious Mischief detection rate	26.2%	20.7%	25.0%	4.3%
Vandalism & Malicious Mischief	1546.0	1197	1347	12.5%
Number of detections for Consuming Alcohol in a designated place (where appropriate byelaws exist)	-	94	42	-55.3%



Housebreaking and Theft

The number of theft by housebreakings (including attempts) has increased during this period but remains considerably lower than the 5 year average. The detection rate has improved with an increase of 3.6%.

During the festive period we worked closely with our partners in risk management and retail premises within the Dundee LPA to target those involved in theft. There were 58 more theft by shopliftings occurred during this period compared to the same period last year and we will continue to work with our partners to target those willing to commit these thefts.

Numerous safety and security messages were issued throughout the autumn and festive period, advising householders to maximise home security, look after their property and assist their neighbours.

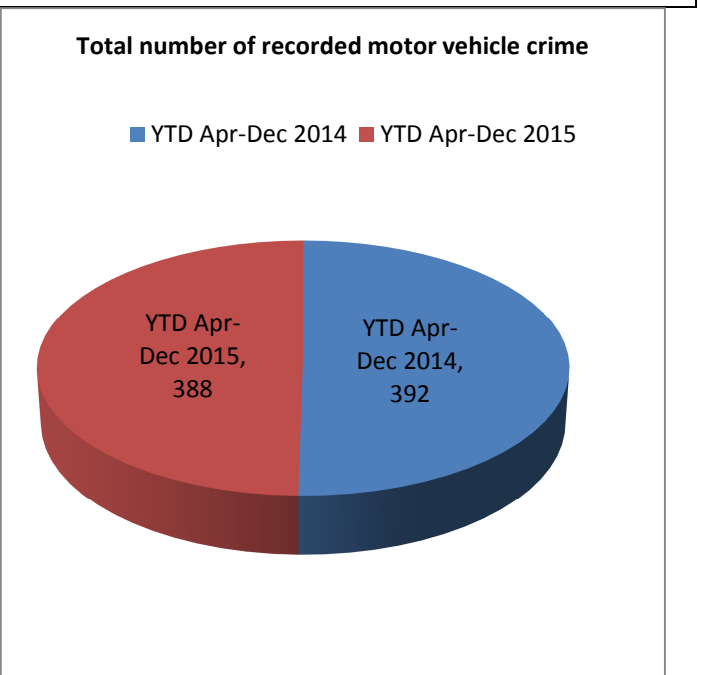
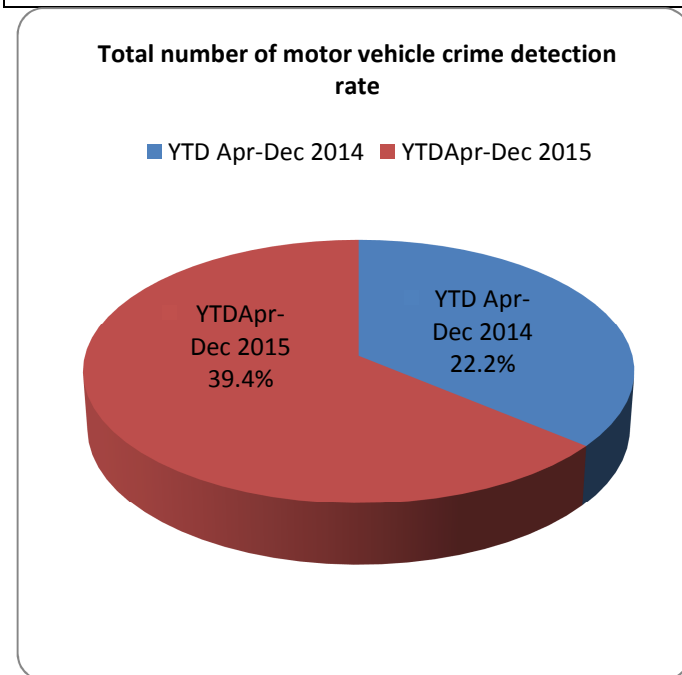
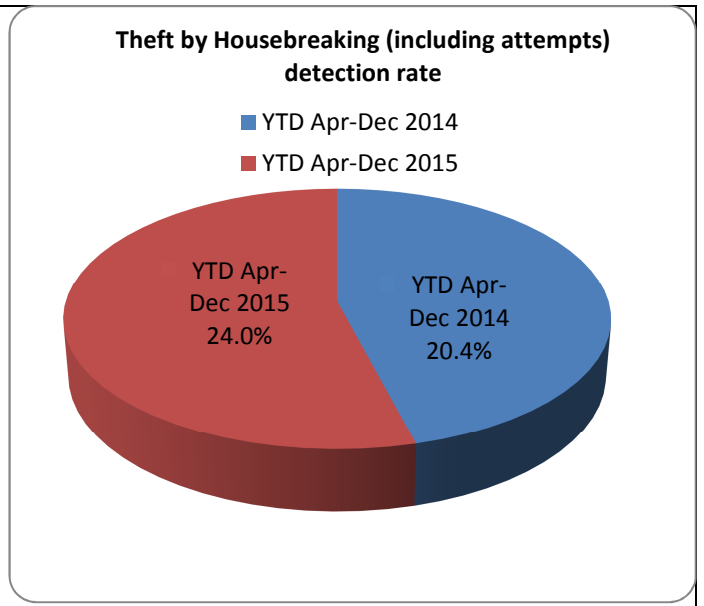
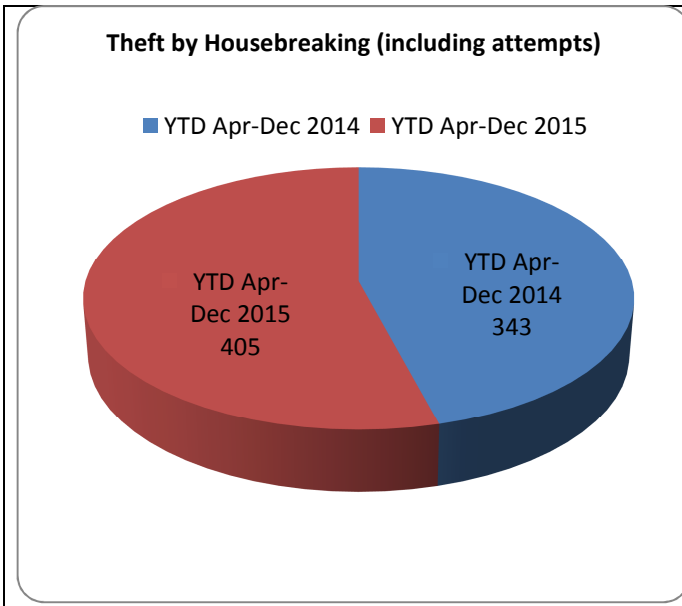
These messages were circulated by traditional press, social media and the internet.

Community Safety Wardens and dedicated officers engaged in high visibility patrols and a focus remained on acquisitive crime, resulting in an increase in the detection rate.

Examples of this are 1 individual arrested and charged for breaking in to 3 commercial premises, a further 3 individuals reported for targeting other commercial premises in the city and 4 individuals arrested and reported for breaking in to private dwellings.

A further 8 individuals were arrested and charged with attempted break-ins to property during this period.

Housebreaking and Theft by Shoplifting				
	5 year average	Apr-Dec 2014	Apr-Dec 2015	% Change from last year
Theft by housebreaking (including attempts) detection rate	24.7%	20.4%	24.0%	3.6%
Theft by housebreaking (including attempts)	526.8	343	405	18.1%
Theft by shoplifting detection rate	83.5%	78.9%	75.0%	-3.9%
Theft by shoplifting	1168.0	1042	1090	4.6%
Total number of motor vehicle crime detection rate	25.7%	22.2%	39.4%	17.2%
Total number of recorded motor vehicle crime	495.8	392	388	-1.0%



Terrorism

The threat level for international terrorism to the UK remains at SEVERE.

Unfortunately global tensions aligned with political and religious conflict remain a clear threat, throughout the world and the UK.

In line with the Governments CONTEST Strategy, we remain focussed on the four strands, Prevent, Prepare, Protect and Pursue.

We continue to work with partners to remain vigilant and challenge extremist rhetoric.

Regular multi-agency training and awareness sessions take place and we rely on local communities to raise any concerns they may have.

NOT PROTECTIVELY MARKED

	Coldside			East End			Lochee			Maryfield		
	Rec	Det	%	Rec	Det	%	Rec	Det	%	Rec	Det	%
Groups 1-5	867	378	43.6%	712	382	53.7%	932	501	53.8%	1898	1174	61.9%
Groups 1-4	690	218	31.6%	559	246	44%	763	346	45.3%	1443	760	52.7%
All Group 1	20	17	85%	17	18	105.9%	22	23	104.5%	59	53	89.8%
Murder/ Attempt Murder	-	-	-	1	1	100%	1	1	100%	1	1	100%
Serious Assault	8	7	87.5%	5	5	100%	11	12	109.1%	38	33	86.8%
Robbery	9	9	100%	4	4	100%	5	5	100%	11	11	100%
Common Assault	261	225	86.2%	194	160	82.5%	220	181	82.3%	495	403	81.4%
Knives/ Offensive Weapons	14	14	100%	3	3	100%	8	7	87.5%	18	18	100%
Drugs Supply/ Production	19	15	78.9%	14	12	85.7%	29	24	82.8%	21	17	81%
All Group 2	30	23	76.7%	41	48	117.1%	54	38	70.4%	61	43	70.5%
Housebreaking	74	24	32.4%	21	4	19%	66	6	9.1%	61	17	27.9%
Shoplifting	37	18	48.6%	103	79	76.7%	206	148	71.8%	523	428	81.8%
	North East			Strathmartine			The Ferry			West End		
	Rec	Det	%	Rec	Det	%	Rec	Det	%	Rec	Det	%
Groups 1-5	527	184	34.9%	735	352	47.9%	272	100	36.8%	599	263	43.9%
Groups 1-4	459	116	25.3%	616	239	38.8%	241	68	28.2%	510	188	36.9%
All Group 1	12	12	100%	14	13	92.9%	3	3	100%	24	20	83.3%
Murder/ Attempt Murder	-	-	-	-	-	-	-	-	-	-	-	-
Serious Assault	8	8	100%	10	10	100%	3	3	100%	14	12	85.7%
Robbery	-	-	-	3	1	33.3%	-	-	-	4	4	100%
Common Assault	131	110	84%	158	134	84.8%	67	55	82.1%	177	139	78.5%
Knives/ Offensive Weapons	8	7	87.5%	12	11	91.7%	1	1	100%	2	2	100%
Drugs Supply/ Production	2	4	200%	12	11	91.7%	-	-	-	10	10	100%
All Group 2	34	23	67.6%	31	29	93.5%	13	7	53.8%	38	27	71.1%
Housebreaking	56	9	16.1%	43	20	46.5%	24	6	25%	48	9	18.8%
Shoplifting	1	1	100%	86	65	75.6%	55	21	38.2%	61	44	72.1%

Contact Details

Divisional Commander - Chief Superintendent Eddie Smith
D Division HQ
West Bell Street
Dundee

Area Commander – Chief Inspector Gary Ogilvie
Dundee LPA
Lochee Police Office
Dundee