

**REPORT TO:** POLICY AND RESOURCES COMMITTEE – 20 DECEMBER 2004

**REPORT ON:** COMMUNITY REGENERATION FUND ALLOCATION OF RESOURCES 2005/2006

**REPORT BY:** ASSISTANT CHIEF EXECUTIVE (COMMUNITY PLANNING)

**REPORT NO:** 743-2004

**1. PURPOSE OF REPORT**

- 1.1 This report outlines the funding arrangements for the Community Regeneration Fund allocated through Communities Scotland and makes recommendations for allocation for the financial years 2005/6, 2006/7 and 2007/8.

**2. RECOMMENDATIONS**

It is recommended that the Committee:

- 2.1 Notes the funding allocation made by Communities Scotland to the Dundee Partnership for the purposes of managing the Community Regeneration Fund;
- 2.2 Agrees the reporting relationship to Dundee City Council as the accountable body on behalf of the Dundee Partnership;
- 2.3 That partners be consulted on proposed distribution of funding to Local Community Regeneration Forums; and
- 2.4 Endorses the funding proposals contained in Section 10 of this report.

**3. FINANCIAL IMPLICATIONS**

- 3.1 The funding available to the Dundee Partnership is £5.775 million for 2005/6 and this report recommends allocation of £3,294,742 in that year. Further allocations are proposed subject to the confirmation of required funding from Communities Scotland.
- 3.2 Local Community Regeneration Forums will be responsible for the allocation of the remaining £2,480,258 in 2005/6.
- 3.3 There are no direct additional financial implications for Dundee City Council arising from this report.

**4. LOCAL AGENDA 21 IMPLICATIONS**

There is a close relationship between Local Agenda 21 targets and the focus of the Community Regeneration Programme. The revenue expenditure proposals contained within this report are intended to meet local needs. The proposals also seek to assist with implementation of the Dundee Partnership's Community Regeneration Strategy, as such the measures contained in this report will impact on numerous agenda 21 targets.

**5. EQUAL OPPORTUNITIES IMPLICATIONS**

The resources made available through the Community Regeneration Fund for geographic neighbourhoods are targeted on those areas which fall within the most

disadvantaged 15% of datazone in the 2004 Scottish Index for Multiple Deprivation. The funding made available is intended to have the affect of equalling opportunities.

## 6. BACKGROUND

- 6.1 On 12 July 2004 the Scottish Executive announced the establishment of a new £104 million Community Regeneration Fund (CRF) to bring improvements to Scotland's most deprived areas and help individuals and families escape poverty. The CRF replaces the existing Social Inclusion Partnership (SIP) and Better Neighbourhood Services Fund (BNSF) programmes and builds on the lessons and good practice from these programmes. In announcing the CRF the Minister also outlined six Closing the Opportunity Gap (CtOG) objectives for driving forward the Executive's commitment to tackling poverty and exclusion. The principal purpose of the CRF is to achieve the objective of regenerating the most disadvantaged neighbourhoods, so that people living there can take advantage of job opportunities and improve their quality of life
- 6.2 Community Regeneration Funding is expected to be targeted at the most deprived 15% of areas of Dundee as identified by the Scottish Index of Multiple Deprivation 2004. There are 51 such areas in Dundee with a population of approx. 40,000 based predominantly on the existing SIP1 and 2 communities. These areas have been collected into five clusters across the city which are defined as Community Regeneration Areas.
- 6.3 On 9 December 2004, the Communities Minister, Malcolm Chisholm, announced an allocation to Dundee from the Community Regeneration Fund as follows:

2005/06	£5,775,000
2006/07	£5,665,000
2007/08	£5,927,000

The impact of the funding announced on the programme agreed in Dundee in years 2 & 3 is being assessed.

## 7. MANAGING THE COMMUNITY REGENERATION FUND

- 7.1 In its guidance on Regeneration Outcome Agreements, the Scottish Executive makes clear that Community Planning Partnerships must have a transparent and inclusive means of agreeing community regeneration priorities, allocating funding and monitoring and evaluation. The proposed decision making mechanism for the Dundee Partnership will achieve the balance of strategic and local decision making while strengthening both.

### 7.2 Accountable Body

- 7.2.1 As with the Better Neighbourhood Services Fund and SIP currently, it is recommended that Dundee City Council will act as accountable body reporting to its Policy and Resources Committee as required.

### 7.3 Decision Making

- 7.3.1 National Guidance states that the Dundee Partnership must "ensure that local regeneration takes place within the wider strategic context of community planning so that the core services and core budgets of public bodies are working together to close the opportunity gap for disadvantaged communities".
- 7.3.2 In Dundee the organisations with the key responsibilities and resources for regeneration such as health, community safety and economic development, are represented on the

Dundee Partnership Management Group which agrees the overall strategy, priorities and action plans for the city. It also makes the connections between public sector service providers and others and offers the greatest opportunity to secure mainstream spend in support of community regeneration activity and outcomes. This group is best placed to ensure that national policies are delivered locally through the Regeneration Outcome Agreement which it will approve before submission to the Scottish Executive in December 2004.

The overall responsibility for decisions on the Community Regeneration Fund and the associated Outcome Agreement will therefore be taken formally by the Dundee Partnership Management Group.

### 7.3.3 Strategic Allocation

The Building Stronger Communities Theme Group of the Dundee Partnership has a remit which includes:

- Community Regeneration Strategy
- Strategic Physical Development
- Better Neighbourhood Services
- Developing Neighbourhood Environments
- Empowerment and Community Involvement

As a result the Building Stronger Communities theme group will co-ordinate the Community Regeneration Fund on behalf of the Dundee Partnership. To enable the group to undertake this role effectively community representatives will be added to the group from each community regeneration cluster.

### 7.3.4 Local Community Regeneration Forums

7.3.4.1 The production of local community plans has been a significant milestone for the Dundee Partnership and one that resonates with the Scottish Executive's Community Regeneration statement which confirms that "it is at the local or neighbourhood level that regeneration activity makes its impact, and community planning at this level will play a crucial role in responding in a joined-up way to local needs and priorities, rationalising partnership activities and engaging with communities".

7.3.4.2 The local community planning process, local SIP Groups, neighbourhood representative organisations together with the creation of Neighbourhood Partnership Networks have resulted in a strong foundation within community regeneration areas. There is now the opportunity to build on these through the development of a neighbourhood based decision-making process which would allow the allocation of CRF resources based on local priorities.

7.3.4.3 Local Community Regeneration Forums will consist of community representatives from each neighbourhood and representatives of the Neighbourhood Partnership Network, supported by the relevant Communities Officer and the Community Regeneration Team (replacing the SIP Implementation Team) and elected members in an ex-officio capacity. The LCR Forum would have the responsibility of allocating a delegated budget on major projects together with a small grants fund. This would allow for dedicated resources to respond to issues which local people had identified as priorities in, for example, the local community plan, providing they contribute directly to the Dundee Partnership Regeneration Outcomes (See Appendix A)

Five Local Community Regeneration Forums will therefore be established to recommend allocations of delegated CRF on local projects and small grants. The draft

Code of Conduct which will underpin the work of all members of these groups is shown in Appendix G.

7.3.4.4 The budget available for distribution in 2005/06 is £2,480,258. The BNSF Co-ordinated Neighbourhood Management Initiative will invest a further £536,000 in Kirkton and Hilltown in 2005/06 giving a total of £3.4 million invested in those neighbourhoods over 4 years. Officers of the Council recommend that this additional funding be taken into account when calculating an equitable distribution of funding among CRAs and that the following allocation be made:

Area		%	Allocation
CRA 1	Menzieshill (part)/Charleston/Lochee/Beechwood	24.1	597,742
CRA 2	St Marys/Ardler/Kirkton	12.9	319,953
CRA 3	Hilltown/Stobswell/Fairmuir	23.6	585,340
CRA 4	Mill O'Mains/Finty(part)/Whitfield(part)	16.0	396,841
CRA 5	Mid Craigie/Linlathen/Douglas	23.4	580,380

7.3.4.5 This proposal will be discussed with members of the Dundee Partnership and any requests for amendment will be reported to Policy and Resources Committee. The long term approach to allocating funds to Local Community Regeneration Forums, including the distribution among clusters in future years will be addressed by the Building Stronger Communities theme group of the Dundee Partnership which is to be augmented by community representatives from each cluster.

## 8. COMMUNITY REGENERATION AREAS AND CLUSTERS

The Scottish Index of Multiple Deprivation 2004 measured deprivation across the country and presented information for Dundee based on 179 datazones. Using this information, officers have mapped those data-zones in the most deprived 15% which are situated in Dundee and these form the core of the proposed Dundee Partnership Community Regeneration Areas. The guidance allows partnership to "soften" the boundaries to create Community Regeneration areas which match natural communities. In defining the proposed boundaries, the following principles are applied:

- All datazones in the worst 15% are included.
- The arbitrary nature of the datazones can skew results. Areas of deprivation appear excluded because they are measured alongside relatively prosperous housing. In such cases smaller areas of deprivation are included.
- Natural community boundaries are applied where these are not replicated by datazones.
- Some areas are within the worst 16-20% of datazones. In these cases, they are included only if they are within a natural community and the majority of that community is in the worst 15%.

As a result, all or part of the following areas are included:

Ardler

Beechwood

Charleston

Douglas	Fintry (part)	Hilltown
Kirkton	Lochee	Mid Craigie/Linlathen
Menzieshill (part)	St Marys	Stobswell
Whitfield (part)	Fairmuir	Mill O'Mains 3

Appendices B to F show the proposed boundaries and CRA "clusters" which will guide regeneration in Dundee. These proposals are consistent with Local Community Plan, Neighbourhood Partnership Networks and Community Learning and Development action plan areas.

- |    |                   |  |
|----|-------------------|--|
| 1. | Dundee North West | (St Mary's/Ardler/Kirkton)                 |
| 2. | Dundee West       | (Menzieshill/Charleston/Lochee/Beechwood)  |
| 3. | Dundee Central    | (Hilltown/Fairmuir/Stobswell)              |
| 4. | Dundee North East | (Mill O Mains/Fintry(part)/Whitfield(part) |
| 5. | Dundee South East | (Linlathen/Mid Craigie/Douglas)            |

The areas and clusters identified in Appendices B to F have been agreed as the Dundee Partnership Community Regeneration Areas.

## 9. **LEARNING FROM SOCIAL INCLUSION PARTNERSHIPS AND BETTER NEIGHBOURHOOD SERVICES FUND**

9.1 The Community Regeneration Fund replaces the existing Social Inclusion Partnership and Better Neighbourhood Services Fund programmes and builds on the lessons and good practice from these programmes.

9.2 The Better Neighbourhood Services Fund has supported the Co-ordinated Neighbourhood Management Initiative in Kirkton and the Hilltown and the Support to Young People Initiative. These BNSF initiatives end in March 2006 and June 2006 respectively and thus strengths will be taken forward through the Community Regeneration Fund.

- Local Community Regeneration Forums will continue the concept of improved neighbourhood management and will have the capacity to fund this type of activity through the delegated local budget.
- The focused additional support to vulnerable young people from areas of deprivation will be addressed through the roll out of Integrated Community Schools, and particular service provision maintained through the Xplore Project which is to be allocated additional CRF resources for this purpose.

9.3 Each Social Inclusion Partnership project has been subjected to an assessment of current performance, match to the new Dundee Partnership Regeneration Outcomes, value for money within the project and across the programme. As a result all SIP projects have been allocated one of the following categories:

Category 1	-	Funding allocated for three years (first year guaranteed, years 2 and 3 subject to allocation from Scottish Executive)
Category 2	-	Funding allocated for three years (subject to review at end of year one, to ensure that new conditions have been met, and allocation from Scottish Executive)
Category 3	-	No funding allocated from Community Regeneration Fund therefore existing SIP funding to end in March 2005

9.4 Appendix 9 contains overall recommendations identifying categories for projects.

9.5 This assessment confirms that the majority of SIP projects will be able to make a direct contribution to the achievement of the Regeneration Outcomes and build on the experience which they have developed over recent years.

## 10. **FUNDING ALLOCATION**

10.1 It is recommended that the following allocations be made from the Community Regeneration Fund:

- Staff Budget for Implementation Team  
2005/6 - £331,337    2006/7 - £366,215    2007/8 - £382,580
- Administration Fee (calculated at 2.5% of total fund)  
2005/6 - £144,375    2006/7 - £127,462    2007/8 - £148,175
- Monitoring and Evaluation  
2005/6 - £80,000    2006/7 - £70,000    2007/8 - £90,000
- Committed Projects (Years 2 & 3 subject to allocation from Communities Scotland)  
2005/6 - £2,739,030    2006/7 - £3,033,009    2007/8 - £3,196,917
- Balance available for allocation by Local Community Regeneration Forums (see 7.3.4.4 for proposed distribution) (Years 2 & 3 to be calculated once details of allocation from Communities Scotland is examined)  
2005/6 - £2,480,258

10.2 The proposals contained in this report therefore recommend the allocation of £3,294,742 from the budget of £5,775 million for the year 2005/6. Scottish Executive allocations for 2006/7 and beyond have yet to be examined in detail and recommendations contained in this report for years 2 and 3 are therefore conditional.

## 11. **CONSULTATION**

11.1 Various groups within the Dundee Partnership, the SIP Board and Council Departments have been consulted during the preparation of this report.

## 12. **BACKGROUND REPORTS**

None.

Chris Ward  
Assistant Chief Executive (Community Planning)..... 14/12/2004

**Dundee Partnership Regeneration Outcomes 2005-08**

1 Building Strong, Safe Communities

- a) Increase the quality and variety of affordable homes
- b) Increase resident satisfaction with quality of, and access to and local services, facilities and the environment
- c) Reduce reported levels of anti-social behaviour, crime and fear of crime
- d) Increase neighbourhood stability
- e) Implement and review Local Community Plan

2 Getting People Into Work

- a) Increase the number of economically active people
- b) Increase the proportion of 16-19 year olds in training, education or employment
- c) Reduce the number of low income households
- d) Increase availability of affordable and accessible childcare

3 Improving Health

- a) Improve the sexual health of young people
- b) Reduce levels of smoking, alcohol and substance misuse
- c) Increase levels of physical activity
- d) Improve diet and nutrition
- e) Improve access to health services
- f) Improve mental health and well being

4 Raising Educational Attainment

- a) Increase attainment of qualifications and skills
- b) Increase proportion of school leavers entering further/higher education
- c) Increase levels of numeracy and literacy
- d) Increase lifelong learning activity

5 Engaging Young People (ages 5-18)

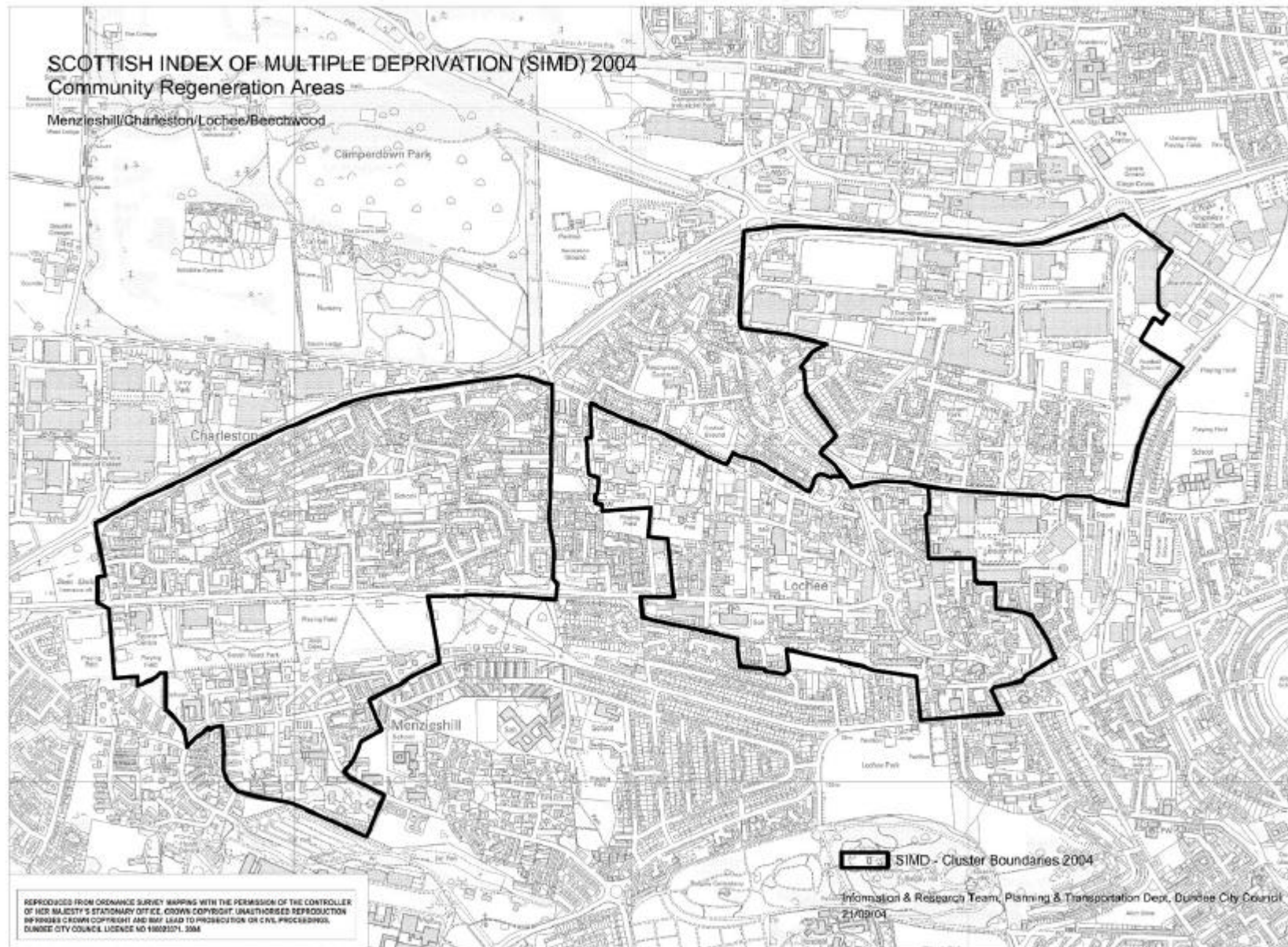
- a) Increase availability and participation in activities for children and young people
- b) Increase influence of children and young people in decision-making
- c) Increase confidence/self-esteem of children and young people

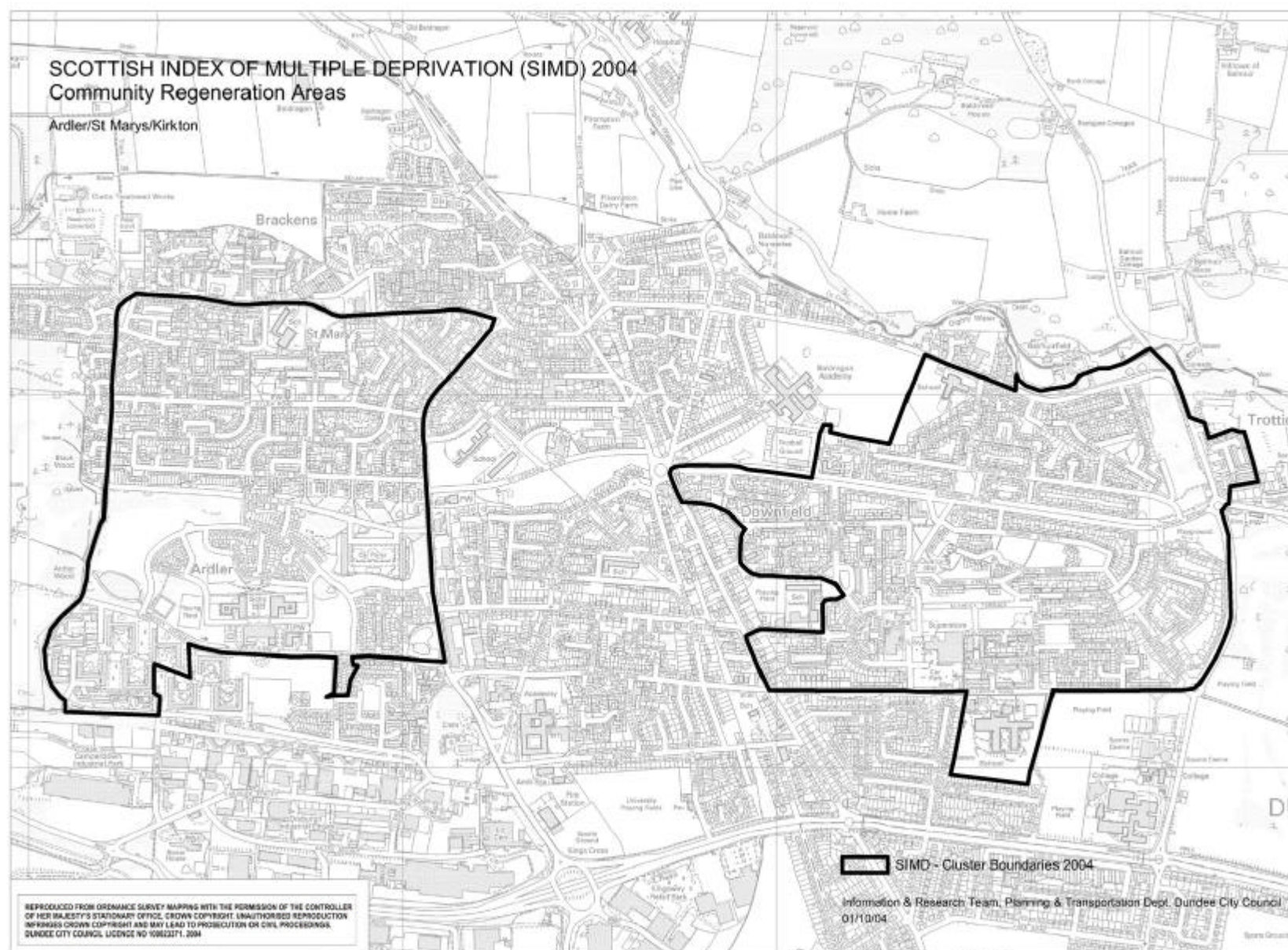
6 Effective Community Engagement

- a) Increase engagement with minority/vulnerable/excluded groups
- b) Increase level of participation in community and voluntary activity
- c) Improve standards of community engagement and capacity building
- d) Increase number of community representative and decision-making organisations

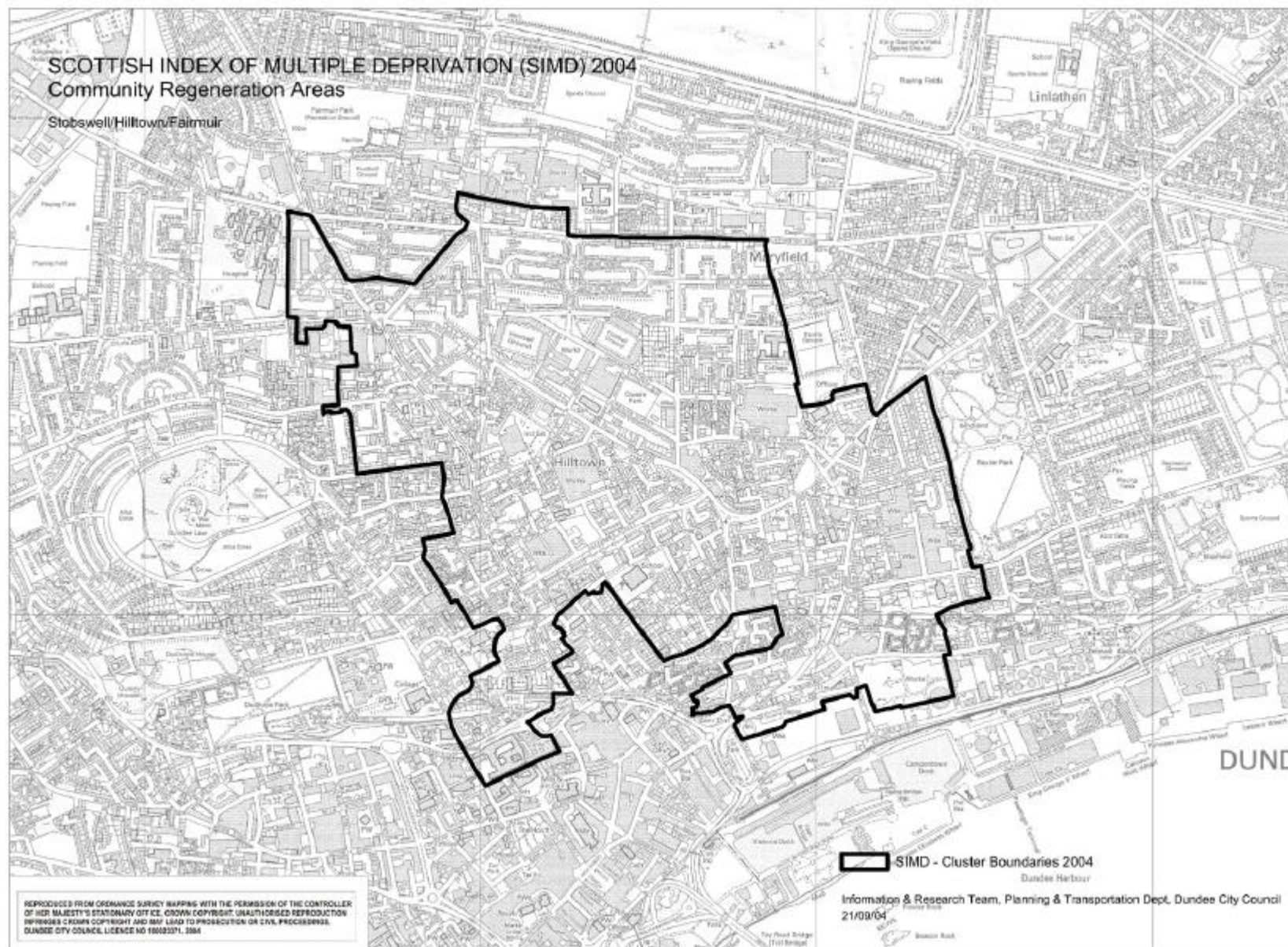


## Menzieshill/Charleston/Locher/Beechwood

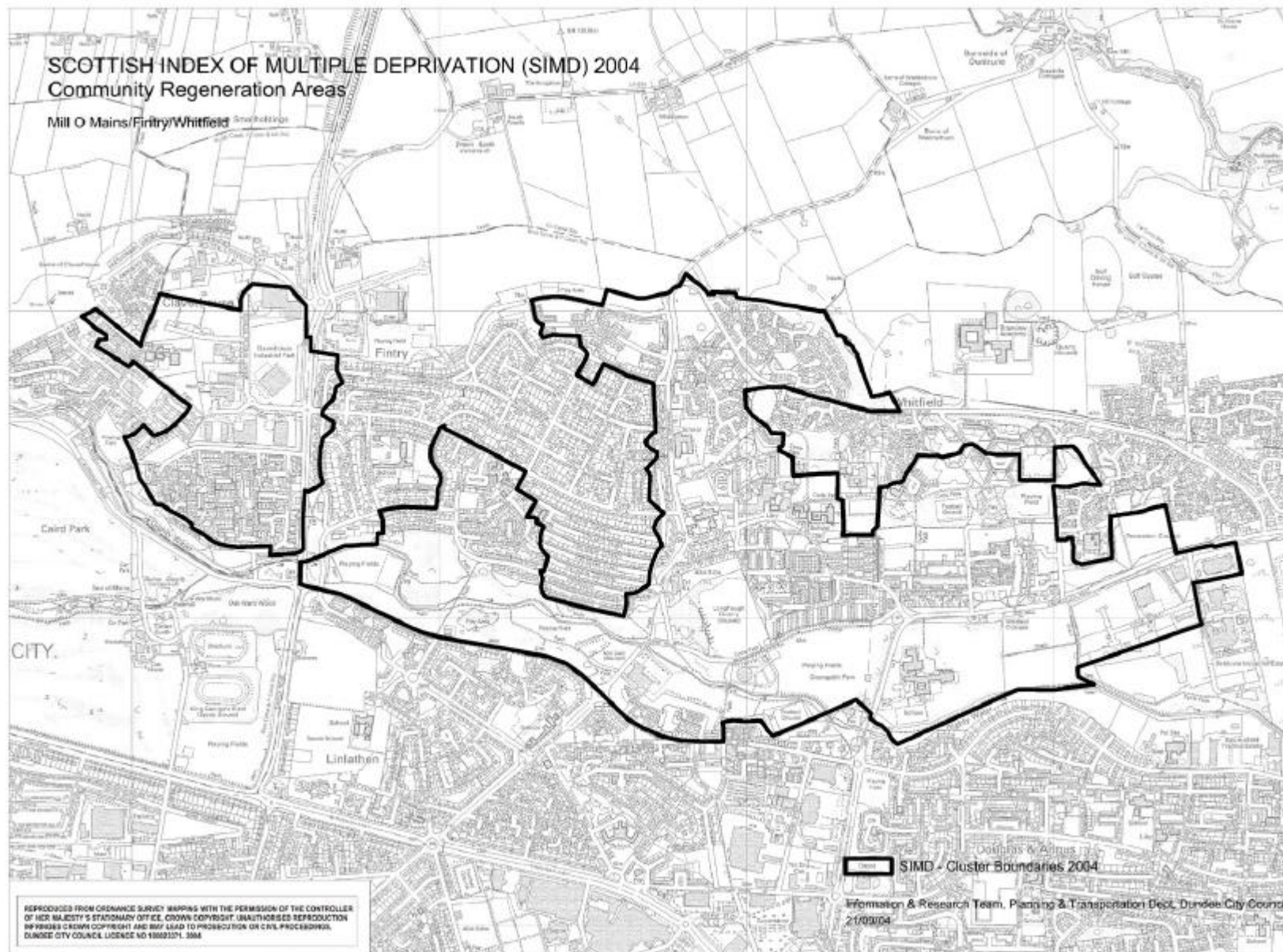




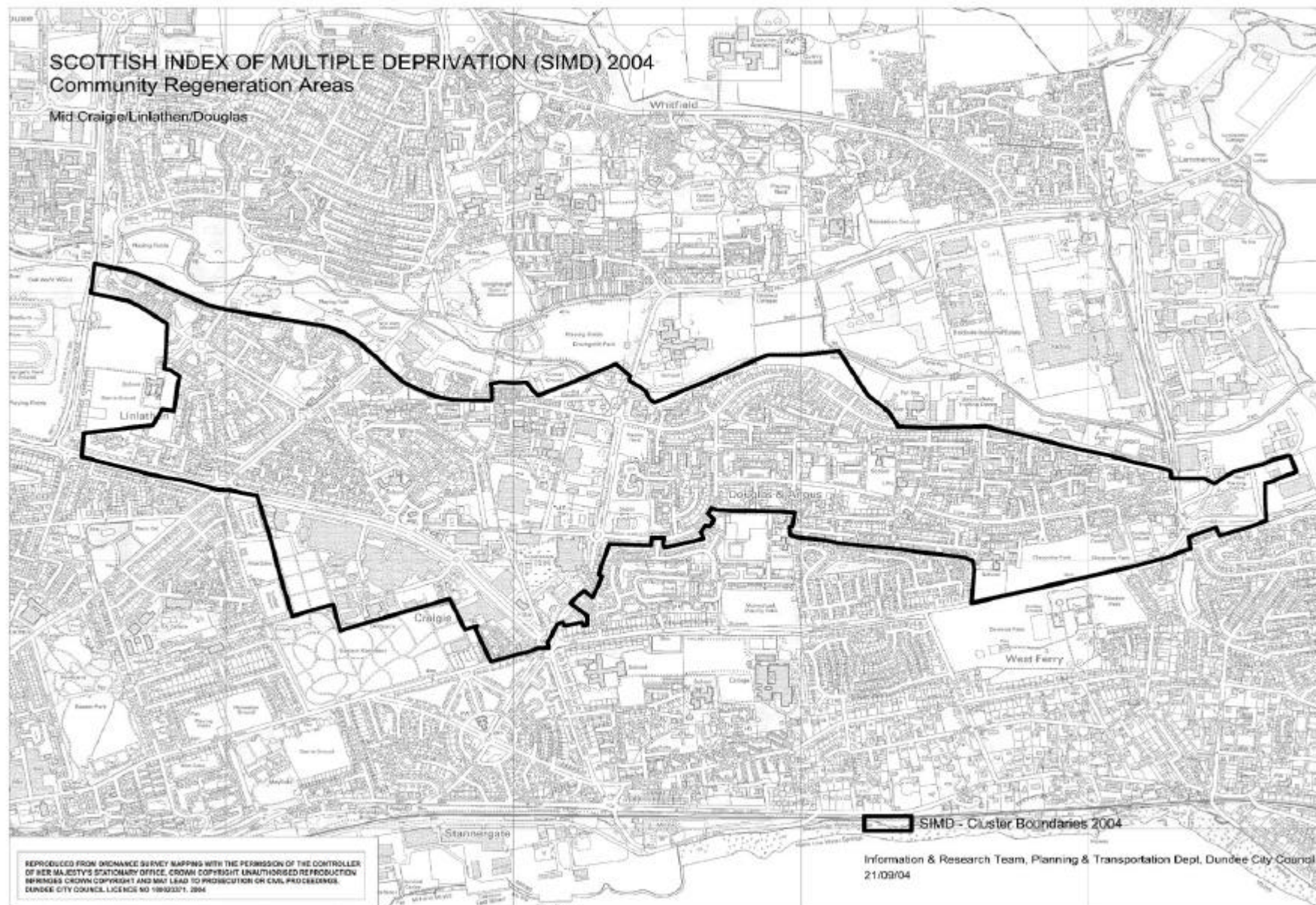












**Appendix G - Community Regeneration Fund Allocation 2005/6**

<b>No</b>	<b>Project Title</b>	<b>Project Description</b>	<b>Category</b>	<b>Funding</b>
1	ACCESS TO LEARNING	Project provides ethnic minority mothers of pre-school children with the necessary knowledge, confidence and life skills to actively engage in their children's early education and subsequently integrate into wider society.	1	£30,429
2	BROOKSBANK PARTNERSHIP	Brooksbank is a medium sized centre managed in partnership between Dundee City Council, Money Advice Support Team and Dundee Anti-Poverty Forum. The Centre provides a facility in Mid Craigie/Linlathen and offers a range of services and facilities which are used extensively by the local community, voluntary sector and statutory bodies. Stewardship and maintenance towards a resource base for SIP and community projects enabling local residents access to money management, legal and health support and information. By locating many projects in one building the providers have developed an integrated advice service for individuals. Additional maintenance, repair and stewarding support in evenings and at weekends to maximise use of facility.	1	£31,723
3	COMMUNITY LANGUAGE CLASSES	Provision of community language classes to children, young people and adults by Dundee Community Language Advisory Group (DCLAG)	1	£39,726

<b>No</b>	<b>Project Title</b>	<b>Project Description</b>	<b>Category</b>	<b>Funding</b>
4	DIGHTY ENVIRONMENTAL GROUP	The Dighty Environmental Group is an entirely volunteer group that works throughout the year to ensure that the Dighty Waters and its tributaries are managed and kept free of debris. The Group works in partnership with a range of agencies including Dundee City Council, local schools and academic organisations. In addition to clearing of Dighty waters the group carries out environmental clear-ups of SIP community areas, maintains wildlife sites and picnic areas and provides opportunities for conservation training	1	£10,792
5	DRUG AND ALCOHOL FREE TIME (DAFT)	The aims of DAFT are 'to prevent young people becoming involved with drugs or developing patterns of drug misuse by offering a drug free environment where they can access resources, services, information, training and have fun'.	1	£32,477
6	DUNDEE ANTI- POVERTY FORUM	Provides office resources to SIP/poverty action groups; promotes networking and collaboration of anti-poverty organisations at local/national levels; raises awareness, disseminates information; supports running of Brooksbank Centre.	1	£59,151
7	DUNDEE BUSINESS SUPPORT GROUP	Links community based groups and organisations with companies that are willing to offer expertise or skills for community development. Has developed a database of interested companies.	1	£27,799
8	DUNDEE DRUGS AND AIDS PROJECT	The central focus of the Drug Support Worker post from the Dundee Drugs and Aids Project post is to work with adult drug users in partnership with the Highwayman Youth and Community Centre. Open access to drug support is available during lunch-time drop-in hours, 11am-2.30pm.	1	£33,544

<b>No</b>	<b>Project Title</b>	<b>Project Description</b>	<b>Category</b>	<b>Funding</b>
9	DUNDEE EMPLOYMENT AND AFTERCARE PROJECT	Provides an employment placement, job specific and personal development training and aftercare service for the unemployed, labour-market returners and other excluded groups of clients. Holds outreach Job Shops in SIP communities.	1	£126,771
10	DUNDEE ENERGY EFFICIENCY ADVICE PROJECT	Provides advice on energy use, heating etc. Holds advisory sessions before/after central heating installed in local authority houses, attends events and holds surgeries on economic energy use; runs advocacy service for clients dealing with utility companies; makes referrals for Warm Deal grants.	1	£40,215
11	DUNDEE INTERNATIONAL WOMEN'S CENTRE (Building the Future)	DIWC is an ethnic minority women's organisation providing learning opportunities, support and a range of other services. SIP funding awarded to support the project to move towards independence and to identify new premises.	1	£20,330
12	DUNDEE NORTH LAW CENTRE	The principal work of Dundee North Law Centre is the provision of legal advice, assistance and representation, with the clients being seen in the communities in which they live. Main subject areas include legal advice on matters relating to housing, benefits, money/debt, employment, criminal injuries etc. The project also provides legal advice and assistance to voluntary organisations in SIP areas.	1	£162,749
13	ETHNIC MINORITY MOTHERS' TRAINING (Fair Play)	The project will bring together women of ethnic minorities within SIP areas and will provide informal learning and discussion sessions, accredited courses in childcare leading to employment as crèche workers/further education/further informal learning.	1	£21,150



<b>No</b>	<b>Project Title</b>	<b>Project Description</b>	<b>Category</b>	<b>Funding</b>
14	FINTRY NORTH YOUTH PROJECT	The Fintry North Youth Project is a youth facility in the Fintry North area, based at the Family Learning House. The project engages with young people in the area, encouraging them to become involved in various activities as an alternative to vandalism etc. The project is supported by a team of four youth workers and is managed by local people.	1	£16,469
15	HEALTHY LIVING INITIATIVE	To support/encourage local people to become involved in community health issues; to co-ordinate community based health service provision; to improve access to health advice and information; to ensure that community health needs are included in policy and planning procedures.	1	£54,679
16	HIGHWAYMAN YOUTH & COMMUNITY CENTRE	Provides a meeting place and facilitates services for young people, unemployed adults, women, older people and local community. Includes adult learning, café, childcare facility, sports outreach, youth work and health promotion; facilitates local drug intervention activities.	1	£136,676
17	HILLTOWN OUTREACH TRANSLATION SERVICE	Supports Urdu/Punjabi speaking communities improving access to and uptake of services and community integration by providing translation services.	1	£23,997
18	KIDDIE KARE – HOME SAFETY	Provision and installation of a range of home safety equipment to low income families with young children to reduce the number of home accidents. Collaborative work with Health Visitors, Social Work Department and voluntary sector organisations to identify families for referral to the project.	1	£30,080

<b>No</b>	<b>Project Title</b>	<b>Project Description</b>	<b>Category</b>	<b>Funding</b>
19	KNOW THE SCORE - PEER EDUCATION PROJECT	Offers a range of activities and opportunities to young people to tackle drug use and related issues and minimise health risks. Enhances personal and social development by training 13-15 year olds as peer educators and supporting them in the delivery of a 6 week programme to P7 children. Offers parent, carer, local community workshops and information sessions.	1	£71,468
20	MAXWELLTOWN INFORMATION CENTRE	Provides support and resources for voluntary, community and statutory organisations; accommodation for advice and information surgeries; focus for community activity and regeneration; ethnic integration.	1	£30,980
21	MID CRAIGIE/LINLATHEN UNDER 12s PROJECT	Promotes employment and training by providing affordable childcare and recreational/educational work with children, young people and their families. The resource provides accommodation for other advice and support agencies and offers volunteering opportunities.	1	£77,755
22	MID LIN DAY CARE (SHOPPING SERVICE)	Collecting and transportation of older clients, many with mental and/or physical health problems, from homes to community centre for lunch, with further opportunity of transport and supported visit to shops. Enables as independent a lifestyle as possible. Programme of arts and crafts activities developed with client input.	1	£6,775

<b>No</b>	<b>Project Title</b>	<b>Project Description</b>	<b>Category</b>	<b>Funding</b>
23	MONEY ADVICE SUPPORT TEAM	Information and support service for those suffering financial hardship (debt & consumer credit). Income maximisation through welfare benefit checks, negotiation with creditors, budgeting advice, prioritisation of expenditure, advocacy, representation in debt-related court proceedings.	1	£149,477
24	OLDER PEOPLE ENGAGING NEEDS (OPEN)	To provide social, educational and recreational activities for older people throughout the city. The focus is on tenants in sheltered housing complexes but will extend to other providers for this age group.	1	£30,000
25	PASSPORT TO SPORT	Passport to Sport is a summer holiday discount scheme for all children and young people in Dundee. The Passport gives reduced price entrance to Olympia and Lochee Swim Centres, discounted travel with Travel Dundee as well as other public and private leisure facilities. SIP funding supports the discounted entry fee to Olympia and Lochee Swim Centres.	2	£22,544
26	SMALL GRANTS SCHEME	Provides funds of up to £5,000 per application to extend or accelerate local community activity in SIP1/2 neighbourhoods, based on SIP Regeneration Strategy.	1	£125,000
27	STOBSWELL YOUTH STRATEGY	The Stobswell Youth Strategy is a developmental project which has evolved from pilot work carried out in the area. The Stobswell Youth Strategy now has: 2 youth action groups, a football drop-in group, youth consultation events, youth information café drop-in at Arthurstone library and supports young people's participation in local community events.	1	£12,483

<b>No</b>	<b>Project Title</b>	<b>Project Description</b>	<b>Category</b>	<b>Funding</b>
28	WOMEN'S SUPPORT AND TRAINING INITIATIVE	Provides support and information to women survivors of rape and sexual abuse, their partners, family, friends and workers. Outreach worker provides easier accessibility. SIP funding for running awareness-raising workshops and self defence sessions; established groups in SIP areas recruiting local women as volunteers; extended telephone Helpline support times.	1	£59,846
29	XPLORE	Xplore is a partnership of public, private and voluntary organisations. A team of Youth Counsellors works closely with various agencies most likely to be in contact with young people. Their role is to complement this work by bringing extra resources to young people so that they can overcome barriers and choose positive lifestyles. Xplore helps young people from 11-18 years who are finding it hard to cope at school, home, work or in their community.	1	£454,754
30	YOUTH SPORTS DEVELOPMENT PROJECT	The Youth Sports Development Project provides a wide range of sports and physical activities for children and young people in SIP areas as a means of promoting social inclusion, self confidence and skills. The project's team of Youth Sports Officers, coaches and volunteers work innovatively with local children young people, adults groups and agencies to develop sustainable provision in SIP communities. Its main programmes include work with pre-school children, community based sports provision and work with young people to enhance their confidence, skills and education/employment opportunities through sport.	1	£80,005

<b>No</b>	<b>Project Title</b>	<b>Project Description</b>	<b>Category</b>	<b>Funding</b>
31	COMMUNITY REGENERATION FUNDING STAFFING	Running costs associated with staff providing support to Community Regeneration process.	1	£23,781
32	ARDLER URBAN RANGER	Project aims to enhance the conservation value of the area by encouraging community involvement through local primary school, recruitment and volunteers and work with existing local projects. Emphasis to be placed on engaging with young people aged 5-25.	2	£28,629
33	COMMUNITY VOLUNTEER INITIATIVE	Promotes the concepts of volunteering; recruits volunteers, encourages agencies/groups to involve and associate volunteers with engagers; identifies and disseminates best practice, produced information on volunteering opportunities. Links with citywide Volunteer Information Point	2	£42,811
34	ENTERPRISE ADVICE PROJECT	Provides business development support to SIP residents who are geographically isolated from mainstream services; proactively encourages change of attitude with own-business start-up as a viable option to unemployment; awards small start-up grants.	2	£59,289
35	HILLTOWN INITIATIVE	CHILDCARE Three service providers (Grey Lodge, Highwayman Youth & Community Centre, Hilltown Out of School Club) offer A) childcare enabling parents to take up work or training and B) after-school children's clubs. Provides opportunities for children to interact socially and to develop confidence and skills through various activities. Information Worker supports strategic planning and promotion, maintains database and has developed service booklet and produces regular local childcare newsletters.	2	£71,207

<b>No</b>	<b>Project Title</b>	<b>Project Description</b>	<b>Category</b>	<b>Funding</b>
36	KIRKTON/ARDLER YOUTH WORK STRATEGY	The primary aim of the Kirkton/Ardler Youth Work strategy is to increase engagement with young people in these communities, to increase their capacity to influence decision-making and enhance their community identity. The strategy is implemented by supporting young people to participate in a Stakeholders' Forum which has responsibility for decision making on grant funding awards to local organisations and groups that work with children and young people.	2	£52,171
37	LEARNING AROUND	Provides information, advice and guidance on training, further education and employment opportunities; assists with CVs, interview preparation and learning support to SIP residents; links to DEAP, makes referrals to specialist provision, formalised training and employment opportunities; outreach activity to seek out excluded individuals/groups.	2	£93,686
38	LINKING EDUCATION AND DISABILITY (LEAD)	Proactive planning and enabling of training and learning opportunities for disabled young people aged 16 and over living in SIP1 areas; individual support by volunteer mentors throughout 4-18 month training period provides flexibility for periods of client ill health.	2	£30,330
39	SHELTERED HOUSING SHOPPING SCHEME	Project provides transport for frail, elderly or disabled residents living in SIP sheltered housing complexes to town centre shops extending independence, offering community integration and lifestyle inclusion and poverty reduction.	2	£23,000

<b>No</b>	<b>Project Title</b>	<b>Project Description</b>	<b>Category</b>	<b>Funding</b>
40	St MARY'S YOUTH PROVISION	The St Mary's Youth group was established in April 2003 after consultation with young people as a response to the issue of no youth provision in the area. The group now meets on two evenings per week in St Columba Lounge and the TA Hut, supported by Communities Workers based at Ardler Complex; one session each for 11-14 years and 15-18 years. The groups are involved in various social, recreational and educational activities. A local streetwork programme is also underway in conjunction with Tayside Police.	2	£7,628
41	STOBSWELL DRUGS WORKER (ABERLOUR OUTREACH DUNDEE)	Aberlour Outreach Dundee is part of Aberlour Child Care Trust which has projects throughout Scotland. Dundee Outreach is part of the Dependency Sector which supports families affected by parental substance misuse with children up to 12 years to make positive changes in order to primarily benefit the lives of the children. This service provision targets vulnerable families in Stobswell with a discreet and confidential approach to enable family members to make changes which allow them to access local services and activities with confidence.	2	£22,428
42	THE CORNER	Offers health, education and leisure activity information service for young people in informal setting in city centre; provides drop-in and outreach service including health awareness events, confidential individual support service, contraception/pregnancy testing and some screening services; provides advocacy and collaborative access to other agencies' services.	2	£88,273

<b>No</b>	<b>Project Title</b>	<b>Project Description</b>	<b>Category</b>	<b>Funding</b>
43	Whitfield Inclusion Network Group (WING)	<p>WING is a community representative group in Whitfield set up to:</p> <ul style="list-style-type: none"> <li>• Enable local residents to speak up and speak out on issues that affect them</li> <li>• Build an action plan for the benefit of the whole area</li> <li>• Campaign on behalf of and with the community at every opportunity.</li> </ul> <p>The group provides admin services to other local groups, facilitates the use of the community room in the Community Services Complex and takes a leading role in organising various community events.</p>	2	£23,775
44	TARGET HARDENING – HOME SECURITY	Project reduces multiple intruder break ins and reduces likelihood of break ins and fire deaths.	2	£20,000
45	STOBSWELL FAÇADE ENHANCEMENT	Project enhances district shopping facility by upgrading core retail area	2	£18,000
46	YOUNG CARERS' PARTNERSHIP	The Young Carers' Partnership was established in 2000 to respond to the needs of young carers under 18 who provide help and care for a member of their family. The key objectives of the Partnership are to support young carers' positive lifestyles and relationships, prevent and reduce the exclusion of young carers, develop partnerships for sustainability of young carers' support, change public attitudes to young carers and identify hidden young carers.	2	£114,178



<b>No</b>	<b>Project Title</b>	<b>Project Description</b>	<b>Category</b>	<b>Funding</b>
47	CHARLESTON PARENT AND TODDLER GROUP	<p>The Charleston Parent and Toddler Group is a drop-in group which meets 4 mornings per week at Camperdown Parish Church. The group provides opportunities for children to participate in free play and social interaction as well as structured play sessions by a qualified crèche worker. Parents have the opportunity to socialise with others and be encouraged in positive interaction with their children.</p> <p>The group particularly aims to support individuals and families who are experiencing difficulties as a result of substance misuse, low self-esteem or low parenting skills.</p>	3	None
48	HILLTOWN DRUGS INTERVENTION WORKER	Provision of support, information and advice to drug users on an informal, regular basis by staff from Tayside Drug Problem Centre. Clients can also be seen on an appointment basis.	3	None

**LOCAL COMMUNITY REGENERATION FORUMS - CODE OF PRACTICE**

**INTRODUCTION**

At its meeting on 3 December 2004 the Dundee Partnership's Building Stronger Communities Group approved this code of practice.

The production of local community plans and the agreement that decisions are made at a local level have created the space for the development of Community Regeneration Forums.

The purpose of the Forum will be to meet local needs and address the aspirations of the Regeneration Outcome Agreement. This agreement (and its completion) ensures a funding contribution from the Scottish Executive. The Forum will also draw on local community plans when making decision on expenditure.

Decisions taken in relation to this funding will take account of the guidelines and conditions outlined by Communities Scotland and will require to comply with the Standing Orders of Dundee City Council as the Partnership's Accountable Body.

**1. VOTING MEMBERS**

- 1.1 There will be up to five community representatives (people living within the cluster) for each agreed community (this number should include at least one representative from any Recognised Neighbourhood Structures within the cluster).
- 1.2 Voting members should reflect as far as possible the range of organisations/interests/and communities which go to make up the cluster.
- 1.3 Places are not transferable between different communities within the cluster.
- 1.4 When there are fewer members from any given community than approved places, it will be up to the Forum to appoint or co-opt members from that community to serve until the next Forum election.

## **2. SUPPORTING MEMBERS**

- 2.1 Two designated Officers from the Neighbourhood Partnership Network and its Chairperson.
- 2.2 A voluntary sector representative from the Community and Voluntary Alliance (CAVA).
- 2.3 The Community Regeneration Worker and the Communities Officer.
- 2.4 Local Elected Members whose wards cover part or all of the CRF cluster.
- 2.5 No member of the Forum can act both as a voting and supporting member.

## **3. DECISION MAKING AND VOTING**

- 3.1 Whenever possible, decisions will be reached by consensus. Where this is not possible, a vote will be required. For a decision to be accepted a simple majority of (voting) members present must vote in the affirmative. The chairperson will not have a casting vote. Where a vote has been taken, all votes cast will be recorded.

Decisions taken by the Forum must be in accordance with the conditions laid down in the Code of Practice and any conditions set out by Communities Scotland.

- 3.2 In the case of a decision requiring to go to a vote only those members of the community (outlined at 1.1) shall be eligible to vote.

## **4. CHAIRING**

- 4.1 The meetings shall be chaired by a representative of the local community.
- 4.2 The chairperson of the Forum shall be elected, at its first meeting, by all voting members. The office of chairperson shall (ordinarily) last for one year. The chairperson will stand down at the end of each year but be eligible for re-election on up to two successive occasions.
- 4.3 Forums should make provision for a vice-chairperson to take on the role of the chairperson in their absence.

## **5. STATUS OF MEMBERS**

- 5.1 All voting members shall have equal status at meetings. Members will have equal access to information. When information is distributed to Forum members it will be made available to all members at the same time.
- 5.2 All members of the Forum must show respect towards each other. If any member of the Forum is considered by another member not to be acting in accordance with the Code of Practice they may, by collective decision of the Forum, be asked to leave the meeting.
- 5.3 Once appointed to serve on a Forum, members will be expected to work for the benefit of the cluster as a whole. They should, therefore, be accountable to each other and not specifically to the organisation or group, which may have promoted their appointment.
- 5.4 Representative of the NPN (Neighbourhood Partnership Network), that attend the Forum shall in conjunction with the Communities Officers be responsible for communicating all appropriate information to community planning partners.
- 5.5 Additionally it should be made clear that those voting members of the Forum are elected as 'members of the community they live in'. As such they require to reflect a range of considerations when making decisions rather than representing the views of any one group.
- 5.6 This does not mean that members of the Forum are not encouraged to communicate with organisations they may be a part of, on the contrary. However, those that attend Forum meetings should not be seen as being mandated by specific organisation.

## **6. MEETINGS**

- 6.1 The Forum will normally meet monthly. A timetable of meetings will be drawn up at the beginning of each year. Any changes to this timetable, including additional meetings, will be notified to members at the earliest possible time, and no later than seven days before a pre-arranged meeting.

- 6.2 The venue and timing of meetings will be organised to ensure that members can contribute. Every effort will be made to ensure the accessibility needs of Forum members (and potential members) are addressed.

## **7. QUORUM**

The quorum for the Forum will be at least two voting members from each area making up the cluster (i.e. – 2/2/2).

## **8. ATTENDANCE AT MEETINGS**

- 8.1 It is expected that all members of the Forum shall attend each meeting. It is recognised, however, that there may be times when individual members cannot attend. In such case the member should submit apologies to the chairperson prior to the meeting.
- 8.2 If a voting member does not attend, or tender apologies for three consecutive meetings, their membership of the Forum will be deemed to have ended. Action will then be taken to find a replacement.
- 8.3 Non voting members can where required send a substitute, where this is notified to the chair in advance.

## **9. COMMUNICATION OF DECISIONS/RECOMMENDATIONS**

- 9.1 A record of all Forum meetings will be kept in writing by the Community Regeneration Worker and distributed to members of the Forum in each cluster. Minutes of the previous meeting will be distributed to all Forum members after a Forum meeting. An agenda will be circulated seven days prior to the date of the next timetabled Forum meeting.
- 9.2 The recommendations of the Forum shall be reported to the Building Stronger Communities Theme Group in the form of a report prepared by the C.R.F. Co-ordinator.
- 9.3 The Forum will elect one of its voting members to attend the Building Stronger Communities Theme Group on its behalf. (A reserve nomination can also be made).

9.4 While the authority to allocate the CR Fund has been delegated to Local Forums, Dundee Partnership reserves the right (with due reason) to require a Forum to reconsider its position.

9.5 Recommendations of the Forum will be reported in public to Dundee City Council's Policy and Resources Committee as the accountable body.

## **10. RESPONSIBILITIES OF AND SUPPORT FOR FORUM MEMBERS**

10.1 All members of the Forum shall be responsible for ensuring that they complete a declaration of interest form. This will outline any personal or professional interest they have in relation to any matters that may be discussed by the Forum.

10.2 At meetings of the Forum members should identify to the chair if they have an interest to declare, and they should withdraw from discussion on the subject.

10.3 The chair of the meeting shall be supported to ensure the decisions of the meetings are carried out. This shall be done by any/all appropriate members of the Forum.

10.4 All members of the Forum attending on a voluntary capacity shall be entitled to support in terms of expenses, clerical support and childcare provision. (This will be outlined in a volunteering policy. Clerical support will be carried out by the Community Regeneration Team).

10.5 All members of the Forum shall be encouraged to take part in the ongoing training programme of the Forum.

10.6 All members of the Forum shall be encouraged to take part in ensuring that the work of the Forum reflects and develops the aspirations of the communities that make up the cluster. This should be done by the Forum having an agreed communication strategy.

## **11. REVIEW**

The membership and work of the Forum shall be reviewed each year in August. Retiring members of the Forum shall be eligible for re-election.

6 December 2004