

REPORT TO: PLANNING & TRANSPORT COMMITTEE - 10 DECEMBER 2007
REPORT ON: ROAD SAFETY PROGRESS REPORT 2007
REPORT BY: DIRECTOR OF PLANNING & TRANSPORTATION
REPORT NO: 564-2007

1 PURPOSE OF REPORT

- 1.1 The purpose of the report is to inform committee of the progress made in reducing road accident casualties in Dundee.

2 RECOMMENDATION

- 2.1 It is recommended that the Committee notes the progress made in reducing road accident casualties.

3 FINANCIAL IMPLICATIONS

- 3.1 There are no financial implications as a result of this report.

4 BACKGROUND

Road Safety Progress

- 4.1 Introduction

The Road Traffic Act 1988 places a statutory duty on the Council as the Roads Authority to carry out a programme of measures to promote road safety and prevent road accidents. This applies to the existing road network and new roads.

The importance of road safety is further emphasised within the Council's Local Transport Strategy (LTS) where safety is given prominence as one of five overarching Higher Level Objectives. The road safety component itself has the objective "to improve the safety of all travellers, giving particular emphasis to the safety of vulnerable road users, particularly children".

- 4.2 Government Targets

In March 2000 the Government set national road accident casualty reduction targets underpinned by a national road safety strategy. These targets are, compared to the average for 1994-1998, by the year 2010 to achieve a:

- 40% reduction in the number of people killed or seriously injured (KSI);
- 50% reduction in the number of children killed or seriously injured (KSI);
- 10% reduction in the slight casualty rate (slight injuries per 100 million vehicles kilometres).

4.3 Road Safety Initiatives

In aiming to achieve the adopted casualty reduction targets a number of organisations are involved. The key organisations involved in road safety in Dundee are the Council's Planning and Transportation, Education and Social Work Departments, Tayside Police and Tayside Health Board.

The multidisciplinary and integrated approach adopted by these agencies involves a number of engineering, enforcement, education and encouragement initiatives;

a Engineering

A mixture of engineering measures and techniques are used to improve safety on our roads, such as – traffic management, traffic calming and accident investigation and prevention (AIP). Each of these disciplines targets different accident types, but combine to reduce overall casualties. In addition, development control procedures and road safety audits are pursued to ensure that new developments and roads infrastructure are designed with safety in mind.

b Enforcement

Enforcement of traffic laws plays a crucial role in maintaining and improving road safety. Significant resources are devoted to enforcing speed limits, the drink driving law and other safety related legislation such as inappropriate parking. The Tayside Road Safety Camera Partnership's safety cameras at 7 sites in Dundee are a further tool in the enforcement strategy that has helped to reduce road casualties.

c Education

In addition to initiatives such as the written theory examination in the National Driving Test and driver awareness training, much emphasis is also placed on the education of children. Safer Routes to School initiatives are encouraged and will be reinforced with engineering measures where appropriate. The 20mph around schools in Dundee is a good example of this. Also the 'Safe Drive Stay Alive' road show is an annual event aimed at raising the Road Safety awareness of 16-17 year olds.

d Encouragement

Initiatives that encourage the use of child car seats and restraints, cycle helmets, lights and bright clothing, etc have a significant part to play in encouraging road users to adopt safe practices.

These specific road safety initiatives, combined with other initiatives that are not directly aimed at casualty reduction, such as pedestrian crossing facilities, pedestrianisation and environmental improvements, have all combined to significantly reduce the number of road related injuries in Dundee over the past few years.

4.4 Road Casualty Reduction Progress

The tables and graphs in Appendix A provide a breakdown of casualty reduction by casualty type.

a Number of People Killed or Seriously Injured (KSI)

The number of people killed or seriously injured in Dundee per annum has reduced from an annual average during 1994-1998 of 113.8 to 71 in the year 2006 (table 1). This represents a 38% reduction on the 1994-1998 average by the year 2006 and is just less than the national reduction target of 40% by 2010. Although the number of people killed or seriously injured has increased in 2006 in comparison to the 5 year 1994-1998 average, the latest 5 year period shows an average casualty reduction in excess of 40% and as can be seen from graph 1, the 5 year moving average indicates an overall downward trend in KSI casualties.

b Number of Children Killed or Seriously Injured (KSI)

The number of children killed or seriously injured in Dundee per annum has reduced from an annual average during 1994-1998 of 33.6 to 15 in the year 2006 (table 2). This represents a 55% reduction on the 1994-1998 average by the year 2006 and therefore exceeds the national reduction target of 50% by 2010. The 5-year moving average (graph 2) also indicates an overall downward trend. It will be a challenge to at least maintain and hopefully better this overall reduction as one child KSI casualty is one too many.

c Slight Casualty Rate (per million vehicle-kilometres)

The slight casualty rate (per 100 million vehicle kilometres) has reduced from an annual average during 1994-1998 of 55 to 42 in the year 2006 (table 3). This represents a reduction of 29% on the 1994-1998 average by the year 2006 and easily exceeds the national reduction target of 10% by 2010. The 5-year moving average (graph 3) also indicates an overall downward trend.

d All Slight Casualties

The number of people slightly injured in Dundee per annum has virtually remained constant at an annual average during 1994-1998 of 344 to 345 in the year 2002. In year 2003 there was a reduction in slight casualties and this was sustained during 2004 and 2005. In year 2006 (table 4) there has been an increase in the number of slight casualties however the 5-year moving average (graph 4) indicates an overall downward trend

It should be noted that these figures relate only to the local road network within Dundee. The reason for this being that in the past Dundee City Council, through TPU on an agency basis, carried out road safety investigations and made recommendations for ameliorative measures on the Trunk Road network. However, since year 2001, this arrangement has ceased and Dundee City Council now has no input into road safety on the trunk road network in Dundee. Therefore, as the targets look toward 2010, the trunk road network has been excluded from the Council's road casualty statistics in both the base years 1994-1998 and in later years.

4.5 Cost to Society

Although significant casualty reduction has been achieved, 71 people killed or seriously injured in Dundee during 2006 is still far too high a figure. The cost to

society in economic terms through lost output, medical costs, pain, suffering, emergency service costs and damage to property for these 71 injuries is of the order of £13 million. In addition it must be remembered that there is real human grief and suffering experienced not only by those injured but also by friends and families. Furthermore, the perception of danger given by the occurrence of this number of casualties can provide a barrier to people's mobility and quality of life.

- 4.6 For all these reasons, it is essential that the excellent progress made in reducing casualties to date must be continued.

5 POLICY IMPLICATIONS

- 5.1 This Report has been screened for any policy implications in respect of Sustainability, Strategic Environmental Assessment, Anti-Poverty, Equality Impact Assessment and Risk Management.

There are no major issues.

6 CONSULTATIONS

- 6.1 The Chief Executive, Depute Chief Executive (Support Services), Depute Chief Executive (Finance), Head of Finance, Assistant Chief Executive (Community Planning) and the Chief Constable have been consulted and are in agreement with the contents of this report.

7 BACKGROUND PAPERS

- 7.1 None

Mike Galloway
Director of Planning & Transportation

Alan Lewis
Assistant Head of Transportation

AL/NG/EB

14 November 2007

Dundee City Council
Tayside House
Dundee

Table 1. Dundee City - Local Road Network, Killed and seriously injured (KSI) casualties, 1994-1998 average to 2006

All KSI Casualties	1994-1998 Average	1999	2000	2001	2002	2003	2004	2005	2006	% Change*
Pedestrian	59.2	36	39	31	25	21	32	26	36	-39%
Pedal Cycle	9.4	9	4	5	6	5	6	5	4	-57%
Motorcycle	6.4	4	5	5	4	3	5	7	4	-38%
Car/Taxi	32.8	32	17	36	30	29	15	13	26	-21%
Bus/Goods/Other	6.0	3	4	3	5	0	5	7	1	-83%
All	113.8	84	69	80	70	58	63	58	71	-38%

* Comparison between 1994-1998 average and 2006 data.

Graph 1. Dundee City - Local Road Network, Killed and seriously injured (KSI) casualties, 5-year moving average and yearly total

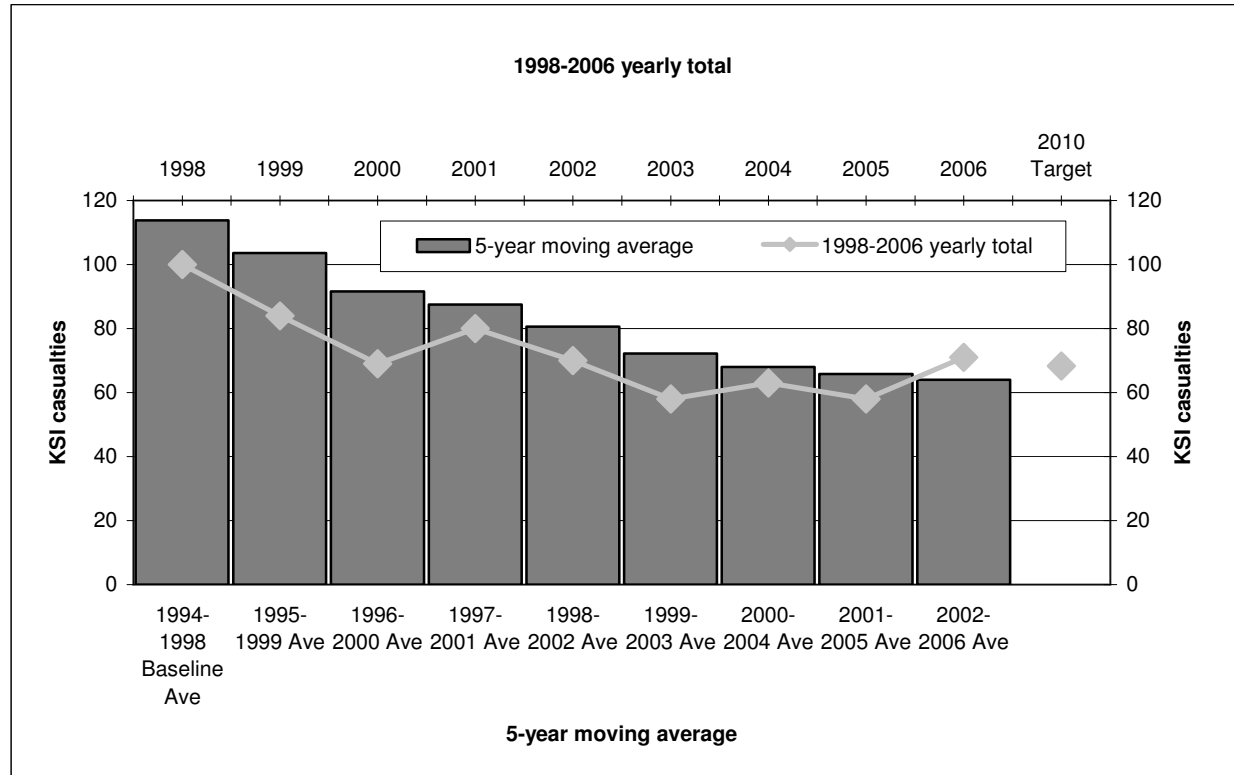


Table 2. Dundee City - Local Road Network, Child killed and seriously injured (KSI) casualties, 1994-1998 average to 2006

Child KSI Casualties	1994-1998 Average	1999	2000	2001	2002	2003	2004	2005	2006	% Change*
Pedestrian	26.8	17	13	13	13	9	16	14	13	-51%
Pedal Cycle	2.8	2	1	3	4	0	2	2	1	-64%
Motorcycle	0.0	0	0	0	0	1	0	0	1	∞
Car/Taxi	3.6	2	1	3	1	1	0	0	0	-100%
Bus/Goods/Other	0.4	0	0	0	1	0	0	0	0	-100%
All	33.6	21	15	19	19	11	18	16	15	-55%

* Comparison between 1994-1998 average and 2006 data.

Graph 2. Dundee City - Local Road Network, Child killed and seriously injured (KSI) casualties, 5-year moving average and yearly total

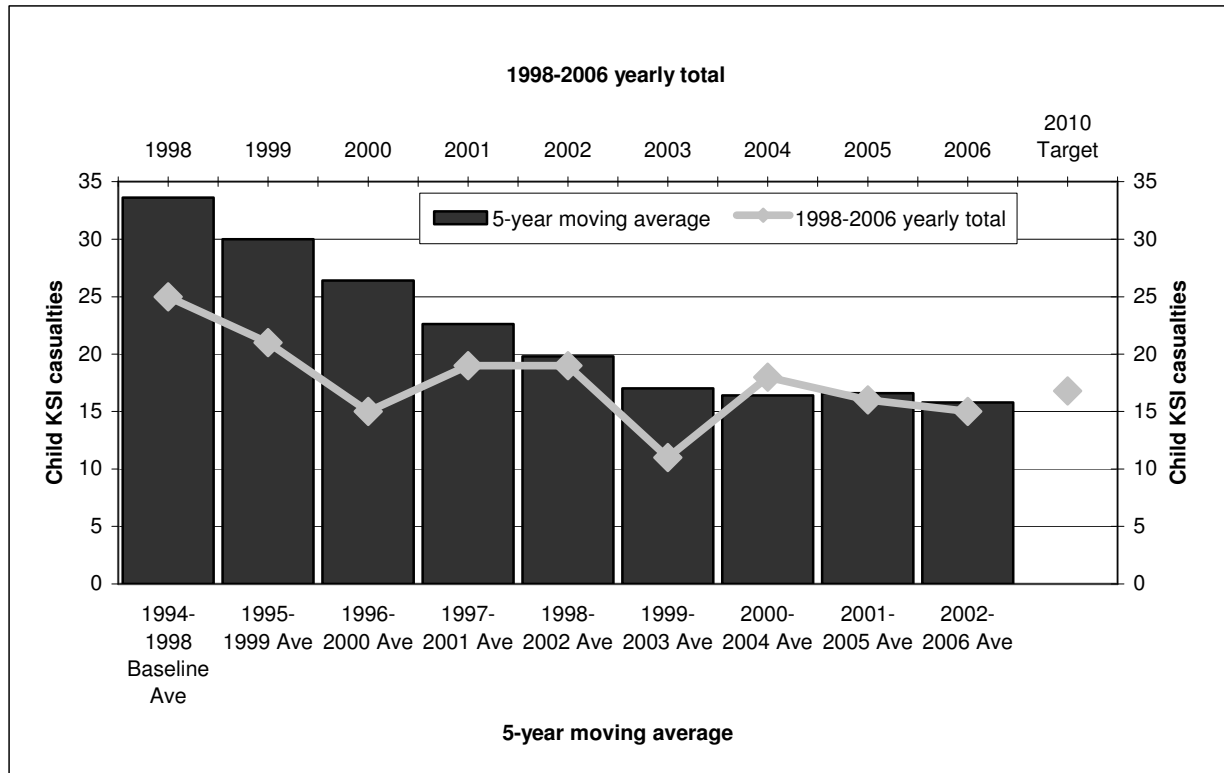


Table 3. Dundee City Local Road Network, Slight casualty rate (per 100m veh-km), 1994-1998 average to 2006

Slight Casualty Rate (per 100m veh-km)	1994-1998 Average	1999	2000	2001	2002	2003	2004	2005	2006	% Change*
All	55.0	54.7	52.4	51.9	52.0	50.6	48.6	44.6	42.0	-29%

Graph 3. Dundee City Local Road Network, Slight casualty rate (per 100m veh-km), 5-year moving average and yearly total

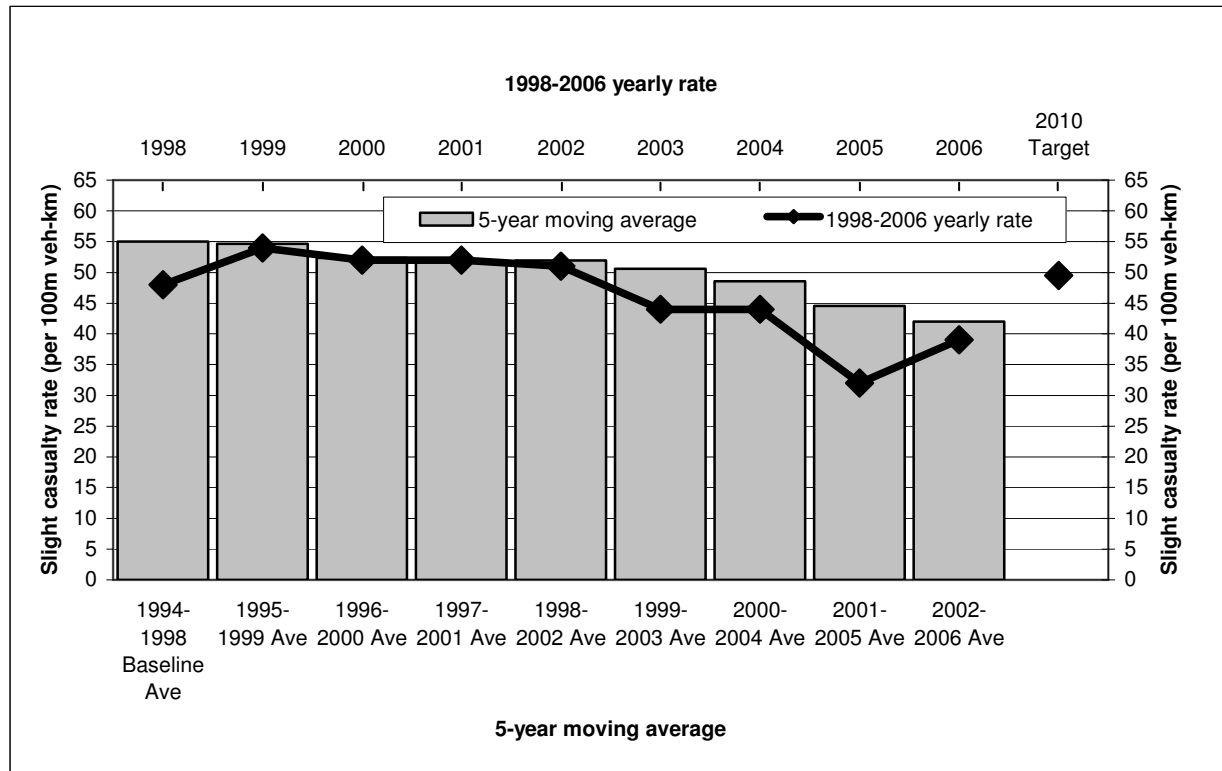


Table 4. Dundee City Local Road Network, Slightly injured casualties, 1994-1998 average to 2006

All Slight Casualties	1994-1998 Average	1999	2000	2001	2002	2003	2004	2005	2006	% Change*
Pedestrian	99.8	94	87	91	82	69	91	61	70	-30%
Pedal Cycle	25.6	20	19	16	19	21	15	13	24	-6%
Motorcycle	9.8	11	11	19	11	12	10	11	11	12%
Car/Taxi	188.8	202	206	180	178	181	157	127	149	-21%
Bus/Goods/Other	20.0	26	18	29	55	14	25	7	15	-25%
All	344.0	353	341	335	345	297	298	219	269	-22%

Graph 4. Dundee City Local Road Network, Slightly injured casualties, 5-year moving average and yearly total

