

**REPORT TO: PLANNING AND TRANSPORTATION COMMITTEE  
24 JUNE 2002**

**REPORT ON: WAITING RESTRICTION REVIEW – LOGIE STREET AT LOONS  
ROAD**

**REPORT BY: DIRECTOR OF PLANNING AND TRANSPORTATION**

**REPORT NO: 476-2002**

## **1 PURPOSE OF REPORT**

- 1.1 To propose the reorganisation of on-street parking on the east side of Logie Street at the retail frontage immediately south of Loons Road.

## **2 RECOMMENDATIONS**

- 2.1 The Committee is asked to approve the preparation of a Traffic Regulation Order to relocate the on-street parking from the shop frontages to the lay-by's provided within the revised junction layout.

## **3 FINANCIAL IMPLICATIONS**

- 3.1 The total cost of the works is estimated at £2,000 which will be met from the Public Transport Fund budget of £637,000 in 2002/03 for the North West Arterial Corridor.

## **4 LOCAL AGENDA 21 IMPLICATIONS**

- 4.1 The variations in waiting restrictions are in response to the changing context within which the City transportation network must operate. Waiting restrictions are a key tool in regulating the negative impacts of the motor vehicle whether this be for traffic management, environmental or road safety considerations.

## **5 EQUAL OPPORTUNITIES IMPLICATIONS**

- 5.1 Waiting restrictions have no direct equal opportunities. In certain locations, however, they can have positive effects for pedestrian traffic at the expense of car owner's convenience.

## **6 BACKGROUND**

- 6.1 Significant improvement to the Logie Street/Loons Road junction is currently under construction to enable buses to turn in all directions on this cross town route.
- 6.2 Limited waiting on the east side of Logie Street south of Loons Road and loading activity on this retail frontage frequently results in congestion problems at this major pinch point on the north west corridor.
- 6.3 On-street parking adjacent to the shops is to be provided on Loons Road and Logie Street which will increase the parking spaces from four to seven.

- 6.4 The limited period of waiting is to be introduced at both these locations to ensure a turnover to best serve the shops.
- 6.5 In addition the peak hour loading ban which exists in conjunction with the double yellow lines will be retained and extended to prohibit loading between 0800-093-, 1200-1400, 1630-1800.
- 6.6 Loading would be permitted outwith these times and a length of single yellow would be retained to permit parking at the shops during the evening and overnight.
- 6.7 The proposals are detailed on the attached plan.

## **7 CONSULTATIONS**

- 7.1 The Chief Executive, Director of Finance, Director of Support Services, Director of Corporate Planning and the Chief Constable, have been consulted and are in agreement with the contents of this report.

## **8 BACKGROUND PAPERS**

- 8.1

---

Mike Galloway  
Director of Planning and Transportation

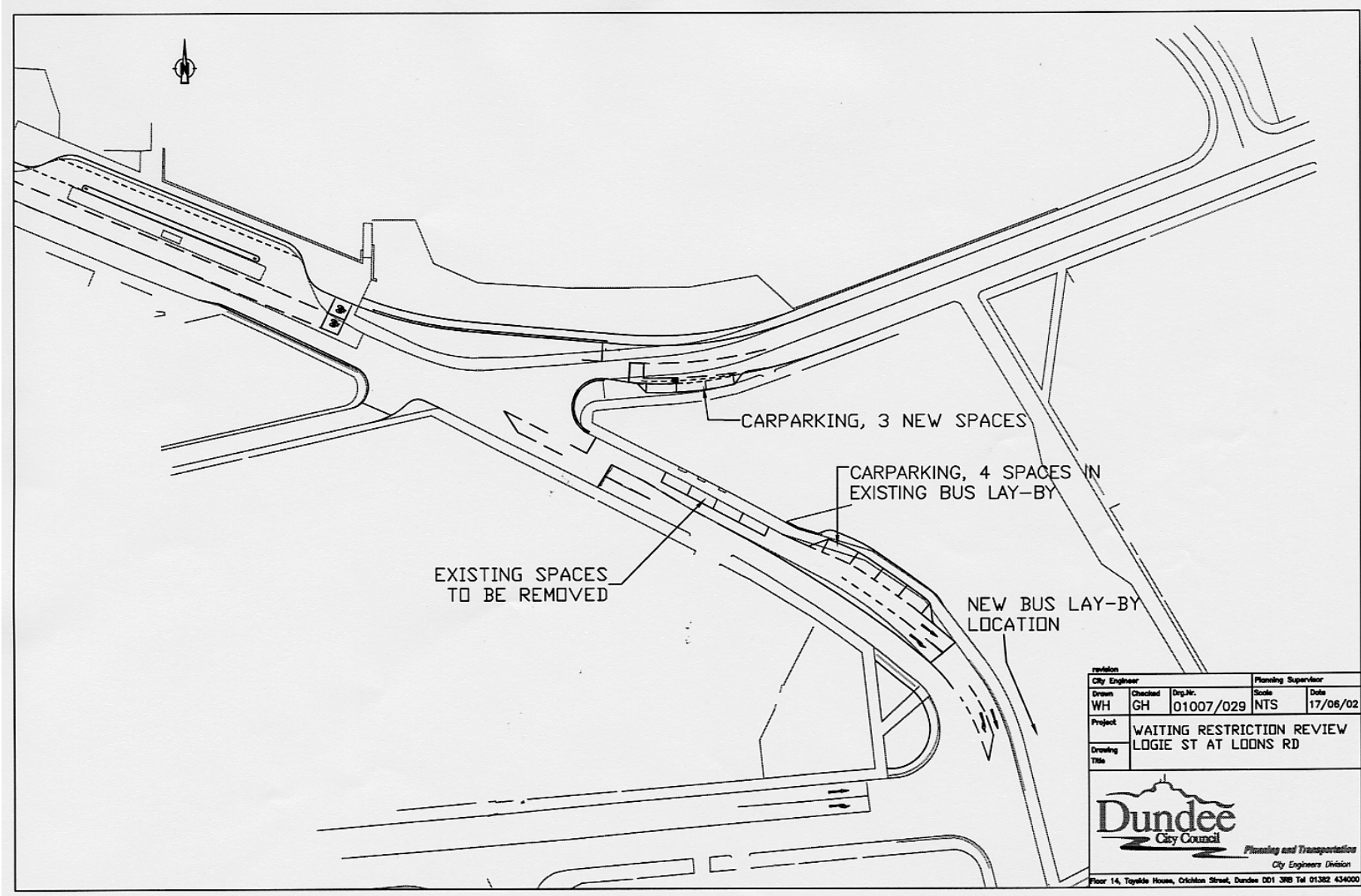
---


Iain Sherriff  
Roads and Transportation Manager

31 May 2002

IFS/SA/EES

Dundee City Council  
Tayside House  
Dundee



revision		City Engineer		Planning Supervisor	
Drawn	Checked	Dwg. No.	Scale	Date	
WH	GH	01007/029	NTS	17/06/02	
Project		WAITING RESTRICTION REVIEW			
Drawing Title		LOGIE ST AT LOONS RD			
 <b>Dundee</b> City Council Planning and Transportation City Engineers Division					
Floor 14, Toyahs House, Orlin Street, Dundee DD1 3PB Tel 01382 434000					