

REPORT TO: COMMUNITIES COMMITTEE –9 FEBRUARY 2004

**REPORT ON: SOCIAL INCLUSION PARTNERSHIP ALLOCATION OF RESOURCES 2004/2005
PROVISIONAL ALLOCATIONS 2005/06**

REPORT BY: HEAD OF COMMUNITIES

REPORT NO: 127-2004

1.0 PURPOSE OF REPORT

- 1.1 This report notes the allocation of funding for SIP 1 and SIP from Communities Scotland.
- 1.2 This report makes recommendations for the allocation of SIP 1 and SIP 2 funding for the financial years 2004/2005 and 2005/2006.
- 1.3 Notes the transfer of £25,000 from SIP 2 Core budget to SIP 2 small grants fund.

2.0 RECOMMENDATIONS

It is recommended that the Committee:

- 2.1 notes the outcome of the SIP decision-making process and agrees the proposals contained in Section 9 of this report;
- 2.2 instructs officers to proceed with implementation of these proposals, and conditions contained in Appendices A(1) to A(15); relating to SIP 1 and SIP 2 funding.
- 2.3 approves the expenditure from SIP 1 Drugs Misuse Fund outlined in Appendix C
- 2.4 approves the expenditure from SIP 2 Drugs Misuse Fund outlined in Appendix D
- 2.5 notes the expenditure from SIP 2 Empowering Communities allocation outlined in Appendix E.

3.0 FINANCIAL IMPLICATIONS

- 3.1 SIP 1 and SIP 2 Allocations 2004/05.

| SIP Core Grants | Budget | Previously Committed Expenditure | Proposals contained in this Report | Balance Remaining |
|--------------------------------|-------------------|---|---|--------------------------|
| Social Inclusion Partnership 1 | £2,347,621 | £1,455,279 | £426,093 | £ 466,249 |
| Social Inclusion Partnership 2 | £ 209,000 | £ 5,225 | £ 184,472 | £ 19,303 |
| Total | £2,556,621 | £1,460,504 | £ 610,565 | £ 485,552 |

- 3.2 SIP 1 and SIP 2 Small Grants Expenditure 2004/05. The Small Grants budgets have been allocated from the Core Grants and are accounted for within the proposals contained in this report figure of the Core Grants table above.

| SIP Small Grants | Budget | Previously Committed Expenditure | Proposals contained in this Report | Balance Remaining |
|--------------------------------|----------------|---|---|--------------------------|
| Social Inclusion Partnership 1 | £0 | £0 | £0 | £0 |
| Social Inclusion Partnership 2 | £25,000 | £0 | £0 | £25,000 |
| Total | £25,000 | £0 | £0 | £25,000 |

3.3 SIP 1 and SIP 2 Drugs Misuse Fund 2004/05. (SIP 1 proposal – Appendix C, SIP 2 proposal – Appendix D)

| Drugs Misuse | Budget | Previously Committed Expenditure | Proposals contained in this Report | Balance Remaining |
|--------------------------------|-----------------|---|---|--------------------------|
| Social Inclusion Partnership 1 | £74,972 | £0 | £10,000 | £64,972 |
| Social Inclusion Partnership 2 | £81,151 | £0 | £10,000 | £71,151 |
| Total | £156,123 | £0 | £20,000 | £136,123 |

3.4 The Empowering Communities Fund is controlled by community representatives on the SIP Board and is noted for information only. (SIP 2 Empowering Communities proposals – Appendix E)

| Empowering Communities | Budget | Previously Committed Expenditure | Proposals contained in this Report | Balance Remaining |
|--------------------------------|-----------------|---|---|--------------------------|
| Social Inclusion Partnership 1 | £60,000 | £0 | £0 | £60,000 |
| Social Inclusion Partnership 2 | £60,000 | £0 | £60,000 | £0 |
| Total | £120,000 | £0 | £60,000 | £60,000 |

3.5 Provision has been made in the Social Inclusion Partnership fund section of the Communities Department Revenue Budget 2004/2005, these are based on indicative allocations from Communities Scotland.

3.6 Allocations for 2005/06 and beyond have yet to be confirmed and recommendations contained in this report are conditional on Scottish Executive funding and Community Planning Partnership agreement.

4.0 LOCAL AGENDA 21 IMPLICATIONS

4.1 There is a close relationship between Local Agenda 21 targets and the focus of the Social Inclusion Partnership programme. The revenue expenditure proposals contained within this report are intended to meet local needs. The proposals also seek to assist with implementation of the Dundee Partnership's Community Regeneration Strategy. As such, the measures contained in this report will impact on numerous Agenda 21 targets.

5.0 EQUAL OPPORTUNITIES IMPLICATIONS

5.1 The resources made available through the Social Inclusion Partnership fund for geographic neighbourhoods are targeted on those areas which fall within the most disadvantaged 10% of enumeration districts at the time of the 1991 Census. The funding made available is intended to have the effect of equalling opportunities.

6.0 BACKGROUND

6.1 Dundee City Council now supports two separate geographic Social Inclusion Partnership programmes. The first of these programmes:

6.2 Social Inclusion Partnership 1 – covers Ardler, Kirkton, Mid Craigie /Linlathen and the Hilltown. The programme was approved in November 1996 and has the potential to run up to 31 March 2007.

6.3 The funding has been provided to assist the Dundee Partnership deliver the Community Regeneration Strategy approved by Communities Scotland. This strategy is based on four themes:

- Empowerment
- Prosperity
- Stability
- Sustainability

7.0 THE DECISION MAKING PROCESS

7.1 The criteria set out by Communities Scotland for the operation of Social Inclusion Partnerships requires the active involvement of a range of stakeholders, including representatives from the community and voluntary sectors.

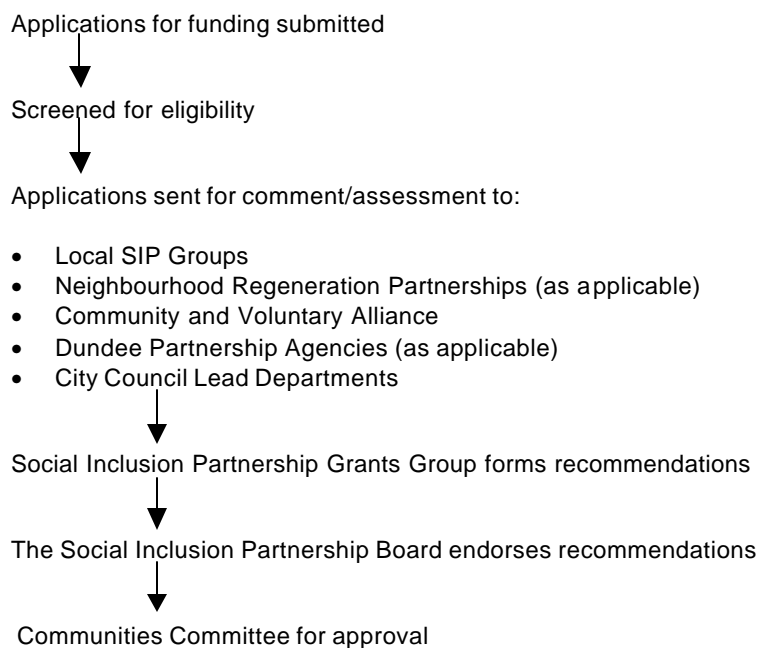
7.2 The statutory partners are expected to contribute to the achievement of the strategies through their own resources.

7.3 The City Council is the grant recipient, and is accountable for the stewardship of these funds. It does so, however, under the auspices of the Social Inclusion Partnership Board.

7.4 During the assessment and decision-making process, there has been considerable involvement by local people through their participation in the structures of the Social Inclusion Partnership. All applications have been considered by the local SIP groups in each of the SIP 1 areas. The applications have also been considered by the SIP Grants Group and endorsed by the SIP Board.

7.5 The contribution made by local people in this process has been considerable, and their contribution is an integral part of the assessment and decision-making process.

7.6 The decision-making process in relation to SIP funding applications is as follows:



7.7 Each funding application has also been assessed against a range of specific criteria under the following headings:

- Quality of project proposal
- Strategic relevance
- Resourcing factors
- Project Management

8.0 KEY ISSUES

8.1 In its approach to the allocation of Social Inclusion Partnership funding, the Social Inclusion Partnership Board must take account of a variety of factors. These include the Scottish Executive Guidance and Conditions of Grant, the specific themes and measures of the Social Inclusion Partnership Strategy, the priorities and needs identified by local people and the local Action Plans which have been developed for each of the Social Inclusion Partnership 1 communities.

8.2 All major projects which applied for extension funding were subject to an evaluation carried out either by an officer of the relevant lead department or an external evaluator. These evaluations were submitted and were considered as part of the assessment and decision-making process. Where relevant, the recommendations by evaluators will be taken into account by projects during any extension funding period, as a condition of grant. Where a full evaluation was not carried out, action was taken to ensure that those assessing the funding applications were fully aware of the activities of the project.

9.0 PROPOSALS

9.1 The following proposals are recommended for funding from the SIP 1 and SIP 2 Core Grant:

SIP applications totalling £426,093 - SIP 1 and £184,472 - SIP 2

| | | |
|--|------------------|------------------|
| • Kirkton – Strengthening Central Core | £100,000 – SIP 1 | £ 00,000 – SIP 2 |
| • Dundee Energy Efficiency Advice Project | £ 40,000 – SIP 1 | £ 00,000 – SIP 2 |
| • Kiddie Kare– Home Safety Scheme | £ 17,972 – SIP 1 | £ 12,972 – SIP 2 |
| • Enterprise Advice Team (Additional Enterprise) | £ 10,980 – SIP 1 | £ 00,000 – SIP 2 |
| • Dundee North Law Centre | £ 46,000 – SIP 1 | £ 16,000 – SIP 2 |
| • Learning Around | £104,906 – SIP 1 | £ 00,000 – SIP 2 |
| • Stobswell Youth Strategy | £ 00,000 – SIP 1 | £ 13,000 – SIP 2 |
| • Fintry North Youth Project | £ 00,000 – SIP 1 | £ 16,000 – SIP 2 |
| • Whitfield Inclusion Network Group | £ 00,000 – SIP 1 | £ 25,000 – SIP 2 |
| • International Women’s Centre | £ 4,399 – SIP 1 | £ 17,000 – SIP 2 |
| • Stobswell Façade Entertainment | £ 00,000 – SIP 1 | £ 18,000 – SIP 2 |
| • Women’s Rape and Sexual Abuse Centre | £ 00,000 – SIP 1 | £ 17,000 – SIP 2 |
| • Peer Education Project | £ 27,280 – SIP 1 | £ 20,000 – SIP 2 |
| • Off Road Motor Bike Project | £ 42,056 – SIP 1 | £ 00,000 – SIP 2 |
| • Community Language Classes | £ 32,500 – SIP 1 | £ 4,500 – SIP 2 |
| • SIP 2 Small Grants | £ 00,000 – SIP 1 | £ 25,000 – SIP 2 |

Appendices A(1) to A(15) provide further details for the projects listed above.

9.2

The following proposal is additionally recommended for funding from SIP 1 and SIP 2 Drugs Misuse money.

9.3 ▪ Peer Education Project – Appendices A(13), C and D, - £10,000 SIP 1 £10,000 SIP 2

The following proposal was not recommended for funding from the SIP 1 Core Grant outlined in appendices A (16) and B.

- Attic Youth Project

10.0 CONSULTATION

10.1 Consultation has taken place with the Chief Executive, Depute Chief Executive (Finance), Depute Chief Executive (Support Services), the Directors of Planning and Transportation, Leisure and Arts and Housing.

10.2 Partnership agencies, community representatives and voluntary sector representatives have also been consulted and involved in the assessment of applications, and the formation of recommendations contained in this report.

11.0 BACKGROUND PAPERS

11.1 No background papers, as defined by Section 50D of the Local Government (Scotland) Act 1973 (other than any containing confidential or exempt information were relied on to any material extent in the preparation of this report).

Stewart Murdoch
Head of Communities

2 February 2004

SOCIAL INCLUSION PARTNERSHIP FUND 2004/2005 APPENDIX A(1)

Project Title: Kirkton Regeneration - Strengthening Central Core

Sponsoring Body: Planning and Transportation Department

Type of Application: New

Start Date: 1 April 2004

Target Area: Kirkton

1. Description of Project

The project will strengthen the central area as the focus of community activity. A "village green" approach will be taken. Provision will be made for facilities for local children and youth, with the site additionally being used for the Annual Summer Festival. This will be done through environmental improvement, lighting and the installation of play equipment.

2. Project Management

The project will be managed by the City Council's Planning and Transportation Department in conjunction with other Departments.

3. Partnership Assessment

The project is supported by a range of partnerships and enjoys the particular backing of the Kirkton SIP Group.

4. Sustainability

The City Council will undertake to support the ongoing care and maintenance of the site.

5. Recommendations and Conditions

1 April 2004 to 31 March 2005 - £100,000 – SIP 1

SOCIAL INCLUSION PARTNERSHIP FUND 2004/2005 APPENDIX A(2)

Project Title: Dundee Energy Efficiency Project
Sponsoring Body: Dundee Energy Efficiency Project
Lead Department: Housing Department
Type of Application: New
Start Date: 1 April 2004
Target Area: SIP 1

1. Description of Project

The project will provide free and impartial energy advice and information to homes throughout the SIP1 Area, reduce fuel costs and maintain income. This will complement the existing Home Energy Strategy.

2. Project Management

The project will be supported by SCARF (Save Cash Reduce Fuel). On a daily basis, it will be led by a Project Officer.

3. Partnership Assessment

The project enjoys widespread support from the partnership.

4. Sustainability

The development of the Community Plan will allow this project to be considered in relation to the action planning of the Environmental Theme Group.

5. Recommendations and Conditions

1 April 2004 to 31 March 2005 - £40,000 – SIP 1
1 April 2005 to 31 March 2006 - £40,000 – SIP 1 (subject to transition to CPP)

SOCIAL INCLUSION PARTNERSHIP FUND 2004/2005 APPENDIX A (3)

Project Title: Kiddie Kare– Home Security
Sponsoring Body: Dundee Anti – Poverty Forum
Lead Department: Environmental and Consumer Protection
Type of Application: Extension
Start Date: March 2002
Target Area: SIP 1 and SIP 2

1. Description of Project

The project provides home safety equipment to low-income families in the SIP 1 and SIP 2 areas, thereby providing a safe environment. This responds to the fact that children in poorer families are 5 times more likely to have an accident in the home than more well off families. (ROSPA 2002)

Referrals from social workers and health visitors provide a steady stream of clients for this project.

The practical aids and devices (stair gates etc.) are fitted in the client's homes. A member of staff works alongside trained volunteers.

2. Project Performance

An independent management group manages the project.

3. Partnership Assessment

The project is strongly supported by community and voluntary representatives. It also enjoys the backing of members of staff in the City Council's Social Work and Consumer Protection Departments.

4. Sustainability

The project will need to link further with the city's community planning partners and build on the positive work that has been done at this early stage.

5. Recommendations and Conditions

1 April 2004 to 31 March 2005 SIP 1- £17,972
SIP 2 - £12,972

SOCIAL INCLUSION PARTNERSHIP FUND 2004/2005 APPENDIX A (4)

Project Title: Enterprise Advice Project – Additional Enterprise
Sponsoring Body: Economic Development Department, Dundee City Council
Type of Application: Additional Funding
Start Date: 1 October 1998
Target Area: Ardler, Hilltown, Kirkton, Mid Craigie/Linlathen

1. Description of Project

The Enterprise Advice Project was established in October 1998 to increase levels of enterprise in Social Inclusion Partnership areas. The establishment of the project reflected evidence that the business birth rate amongst disadvantaged groups and young people was around 30% below the United Kingdom average and the analysis that residents from disadvantaged areas do not tend to approach mainstream business support services to seek help if they have a business idea. With a staff team of 2 project workers, the Enterprise Advice Project seeks to stimulate increased level of business activity and increase employment opportunities. This award will specifically make provisions for a grants programme aimed at new businesses.

2. Project Performance

An external consultant, I D K Consult, has recently evaluated the project. The evaluation report found that the project has achieved its stated aims during the initial funding period, and that it fills a market gap by the development of enterprise and economic and social inclusion. The evaluator found that outcomes compared reasonably against similar schemes elsewhere in the country and that the cost of a business and job figure were reasonable. Client satisfaction with the project was found to be very high.

3. Partnership Assessment

In its assessment, the Partnership has recognised the strategic national priority of increasing business start up in disadvantaged areas. The project complements the Economic Development plan and the Council's Corporate Plan for increasing business start up.

4. Sustainability

The project has successfully secured ERDF funding for the period of additional funding. In the long term the aim is to mainstream project services within the Small Business Gateway by the end of the project. This will be taken forward by the project and the Economic Development Department.

5. Recommendations and Conditions

1 April 2004 to 31 March 2005 SIP 1 - £10,980

SOCIAL INCLUSION PARTNERSHIP FUND 2004/2005 APPENDIX A (5)

Project Title: Dundee North Law Centre – Additional Funding
Sponsoring Body: Dundee North Law Centre Management Committee
Lead Department: Support Services Department
Type of Application: Additional Funding
Start Date: 1 January 1995
Target Area: SIP 1 and SIP 2

1. Description of Project

The Dundee North Law Centre provides legal advice, assistance and representation to clients in the designated Social Inclusion Partnership areas. This is done by providing weekly advice sessions in each of the eligible communities. Additionally, legal advice is given to voluntary organisations working in the designated areas as well as some provision of social education in secondary schools in the designated areas.

Until April 2001, the project was managed by the Dundee Legal Advice Association; however, in April 2001 a new Management Committee was formed which includes representation from each of 4 Social Inclusion Partnership 1 areas.

2. Project Performance

An evaluation of the project was carried out by the Legal Services Section of the Support Services Department, Dundee City Council. The evaluation found that the project has continued to work to full capacity. The project has continued to maintain its regular weekly sessions and support to local community organisations. The project has continued to market itself effectively and has a high profile within each of the Social Inclusion Partnership areas.

The project has 2 full time solicitors and 1 full time clerical assistant. With limited staff resources the project has, in the evaluator's view, been "a victim of its own success", and is therefore coping with increased demand. The evaluation conclusion is that additional resources are required in order to assist the project meet demand. The project is intending to establish systems that will allow it to engage with the legal aid scheme operated by the Scottish Legal Aid Board as many of the Law Centre's clients would qualify for assistance under this scheme.

The additional costs that the project is requesting at this time relate to:

- Specific work Hilltown/Kirkton.
- Specific work in SIP 2 areas.

3. Partnership Assessment

The Partnership assessed that the Dundee North Law Centre continues to provide high quality and essential legal advice and representation for residents in the Social Inclusion Partnership areas. The project has a high level of support from the community and from the Community and Voluntary Alliance.

With its focus on the strategic themes of Prosperity and Empowerment, the project contributes significantly to a range of Social Inclusion Partnership issues.

4. Sustainability

In the long term the project's ability to attract income from the Legal Aid scheme will help it to develop a measure of sustainability beyond the Social Inclusion Partnership funding period. The project will however require a degree of core funding to enable the continuation of services up to the end of the Social Inclusion Partnership period.

5. Recommendations and Conditions

Additional Support:

2004 – 2005 – SIP 1 £46,000 SIP 2 £16,000

2005 – 2006 – SIP 1 £46,000 (subject to transition to CPP)

SOCIAL INCLUSION PARTNERSHIP FUND 2001/2002 APPENDIX A (6)

Project Title: Learning Around
Sponsoring Body: Communities Department
Type of Application: Extension
Start Date: 1st April 1998
Target Areas: Ardler, Kirkton, Hilltown, Mid Craigie/Linlathen

1. Description of Project

Learning Around is a project that works in the eligible Social Inclusion Partnership areas to provide guidance, advice and learning support to local people. The project's primary aim is to provide information about learning and employment opportunities available. Local people are given guidance to help them take up local learning opportunities or to move into further education, training or employment. Assistance is also available to enable people to prepare for interviews.

The project works in close partnership with other agencies involved in learning. These include Dundee College, Universities and other projects.

2. Project Performance

The project was recently evaluated by Northern College. The evaluation examined the work of the project from its inception till the present date. Overall the evaluation found the project to be extremely effective and found evidence that those who had received its services had derived great benefits from these. Much of the evidence gathered through the evaluation found that the project is particularly strong in the areas of empowerment, particularly enabling growth in client confidence, participation in local events and organisations and enabling the identification of local community need.

The project evaluation has highlighted a number of areas of work, which could be pursued by the project to enable the improvement of service delivery. These should be implemented during any period of extension funding.

3. Partnership Assessment

Overall, there is community and partnership support for this project.

4. Sustainability

The question of Learning Around's long-term sustainability needs considerable discussion. It is acknowledged that the project presently generates considerable 'leverage.' It was agreed that an input should be sought from Community Planning partners in relation to the future of Learning Around.

5. Recommendations and Conditions

Award extension funding for one year from 1 April 2004 to 31 March 2005
- SIP 1 – £104,906

SOCIAL INCLUSION PARTNERSHIP FUND 2004/2005 APPENDIX A (7)

Project Title: Stobswell Youth Strategy
Sponsoring Body: Stobswell Youth Strategy Group
Lead Department: Communities Department
Type of Application: Extension
Start Date: 1 July 2002
Target Area: Stobswell

1. Description of Project

The project aims to support young people's full participation in the Stobswell community. This is done through young people feeding on to the Stobswell Strategy Group. Thus advising on effective youth work provision in the area. The project also provides for young people's issues and acts as a means to address them. Resources will be used to support participative events and training young people.

2. Project Performance

The project has brought together groups of young people to work on issues. It has used street work and other methods to reach out to young people. A meaningful dialogue is taking place between youth in the area and the Stobswell Forum.

3. Partnership Assessment

The Youth Strategy has strong support from the SIP 2 Forum and the partners on the Grants Group.

4. Sustainability

Questions remain about the long-term sustainability of the strategy. However, connections are being made to the broader regeneration of Stobswell.

5. Recommendations and Conditions

Award extension for 1 year 1 April 2004 – 31 March 2005
£13,000 – SIP 2

SOCIAL INCLUSION PARTNERSHIP FUND 2004/2005 APPENDIX A (8)

Project Title: Fintry North Youth Project
Sponsoring Body: Fintry North Residents Association/Abertay Housing Association
Lead Department: Communities Department
Type of Application: Extension
Start Date: 1 November 2001
Target Area: Fintry

1. Description of Project

The project operates a youth facility at Grampian Gardens in Fintry. It uses street work and other methods to involve young people in a variety of projects. Links are made to services in the area e.g Family Learning House, as well as agencies and organisations working across the city.

2. Project Performance

Local residents have linked with Abertay Housing Association and the Police to support the organisation. Support has also been sought from the Youth Team of the Communities Department. The result has been the positive engagement of young people and a marked reduction in vandalism and crime in the area.

3. Partnership Assessment

The project has ongoing support of the residents and agencies involved. It enjoys the support of the SIP 2 Forum and the partners that attend the Grants Group.

4. Sustainability

The connections that have been made with the Social Housing Landlord suggest a possible route for future support.

5. Recommendations and Conditions

Award extension for 1 year 1 April 2004 – 31 March 2005
£16,000 – SIP 2

SOCIAL INCLUSION PARTNERSHIP FUND 2004/2005 APPENDIX A (9)

Project Title: Whitfield Inclusion Network Group (WING)
Sponsoring Body: Whitfield Inclusion Network Group (WING)
Type of Application: Transferring from Empowering Communities
Start Date: 1 April 2003
Target Area: Whitfield

1. Description of Project

Brings together residents in the Whitfield area to debate, campaign and work on the issues facing the community. Contacts are made with a wide range of individuals and organisations. In this way the social economy infrastructure of the area is strengthened. Practically, WING supports groups applying for funding, organises community events and acts as a platform for agencies providing a service in the area.

2. Project Management

WING is managed through an independent management committee.

3. Partnership Agreement

Considerable thought was given to this application. It was felt that WING had worked well on behalf of the residents of Whitfield. The SIP Group felt that, to ensure the positive development of this work, actions would be required to ensure a close working relationship with the Communities Department and others in Whitfield.

4. Sustainability

WING has previously been supported via the SIP Empowering Communities funding (2003/2004). The agreement by SIP to fund the group during 2004/2005 should provide the opportunity for WING to apply to funding sources that allow it to develop its distinct character.

5. Recommendations and Conditions

Awarded £25,000 SIP 2 funding, 1 April 2004 – 31 March 2005. The award is conditioned on receipt of an evaluation of 2003/2004 and an agreed work plan for 2004/2005 that sets out the working relationship with the Communities Department and milestones towards achieving recognition by Dundee City Council as a Neighbourhood Representative Structure.

SOCIAL INCLUSION PARTNERSHIP FUND 2004/2005 APPENDIX A (10)

Project Title: International Women's Centre (Building the Future)
Sponsoring Body: Dundee International Women's Centre Management Group
Lead Department: Communities Department
Type of Application: Extension
Start Date: 1 July 2002
Target Area: SIP 1 and SIP 2

1. Description of Project

The International Women's Centre provides a range of activities that support the engagement of the city's minority ethnic communities. Building the Future describes the process of the Centre becoming an 'independent' organisation and finding new premises.

2. Project Management

The project has historically had strong ties to the Young Women's Christian Association (YWCA) based in Edinburgh. This has been a productive relationship but now, through mutual agreement, steps are being taken that will see Dundee International Women's Centre become a Charitable Company Limited by guarantee.

3. Partnership Assessment

The project has received strong support from a range of partners both for its ongoing programme and for the process of development that is outlined above.

4. Sustainability

In the short term action is required to be taken to ensure that the project achieves its independent status. This in turn will provide the basis for approaching a wider range of funding providers.

5. Recommendations and Conditions

Awarded £17,000 SIP 2 and £4,399 SIP 1. 1 April 2004– 31 March 2005.

SOCIAL INCLUSION PARTNERSHIP FUND 2004/2005 APPENDIX A (11)

Project Title: Stobswell Façade Entertainment
Sponsoring Body: Dundee City Council Planning and Transportation Department
Type of Application: Extension
Start Date: 1 March 2001
Target Area: Stobswell

1. Description of Project

The project works with local shopkeepers and residents to improve the environment of the local area. This is done through providing a grant to the shopkeeper that augments their expenditure and benefits the local area.

2. Project Performance

To date, the project has seen a high take-up of grants and indeed has a waiting list of applicants. Positive feedback has come from local residents organisations and others on the positive impact it's having.

3. Partnership Assessment

The project has received support from those in the SIP 2 Forum (importantly, not just from Stobswell.) Additionally, the partners involved in the Grants Group process have supported it.

4. Sustainability

The project is presently supported by the Planning and Transport Department of the City Council. However, plans are in place to establish a voluntary sector trust for the area.

5. Recommendations and Conditions

Award extension funding for 1 year. SIP 2- £18,000.

SOCIAL INCLUSION PARTNERSHIP FUND 2004/2005 APPENDIX A (12)

| | |
|-----------------------------|--|
| Project Title: | Women's Support and Training Initiative |
| Sponsoring Body: | Women's Rape and Sexual Abuse Centre |
| Lead Department: | Social Work Department |
| Type of Application: | Extension |
| Start Date: | 12 December 1994 |
| Target Area: | Ardler, Kirkton, Hilltown, Mid Craigie/Linlathen and all Social Inclusion Partnership 2 Areas. |

1. Description of Project

The Women's Support and Training Initiative was established in 1994 as a means of providing additional support to victims of rape and sexual abuse as well as to increase awareness about rape and sexual abuse issues. Specifically the project provides the following services in the Social Inclusion Partnership areas:

- Easy access to support and information for women who have been raped/sexually abused as well as support to family, friends and local workers who are working with survivors.
- Workshops for local women to raise awareness of the issues around child sexual abuse and rape.
- Information, advice and workshops on personal safety issues for women and their communities.
- Self defence sessions so that women can find positive ways to protect themselves and to help build self-confidence and self-esteem.
- Recruitment of local women as volunteers, with the provision of training and support.
- Help line support so that women can talk directly to a support worker by telephone.
- A programme of publicity about services and volunteering with the project.

2. Project Performance

Despite undergoing many changes during the current funding period, many of which have been made to better meet the needs of the client group, the use of the project has continued at a stable rate over the last few years with increases in some aspects. The project provides a quality service for women and it is clear that this project is the only provider of such services for women in Dundee and the Social Inclusion Partnership areas. The project does however complement the work of other providers for example, the Young Women's Project.

3. Partnership Assessments

At the strategic level the project meets the needs of women that are not addressed by other providers. The project addresses the key theme of Empowerment within the Community Regeneration Strategy by providing facilities that will enhance local training, support volunteers and build self-confidence and self-esteem. In addition, the project also promotes community safety, which is a measure within the theme of sustainability. The services of this project are linked closely to social inclusion issues for women.

The proposal for extension of funding has support from all the local Social Inclusion Partnership groups at community level and from the Community and Voluntary Alliance.

4. Sustainability

Questions remain about the appropriateness of extending the project funding from the SIP budget. However, the Scottish Executive is actively exploring a longer term strategy for funding Rape Crisis Centres across Scotland. This additional years funding will assist Dundee Rape Crisis to plan for that transition.

5. Recommendations and Conditions

Award extension funding for 1 year. SIP 2- £17,000 2004-2005.

SOCIAL INCLUSION PARTNERSHIP FUND 2004/2005 APPENDIX A (13)

Project Title: Peer Education Project
Sponsoring Body: Peer Education Steering Group
Lead Department: Communities Department
Type of Application: Extension
Start Date: 1 July 2002
Target Area: SIP 1 and SIP 2

1. Description of Project

The Peer Education Project works in partnership with young people, the parents, community groups, the police and the City Council Departments who are tackling issues of alcohol and drugs misuse. The project offers young people a proven educational programme of personal and social development.

2. Project Performance

The project has worked with (S2) school students who act as volunteers in delivering the educational programme to Primary 7 children. This deals with peer pressure, substance misuse and health related issues. Those volunteering to take part utilise the full capacity of the project.

3. Partnership Assessment

The project enjoys the support of a range of partners involved in the Social Inclusion Partnership. Additionally, it receives funding from SIP Drugs Misuse money and the Drug and Alcohol Action team. (DAAT)

4. Sustainability

Consideration needs to be given to the expansion of the project's work to all the city's schools. This will require discussion between the DAAT, Council Departments and other potential funders.

5. Recommendations and Conditions

| | |
|--------------------|--|
| Award funding | <u>2004/05</u> |
| SIP 1 | £27,280 |
| SIP 2 | £20,000 |
| SIP 1 Drugs Misuse | £10,000 |
| SIP 2 Drugs Misuse | £10,000 |
| | <u>2005/06</u> |
| SIP 1 | £27,280 (conditional on transition to CPP) |

SOCIAL INCLUSION PARTNERSHIP FUND 2004/2005 APPENDIX A (14)

Project Title: Off Road Motor Bike Project
Sponsoring Body: Dundee City Council Communities Department
Type of Application: New
Start Date: 1 April 2004
Target Area: Mid Craigie and Linlathen

1. Description of Project

The project provides a youth work initiative for young people aged between 12 and 18. The project seeks to offer alternatives to negative influences e.g drugs, crime, by providing a motorbike project.

Young people participate in a structured and supervised programme. This includes learning how to ride and maintain motorbikes safely.

2. Project Management

The project is presently supported by the Communities Department. Action will be taken to establish a local steering committee.

3. Partnership Assessment

The project enjoys partnership support. Partners did however consider the requirements for citywide provision.

4. Sustainability

The project has previously been supported in SIP Drugs Misuse funding. The establishment of the project as a core funded SIP project and the establishment of a local steering group may indicate a cause for longer-term sustainability. Consideration, in the context of Community Planning, also needs to be given citywide provision.

5. Recommendations and Conditions

Award Funding – 2004/2005 - £42,056 – SIP 1
2005/2006 - £32,056 – SIP 1 (conditional on transition to CPP)

SOCIAL INCLUSION PARTNERSHIP FUND 2004/2005 APPENDIX A (15)

Project Title: Community Language Classes
Sponsoring Body: Dundee Community Language Advisory Group
Lead Department: Communities Department
Type of Application: New
Start Date: 1 April 2004
Target Area: SIP 1 and SIP 2

1. Description of Project

The project provides classes for children, young people and adults in ethnic minority languages. These include Arabic, Bengali, Cantonese, Mandarin, Punjabi, Hindi and Urdu. These classes are open to anyone with an interest in these languages. Cultural activities and visits are used to learn from aspects of Scottish culture. Collaboration takes place with Dundee City Council Departments and voluntary organisations to promote a shared understanding of cultural events.

2. Project Management

The project is managed through an executive committee of the advisory group and on a day-to-day basis through a job shared project co-ordinator post.

3. Partnership Assessments

The application enjoyed partnership support although questions were raised about sustainability.

4. Sustainability

Discussion needs to take place about the package of funding that this project can attain. Having previously received Lottery funding thought needs to be given to what other sources can be explored. The award of SIP funding will make time for this to take place.

5. Recommendations and Conditions

Award fund for 1 year – 1 April 2004 – 31 March 2005
£32,500 – SIP 1 £4,500 – SIP 2

Monitoring of those involved from SIP 1 and SIP 2 should take place on an ongoing basis.

**COMMUNITIES COMMITTEE
9 FEBRUARY 2004
UNSUCCESSFUL APPLICANTS**

Appendix B

SIP 2004 – 2005

| Ref | Applicant | Area | Initiative | Full Amount | Amount Requested | Comments |
|---------|--|--------------------|------------------------------------|-------------|------------------|---|
| SIP1/17 | The Attic Youth and Children's Project | Hilltown SIP1/SIP2 | Provision of Youth Clubs and Trips | £50,971 | £27,411 | Duplication with existing provision. Limited links with existing regeneration strategy. |

**COMMUNITIES COMMITTEE
9 FEBRUARY 2004**

Appendix C

SIP 1 Drugs Misuse Fund 2004 – 2005

Fund Available - £74,972

| Ref | Applicant | Area | Initiative | Full Amount | Amount Requested | Amount Awarded |
|-------|-------------------------------|-------|------------------------|-------------|------------------|----------------|
| | Peer Education Steering Group | SIP 1 | Peer Education Project | £10,000 | £10,000 | £10,000 |
| TOTAL | | | | £10,000 | £10,000 | £10,000 |

Total Funds Available £74,972

Previously Allocated £00,000

Less Recommendations £10,000

Balance Remaining £64,972

**COMMUNITIES COMMITTEE
9 FEBRUARY 2004**

Appendix D

SIP 2 Drugs Misuse Fund 2004 – 2005

Fund Available - £81,151

| Ref | Applicant | Area | Initiative | Full Amount | Amount Requested | Amount Awarded |
|-------|-------------------------------|-------|------------------------|-------------|------------------|----------------|
| | Peer Education Steering Group | SIP 2 | Peer Education Project | £10,000 | £10,000 | £10,000 |
| TOTAL | | | | £10,000 | £10,000 | £10,000 |

Total Funds Available £81,151

Previously Allocated £00,000

Less Recommendations £10,000

Balance Remaining £71,151

**COMMUNITIES COMMITTEE
9 FEBRUARY 2004**

Appendix E

SIP 2 Empowering Communities 2004 - 2005

Fund Available - £60,000

| Ref | Applicant | Area | Initiative | Full Amount | Amount Requested | Amount Awarded |
|----------|------------------------|-------------------------------|--|-------------|------------------|----------------|
| SIP2/EP1 | Communities Department | Charleston/Lochee/Beechwood | Community Liaison Project | £6,666 | £6,666 | £6,666 |
| SIP2/EP2 | Communities Department | Douglas/West End | Community Support Workers (SIP2) | £13,394 | £13,394 | £13,394 |
| SIP2/EP3 | Communities Department | Whitfield/Fintry/Mill O'Mains | North East Community Capacity Project | 31,444 | 31,444 | 31,444 |
| SIP2/EP4 | SIP 2 Forum | SIP 2 | To support the ongoing work of the SIP 2 Forum | £8,8496 | £8,496 | £8,496 |
| TOTAL | | | | £60,000 | £60,000 | £60,000 |

Total Funds Available £60,000

Previously Allocated £00,000

Less Recommendations £60,000

Balance Remaining £00,000